

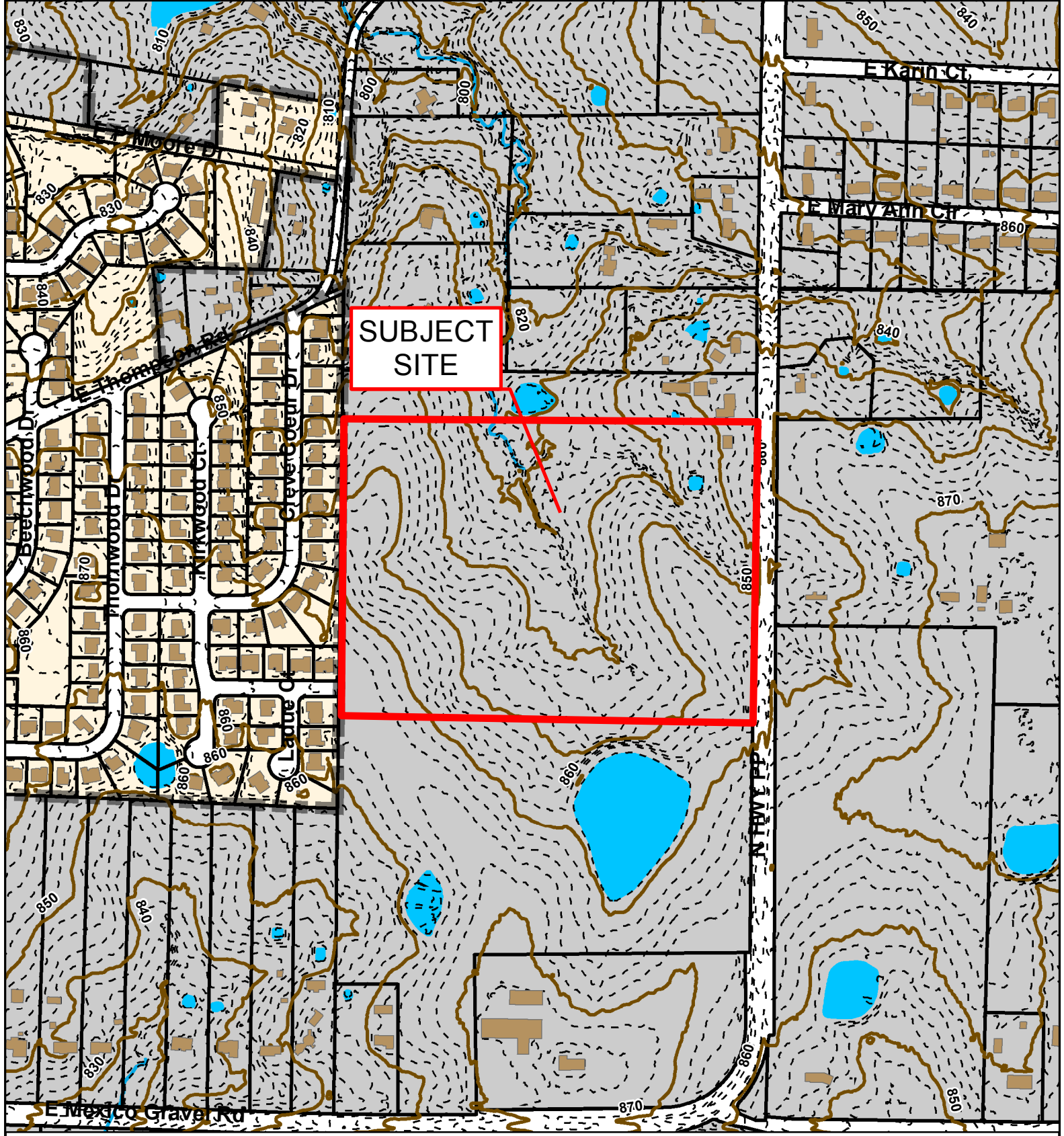
SUBJECT SITE

16-197: Fox Creek Subdivision Preliminary Plat



- City Zoning
- Parcels
- Boone County Zoning
- Columbia City Limit



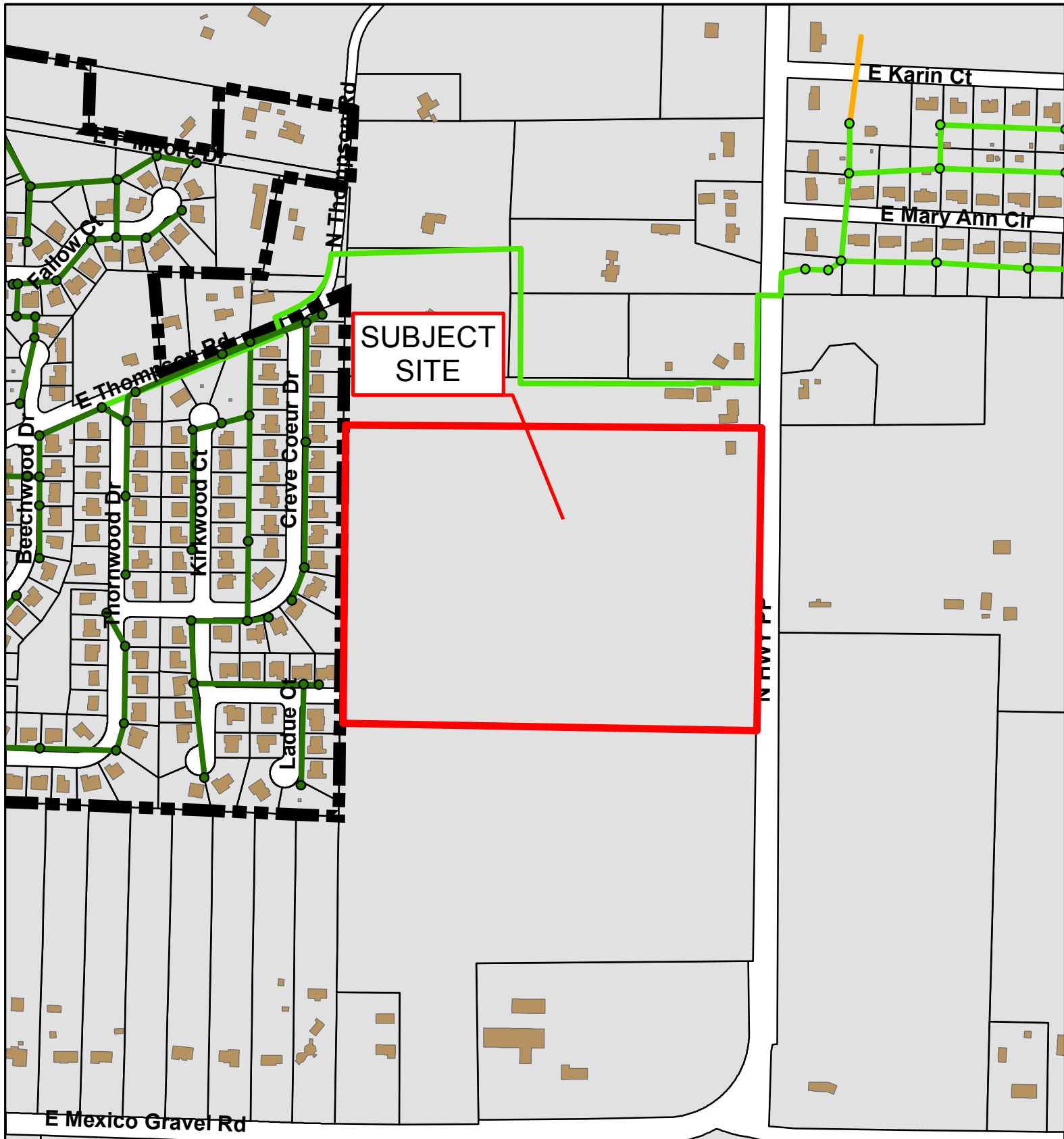


16-197: Fox Creek Subdivision Preliminary Plat



- 10 Foot Contour Lines
- 2 Foot Contour Lines
- Building Footprint
- Parcels





16-197: Fox Creek Subdivision Preliminary Plat

- BCRSD
- City Sanitary Structure

