

AMENDED PLAT OF  
J.H.GUITAR'S SUBDIVISION

PLAT BOOK 2, PAGE 39

SCALE: 1" = 30'

J.H.Guitar's amended plat of J.H.Guitar's Subdivision of lots in the City of Columbia, Missouri, being a subdivision of 127 feet, the South part of lot 2, and 39 feet, the South part of lot 5, and all of lot 3 and 4 of Guitar and Mc Baine's Subdivision of lots 3, 4, 5, 73, 74, 75 and 76, and the West part of lots 6 and 98, and Samuel and East Streets vacated in Price's Addition to the City of Columbia, Missouri:

The black lines and figures represent J.H.Guitar's Subdivision. Lots are numbered from 1 to 7, both inclusive. The dimensions of each lot are written on the plat. The 10-foot alley between lots 4 and 5, as an outlet for lot 1; in the first plat filed it was located between lots 5 and 6. The changing of the 10-foot alley from between lots 5 and 6 to between lots 4 and 5 is the only change from the original plat. Irons at all corners.

August 28, 1913. P.S.Quinn,  
Surveyor.

KNOW ALL MEN BY THESE PRESENTS:

That we, J.H.Guitar and Sallie Guitar, his wife, being the owners and proprietors of lots 2, 3, 4, 5, and 6 of J.H.Guitar's Subdivision, and Henry S. Lansing and Cora S. Lansing, his wife, being the owners of lot one (1) and of an easement over 10 feet of ground between lots 5 and 6 of J.H.Guitar's Subdivision, being desirous to amend said original plat so that said amended plat will show said alley as being between lots 4 and 5 instead of between lots 5 and 6. Said Guitar and wife and Lansing and wife, for the purpose of effecting such change of location of said 10-foot alley, hereby dedicate to the inhabitants of the City of Columbia, Missouri, the said 10-foot alley between lots 4 and 5 in lieu of the 10-foot alley between lots 5 and 6 of said Guitar's original plat of said subdivision, which latter alley they ask to be vacated by the City.

In witness whereof, we hereunto sign our names.

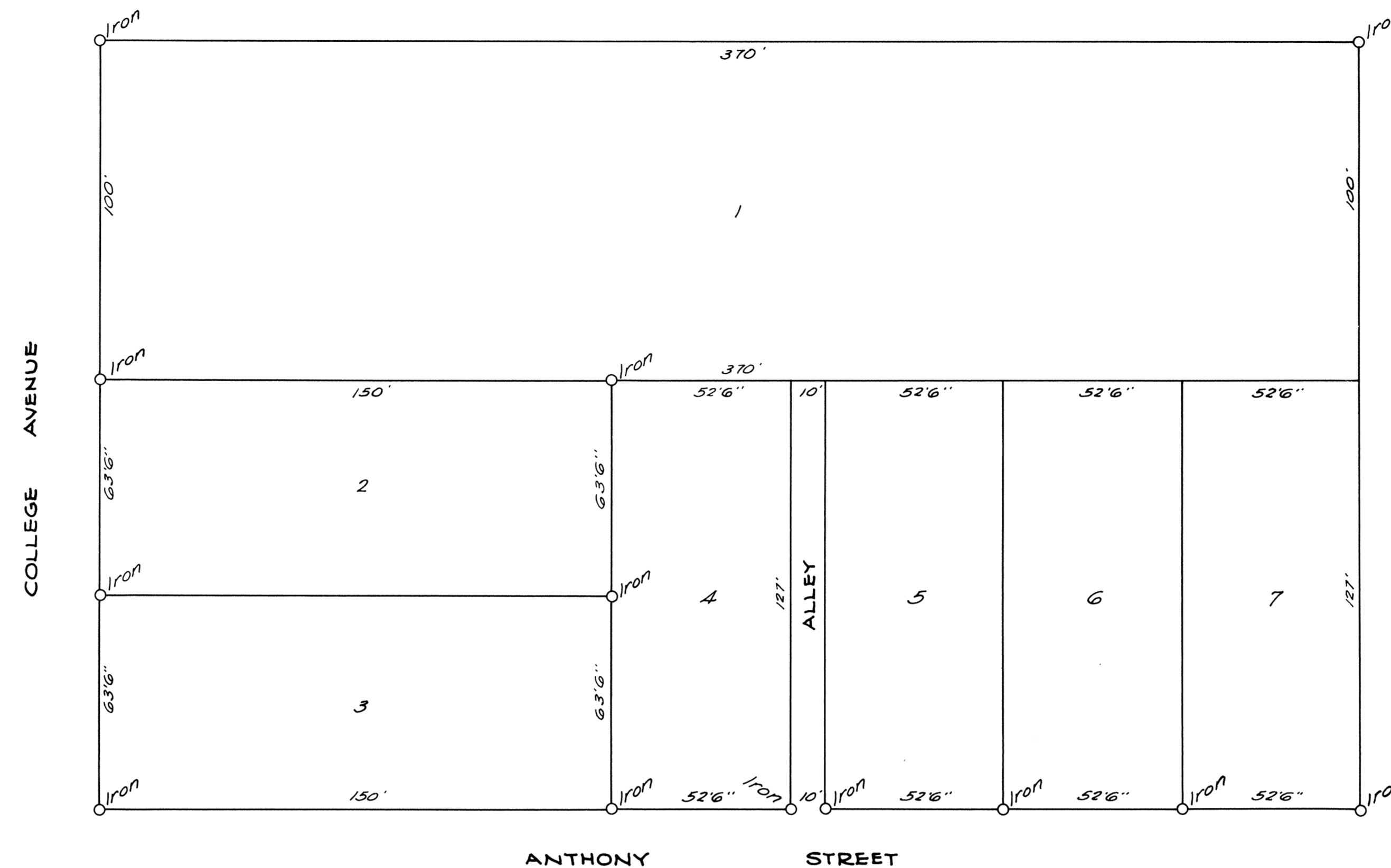
J.H.Guitar Henry S. Lansing  
Sallie Guitar Cora S. Lansing

STATE OF MISSOURI }  
COUNTY OF BOONE } ss. Before me personally appeared J.H.Guitar and Sallie Guitar, his wife, August 30, 1913, Henry S. Lansing and Cora S. Lansing, his wife, September 3, 1913, who are personally known to me, who signed and acknowledged the above and foregoing instrument of writing as their free act and deed.

My commission will expire December 12, 1915.

[SEAL] John C. Schwabe,  
Notary Public.

Approved: September 3, 1913. J. Paul Price, City Engineer.



STATE OF MISSOURI }  
COUNTY OF BOONE } ss. I, John S. Bicknell, City Clerk of the City of Columbia, Missouri, do hereby certify that this amended plat of J.H.Guitar's Subdivision to the City of Columbia, Missouri, was approved by ordinance passed by the Council and approved by the Mayor of the said City of Columbia, in Boone County, Missouri, on the 3rd day of September, A.D. 1913.

Witness my hand and the corporate seal of the City of Columbia, Missouri, this, the 4th, day of September, 1913.  
[SEAL] John S. Bicknell,  
City Clerk.

This plat is truly copied from the original plat, which was filed for record in my office on the 4th day of September, 1913, at 10:30 o'clock, A.M.

Clark Robinson,  
Recorder.

G-11

418-102