

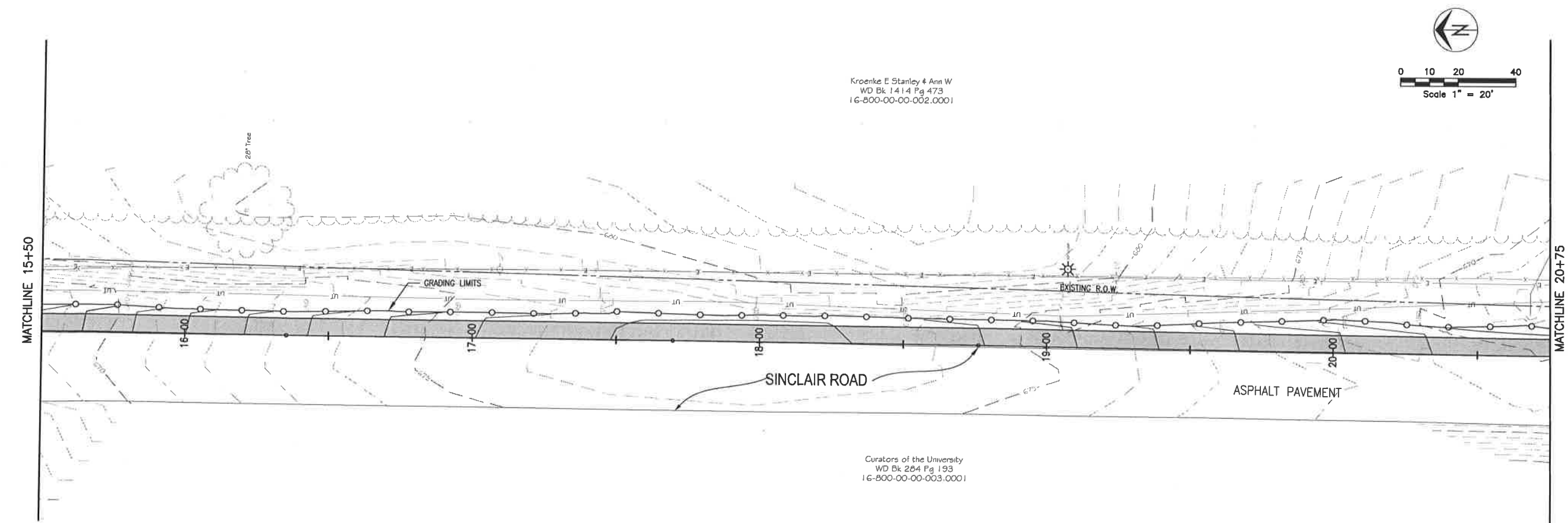
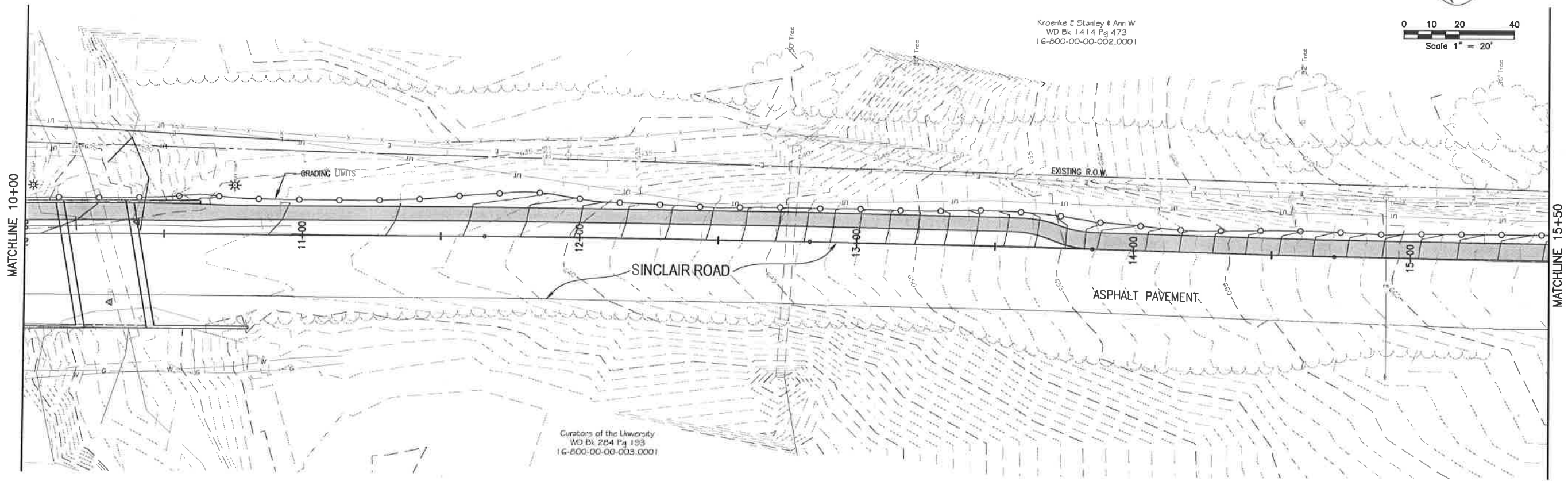
Revision	By	Date	No.

Sinclair Road Sidewalk
Plan Sheet - Sta. 00+00 to Sta. 10+00

City of Columbia, Missouri
Department of Public Works

David Allen Nichole
Registered Professional Engineer
E-24212

File No. 00709
Scale: 1" = 20'
Date: 1/2/2019
Des. A.N.H.
Dwn. T.L.W.
Chk. A.A.A.



No.	Date	By	Revision

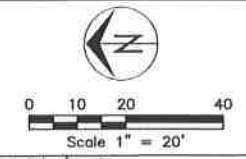
Sinclair Road Sidewalk
Plan Sheet - Sta. 10+00 to Sta. 20+75

City of Columbia, Missouri

Department of Public Works

David Allen Nichole
Registered Professional Engineer
E-24212

File No. 00709
Scale: 1" = 20'
Date: 1/2/2019
Des. A.N.H.
Dwn. T.L.W.
Chk. A.A.A.



Kroenke E Stanley & Ann W
WD Bk 1414 Pg 473
16-800-00-00-002.0001

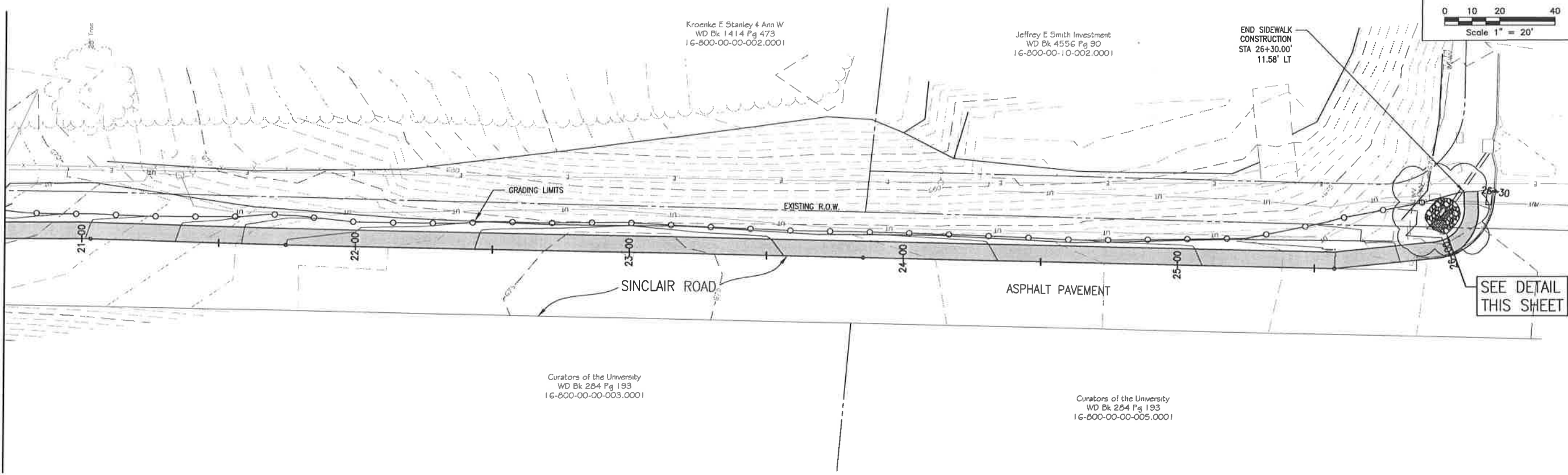
Jeffrey E Smith Investment
WD Bk 4556 Pg 90
16-800-00-10-002.0001

END SIDEWALK
CONSTRUCTION
STA 26+30.00'
11.58' LT

Curators of the University
WD Bk 284 Pg 193
16-800-00-00-003.0001

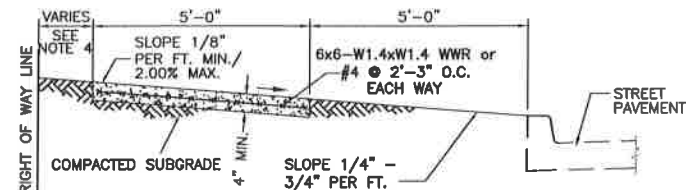
Curators of the University
WD Bk 284 Pg 193
16-800-00-00-005.0001

MATCHLINE 20+75

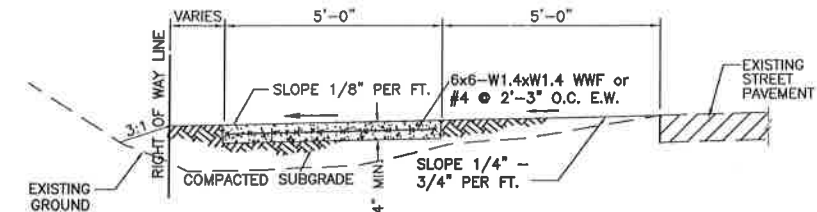


Revision	By	Date	No.

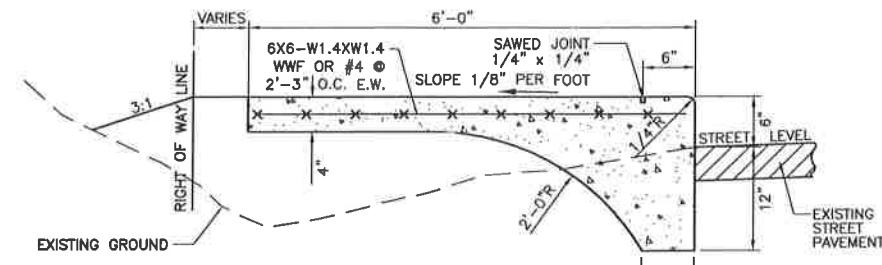
Sinclair Road Sidewalk
Plan & Profile - Sta. 20+75 to Sta. 26+30



SIDEWALK WITH GRASS PARKWAY
STA. 0+50 TO 4+30



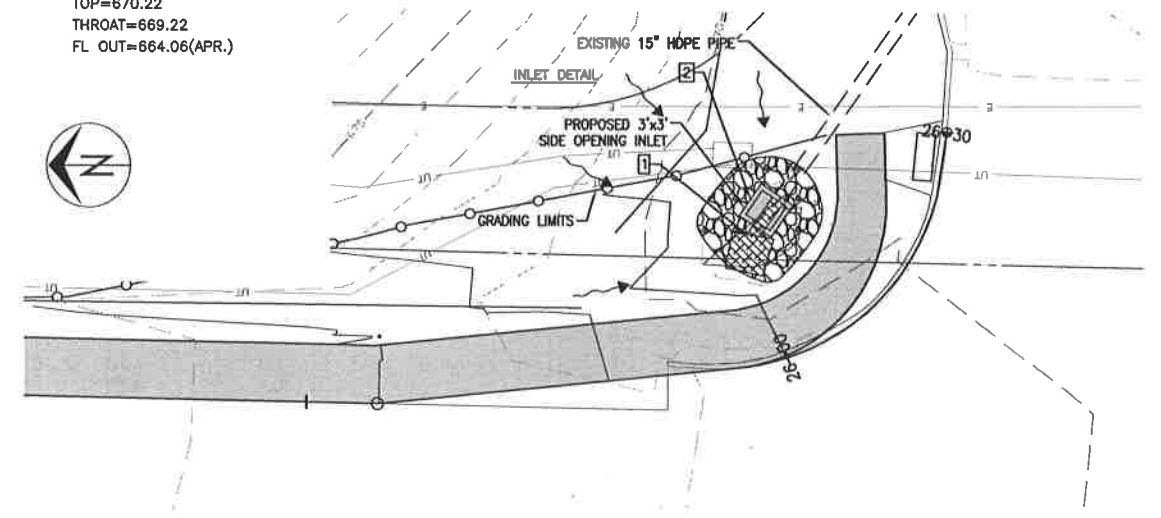
SIDEWALK WITH GRASS PARKWAY
STA. 4+30 TO 13+85.15



INTEGRAL SIDEWALK
STA. 13+85.15 TO 26+00

- NOTES:
1. REMOVE EXISTING INLET. REMOVE 4 FT OF 15" HDPE PIPE.
 2. INSTALL 3'X3' SIDE OPENING INLET. CONNECT WITH EXISTING 15" HDPE PIPE.

TOP=670.22
THROAT=669.22
FL OUT=664.06(APR.)



STORM INLET MODIFICATION

SCALE 1"=10'

City of Columbia, Missouri

Department of Public Works

David Allen Nichols
Registered Professional
Engineer
E-24212

File No. 00709
Scale: 1" = 20'
Date: 1/2/2019
Des. A.N.H.
Dwn. T.L.W.
Chk. A.A.A.