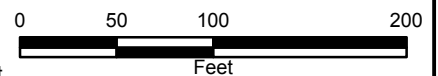
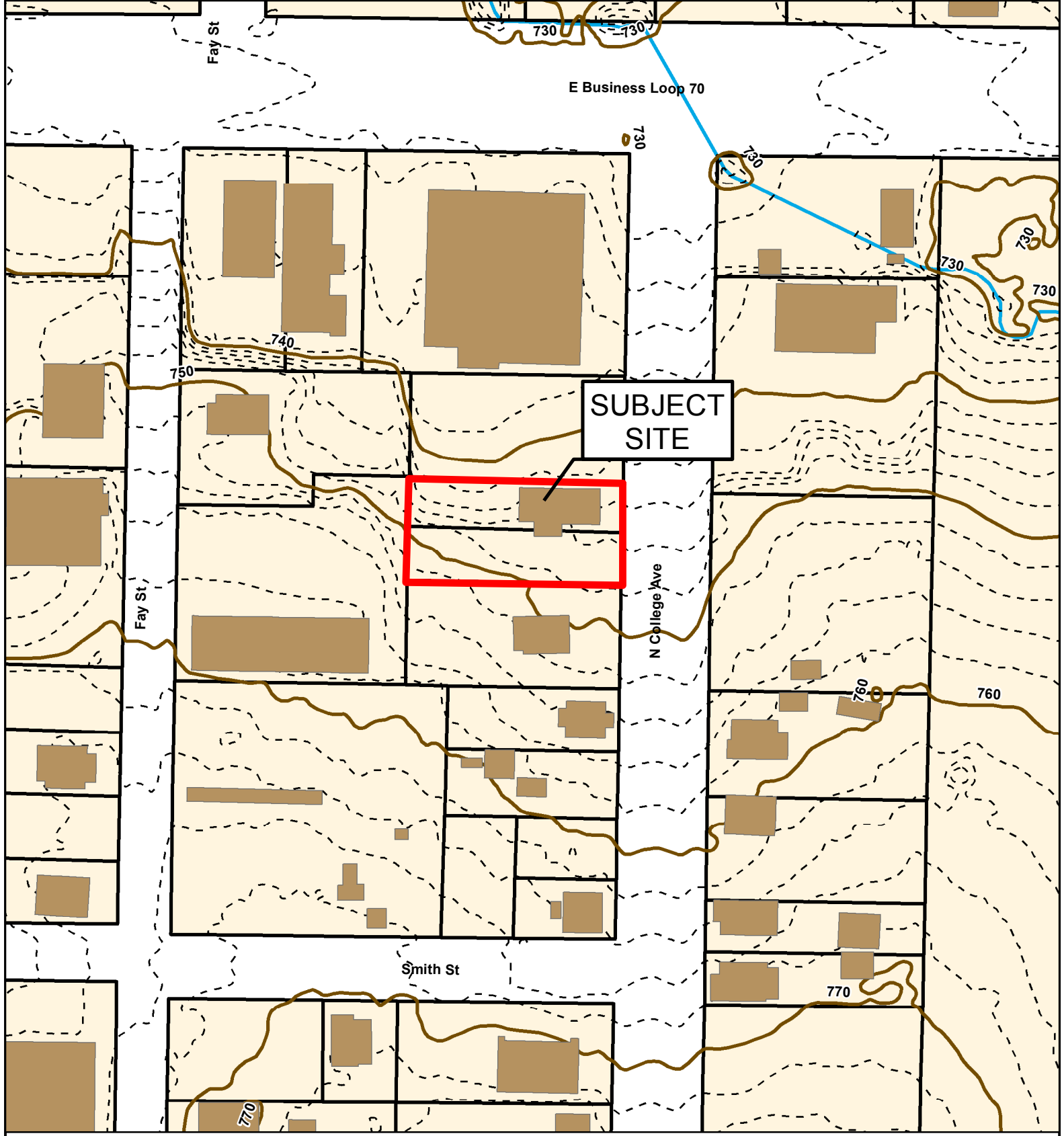


# 16-182: 1201 N College Avenue Rezoning Request



- City Zoning
- Boone County Zoning
- Parcels

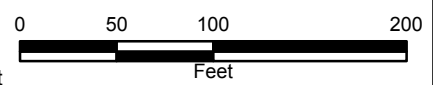


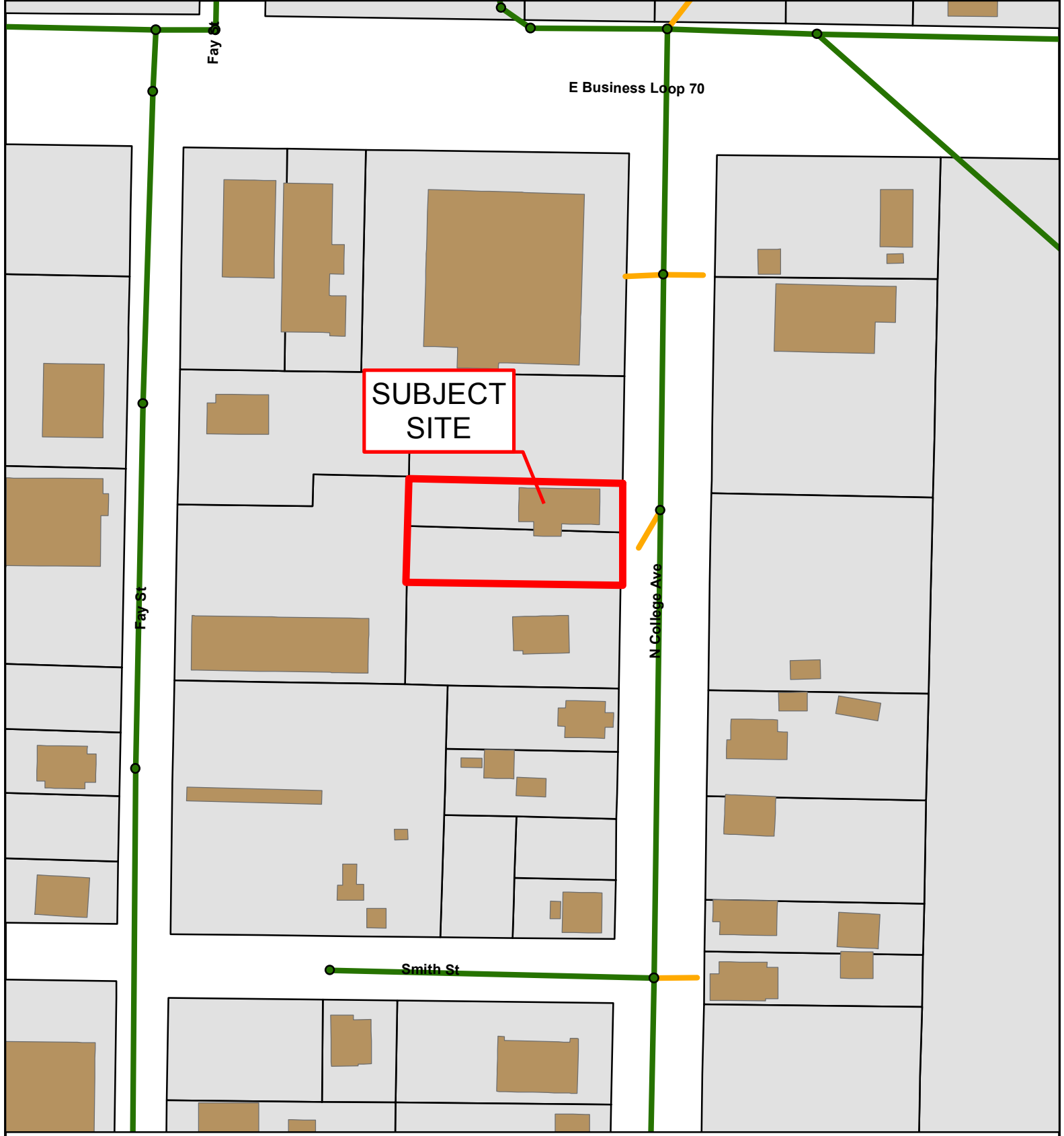


# 16-182: 1201 N College Avenue Rezoning Request



- 10 Foot Contour Lines
- 2 Foot Contour Lines
- Building Footprint
- Parcels





**SUBJECT SITE**

## 16-182: 1201 N College Avenue Rezoning Request



- City Sanitary Structure    — Private Sanitary Line    □ Parcels
- City Sanitary Line    ■ Building Footprint

