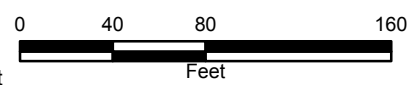


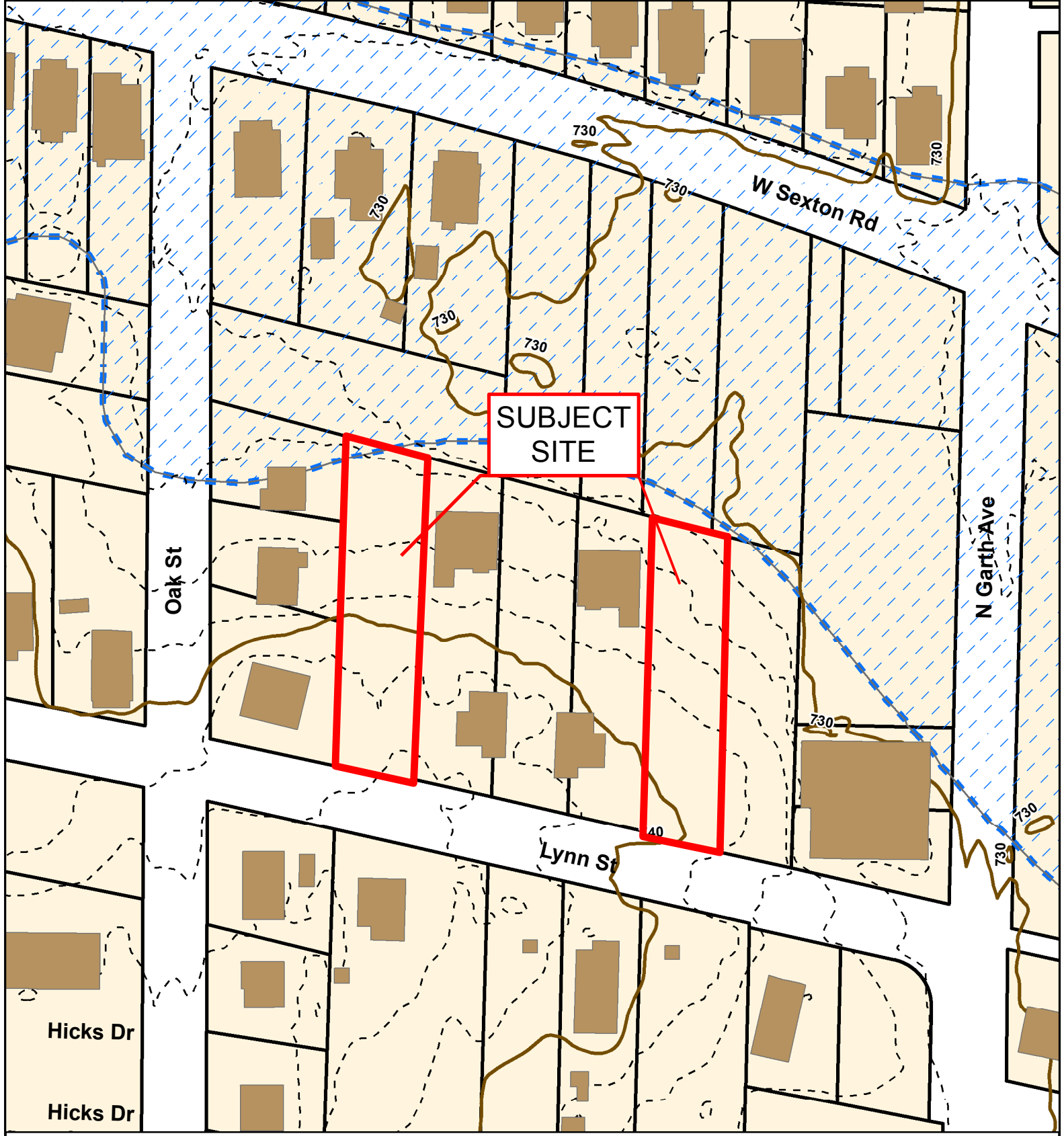
2015 Orthophoto Source: Boone County Assessor

16-184: 107 & 115 Lynn Street Rezoning



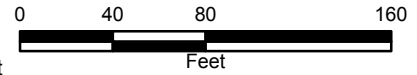
- City Zoning
- Parcels
- Boone County Zoning
- Columbia City Limit





16-184: 107 & 115 Lynn Street Rezoning

- 10 Foot Contour Lines
- Building Footprint
- 2 Foot Contour Lines
- Parcels





**SUBJECT
SITE**

16-184: 107 & 115 Lynn Street

Rezoning

- City Sanitary Structure
- City Sanitary Line
- Private Sanitary Line
- Building Footprint
- Parcels

