

AGREEMENT
For
PROFESSIONAL ENGINEERING SERVICES
Between
THE CITY OF COLUMBIA, MISSOURI
And
CROCKETT ENGINEERING CONSULTANTS, L.L.C.

THIS AGREEMENT made by and between the City of Columbia, Missouri (hereinafter called "CITY"), and **CROCKETT ENGINEERING CONSULTANTS, L.L.C.** (hereinafter called "ENGINEER"), is entered into on the date of the last signatory noted below (the "Effective Date").

WITNESSETH, that whereas CITY intends to make improvements as described below, hereinafter called the PROJECT, consisting of the following:

**Structural and Civil Engineering Services for the
Hinkson Creek Trail Extension-Walnut Street to I-70**
(Description of Project)

NOW, THEREFORE, in consideration of the mutual covenants set out herein the parties agree as follows:

ENGINEER shall serve as CITY's professional engineering contractor in those assignments to which this Agreement applies, and shall give consultation and advice to CITY during the performance of the services. All services shall be performed under the direction of a professional engineer registered in the State of Missouri and qualified in the particular field.

SECTION 1 - AUTHORIZATION OF SERVICES

1.1 ENGINEER shall not undertake to begin any of the services contemplated by this agreement until directed in writing to do so by CITY. CITY may elect to authorize the PROJECT as a whole or in parts.

1.2 Authorized work may include services described hereafter as Basic Services or as Additional Services of ENGINEER.

SECTION 2 - BASIC SERVICES OF ENGINEER

2.1 General

2.1.1 Perform professional engineering services as set forth in Attachment A - "Scope of Basic Services," dated **February 14, 2019** (hereinafter referred to as "Scope of Basic Services").

2.1.2 ENGINEER will designate the following listed individuals as its project team with responsibilities as assigned. ENGINEER shall dedicate whatever additional resources are necessary to accomplish the PROJECT within the specified time frame but will not remove these individuals from the assigned tasks for any reason within the control of ENGINEER without the written approval of CITY.

<u>Name and Title</u>	<u>Assignment</u>
Tim Crockett, PE	Principal
Nathan Eckhoff, PE	Principal
Andy Greene, EI	Project Manager
David Butcher, PLS	Survey Manager

All of the services required hereunder will be performed by ENGINEER or under its supervision and all personnel engaged in the work shall be fully qualified and authorized or permitted under state and local law to perform such services.

None of the work or services covered by this Agreement shall be subcontracted without the prior written approval of CITY and any work or services so subcontracted shall be subject to the provisions of this Agreement.

2.2 ENGINEER shall furnish such periodic reports as CITY may request pertaining to the work or services undertaken pursuant to this Agreement, the costs and obligations incurred or to be incurred, and any other matters covered by this Agreement.

2.3 ENGINEER shall maintain accounts and records, including personnel, property and financial records, adequate to identify and account for all costs pertaining to the Agreement and any other records as deemed necessary by CITY to assure proper accounting for all project funds. These records must be available to CITY or its authorized representatives, for audit purposes, and must be retained for three (3) years after expiration or completion of this Agreement.

SECTION 3 - ADDITIONAL SERVICES OF ENGINEER

3.1 General

If authorized in writing by CITY, and agreed to in writing by ENGINEER, ENGINEER shall furnish or obtain from others Additional Services of the following types which are not considered normal or customary Basic Services. The scope of Additional Services may include:

3.1.1 Financial Consultation

Consult with CITY's fiscal agents and bond attorneys and provide such engineering data as required for any bond prospectus or other financing requirements.

- 3.1.2 Property Procurement Assistance
Provide consultation and assistance on property procurement as related to professional engineering services being performed.
- 3.1.3 Obtaining Services of Others
Provide through subcontract the services or data set forth in Scope of Basic Services. ENGINEER is prohibited from holding a retainage on any payment to a subcontractor that provides any services or work on this Project.
- 3.1.4 Preliminary or final engineering design of capital facilities except as specifically identified herein.
- 3.1.5 Preparation of reports, data, application, etc., in connection with modifications to FEMA floodplain definition and/or mapping.
- 3.1.6 Extra Services
Services not specifically defined heretofore that may be authorized in writing by CITY.

SECTION 4 - RESPONSIBILITIES OF CITY

- 4.1 Provide full information as to CITY's requirements for the PROJECT.
- 4.2 Assist ENGINEER by placing at ENGINEER's disposal available information pertinent to the assignment including previous reports and other data relative thereto, including the items outlined in Scope of Basic Services.
- 4.3 Guarantee access to and make all provisions for ENGINEER to enter upon public and private property as required for ENGINEER to perform ENGINEER's services under this Agreement.
- 4.4 Examine all studies, reports, sketches, estimates, Bid Documents, Drawings, proposals and other documents presented by ENGINEER and render in writing decisions pertaining thereto.
- 4.5 Provide such professional legal, accounting, financial and insurance counseling services as may be required for the PROJECT.
- 4.6 Designate **Mike Snyder**, as CITY's representative with respect to the services to be performed under this Agreement. Such person shall have complete authority to transmit instructions, receive information, interpret and define CITY's policies and decisions with respect to materials, equipment, elements and systems to be used in the PROJECT, and other matters pertinent to the services covered by this Agreement. The CITY'S designated representative may be changed during the duration of this Agreement by written notice from the City Manager, or City Manager's designee, to ENGINEER.

4.7 Give prompt written notice to ENGINEER whenever CITY observes or otherwise becomes aware of any defect in the PROJECT.

4.8 Furnish approvals and permits from all governmental authorities having jurisdiction over the PROJECT and such approvals and consents from others as may be necessary for completion of the PROJECT.

4.9 Furnish ENGINEER data such as probings and subsurface explorations, with appropriate professional interpretations; property, boundary, easement, right-of-way, topographic and utility surveys; zoning and deed restriction; and other special data or consultations, all of which ENGINEER may rely upon in performing his services under this Agreement.

SECTION 5 - PERIOD OF SERVICE

5.1 This Agreement will become effective upon the first written notice by CITY authorizing services hereunder.

5.2 This Agreement shall be applicable to all work assignments authorized by CITY subsequent to the date of its execution and shall be effective as to all assignments authorized.

5.3 Services shall be started within 10 calendar days of Notice to Proceed and completed within **120** calendar days from the issuance of the Notice to Proceed. CITY shall have the right to establish performance times for individual phases or elements of the PROJECT by delivering a written schedule setting out the performance times to the ENGINEER.

SECTION 6 - PAYMENTS TO ENGINEER

6.1 Amount of Payment

6.1.1 For services performed, CITY agrees to pay ENGINEER the sum of **\$32,200.00 for Phases 1a, 1b, 2a, 3 and 4; OR \$31,700.00 for Phases 1a, 1b, 2b, 3 and 4 (the amount of payment will depend upon whether the CITY chooses phase 2a or 2b)**, which shall constitute complete compensation for all services and payment of expenses to be rendered under this Agreement.

6.1.2 It is expressly understood that in no event will the total amount paid to ENGINEER under the terms of this Agreement, or any amendment thereto, exceed the sum set forth in paragraph 6.1.1 unless otherwise agreed to in writing between the parties in advance of the provision of such services.

6.2 Payments

6.2.1 ENGINEER shall submit an invoice to CITY for the percentage of services rendered to date under this Agreement not more than once every month. Upon receipt of the invoice and progress report, CITY will, as soon as practical, pay ENGINEER for the services rendered, provided CITY does not contest the invoice.

SECTION 7 - GENERAL CONSIDERATIONS

7.1 Insurance

7.1.1 ENGINEER'S INSURANCE: ENGINEER agrees to maintain, on a primary basis and at its sole expense, at all times during the life of this contract the following insurance coverages, limits, including endorsements described herein. The requirements contained herein, as well as CITY's review or acceptance of insurance maintained by ENGINEER is not intended to and shall not in any manner limit or qualify the liabilities or obligations assumed by ENGINEER under this contract.

Commercial General Liability ENGINEER agrees to maintain Commercial General Liability at a limit of liability not less than **\$2,000,000** combined single limit for any one occurrence covering both bodily injury and property damage, including accidental death. Coverage shall not contain any endorsement(s) excluding nor limiting Contractual Liability or Cross Liability. If the contract involves any underground/digging operations, the general liability certificate shall include X, C and U (Explosion, Collapse and Underground) coverage.

Professional Liability ENGINEER agrees to maintain Professional (Errors & Omissions) Liability at a limit of liability not less than **\$2,000,000** per claim and **\$2,000,000** aggregate. For policies written on a "Claims-Made" basis, ENGINEER agrees to maintain a Retroactive Date prior to or equal to the Effective Date of this contract. In the event the policy is canceled, non-renewed, switched to an Occurrence Form, retroactive date advanced; or any other event triggering the right to purchase a Supplemental Extended Reporting Period (SERP) during the life of this contract, ENGINEER agrees to purchase a SERP with a minimum reporting period not less than two (2) years. The requirement to purchase a SERP shall not relieve ENGINEER of the obligation to provide replacement coverage.

Business Automobile Liability ENGINEER agrees to maintain Business Automobile Liability at a limit of liability not less than **\$2,000,000** combined single limit for any one occurrence and not less than \$150,000 per individual, covering both bodily injury, including accidental death, and property damage, to protect themselves from any and all claims arising from the use of the ENGINEER's own automobiles, and trucks; hired automobiles, and trucks; and automobiles both on and off the site of work. Coverage shall include liability for Owned, Non-Owned & Hired automobiles. In the event ENGINEER does not own automobiles, ENGINEER agrees to maintain coverage for Hired & Non-Owned Auto Liability, which may be satisfied by way of endorsement to the Commercial General Liability policy or separate Business Auto Liability policy.

Workers' Compensation Insurance & Employers' Liability ENGINEER agrees to take out and maintain during the life of this contract, Employers' Liability and Workers' Compensation Insurance for all of their employees employed at the site of the work, and in case any work is sublet, the ENGINEER shall require the subcontractor similarly to provide Workers' Compensation Insurance for all the latter's employees unless such employees are covered by the protection afforded by the ENGINEER. Workers' Compensation coverages shall meet Missouri statutory limits. Employers' Liability minimum limits shall be \$500,000 each employee, \$500,000 each accident and \$500,000 policy limit. In case any class of employees engaged in hazardous work under this contract is not protected under the Workers' Compensation Statute, the ENGINEER shall provide and shall cause each subcontractor to provide Employers' Liability Insurance for the protection of their employees not otherwise protected.

Excess/Umbrella Liability The above liability limits may be satisfied by any combination of primary and excess/umbrella liability policies.

Additional Insured ENGINEER agrees to endorse CITY as an Additional Insured with a CG 2026 Additional Insured – Designated Person or Organization endorsement, or similar endorsement, to the Commercial General Liability. The Additional Insured shall read "City of Columbia."

Waiver of Subrogation ENGINEER agrees by entering into this contract to a Waiver of Subrogation for each required policy herein except professional liability. When required by the insurer, or should a policy condition not permit ENGINEER to enter into an pre-loss agreement to waive subrogation without an endorsement, then ENGINEER agrees to notify the insurer and request the policy be endorsed with a Waiver of Transfer of Rights of Recovery Against Others, or its equivalent. This Waiver of Subrogation requirement shall not apply to any policy, which includes a condition specifically prohibiting such an endorsement, or voids coverage should ENGINEER enter into such an agreement on a pre-loss basis.

Certificate(s) of Insurance ENGINEER agrees to provide CITY with Certificate(s) of Insurance evidencing that all coverages, limits and endorsements required herein are maintained and in full force and effect. Said Certificate(s) of Insurance shall include a minimum thirty (30) day endeavor to notify due to cancellation or non-renewal of coverage. The Certificate(s) of Insurance shall name the City as additional insured in an amount as required in this contract and contain a description of the project or work to be performed.

Right to Revise or Reject CITY reserves the right, but not the obligation, to review and revise any insurance requirement, not limited to limits, coverages and endorsements based on insurance market conditions affecting the availability or affordability of coverage; or changes in the scope of work / specifications affecting the applicability of coverage. Additionally, CITY reserves the right, but not the obligation, to review and reject any insurance policies failing to meet the criteria stated herein or any insurer providing coverage due of its poor financial condition or failure to operating legally.

7.1.2 HOLD HARMLESS AGREEMENT: To the fullest extent not prohibited by law, ENGINEER shall indemnify and hold harmless the City of Columbia, its directors, officers, agents and employees from and against all claims, damages, losses and expenses (including but not limited to attorney's fees) arising by reason of any negligent act or failure to act, or willful misconduct, of ENGINEER, of any subcontractor (meaning anyone, including but not limited to consultants having a contract with ENGINEER or a subcontractor for part of the services), of anyone directly or indirectly employed by ENGINEER or by any subcontractor, or of anyone for whose acts ENGINEER or its subcontractor may be liable, in connection with providing these services except as provided in this Agreement. This provision does not, however, require ENGINEER to indemnify, hold harmless or defend the City of Columbia from its own negligence, except as set out herein.

7.2 Professional Responsibility

7.2.1 Missouri Licensure & Certificate of Authority

ENGINEER certifies that it is currently in compliance, and agrees to maintain compliance for the duration of this Agreement, with all licensure requirements of the Missouri Board for Architects, Professional Engineers, Professional Land Surveyors and Professional Landscape Architects (hereinafter "APEPLSPLA") to practice in Missouri as a professional engineer as provided under chapter 327 of the Missouri Revised Statutes. To the extent required by Section 327.401 of the Missouri Revised Statutes, ENGINEER understands and agrees that the person personally in charge and supervising the professional engineering services of ENGINEER under this Agreement shall be licensed and authorized to practice engineering in Missouri, and that ENGINEER will keep and maintain a valid certificate of authority from APEPLSPLA.

7.2.2 ENGINEER will exercise reasonable skill, care, and diligence in the performance of its services and will carry out its responsibilities in accordance with customarily accepted good professional engineering practices. If ENGINEER fails to meet the foregoing standard, ENGINEER will perform at its own cost, and without reimbursement from CITY, the professional engineering services necessary to correct errors and omissions which are caused by ENGINEER's failure to comply with above standard, and which are reported to ENGINEER within one year from the completion of ENGINEER's services for the PROJECT.

7.2.3 In addition, ENGINEER will be responsible to CITY for damages caused by its negligent conduct during its activities at the PROJECT site or in the field.

7.2.4 Professional Oversight Indemnification

ENGINEER understands and agrees that CITY has contracted with ENGINEER based upon ENGINEER's representations that ENGINEER is a skilled professional and fully able to provide the services set out in this Agreement. In addition to any other indemnification set out in this Agreement, ENGINEER agrees to defend, indemnify and hold and save harmless CITY from any and all claims, settlements and judgments whatsoever arising out of CITY's alleged negligence in hiring or failing to

properly supervise ENGINEER. ENGINEER agrees to provide CITY with Certificate(s) of Insurance evidencing that all coverages, limits and endorsements are maintained and in full force and effect.

7.3 Estimates and Projections

Estimates and projections prepared by ENGINEER relating to construction costs and schedules, operation and maintenance costs, equipment characteristics and performance, and operating results are based on ENGINEER's experience, qualifications and judgment as a design professional. Since ENGINEER has no control over weather, cost and availability of labor, material and equipment, labor productivity, construction contractor's procedures and methods, unavoidable delays, construction contractor's methods of determining prices, economic conditions, competitive bidding or market conditions and other factors affecting such estimates or projections, ENGINEER does not guarantee that actual rates, costs, performance, schedules, etc., will not vary from estimates and projections prepared by ENGINEER.

7.4 On-Site Services

PROJECT site visits by ENGINEER during construction shall not make ENGINEER responsible for construction means, methods, techniques, sequences or procedures; for construction safety precautions or programs; or for any construction contractor(s)' failure to perform its work in accordance with the plans and specifications.

7.5 Changes

CITY shall have the right to make changes within the general scope of ENGINEER's services, with an appropriate change in compensation and/or schedule, upon execution of a mutually acceptable amendment or change order signed by an authorized representative of CITY and the President or any Vice President of ENGINEER.

7.6 Suspension of Services

Should CITY fail to fulfill its responsibilities as provided under Section 4 to the extent that ENGINEER is unduly hindered in ENGINEER's services or if CITY fails to make any payment to ENGINEER on account of its services and expenses within ninety (90) days after receipt of ENGINEER's bill therefor, ENGINEER may, after giving seven (7) days' written notice to CITY, suspend services under this Agreement until CITY has satisfied his obligations under this Agreement.

7.7 Termination

Services may be terminated by the CITY at any time and for any reason, and by ENGINEER in the event of substantial failure to perform in accordance with the terms hereof by CITY through no fault of ENGINEER, by ten (10) days' notice. If so terminated, CITY shall pay ENGINEER all uncontested amounts due ENGINEER for all services properly rendered and expenses incurred to the date of receipt of notice of termination.

7.7.1 In the event of CITY's termination of this Agreement pursuant to the above section, all finished or unfinished documents, data, studies, surveys, drawings, maps, models, photographs and reports prepared under this Agreement, shall at the option of CITY become its property.

Further, ENGINEER shall not be relieved of any liability to CITY for any damages sustained by CITY by virtue of any breach of this Agreement by ENGINEER and CITY may withhold any payments due ENGINEER for the purpose of set-off until such time as the exact amount of damages to CITY, if any, is determined.

7.8 Publications

Recognizing the importance of professional development on the part of ENGINEER's employees and the importance of ENGINEER's public relations, ENGINEER may prepare publications, such as technical papers, articles for periodicals, and press releases, pertaining to ENGINEER's services for the PROJECT. Such publications will be provided to CITY in draft form for CITY's advance review. CITY will review such drafts promptly and will provide comments to ENGINEER. CITY may require deletion of proprietary data or confidential information from such publications but otherwise will not unreasonably withhold its approval. The cost of ENGINEER's activities pertaining to any such publication shall be paid entirely by ENGINEER.

7.9 Nondiscrimination

During the performance of this Agreement, ENGINEER agrees to the following:

7.9.1 ENGINEER shall not discriminate against any employee or applicant for employment because of race, color, religion, sex, age, national origin, ancestry, marital status, disability, sexual orientation, gender identity or expression, or any other protected category designated by local, state, or federal law. ENGINEER shall take affirmative action to ensure that applicants are employed and that employees are treated during employment without regard to their race, color, religion, sex, age, national origin, ancestry, marital status, disability, sexual orientation, gender identity or expression, or any other protected category designated by local, state, or federal law. Such action shall include, but not be limited to the following: employment, upgrading, demotion, or transfer; recruitment or recruitment advertising; layoff or termination; rates of pay or other forms of compensation; and selection for training including apprenticeship. ENGINEER agrees to post notices in conspicuous places, available to employees and applicants for employment.

7.9.2 ENGINEER shall, in all solicitation or advertisements for employees placed by or on behalf of ENGINEER, state that all qualified applicants will receive consideration for employment without regard to race, color, religion, sex, age, national origin, ancestry, marital status, disability, sexual orientation, gender identity or expression, or any other protected category designated by local, state, or federal law.

7.9.3 ENGINEER shall comply with all provisions of State and Federal Laws governing the regulation of Equal Employment Opportunity including Title VI of the Civil Rights Act of 1964.

7.10 Successor and Assigns

CITY and ENGINEER each binds himself and his successors, executors, administrators and assigns to the other party of this Agreement and to the successors, executors, administrators and assigns of such other party, in respect to all covenants of this Agreement; except as above, neither CITY nor ENGINEER shall assign, sublet or transfer his interest in the Agreement without the written consent of the other.

7.11 Rights and Benefits

ENGINEER's services will be performed solely for the benefit of the CITY and not for the benefit of any other persons or entities.

7.12 Compliance with Local Laws

ENGINEER shall comply with all applicable laws, ordinances and codes of the state and city.

7.13 Law; Submission to Jurisdiction Governing

This Agreement shall be governed by, interpreted and enforced in accordance with the laws of the State of Missouri and/or the laws of the United States, as applicable. The venue for all litigation arising out of, or relating to this Agreement, shall be Boone County, Missouri or the United States Western District of Missouri. The parties hereto irrevocably agree to submit to the exclusive jurisdiction of such courts in the State of Missouri and waive any defense of forum non conveniens.

7.14 Employment of Unauthorized Aliens Prohibited

7.14.1 ENGINEER agrees to comply with Missouri State Statute section 285.530 in that they shall not knowingly employ, hire for employment, or continue to employ an unauthorized alien to perform work within the state of Missouri.

7.14.2 As a condition for the award of this Agreement, ENGINEER shall, by sworn affidavit and provision of documentation, affirm its enrollment and participation in a federal work authorization program with respect to the employees working in connection with the contracted services. ENGINEER shall also sign an affidavit affirming that it does not knowingly employ any person who is an unauthorized alien in connection with the contracted services.

7.14.3 ENGINEER shall require each subcontractor to affirmatively state in its contract with ENGINEER that the subcontractor shall not knowingly employ, hire for employment or continue to employ an unauthorized alien to perform work within the state of Missouri. ENGINEER shall also require each subcontractor to provide ENGINEER with a sworn affidavit under the penalty of perjury attesting to the fact that the subcontractor's employees are lawfully present in the United States.

7.15 No Waiver of Immunities

In no event shall the language of this Agreement constitute or be construed as a waiver or limitation for either party's rights or defenses with regard to each party's applicable sovereign, governmental, or official immunities and protections as provided by federal and state constitutions or laws.

7.16 Agreement Documents

This Agreement includes the following attachment, which is incorporated herein by reference:

<u>Attachment</u>	<u>Description</u>
A	Scope of Work
B	Work Authorization Affidavit

In the event of a conflict between the terms and conditions of this Agreement and any attachment hereto, the terms contained in this Agreement shall prevail and the terms contained in any attachment shall subsequently prevail in the order attached hereto.

7.17 Entire Agreement

This Agreement represents the entire and integrated Agreement between ENGINEER and CITY relative to the Scope of Basic Services herein. All previous or contemporaneous agreements, representations, promises and conditions relating to ENGINEER's services described herein are superseded.

[SIGNATURES ON FOLLOWING PAGE]

CITY OF COLUMBIA, MISSOURI

By: _____
City Manager

Date: _____

ATTESTED BY:

Sheela Amin, City Clerk

APPROVED AS TO FORM:

Nancy Thompson, City Counselor *NT*

CERTIFICATION: I hereby certify that the above expenditure is within the purpose of the appropriation to which it is charged, Account No. **44008850-604023 00728**, and that there is an unencumbered balance to the credit of such appropriation sufficient to pay therefor.

By: _____
Director of Finance

**CROCKETT ENGINEERING CONSULTANTS,
L.L.C.**

By: _____

Date: _____

ATTEST:

By: _____

Name: _____

NOTICE TO VENDORS

Section 285.525 – 285.550 RSMo Effective January 1, 2009

Effective January 1, 2009 and pursuant to RSMo 285.530 (1), No business entity or employer shall knowingly employ, hire for employment, or continue to employ an unauthorized alien to perform work within the state of Missouri.

As a condition for the award of any contract or grant in excess of five thousand dollars by the state or by any political subdivision of the state to a business entity, or for any business entity receiving a state administered or subsidized tax credit, tax abatement, or loan from the state, the business entity shall, by sworn affidavit and provision of documentation, affirm its enrollment and participation in a federal work authorization program with respect to the employees working in connection with the contracted services. Every such business entity shall sign an affidavit affirming that it does not knowingly employ any person who is an unauthorized alien in connection with the contracted services. [RSMO 285.530 (2)]

An employer may enroll and participate in a federal work authorization program and shall verify the employment eligibility of every employee in the employer's hire whose employment commences after the employer enrolls in a federal work authorization program. The employer shall retain a copy of the dated verification report received from the federal government. Any business entity that participates in such program shall have an affirmative defense that such business entity has not violated subsection 1 of this section. [RSMO 285.530 (4)]

For vendors that are not already enrolled and participating in a federal work authorization program, E-Verify is an example of this type of program. Information regarding E-Verify is available at:

http://www.dhs.gov/xprevprot/programs/gc_1185221678150.shtm.



1000 W Nifong Blvd., Bldg. 1 • Columbia, MO 65203

January 1, 2019

FEE SCHEDULE

PERSONNEL	COST/HOUR
Professional V	\$150
Professional IV	\$130
Professional III	\$110
Professional II	\$100
Professional I	\$90
Technician III	\$100
Technician II	\$80
Technician I	\$65
Clerical	\$50
Two-Man Survey Crew	\$135
One-Man Survey Crew	\$125

Effective through December 31, 2019



February 14, 2019

Mike Snyder
Parks and Recreation
City of Columbia
PO Box 6015
Columbia, MO 65205

Re: Hinkson Creek Trail Extension – Walnut Street to I-70

Dear Mr. Snyder:

Thank you for the opportunity to present a proposal for structural and civil engineering services for the Walnut Street to I-70 trail connection of the Hinkson Creek Trail. Crockett Engineering is pleased to offer the following scope of services for the proposed project.

PROJECT DESCRIPTION

The proposed project is the extension of the Hinkson Creek Trail from Walnut Street to I-70. Said extension will utilize a section of existing pedway located along the newly constructed portion of Conley Road. It is the intent of this extension to connect Stephens Lake Park to a previously designed trail connection going under I-70. The extension going under I-70 has been previously designed by another consultant however it has not yet been constructed. This alignment for this proposal is per the exhibit provided to Crockett Engineering by the Columbia Parks and Recreation Department.

Given the nature of the work, this proposal has been broken down into several sections. It is the intent of these sections to provide a step-by-step approach rather than a full project design in the attempt to allow for specific review of certain items ahead of design. This will allow for better review of the existing conditions and allow for a scope change, if needed, to take place without having to modify or change an approved contract.

PROPOSED SERVICES

Phase 1 a- Evaluation of Existing Walnut Street Bridge

- Provide a structural non-destructive investigation of the existing bridge structure.
- Identify problematic areas that need to be addressed for pedestrian use.
- Provide a load rating based on existing conditions.

The fixed fee for this portion of the project would be \$3,000.

Phase 1b – Walnut Street Bridge Structural Renovations

- Provide specifications and structural design modifications for the rehabilitation of the existing bridge structure (including structural elements, railings, and decking).

The fixed fee for this portion of the project would be \$5,000.

Phase 2a – Trail Design from Stephen Lake Park to east end of Walnut Street (utilizing old bridge to cross Hinkson Creek).

- Complete a topographic survey of the subject site.
- Complete a right-of-way survey of the site to determine the extents and limits of the existing rights-of-way.
- Complete a Trail Plan that is in compliance with the City of Columbia regulations.
- Complete an erosion control plan.
- Complete a grading plan for trail placement.
- Provide plan and profiles for trail construction.
- Provide a storm water plan if necessary to address storm water concerns in the existing road ditches.
- Provide all construction details for trail construction.
- Assist the City with any necessary local and state permitting for land disturbance.

The fixed fee for this portion of the project would be \$7,900.

Phase 2b – Trail Design from Stephen Lake Park to east end of Walnut Street (utilizing existing vehicular bridge and placing trail on south side of Walnut Street)

- Complete a topographic survey of the subject site.
- Complete a right-of-way survey of the site to determine the extents and limits of the existing rights-of-way.
- Complete a Trail Plan that is in compliance with the City of Columbia regulations.
- Complete a shared-use bridge plan for pedestrian and vehicular users of the existing bridge.
- Complete an erosion control plan.
- Complete a grading plan for trail placement.
- Provide plan and profiles for trail construction.
- Provide a storm water plan if necessary to address storm water concerns in the existing road ditches (if needed).
- Provide all construction details for trail construction.
- Assist the City with any necessary local and state permitting for land disturbance.

The fixed fee for this portion of the project would be \$7,400.

Phase 3 – Trail Design from Walnut Street to Conley Road

- Complete a topographic survey of the subject site.
- Recover the existing property boundaries and existing easement locations along the trail corridor.
- Complete a Trail Plan that is in compliance with the City of Columbia regulations.
- Complete an erosion control plan.
- Complete a grading plan for trail placement.
- Provide plan and profiles for trail construction.
- Provide all construction details for trail construction.
- Assist the City with any necessary local and state permitting for land disturbance.

The fixed fee for this portion of the project would be \$9,500.

Phase 4 – Trail Design from Conley Road to I-70

- Complete a topographic survey of the subject site.
- Recover the existing property boundaries and existing easement locations along the trail corridor.
- Complete a Trail Plan that is in compliance with the City of Columbia regulations.
- Complete an erosion control plan.
- Complete a grading plan for trail placement.
- Provide plan and profiles for trail construction.

- Provide all construction details for trail construction.
- Utilize the existing trail design coming from under I-70 as a tie in point as much as possible.
- Assist the City with any necessary local and state permitting for land disturbance.

The fixed fee for this portion of the project would be \$6,800.

CLARIFICATIONS TO PROPOSAL

The following notes apply to this fee and proposal:

- Any fees accessed by governmental agencies for plan review or permits are not included.
- Assistance to consult in bidding and negotiations with the contractor and provide estimates of construction costs is not included unless otherwise specified.
- Additional services will be bill hourly using our current fee schedule.
- No geotechnical services are included in the above numbers other than what is listed.
- No retaining wall designs are included in the above pricing but can be provided once the civil portion is completed and the scope of retaining wall design is better known.
- No utility redesigns are included in the above numbers.
- No FEMA or Floodway analysis or permitting is included in these quotes.
- No storm water detention or water quality features are included in the above pricing.

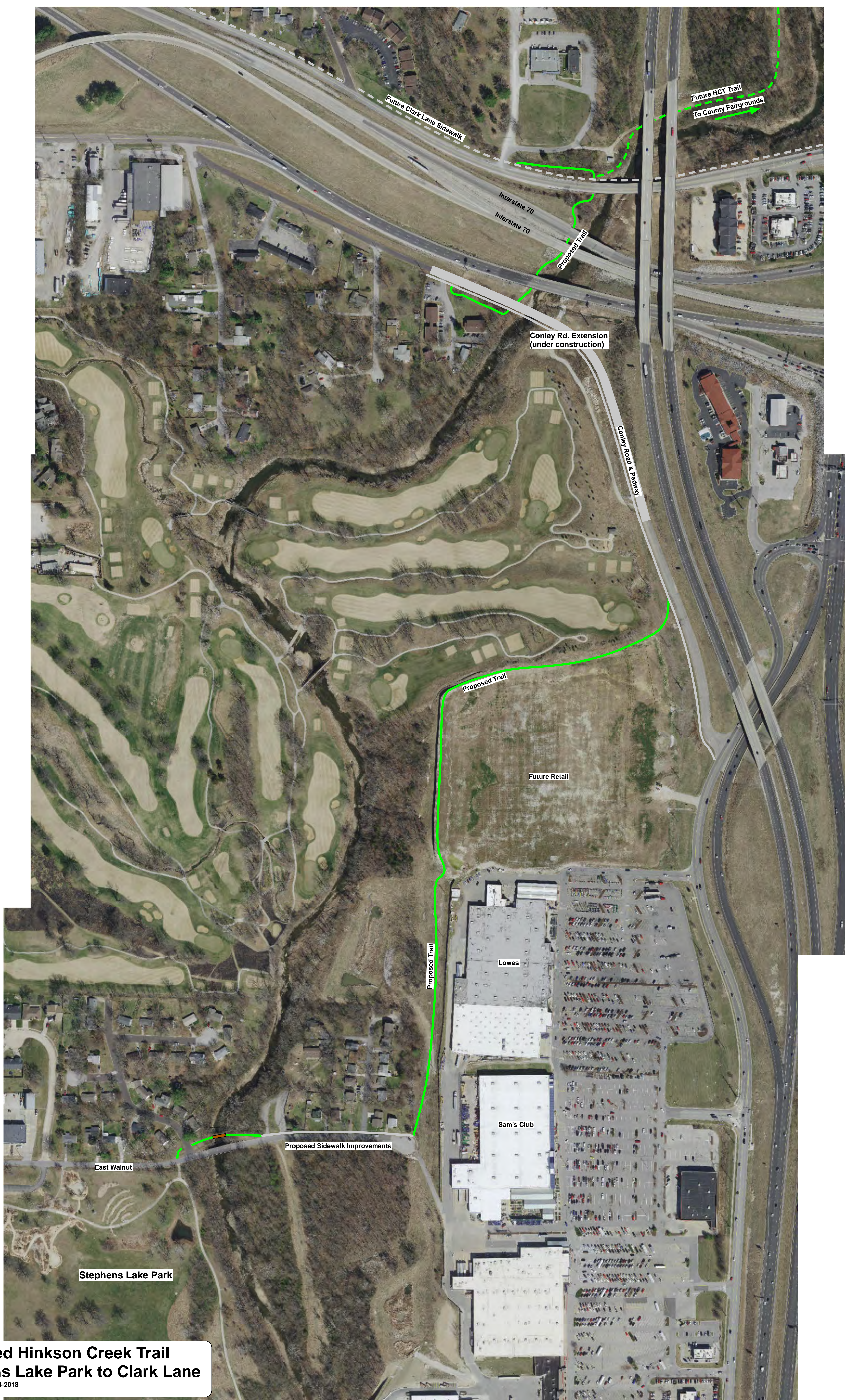
Again, thank you for the opportunity to work with you on this project. If you have any questions or comments, please do not hesitate to contact us.

Sincerely,

Crockett Engineering



Tim Crockett, PE



Future Clark Lane Sidewalk

Future HCT Trail
To County Fairgrounds

Interstate 70
Interstate 70

Proposed Trail

Conley Rd. Extension
(under construction)

Conley Road & Parkway

Proposed Trail

Future Retail

Lowes

Sam's Club

Proposed Sidewalk Improvements

East Walnut

Stephens Lake Park

Proposed Hinkson Creek Trail Stephens Lake Park to Clark Lane

Drawn by: MSS 1-24-2018

