



Parks and Recreation Commission

Nov. 15, 2018



Parks & Recreation Commission Agenda

- I. Call to Order
- II. Approval of Agenda Action
- III. Approval of Minutes Action
- IV. Approval of Monthly Report from October Action
- V. Introductions
 - A. New Park Ranger
- VI. Old Business
- VII. New Business
 - A. MPRA Conference
 - B. Rezoning – Westbury Village Action
 - C. Rezoning – MKT Trail, McBaine Action
- VIII. Reports
 - A. Council Items
 - B. Bicycle and Pedestrian Commission Report
 - C. Capital Project Report
 - D. Recreation Services Report
- IX. Staff Comments
- X. Commission Comments to Staff
- XI. Public Comments
- XII. Next Meeting Date: Jan. 17, 2019, 7 p.m.
- XIII. Adjournment

Monthly Report Highlights

Park Services Division:

Park Ranger:

- ▶ (1) Warning for removal of plants/had them put back in Twin Lakes Recreation Area
- ▶ (1) Warning for balloon wanting to depart in Gans Creek Recreation Area without a permit
- ▶ (2) Warnings for drone in Stephens Lake Park
- ▶ (2) Warnings for not wearing a helmet in Skate Park in Cosmo Park

Monthly Report Highlights

Recreation Services Division:

- ▶ YES Assistance Amount Given

Oct 17 \$1,922.35

Oct 18 \$3,913.60

Total Rounds of Golf

Oct 17 3,732

Oct 18 4,777

- ▶ Not So Frightening Friday Event

Oct 17 1,200

Oct 18 2,000

- ▶ Columbia Swim Club

Oct 17 1,201

Oct 18 1,446

V. Introductions

A. Park Ranger Herzog Whatley

VI. Old Business

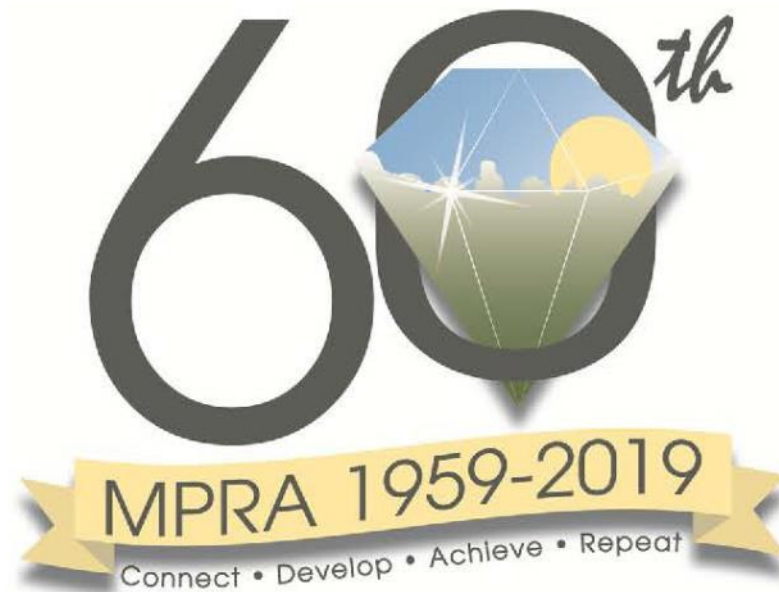
A. None.

VII. New Business

- A. MPRA Conference
- B. Rezoning – Westbury Village
- C. Rezoning – McBaine, along MKT Trail

MPRA Conference

Feb. 26–March 1, Branson Convention Center



Our deadline to register: January 14

Rezoning – Westbury Village

- ▶ Located between Scott Boulevard and Stone Valley Parkway
- ▶ Located within .5 miles of Louisville Park
- ▶ Current Zoning: PUD
- ▶ Request to rezone to PUD (Revised Statement of Intent) including M–N, M–C & R–MF
- ▶ Size: 45.2 Acres



**SITE OF
PROPOSED
RE-ZONING**

**LOUISVILLE
PARK**

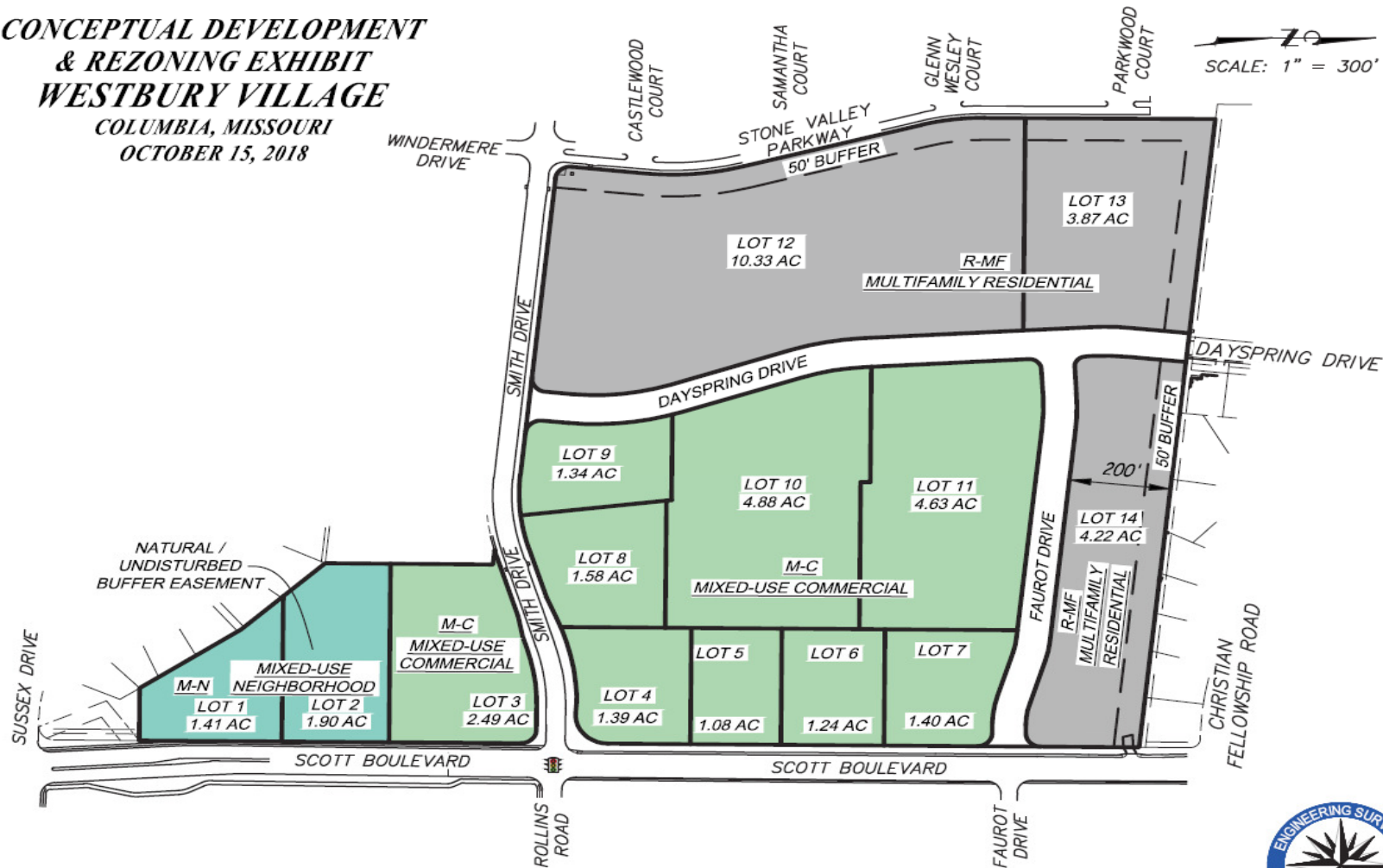
SMITH DRIVE

SCOTT BLVD

**CONCEPTUAL DEVELOPMENT
& REZONING EXHIBIT
WESTBURY VILLAGE**

COLUMBIA, MISSOURI
OCTOBER 15, 2018

SCALE: 1" = 300'



Engineering Surveys & Services

1113 Fay Street, Columbia, Missouri 65201
573 - 449 - 2646 | www.ess-inc.com

Missouri Engineering Corporation # 2004005018



ES&S NO. 14065

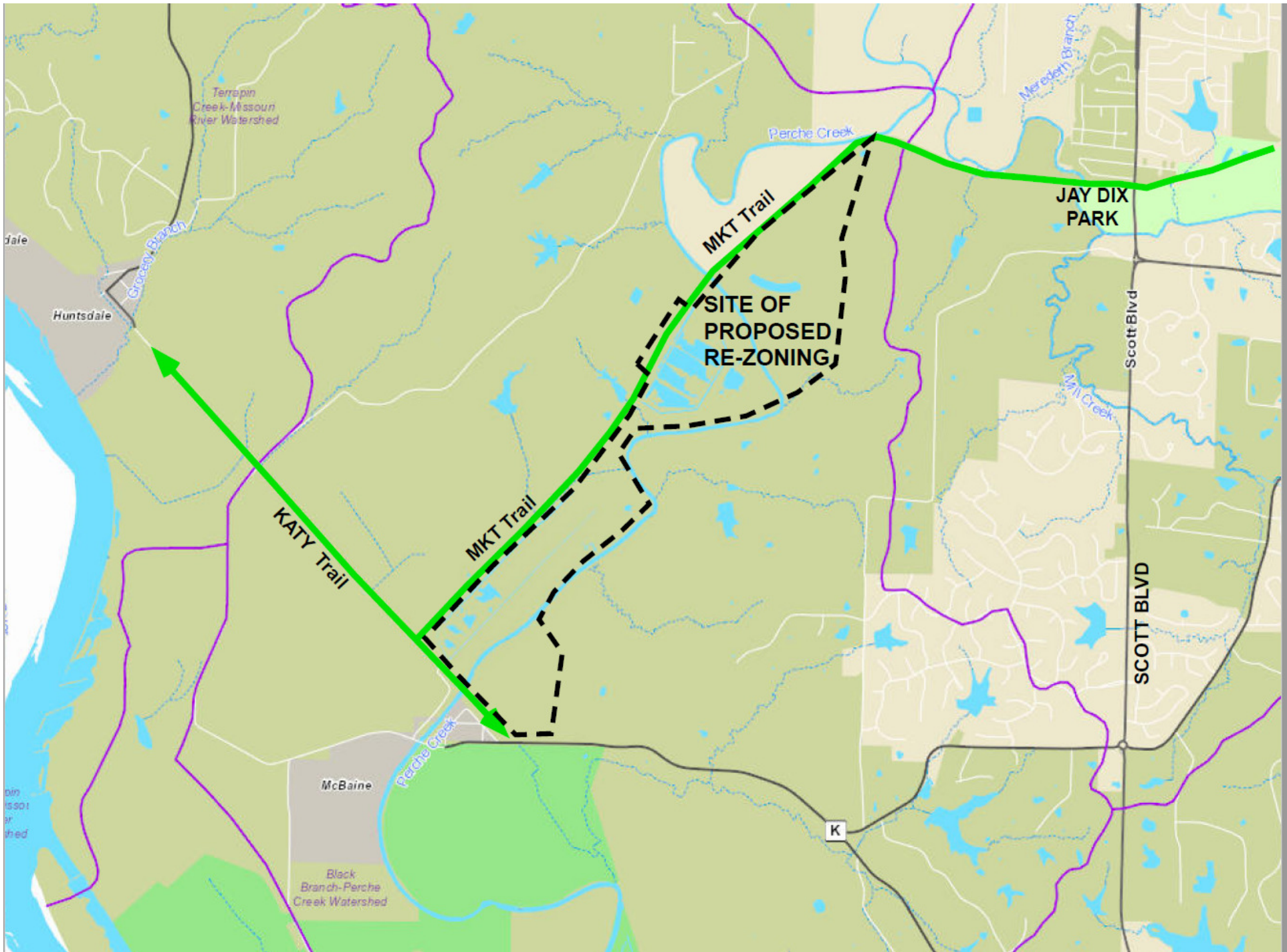


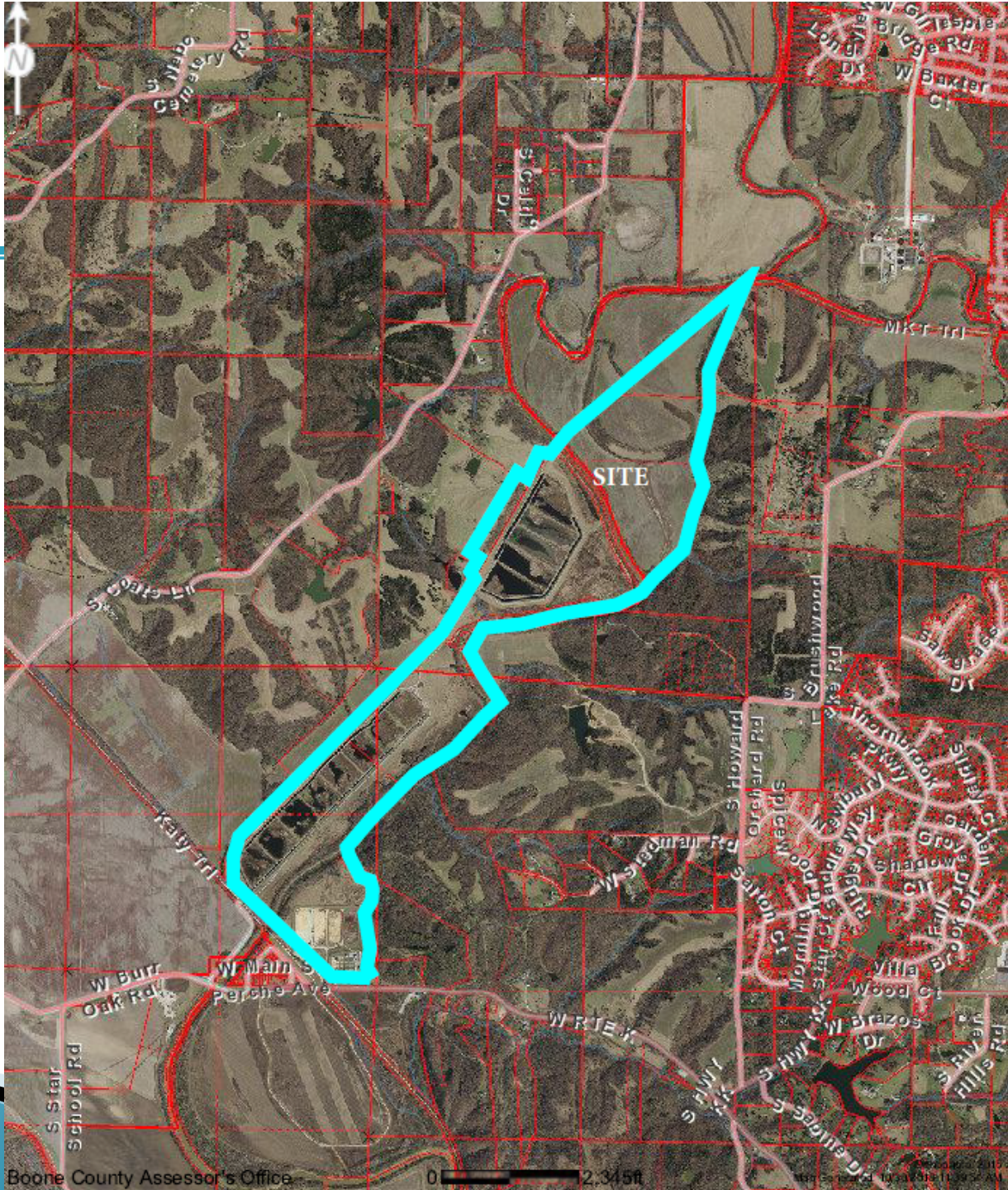
Rezoning – Westbury Village

- ▶ Park Staff sees no adverse impact due to the rezoning.

McBaine Property – MKT Trail

- ▶ Annexation of the City of Columbia Water Treatment Plant and Adjacent Parcels
- ▶ Located within .5 miles of the MKT Trail
- ▶ Request to rezone from Agriculture (County) to Agriculture (City)
- ▶ Size: 510.82 Acres





McBaine Property – MKT Trail

- ▶ Park Staff sees no adverse impact due to the rezoning.

IX. Reports

- A. Council Items
- B. Bicycle & Pedestrian Commission Report
- C. Capital Project Report
- D. Recreation Services Report

A. Council Items

- ▶ Lions–Stephens Park (Nov 19)
- ▶ Cosmo–Bethel small shelter replacement (Nov 19)
- ▶ Stephens Lake Park spraygrounds UV replacement (Nov 19)
- ▶ Oakwood Hills Park (Intro 11 / 19, approve Dec 3)
- ▶ Cross Country Course (Intro 12 / 17, approve Jan 7)

B. Bike & Ped Commission Report

- ▶ No Report. November meeting scheduled for Wednesday, 11/21.



C. Capital Project Report

CARE Office Remodel



Operation Clean Streets



Operation Clean Streets



Clary-Shy Ag Park



Clary-Shy Ag Park



Clary-Shy Ag Park



Clary-Shy Ag Park



Cosmo Park – Bocce Courts



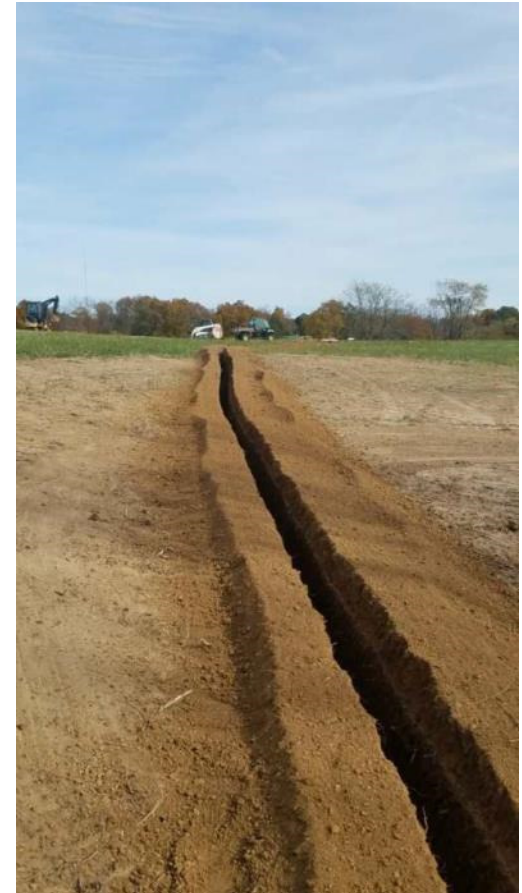
Cosmo Park – Bocce Courts



Gans Creek Recreation Area



Gans Creek Recreation Area



Gans Creek Recreation Area



Norma Sutherland Smith Park



Norma Sutherland Smith Park



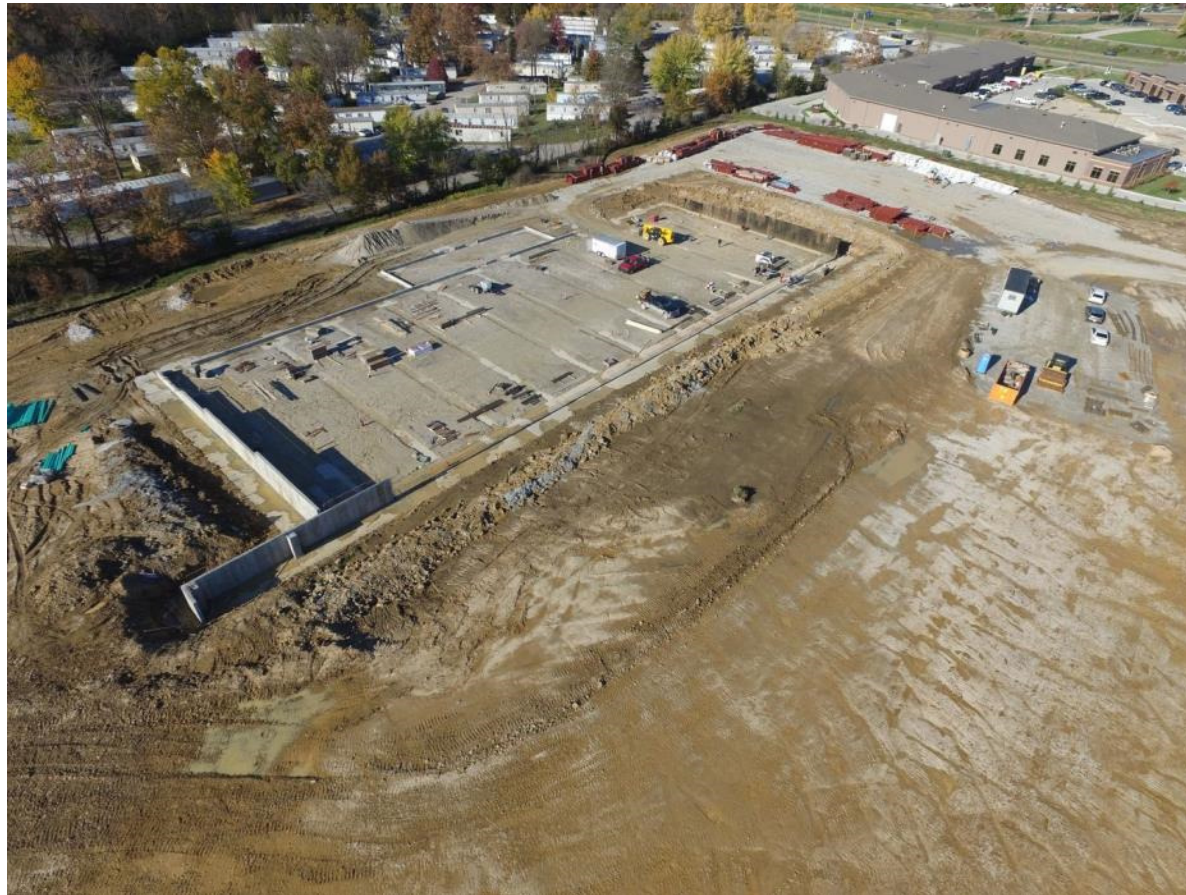
Norma Sutherland Smith Park



Norma Sutherland Smith Park



Sports Fieldhouse



Sports Fieldhouse



Sports Fieldhouse



Sports Fieldhouse



Sports Fieldhouse



Sports Fieldhouse



Albert Oakland Pickleball





D. Recreation Services Report

Not So Frightening Friday



Adult Sports



Fall softball and kickball ended, winter basketball and volleyball about to start

Adapted Sports



Aquatics



Halloween Costume Party



Tappercise at Hillcrest



Fencing at Hillcrest



50+ Katy Tram Day



Added second day to accommodate 30 participants



Silver and Gold Ladies



Amtrak trip to Washington, MO

Hands On Clay for Kids at the Armory



CARE Job Readiness classes

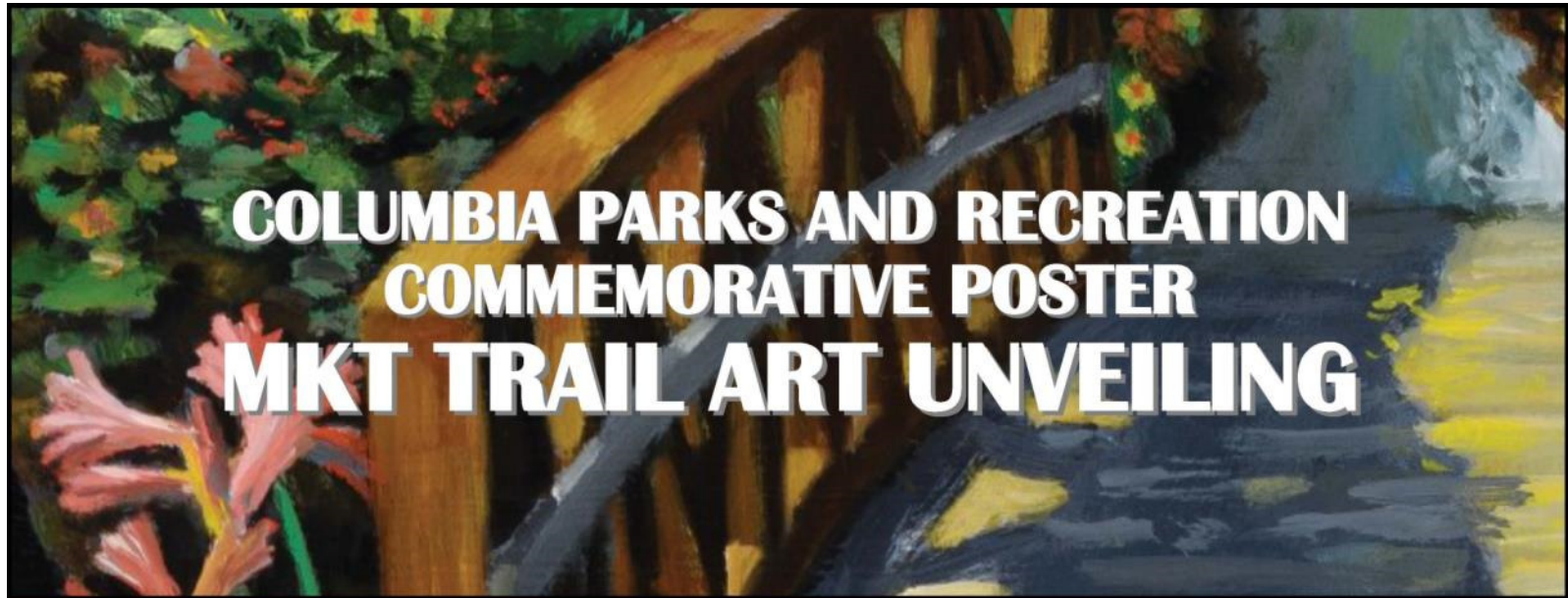


Upcoming Events

- ▶ Almeta Crayton Memorial Toys for Columbia Youth Drive, through Dec 10
- ▶ Homeless Youth Awareness Month Dodgeball Tournament, Nov 17
- ▶ Stonegrinder 7K Trail Run, Dec 1
- ▶ City Kwanzaa, Dec 1
- ▶ Lights and Sights Tour, Dec 7
- ▶ Central Columbia Holiday Party, Dec 11

IX. Staff Comments

- ▶ December Commission meeting
- ▶ Poster Unveiling




Tuesday, November 27

Walt's Bike Shop, 1217 Rogers St.

5:30 – 7pm

Complimentary appetizers, beer & nonalcoholic beverages
Poster signing with artist David Spear

 CoMoGives.com
#GivingTuesday

 Columbia
Parks and
Recreation Fund

 WALT'S
Bike Shop

 Columbia
Parks and
Recreation
Creating Community

P&R Commission Agenda

- x. Commission Comments to Staff
- xi. Public Comments
- xii. Next meeting date: Jan. 17, 2019
- xiii. Adjournment