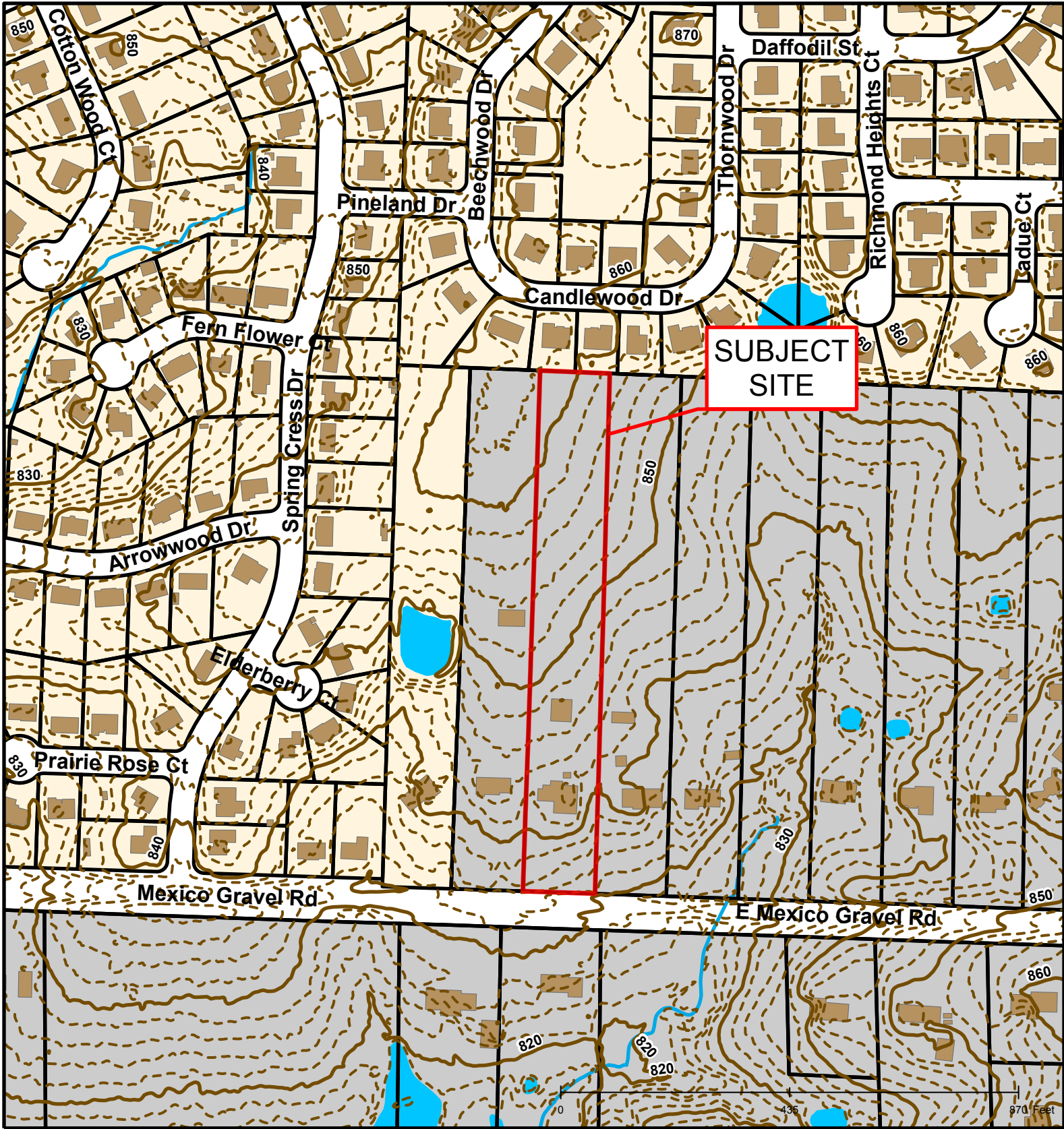




#18-131: Lewis & Smarr Subdivision Lot 3 Annexation & Zoning





#18-131: Lewis & Smarr Subdivision Lot 3 Annexation & Zoning

Roads	2 Foot Contour Lines	Bodies of Water
Building Footprint	Parcels	City Zoning
10 Foot Contour Lines	Stream	Boone County Zoning

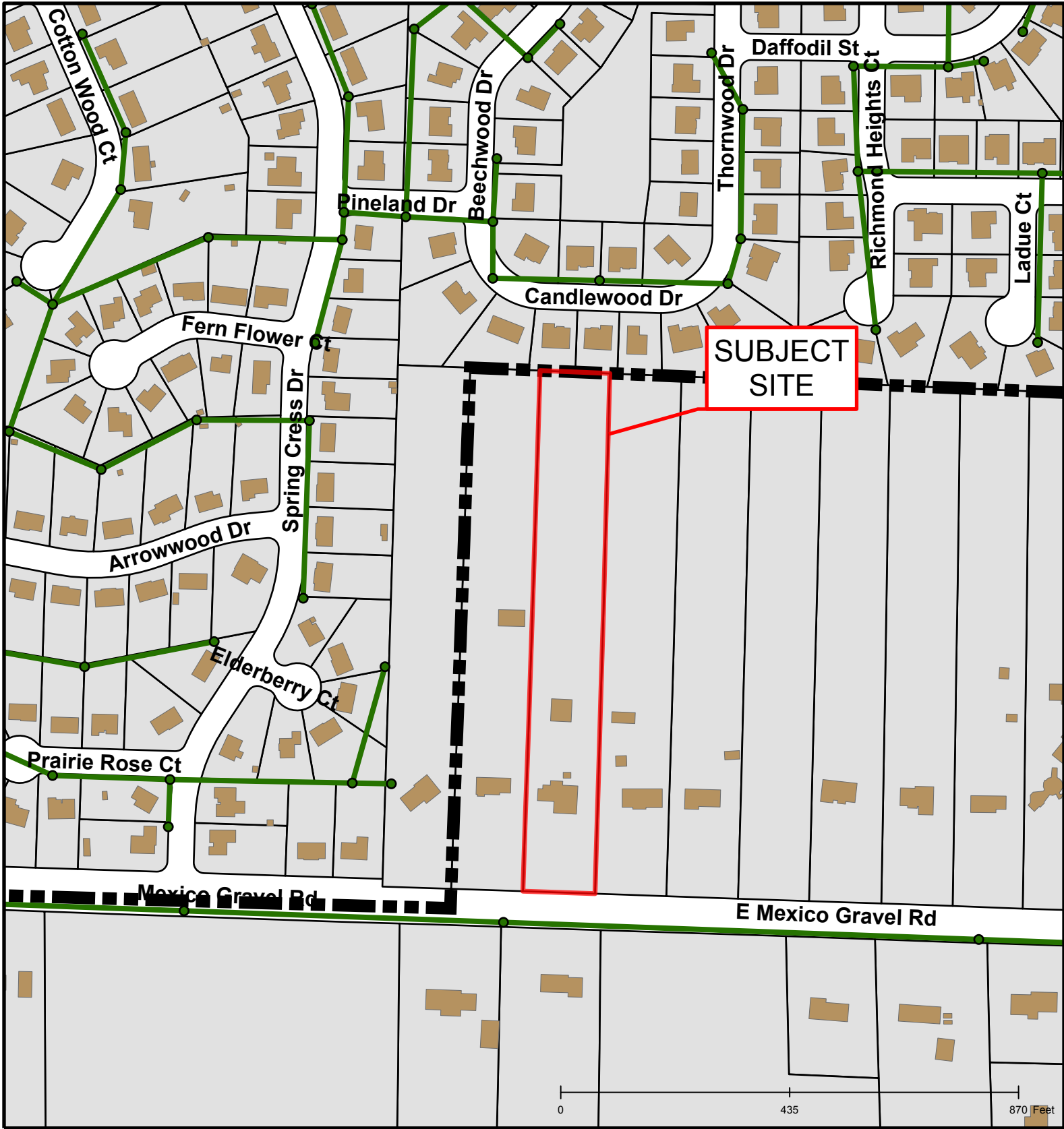


Created by The City of Columbia - Community Development Department

Parcel Data Source: Boone County Assessor

2015 Imagery: Boone County Assessor's Office

Hillshade Data: Boone County GIS Office



#18-131: Lewis & Smarr Subdivision Lot 3 Annexation & Zoning

