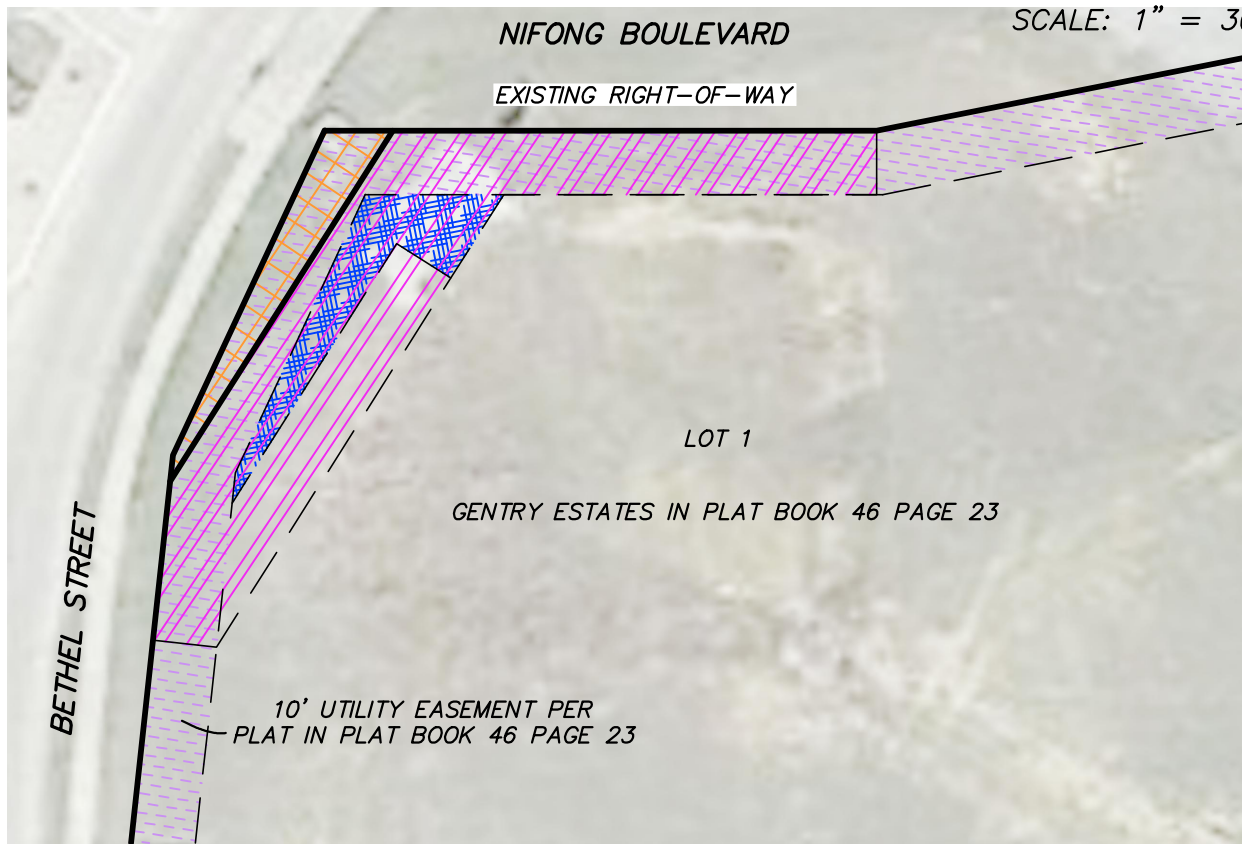


JEFFERY E. SMITH INVESTMENT CO., L.C.




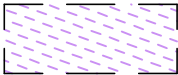


SCALE: 1" = 30'



TOTAL NEW PSE	=	329 SQ. FT.	OR	0.01 ACRE
PSE EXISTING EASEMENT OVERLAP	=	329 SQ. FT.		
TOTAL NEW PUE	=	395 SQ. FT.	OR	0.01 ACRE
TOTAL NEW ENCUMBERED PUE	=	395 SQ. FT.		
TOTAL NEW TCE	=	2,280 SQ. FT.	OR	0.05 ACRE
TCE EXISTING EASEMENT OVERLAP	=	1,303 SQ. FT.		
TCE NEW EASEMENT OVERLAP	=	395 SQ. FT.		
TOTAL NEW ENCUMBERED TCE	=	582 SQ. FT.		

LEGEND

-  TEMPORARY CONSTRUCTION EASEMENT AREA
-  PERMANENT STREET EASEMENT AREA
-  PERMANENT UTILITY EASEMENT AREA
-  EXISTING EASEMENT AREA
- PSE PERMANENT STREET EASEMENT
- PUE PERMANENT UTILITY EASEMENT
- TCE TEMPORARY CONSTRUCTION EASEMENT

**PARCEL 42
EASEMENT EXHIBIT
NIFONG BOULEVARD
IMPROVEMENTS
COLUMBIA, BOONE COUNTY, MISSOURI
SHEET 1 OF 1**

Engineering Surveys & Services
 1113 Fay Street, Columbia, Missouri 65201
 573 - 449 - 2646 | www.ess-inc.com
 Missouri Engineering Corporation # 2004005018



ES&S NO. 13504