

## #17-171: Perche Ridge Preliminary Plat



Roads	Boone County Zoning
City Zoning	Columbia City Limit
Parcels	CityViewparcels

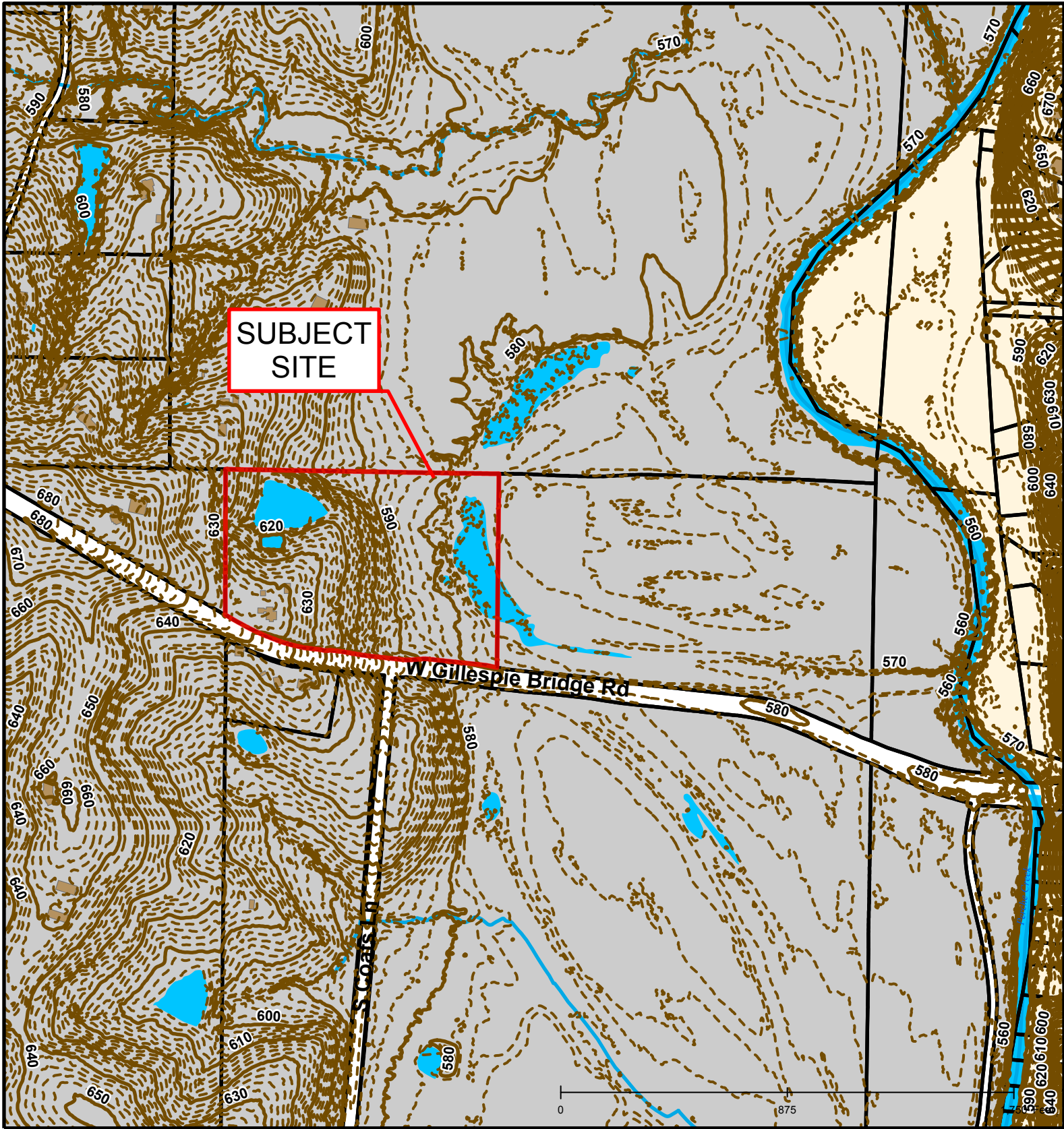


Created by The City of Columbia - Community Development Department

Parcel Data Source: Boone County Assessor








2015 Imagery: Boone County Assessor's Office

Hillshade Data: Boone County GIS Office



**SUBJECT SITE**

# #17-171: Perche Ridge Preliminary Plat

	Roads		Stream		Boone County Zoning
	Building Footprint		Bodies of Water		City Zoning
	Parcels				

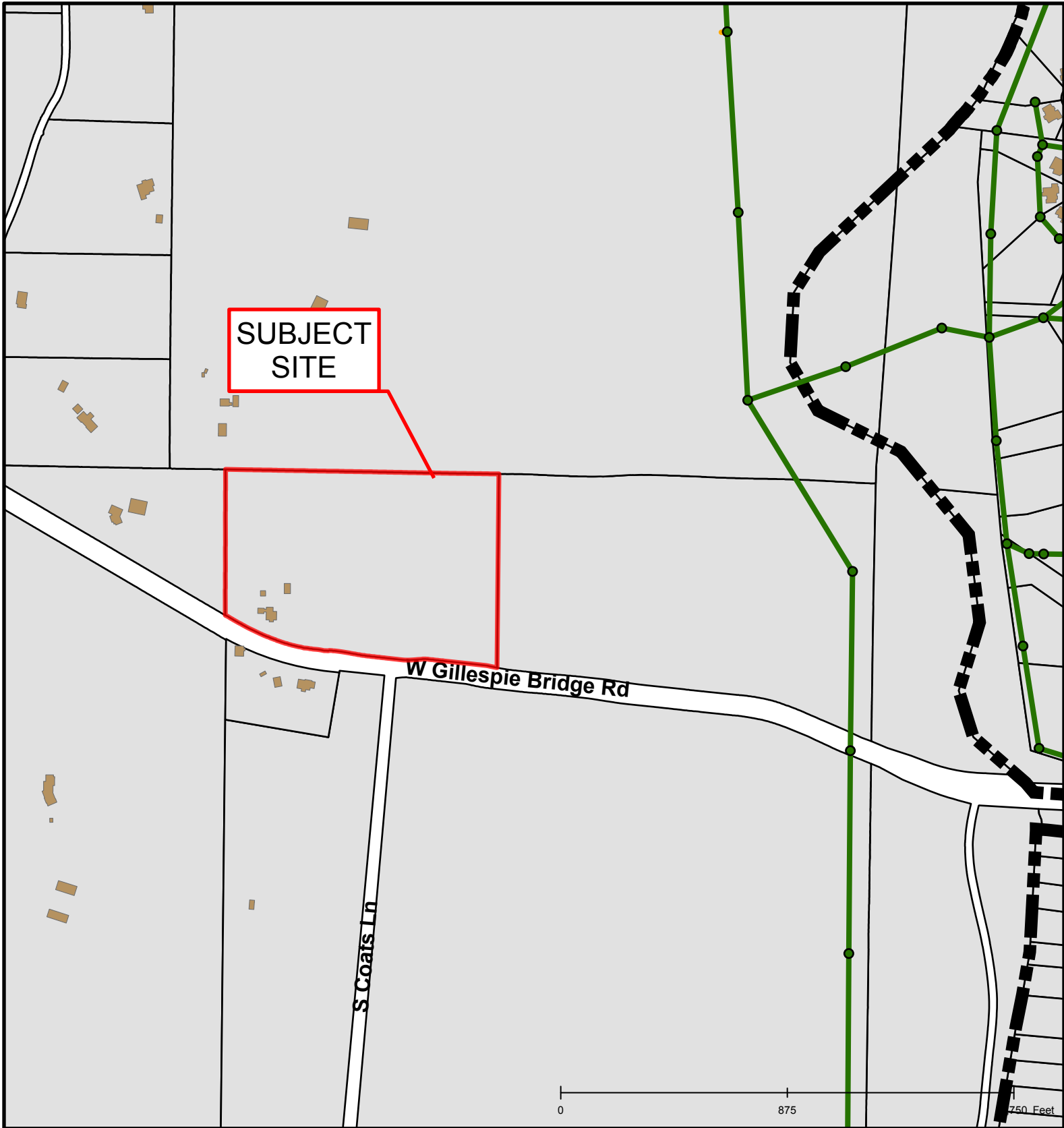


Created by The City of Columbia - Community Development Department

Parcel Data Source: Boone County Assessor

2015 Imagery: Boone County Assessor's Office

Hillshade Data: Boone County GIS Office



SUBJECT SITE

W Gillespie Bridge Rd

S Coats Ln

0 875 1750 Feet

# #17-171: Perche Ridge Preliminary Plat

City Sanitary Structure	Private Sanitary Line	Parcels
Roads	Columbia City Limit	CityViewparcels
City Sanitary Line	Building Footprint	



Created by The City of Columbia - Community Development Department

Parcel Data Source: Boone County Assessor

2015 Imagery: Boone County Assessor's Office

Hillshade Data: Boone County GIS Office