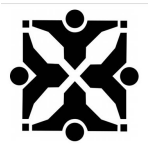




# #17-228: Gadbois Professional Offices PD Plan

	Roads		Columbia City Limit
	City Zoning		CityViewparcels
	Parcels		

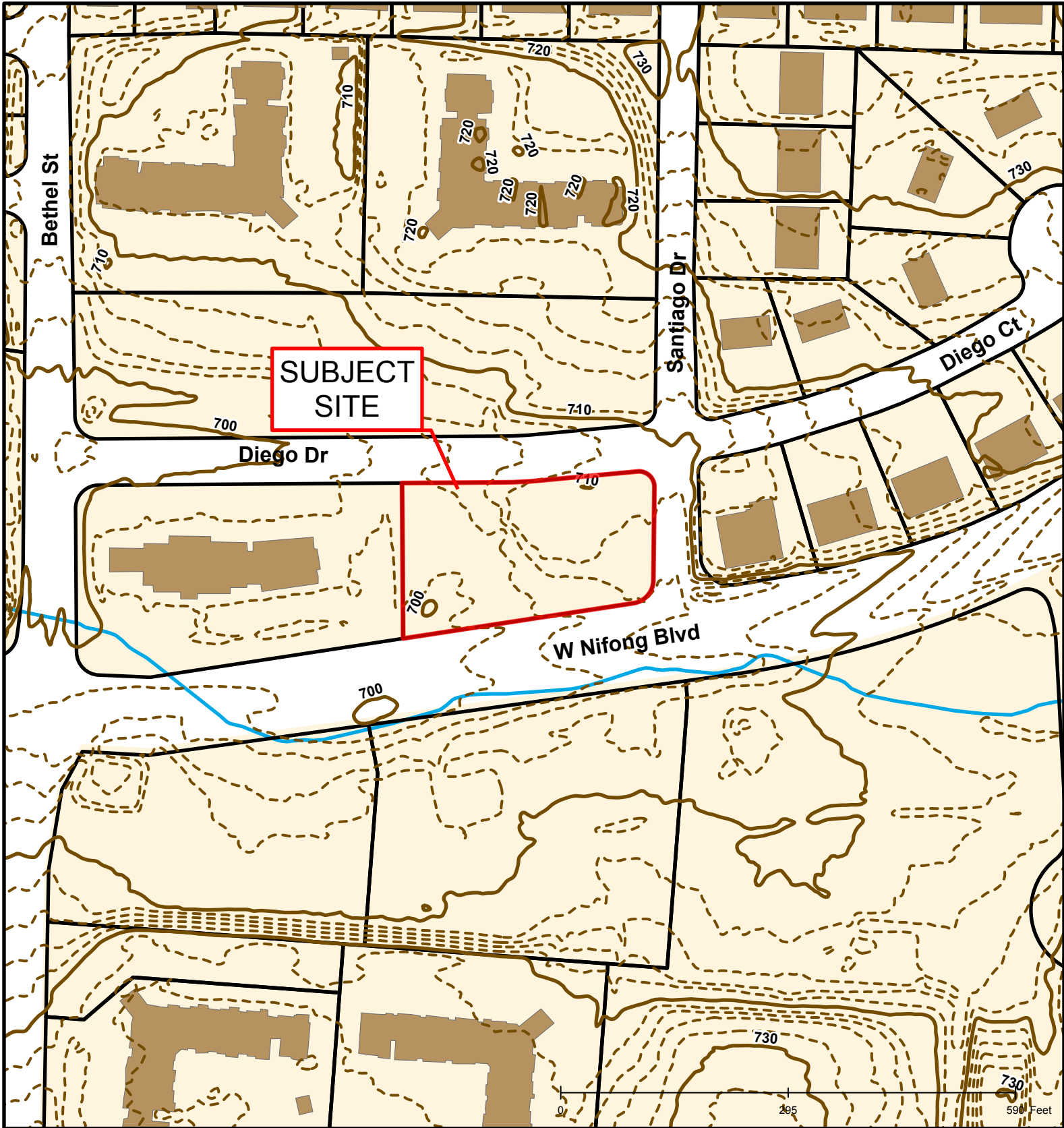


Created by The City of Columbia - Community Development Department

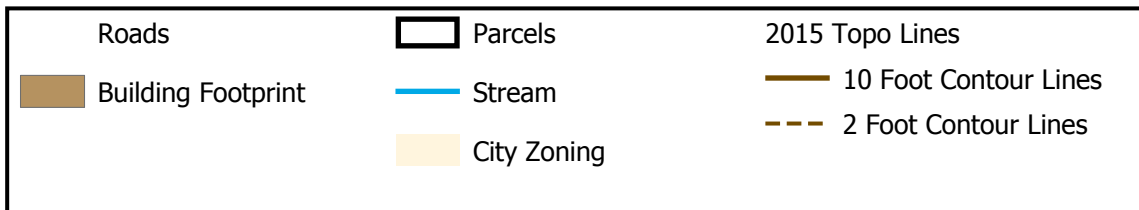
Parcel Data Source: Boone County Assessor

2015 Imagery: Boone County Assessor's Office

Hillshade Data: Boone County GIS Office



# #17-228: Gadbois Professional Offices PD Plan



Created by The City of Columbia - Community Development Department

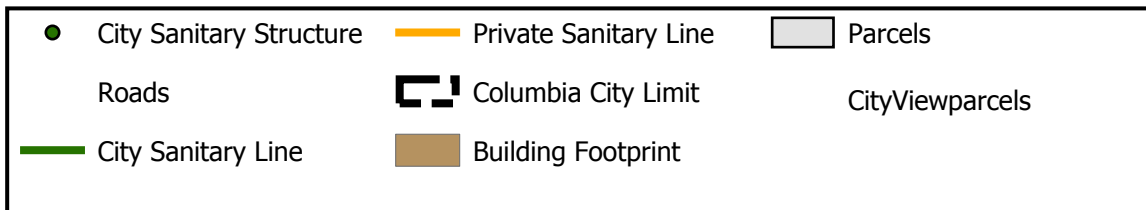
Parcel Data Source: Boone County Assessor

2015 Imagery: Boone County Assessor's Office

Hillshade Data: Boone County GIS Office



# #17-228: Gadbois Professional Offices PD Plan



Created by The City of Columbia - Community Development Department

Parcel Data Source: Boone County Assessor

2015 Imagery: Boone County Assessor's Office

Hillshade Data: Boone County GIS Office