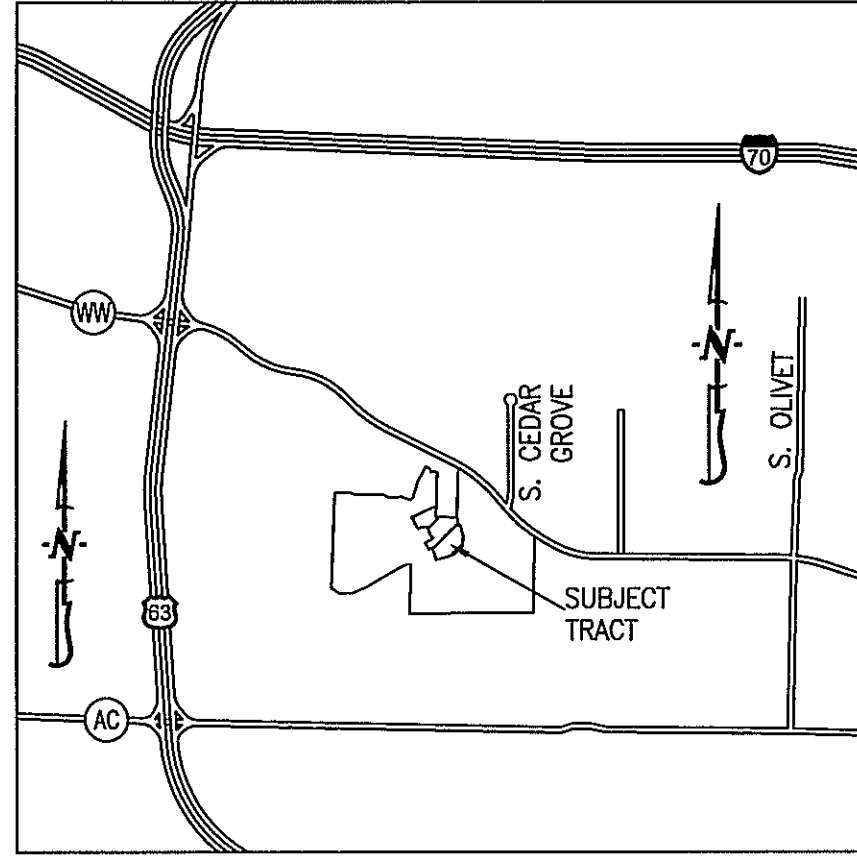
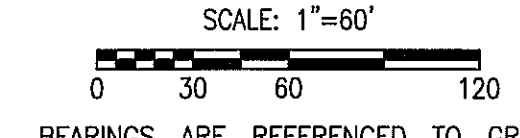


FINAL PLAT THE VINEYARDS, PLAT No. 3

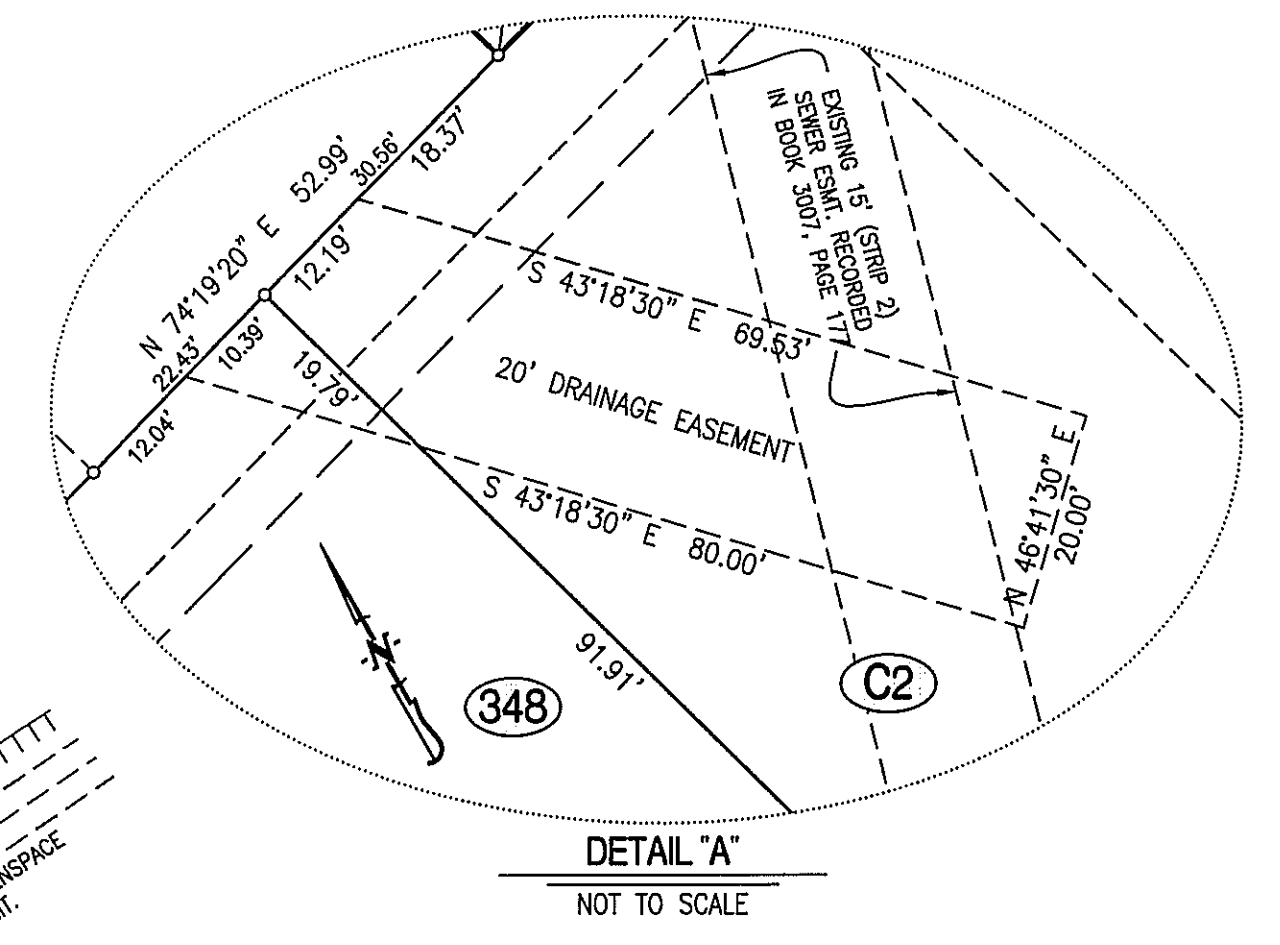
A MAJOR SUBDIVISION LOCATED IN THE WEST 1/2 OF SECTION 22, & THE
 EAST 1/2 OF SECTION 21, TOWNSHIP 48 NORTH, RANGE 12 WEST
 COLUMBIA, BOONE COUNTY, MISSOURI
 MAY 16, 2016
 CASE #16-128



LOCATION MAP
 NOT TO SCALE

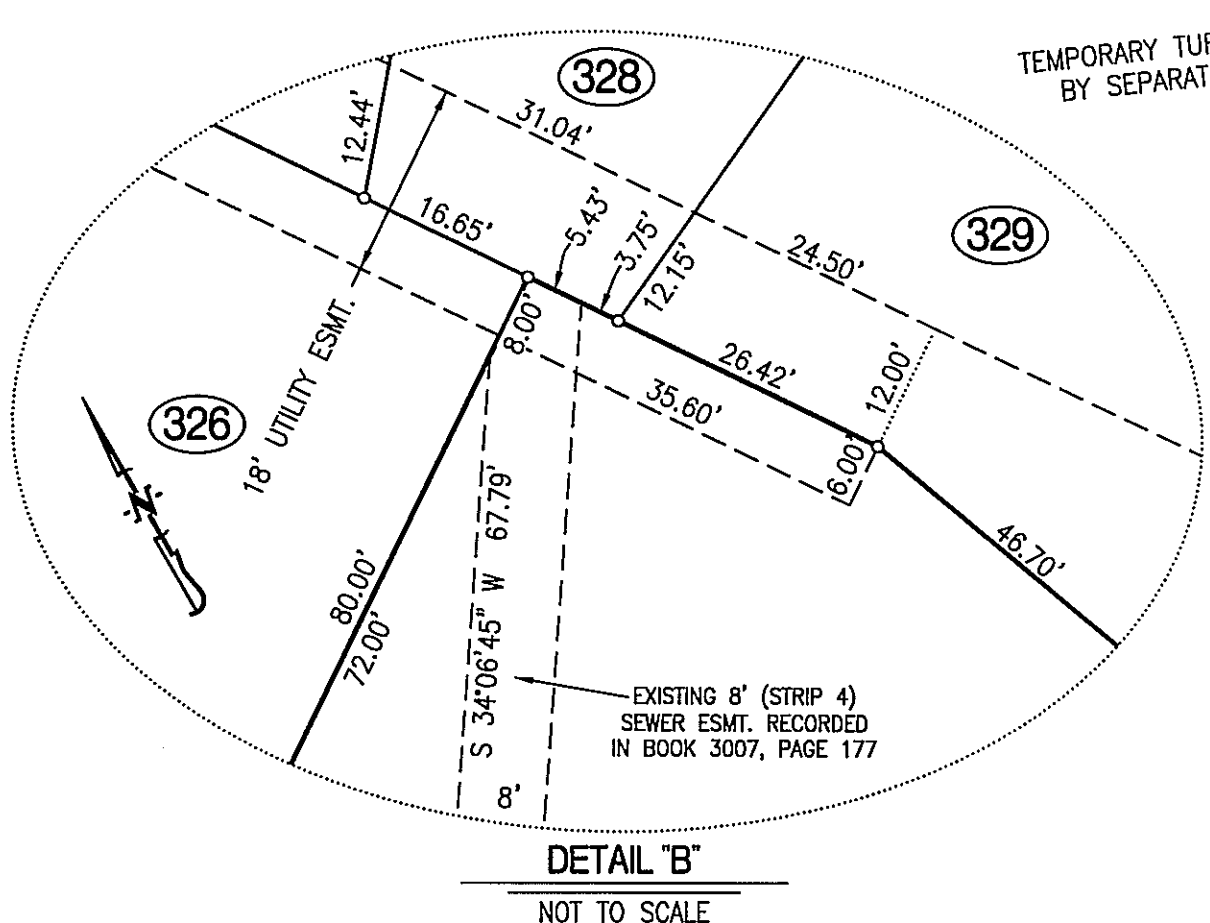


BEARINGS ARE REFERENCED TO GRID NORTH, OF THE MISSOURI STATE PLANE COORDINATE SYSTEM (CENTRAL ZONE), OBTAINED FROM GPS OBSERVATION.



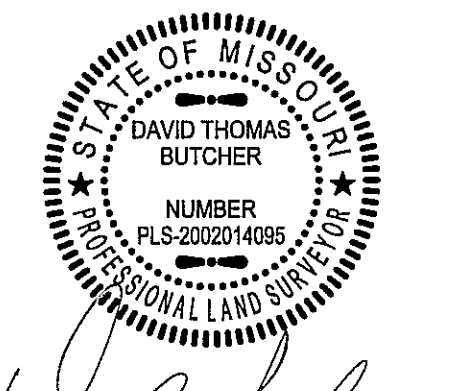
DETAIL 'A'
 NOT TO SCALE

CURVE	RADIUS	LENGTH	CHORD	CH DIST
1	800.00'	466.04'	S 88°59'20" E	459.48'
2	20.00'	30.36'	N 50°23'35" W	27.53'
3	20.00'	30.36'	N 36°34'20" E	27.53'
4	20.00'	16.69'	S 30°48'50" E	16.21'
5	20.00'	16.69'	S 16°59'35" W	16.21'
6	125.00'	90.76'	S 3°06'00" E	88.78'
7	240.00'	334.22'	N 15°59'35" E	307.86'
8	20.00'	28.24'	S 89°56'00" E	25.96'
9	20.00'	28.24'	N 9°01'05" W	25.96'
10	250.00'	187.94'	N 27°56'25" W	183.54'
11	21.53'	16.23'	S 33°46'40" W	15.85'
12	20.00'	18.82'	S 11°14'55" W	18.13'
13	20.00'	29.82'	N 29°35'20" W	27.13'
14	20.00'	34.80'	N 57°46'35" E	30.57'
15	400.00'	85.28'	S 66°11'30" E	85.12'
16	20.00'	27.01'	N 22°21'20" W	25.00'
17	20.00'	26.93'	N 54°54'25" E	24.94'
18	270.00'	303.97'	S 87°39'50" W	288.17'
19	430.00'	108.49'	N 65°04'20" W	108.21'
20	180.00'	44.86'	N 74°28'15" W	44.74'



DETAIL 'B'
 NOT TO SCALE

- LEGEND:**
- E EXISTING
 - S SET
 - 1/2" IRON PIPE (UNLESS NOTED OTHERWISE)
 - PERMANENT MONUMENT
 - (M) MEASURED DISTANCE
 - (REC) RECORDED DISTANCE
 - (R) RADIAL LINE
 - DH x DRILL HOLE
 - W/ CHISELED X
 - P.O.B. POINT OF BEGINNING



DAVID T. BUTCHER, PLS-2002014095
 8/5/2016
 DATE