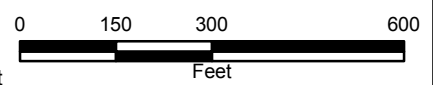


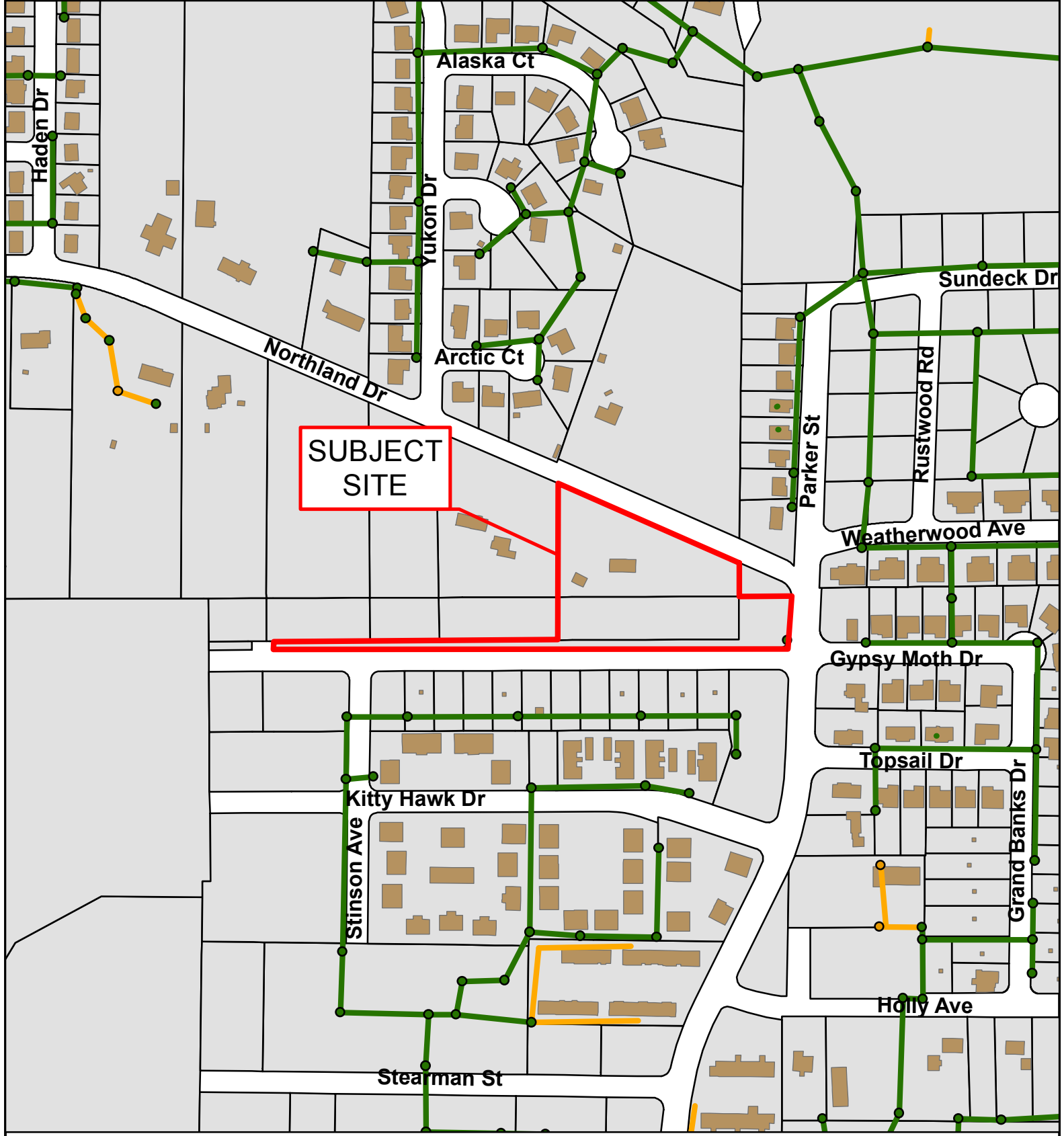
2015 Orthophoto Source: Boone County Assessor

16-137: Kitty Hawk Manor, Plat No. 6 Preliminary Plat



- City Zoning
- Parcels
- Boone County Zoning
- Columbia City Limit



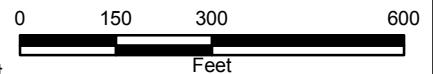


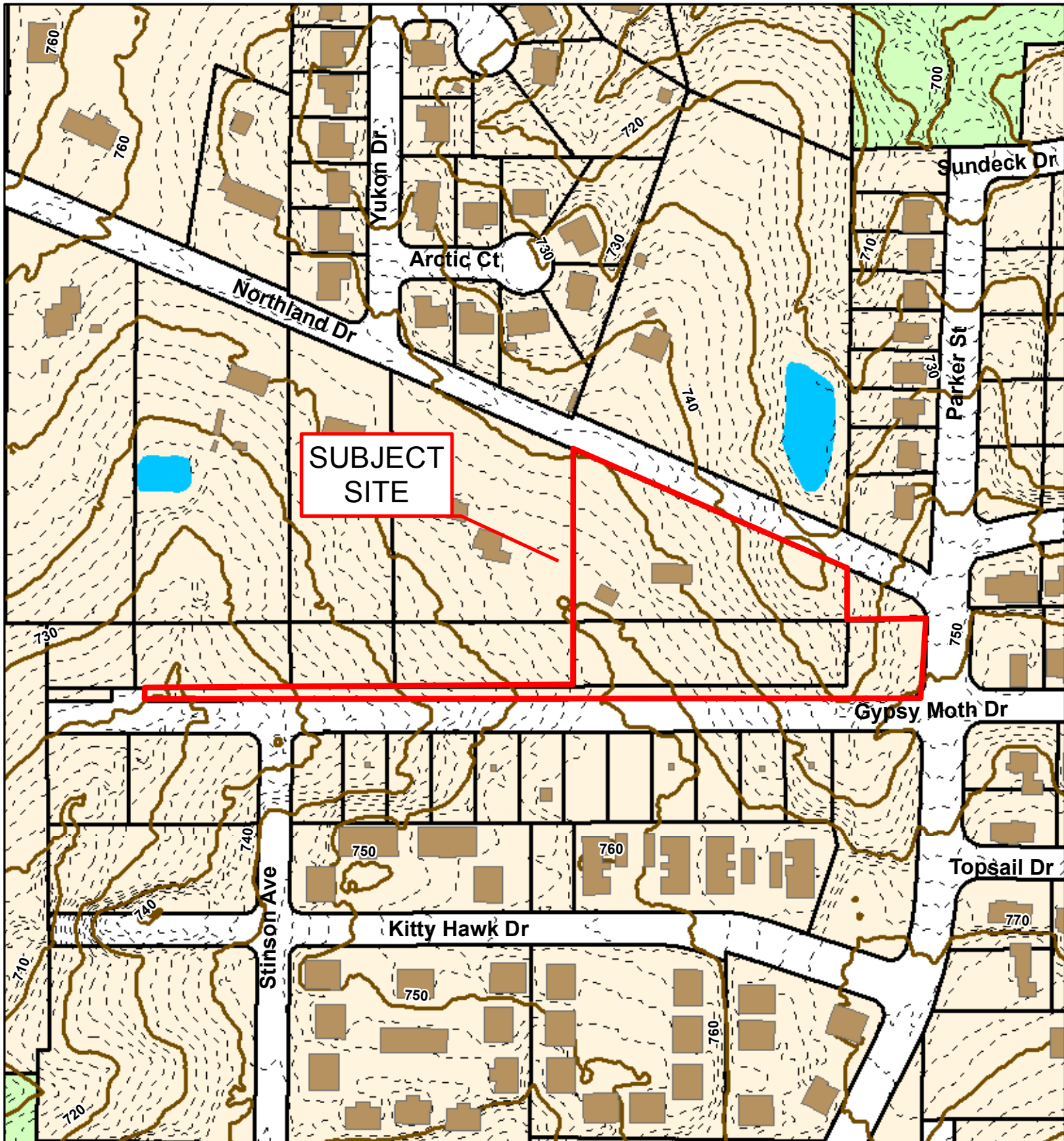
SUBJECT SITE

16-137: Kitty Hawk Manor, Plat No. 6 Preliminary Plat



- City Sanitary Structure — City Sanitary Line ■ Building Footprint
- Private Sanitary Structure — Private Sanitary Line ■ Parcels





16-137: Kitty Hawk Manor, Plat No. 6 Preliminary Plat



- 10 Foot Contour Lines
- - - 2 Foot Contour Lines
- Building Footprint
- Parcels

