

②
COLT RAILROAD
 (CITY OF COLUMBIA)
 1.61 ACRES PERM. ESMT.
 (ROADWAY & UTILITY)

"THIS MEDIA SHOULD NOT BE CONSIDERED A CERTIFIED DOCUMENT."

DATE PREPARED
12/18/2019

ROUTE	STATE
VAR.	MO
DISTRICT	SHEET NO.
CD	3

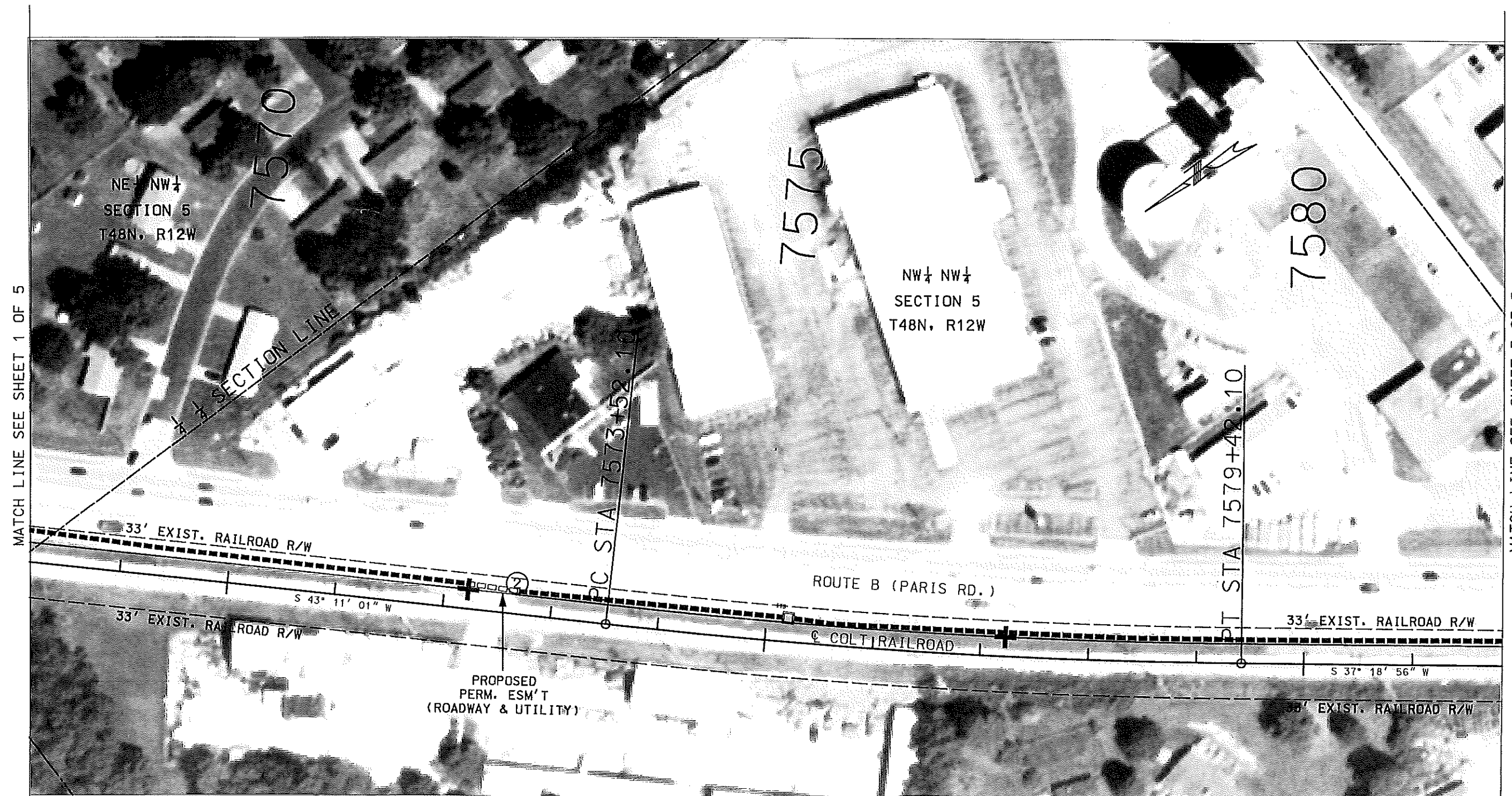
COUNTY
BOONE

JOB NO.
J5P3427

CONTRACT ID.

PROJECT NO.

BRIDGE NO.



MATCH LINE SEE SHEET 1 OF 5

MATCH LINE SEE SHEET 3 OF 5

DESCRIPTION	DATE

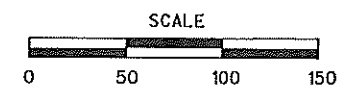
MISSOURI HIGHWAYS AND TRANSPORTATION COMMISSION

105 WEST CAPITOL
JEFFERSON CITY, MO 65102
1-888-ASK-MODOT (1-888-275-6636)

IF A SEAL IS PRESENT ON THIS SHEET IT HAS BEEN ELECTRONICALLY SEALED AND DATED.

FIBER INTERCONNECT LEGEND

- | | | |
|--------------------------|----------------------|---------------------|
| CONTROLLER (EXISTING) | PULL BOX (EXISTING) | 2" CONDUIT TRENCHED |
| POWER SUPPLY (EXISTING) | ITS PULL BOX CLASS 2 | 2" CONDUIT PUSHED |
| MAST ARM BASE (EXISTING) | ITS PULL BOX CLASS 5 | 2" CONDUIT BRIDGE |
| | | CONDUIT (EXISTING) |



PLAN SHEET
 ROUTE B (PARIS RD.)
 SHEET 2 OF 5

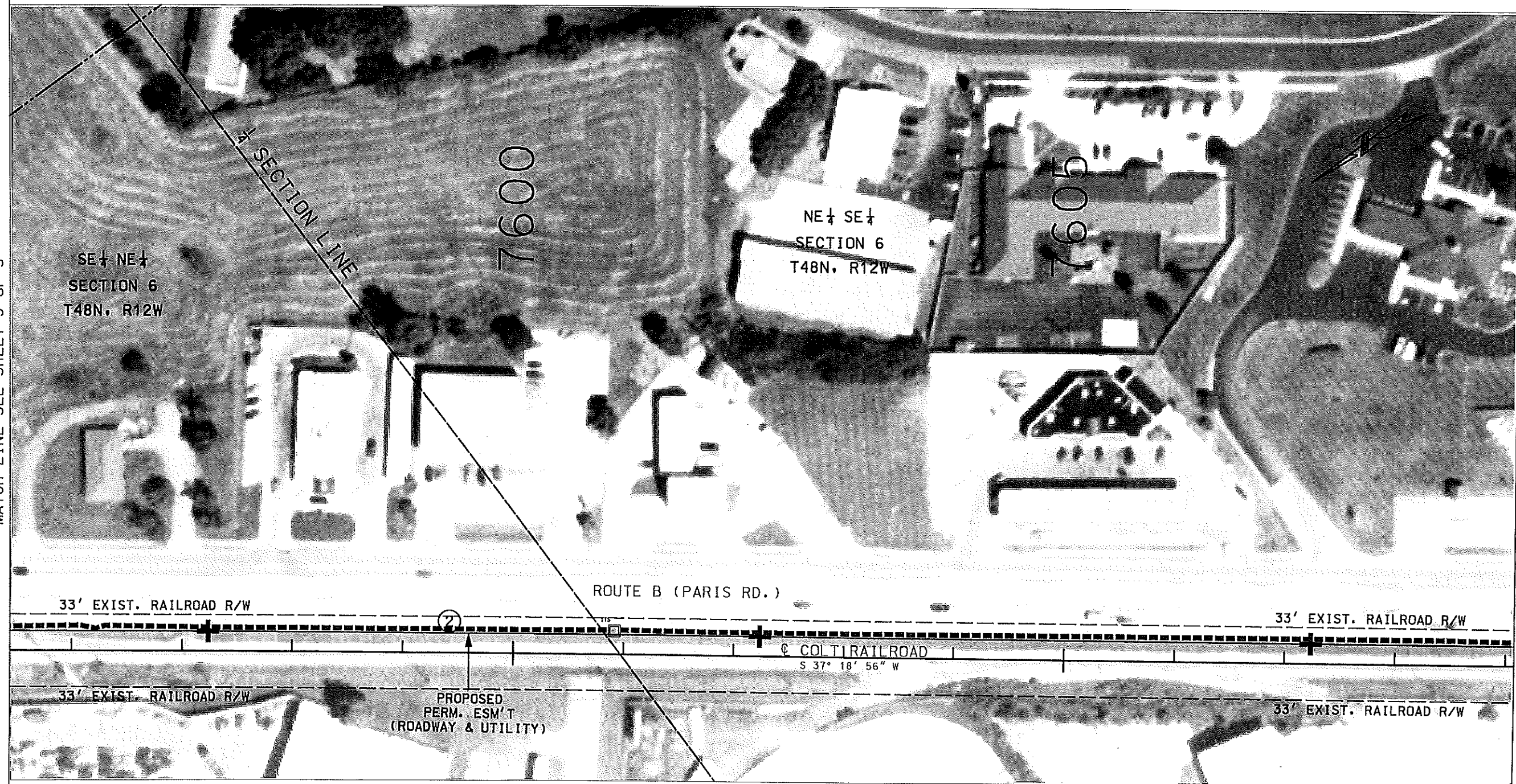
②
COLT RAILROAD
(CITY OF COLUMBIA)
 1.61 ACRES PERM. ESMT.
 (ROADWAY & UTILITY)

"THIS MEDIA SHOULD NOT BE CONSIDERED A CERTIFIED DOCUMENT."

DATE PREPARED
 12/18/2019
 ROUTE VAR. STATE MO
 DISTRICT CD SHEET NO. 5
 COUNTY BOONE
 JOB NO. J5P3427
 CONTRACT TO.
 PROJECT NO.
 BRIDGE NO.


MATCH LINE SEE SHEET 3 OF 5

MATCH LINE SEE SHEET 5 OF 5



DATE	DESCRIPTION

MISSOURI HIGHWAYS AND TRANSPORTATION COMMISSION

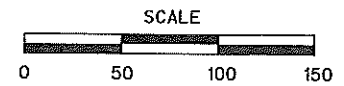


105 WEST CAPITOL
 JEFFERSON CITY, MO 65102
 1-888-ASK-MODOT (1-888-275-6636)

IF A SEAL IS PRESENT ON THIS SHEET IT HAS BEEN ELECTRONICALLY SEALED AND DATED.

FIBER INTERCONNECT LEGEND

CONTROLLER (EXISTING)	PULL BOX (EXISTING)	2" CONDUIT TRENCHED
POWER SUPPLY (EXISTING)	ITS PULL BOX CLASS 2	2" CONDUIT PUSHED
MAST ARM BASE (EXISTING)	ITS PULL BOX CLASS 5	2" CONDUIT BRIDGE
		CONDUIT (EXISTING)



PLAN SHEET
 ROUTE B (PARIS RD.)
 SHEET 4 OF 5

②
 COLT RAILROAD
 (CITY OF COLUMBIA)
 1.61 ACRES PERM. ESMT.
 (ROADWAY & UTILITY)

"THIS MEDIA SHOULD NOT BE CONSIDERED A CERTIFIED DOCUMENT."

DATE PREPARED
12/18/2019

ROUTE VAR.	STATE MO
DISTRICT CD	SHEET NO. 6

COUNTY
BOONE

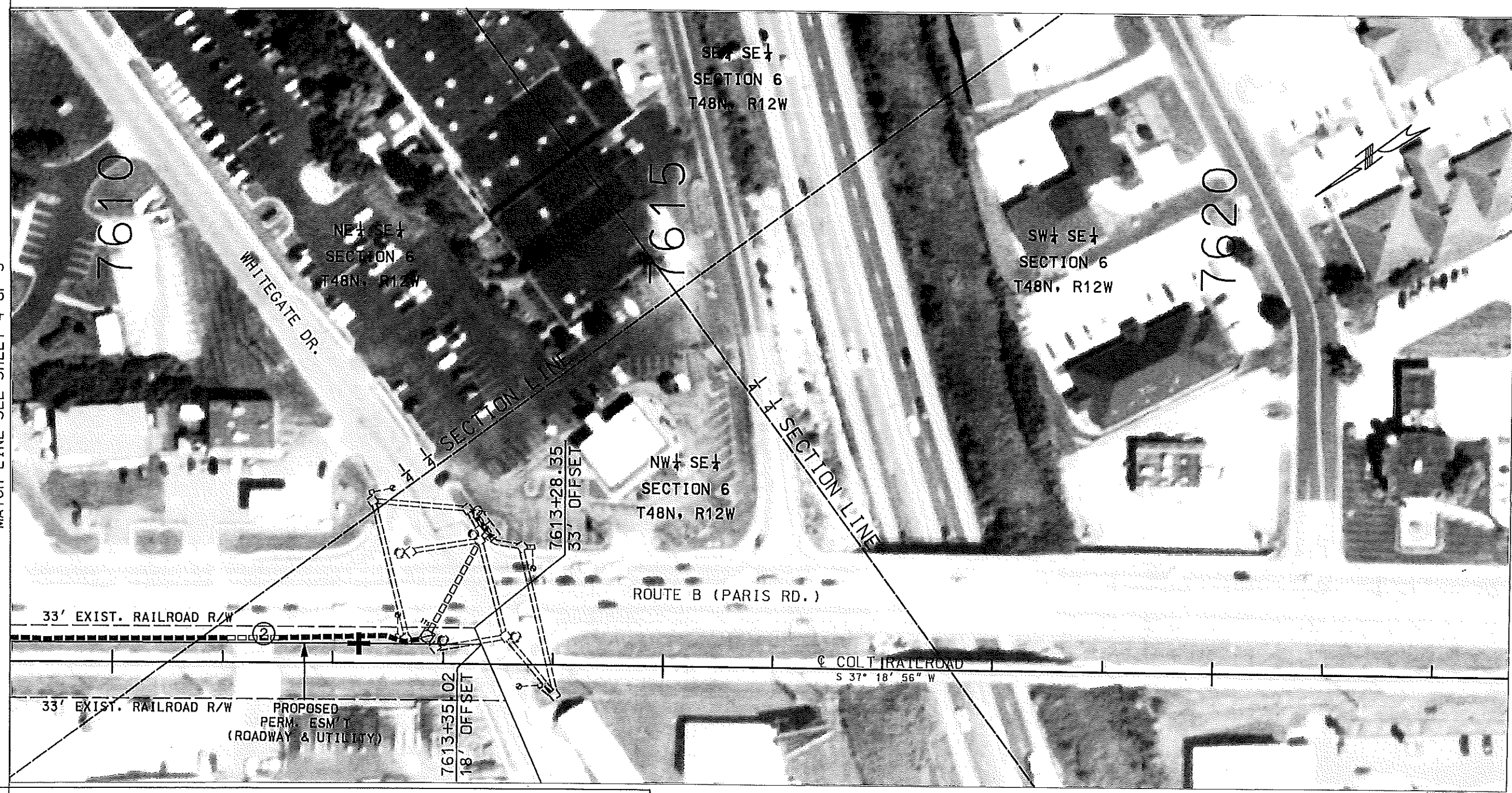
JOB NO.
J5P3427

CONTRACT ID.

PROJECT NO.

BRIDGE NO.

MATCH LINE SEE SHEET 4 OF 5



DESCRIPTION

DATE

MISSOURI HIGHWAYS AND TRANSPORTATION COMMISSION

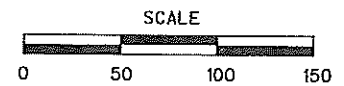


105 WEST CAPITOL
JEFFERSON CITY, MO 65102
1-888-ASK-MODOT (1-888-275-6636)

IF A SEAL IS PRESENT ON THIS SHEET IT HAS BEEN ELECTRONICALLY SEALED AND DATED.

FIBER INTERCONNECT LEGEND

CONTROLLER (EXISTING)	PULL BOX (EXISTING)	2" CONDUIT TRENCHED
POWER SUPPLY (EXISTING)	ITS ITS PULL BOX CLASS 2	2" CONDUIT PUSHED
MAST ARM BASE (EXISTING)	ITS ITS PULL BOX CLASS 5	2" CONDUIT BRIDGE
		CONDUIT (EXISTING)



PLAN SHEET
 ROUTE B (PARIS RD.)
 SHEET 5 OF 5