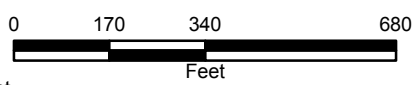


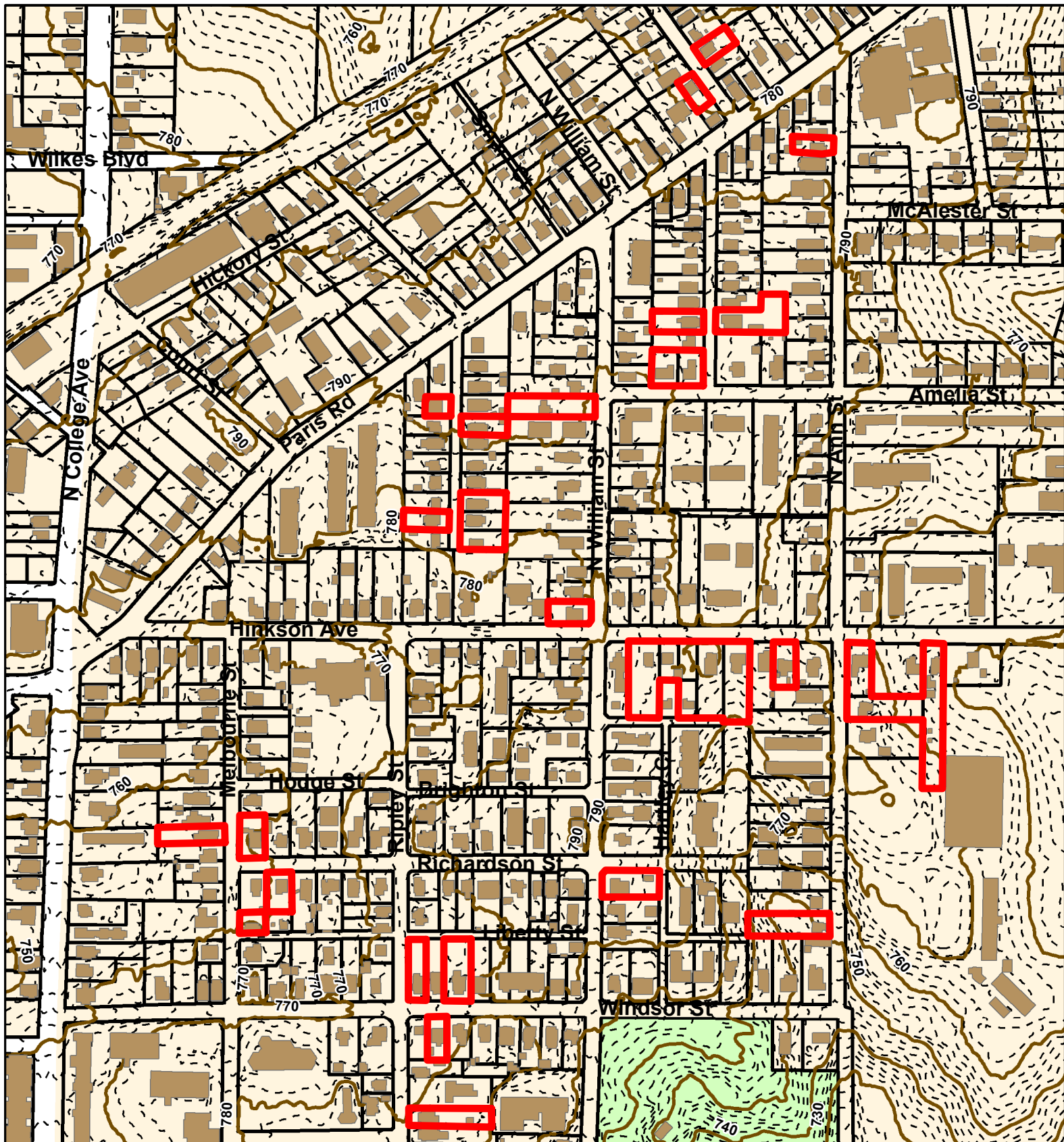
2015 Orthophoto Source: Boone County Assessor

17-23: Benton-Stephens Rezoning



- City Zoning
- Boone County Zoning
- Parcels
- Columbia City Limit



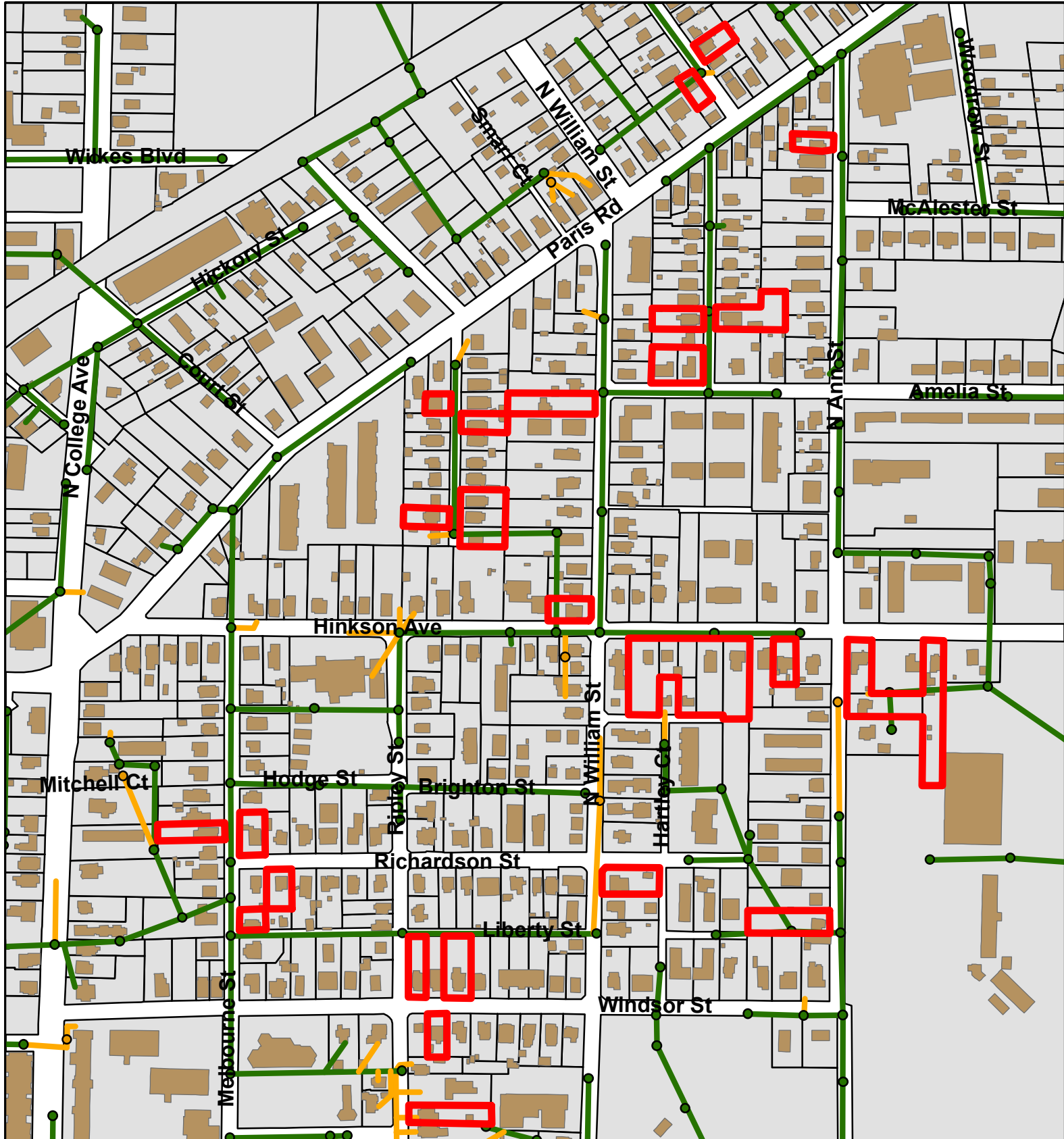


17-23: Benton-Stephens Rezoning



- 10 Foot Contour Lines
- 2 Foot Contour Lines
- Parcels
- Building Footprint





17-23: Benton-Stephens Rezoning

- City Sanitary Structure
- Private Sanitary Structure

