



#18-122: Central Missouri Islamic Subdivision Plat 1 (Replat) & Design Adjustments

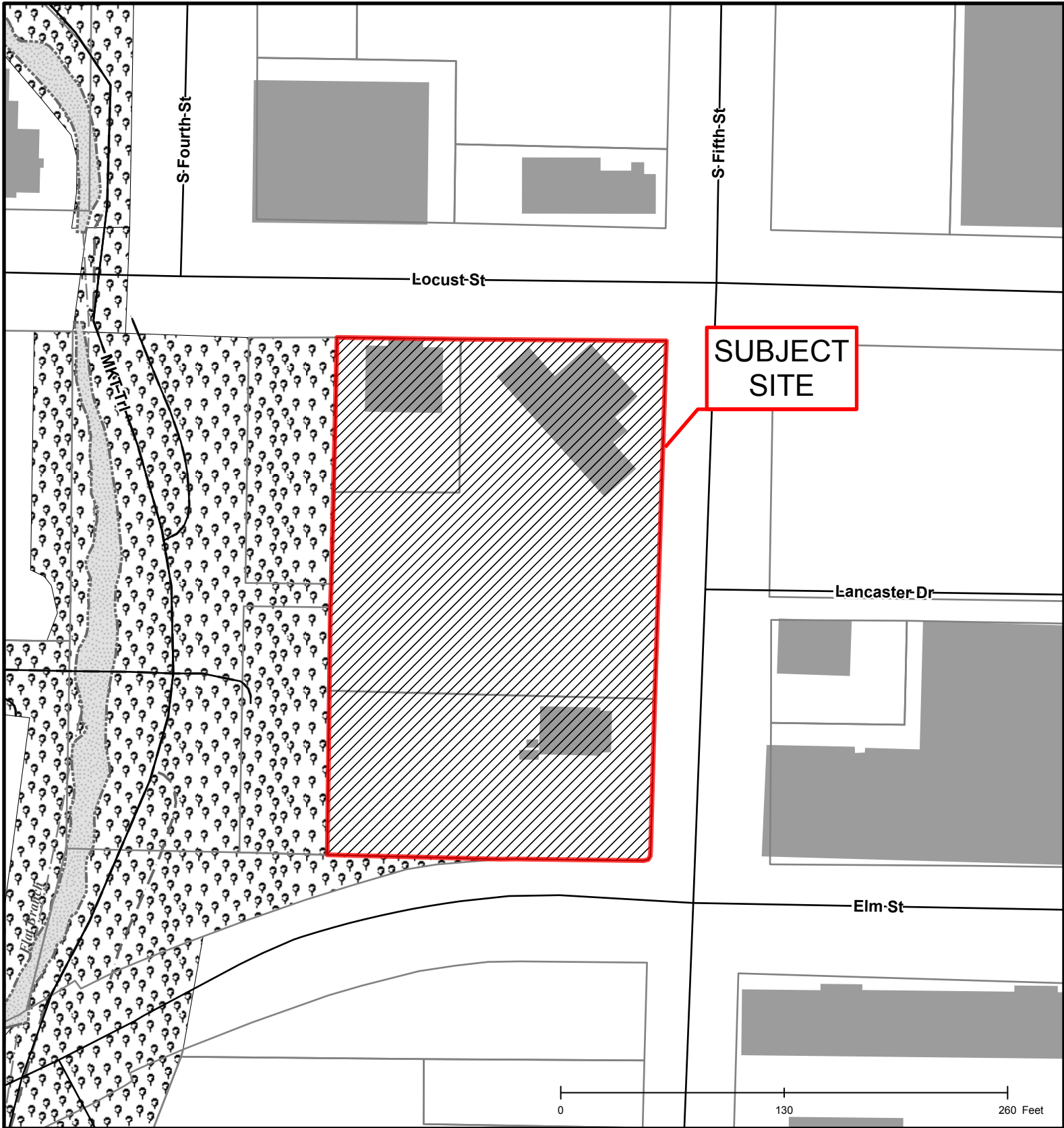


Created by The City of Columbia - Community Development Department

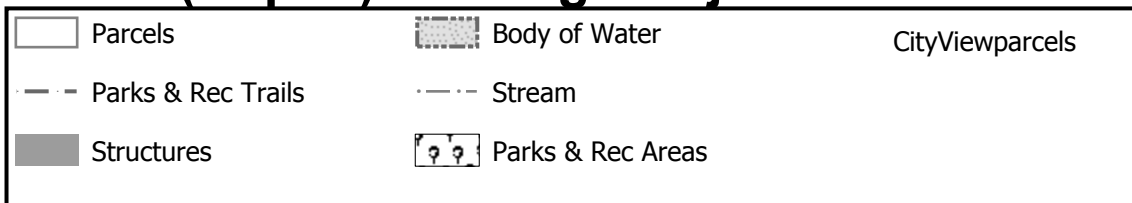
Parcel Data Source: Boone County Assessor

2015 Imagery: Boone County Assessor's Office

Hillshade Data: Boone County GIS Office



#18-122: Central Missouri Islamic Subdivision Plat 1 (Replat) & Design Adjustments

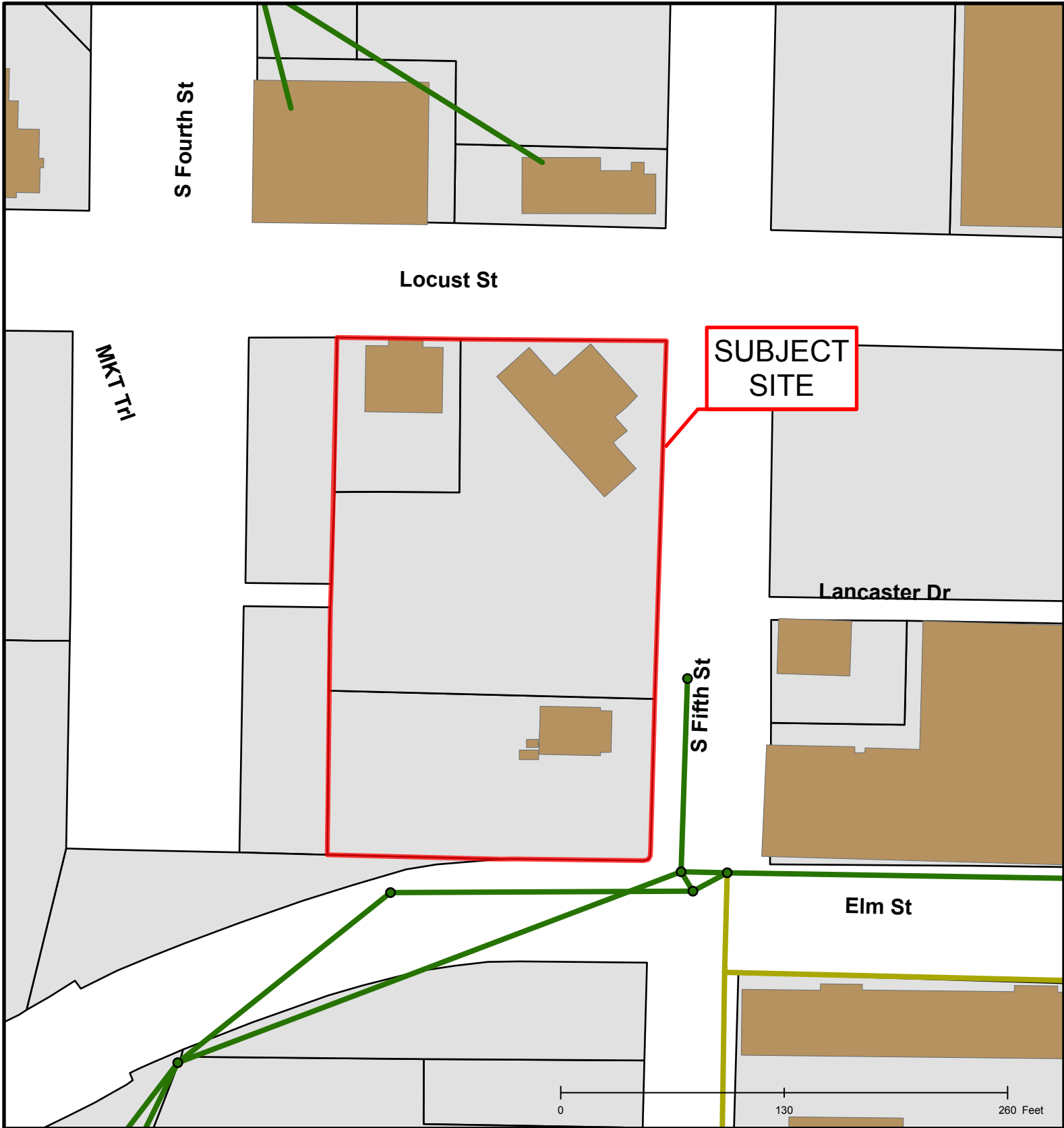


Created by The City of Columbia - Community Development Department

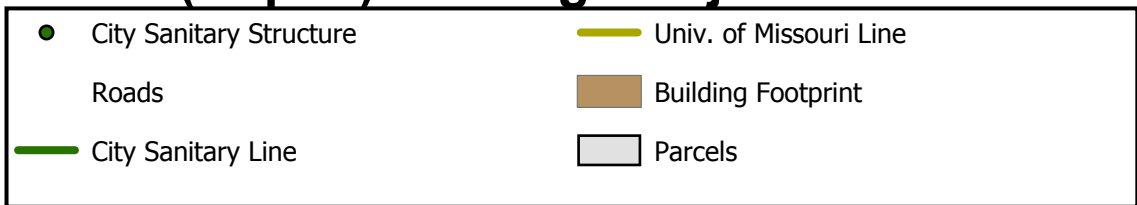
Parcel Data Source: Boone County Assessor

2015 Imagery: Boone County Assessor's Office

Hillshade Data: Boone County GIS Office



#18-122: Central Missouri Islamic Subdivision Plat 1 (Replat) & Design Adjustments



Created by The City of Columbia - Community Development Department

Parcel Data Source: Boone County Assessor

2015 Imagery: Boone County Assessor's Office

Hillshade Data: Boone County GIS Office