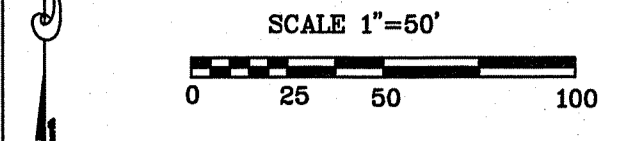
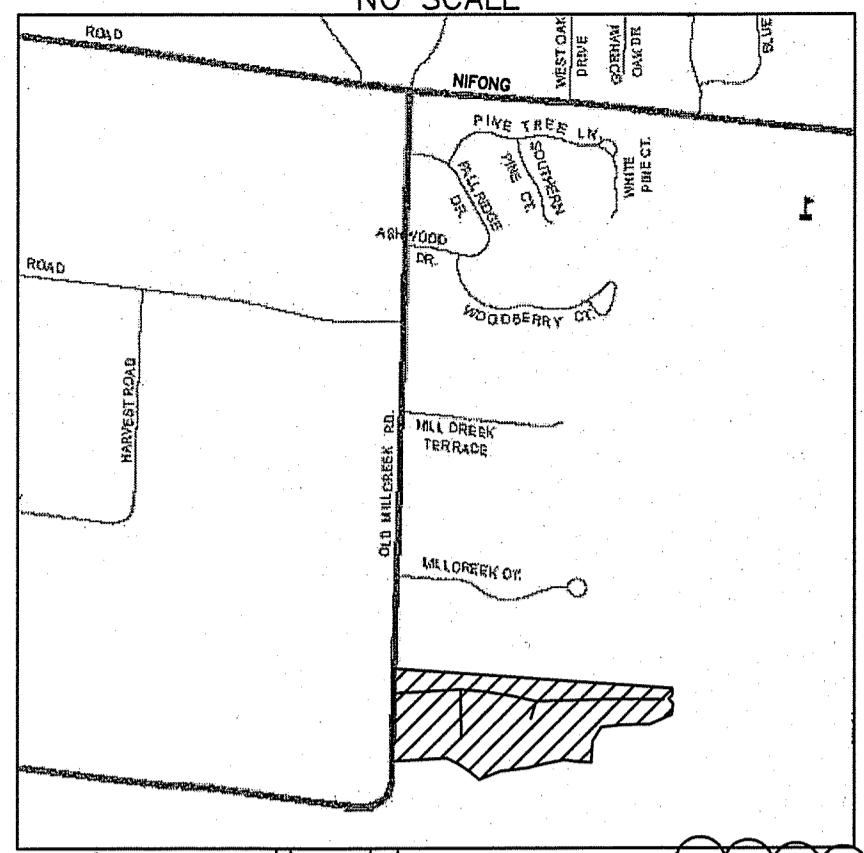


LAND ANALYSIS MAP

SITE LOCATION MAP
NO SCALE



REFERENCE BEARING: GRID NORTH AS PER GPS OBSERVATION

NOTES

DESCRIPTION:
A TRACT LOCATED IN THE SOUTHWEST QUARTER OF SECTION 34, TOWNSHIP 48 NORTH, RANGE 13 WEST, CITY OF COLUMBIA, BOONE COUNTY, MISSOURI, AND BEING THE TRACT DESCRIBED BY THE DEED IN BOOK 3227 PAGE 5 AND THE TRACT DESCRIBED BY THE DEED IN BOOK 3227 PAGE 6 BOTH OF THE BOONE COUNTY RECORDS AND CONTAINING 15.63 ACRES.

OWNER/DEVELOPER
ELIAS AND ELIAS LLC
2101 WEST BROADWAY
COLUMBIA, MO 65203

THIS TRACT DOES NOT CONTAIN ANY SENSITIVE AREAS AS DEFINED BY THE FUTURE LAND USE MAP OF THE CITY'S COMPREHENSIVE PLAN

BRUSH AND ASSOCIATES, INC.
CONSULTING ENGINEERS AND LAND SURVEYORS
506 NICHOLS STREET, SUITE A
COLUMBIA, MISSOURI 65201
PHONE: (573) 442-3110 FAX: (573) 442-4851
www.brushsurvey.com
LSC 321 ENC 001450

J. DANIEL BRUSH EN 28665
DATE:

MILL CREEK MEADOWS SUBDIVISION PLAT

Drawn: JOB NUMBER
8293

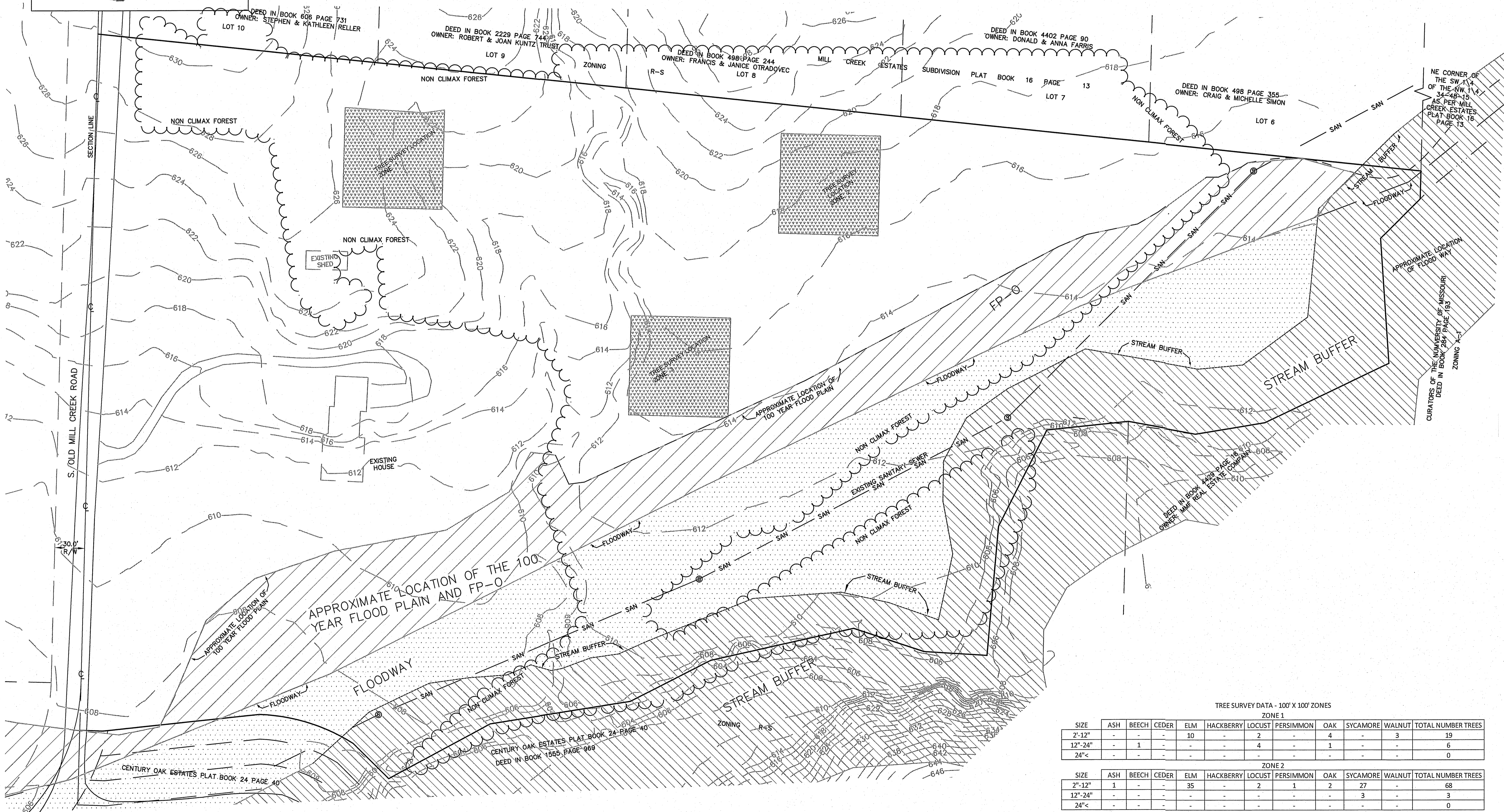
Checked: CAD File Name (Number):

Drawing Title:

No. Revisions: Date:

Submission Date: Drawing Number:

Plot Date:
4/12/17



TREE SURVEY DATA - 100' X 100' ZONES

SIZE	ZONE 1										
	ASH	BEECH	CEDER	ELM	HACKBERRY	LOCUST	PERSIMMON	OAK	SYCAMORE	WALNUT	TOTAL NUMBER TREES
2"-12"	-	-	-	10	-	2	-	4	-	3	19
12"-24"	-	1	-	-	-	4	-	1	-	-	6
24"<	-	-	-	-	-	-	-	-	-	-	0

SIZE	ZONE 2										
	ASH	BEECH	CEDER	ELM	HACKBERRY	LOCUST	PERSIMMON	OAK	SYCAMORE	WALNUT	TOTAL NUMBER TREES
2"-12"	1	-	-	35	-	2	1	2	27	-	68
12"-24"	-	-	-	-	-	-	-	-	3	-	3
24"<	-	-	-	-	-	-	-	-	-	-	0

SIZE	ZONE 3										
	ASH	BEECH	CEDER	ELM	HACKBERRY	LOCUST	PERSIMMON	OAK	SYCAMORE	WALNUT	TOTAL NUMBER TREES
2"-12"	2	-	1	2	2	10	-	13	17	-	47
12"-24"	-	-	-	-	-	-	-	1	1	-	2
24"<	-	-	-	-	-	-	-	-	-	-	0

PERCENTAGE OF TREE TYPE											
% OF TOTAL	2.1%	0.7%	0.7%	32.4%	1.4%	12.4%	0.7%	14.5%	33.1%	2.1%	145