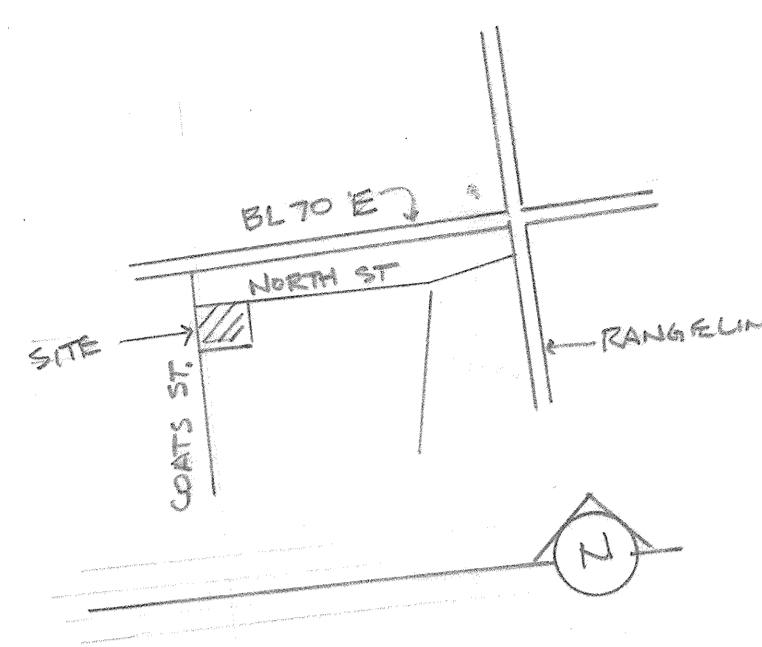
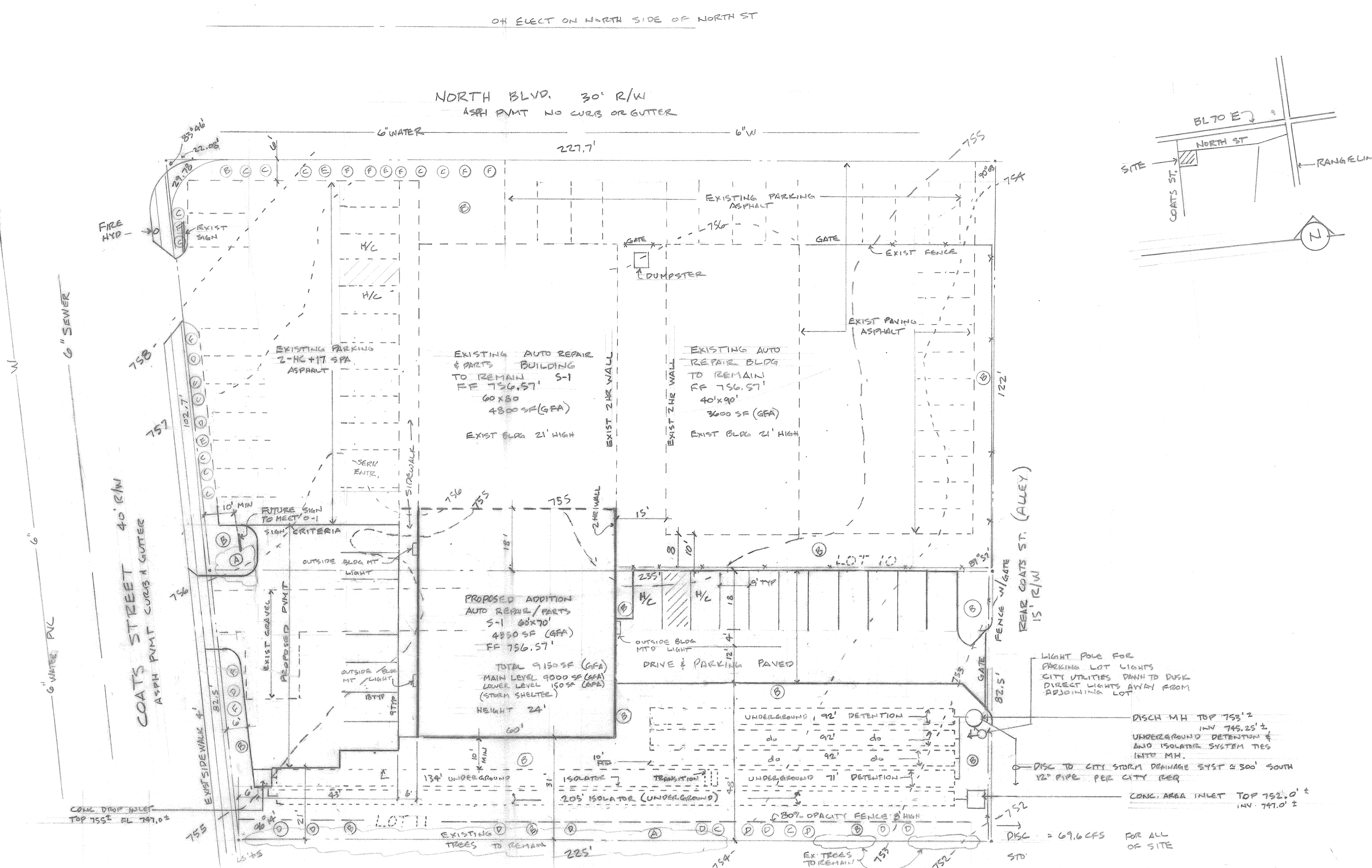


REVISIONS	BY

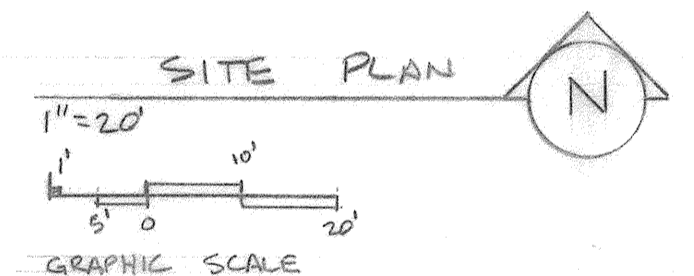
RICHARD L. BOCK, P.E.
 5000 MENLO GAVEL RD.
 COLUMBIA, MO 65202-1999
 PHONE 573-981-9985
 FAX 573-981-9986
 E-MAIL BOCKELAS@AOL.COM

KARDON C-P PLAN - REVISED 2010
 COATS & NORTH STREET

Date	6-8-11
Scale	NOTED
Drawn	RLB
Job	
Sheet	1
Of 1	Sheets



NOTE: SITE NOT IN 100YR FLOOD PLAIN



BUILDING NOTES
 ZONING C-P
 USE GROUP S-1 MODERATE HEAVY GROSS SF 4550
 MAX ALLOWABLE SF 9,150 SF 9000 SF MAIN FLR 150 BSMT
 CONSITE TYPE SB
 BASIC WIND LOAD 90MPH GROUND SNOW LOAD 20 PSF
 SEISMIC CATEGORY B OCCUPANT LOAD 14

CITY BENCH MARK II CHISELED IN CORNER CURB OF
 AUTO BOWE PARKING LOT N.E. CORNER EL 760.20

- LANDSCAPE NOTES (165 LF OF BUFFER STRIP)**
- (A) MAINTAIN EXIST DECIDUOUS TREES
 - (B) TURF GRASS (EXIST OR NEW)
 - (C) EVERGREEN SHRUB YEW BUSH (2 GAL SIZE) (HALLORAN)
 - (D) EVERGREEN UPRIGHT TREE YEW TREE (CAPITATA) (2 GAL SIZE)
 - (E) DECIDUOUS MED. TREE 2" CAL. FLOWERING CRAB APPLE (MALUS SF)
 - (F) DECIDUOUS SHRUB (BURNING BUSH) 2 GAL SIZE (EUONYMUS ALATUS)
 - (G) NOT USED
 - (H) NOT USED

AREA OF SITE	48547 SF	= 1.11 AC		
AREA OPEN SPACE	7282 SF	= 15% 866% LANDSCAPED 634% EXIST VEGETATION		
PARKING SERVICES ONE PER 300 SF	PROP. SOUTH BLDG	WEST BLDG		
STORAGE/SHOP	4200 14 REAR	2700 9 REAR		
SALES FLOOR	1200	3 REAR		
TOTALS	14 REAR + 2 1/2	20 REAR + 2 1/2	9 REAR	47 REAR TOTAL
AMOUNT PER PLANS	14 + 2 1/2	20 + 2 1/2	TOT = 18	57 AMT PER PLANS

KARDON C-P PLAN - REVISED 2011 FOR: LOTS 10 & 11 J.C. CONLEY'S ADDITION
 SCALE 1"=20'

OWNERS: TOM & PAM KARDON
 4103 HARTFIELD DR
 COLUMBIA, MO 65203

ACCEPTED BY THE CITY COUNCIL THIS 18th DAY OF July, 2011

Robert McDaniel MAYOR
Shelanna CITY CLERK

APPROVED BY THE CITY OF COLUMBIA, PLANNING AND ZONING COMMISSION

THIS 23rd DAY OF June, 2011

David Brodsky CHAIRMAN

