

Case # 35-2024 - 3705 W. Gibbs Road

Preliminary Plat



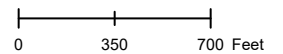
- Columbia City Limit
- City Zoning
- City Property
- Parcels



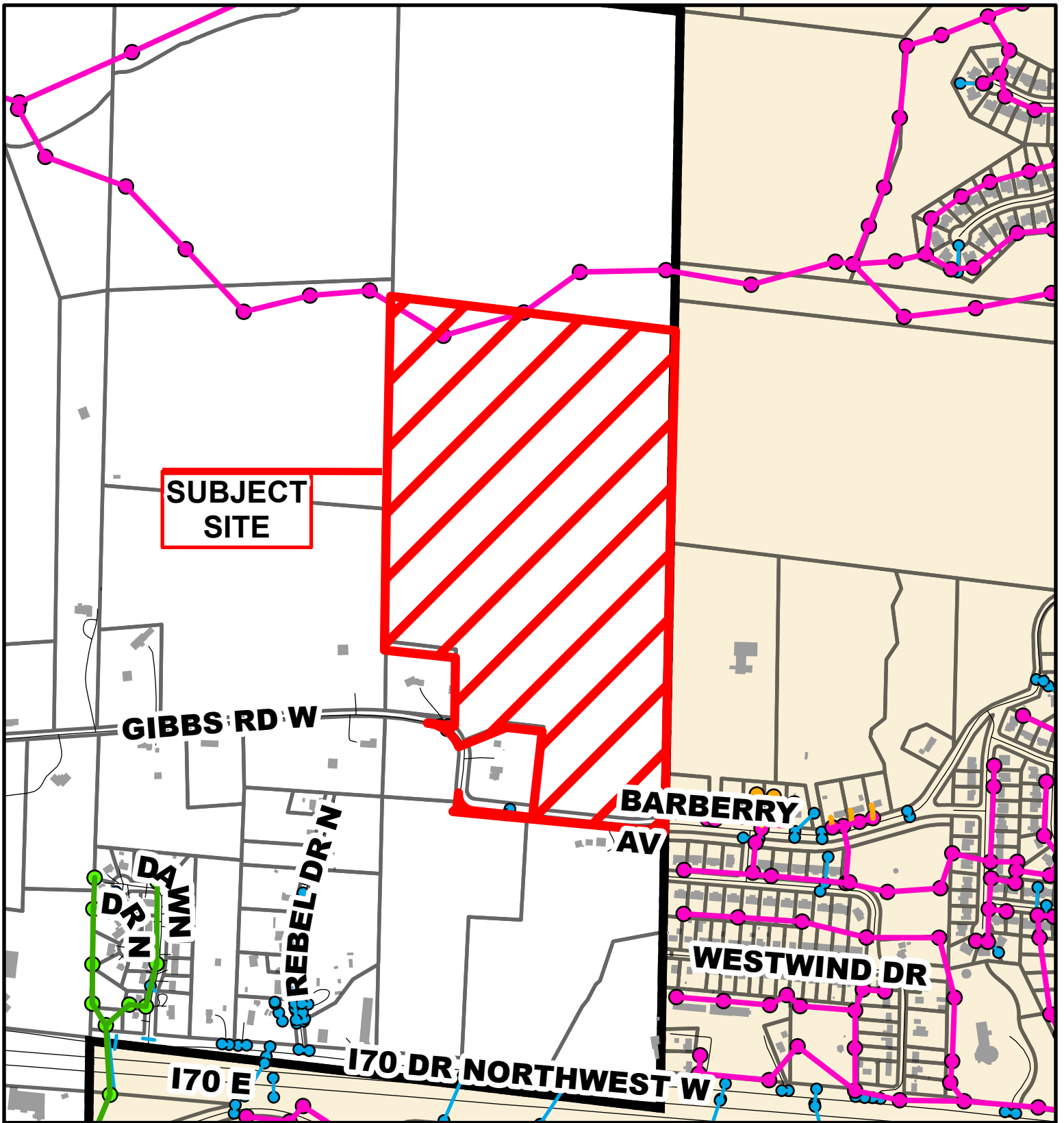
Parcel Data Source: Boone County Assessor

Created by The City of Columbia - Community Development Department

2022 Imagery: NearMap



Source: Nearmap. <https://www.nearmap.com/us/en>

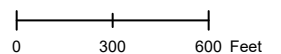


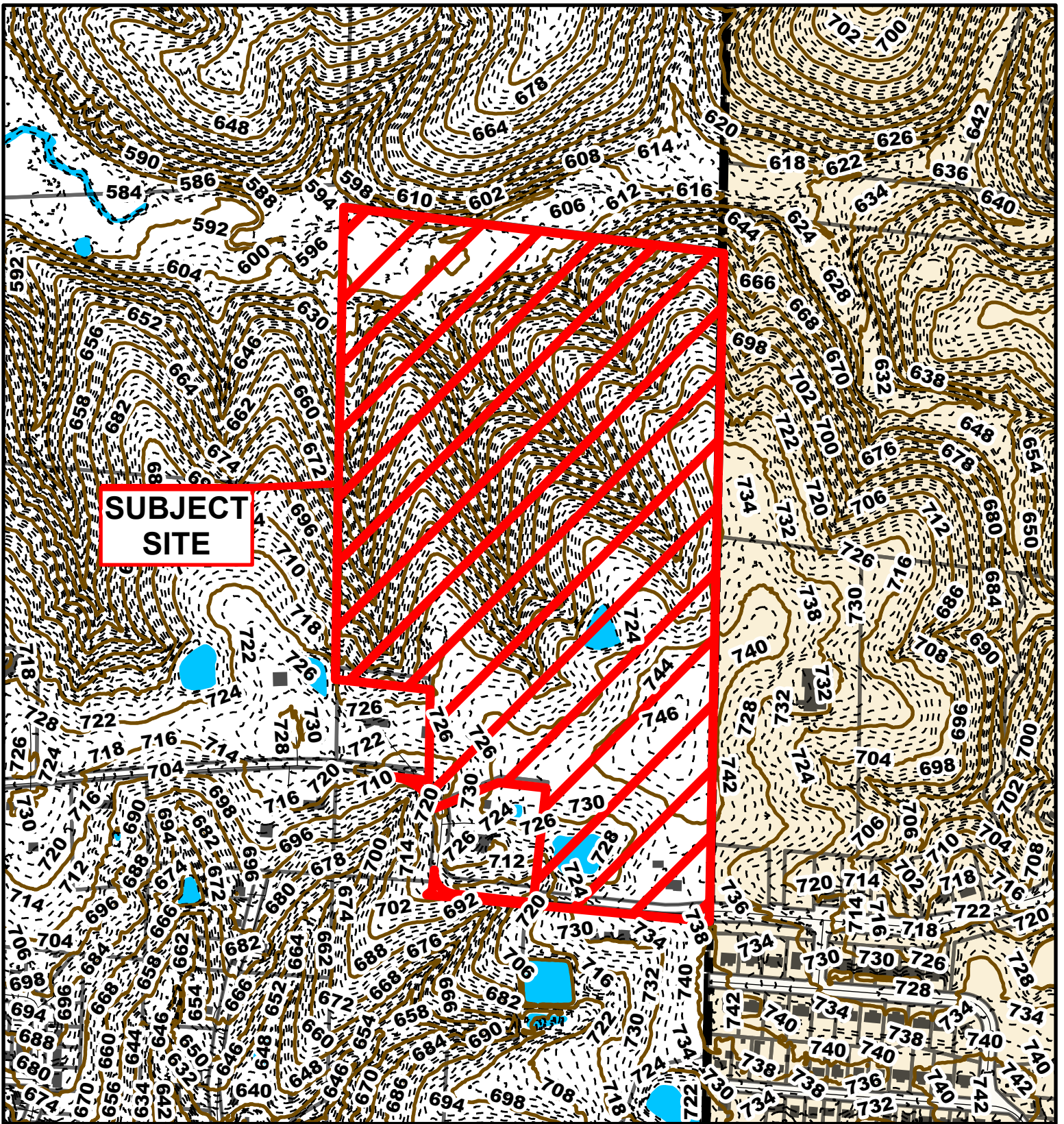
Case # 35-2024 - 3705 W. Gibbs Road

Preliminary Plat



- City Sanitary Line
- City Storm Lines
- BCRSD Sanitary Line
- Parcels
- Private Sanitary Line
- Columbia City Limits





Case # 35-2024 - 3705 W. Gibbs Road

Preliminary Plat



- 10 Foot Contour Lines
- 2 Foot Contour Lines
- City of Columbia
- Parcels

