

#24-2019: Westbury Village Zoning Map Amendment (Rezoning)

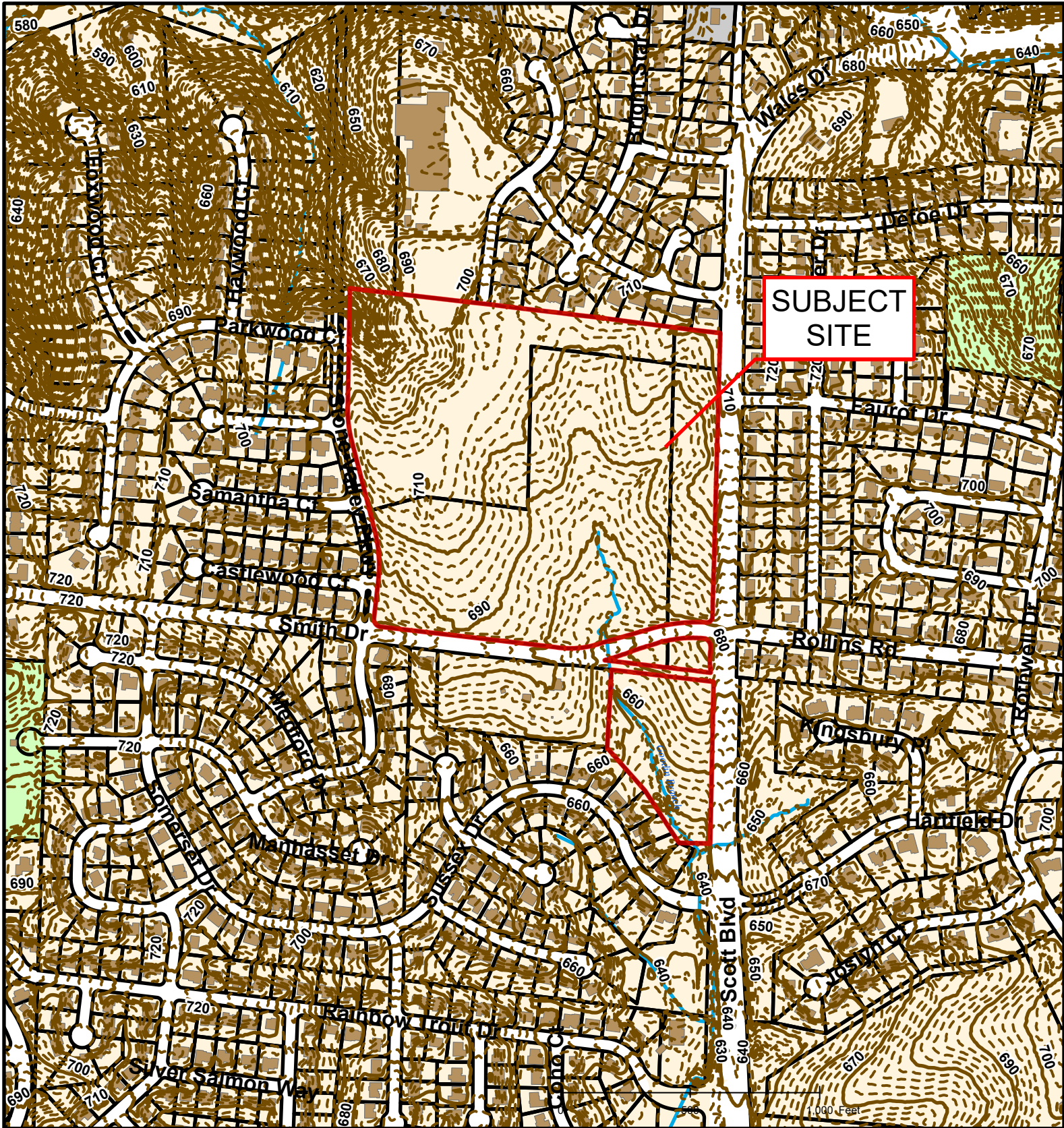


Created by The City of Columbia - Community Development Department

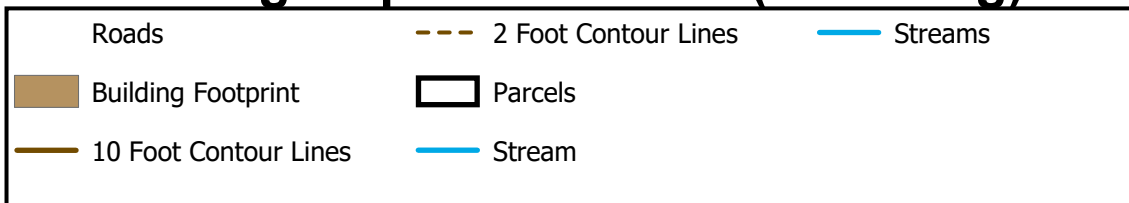
Parcel Data Source: Boone County Assessor

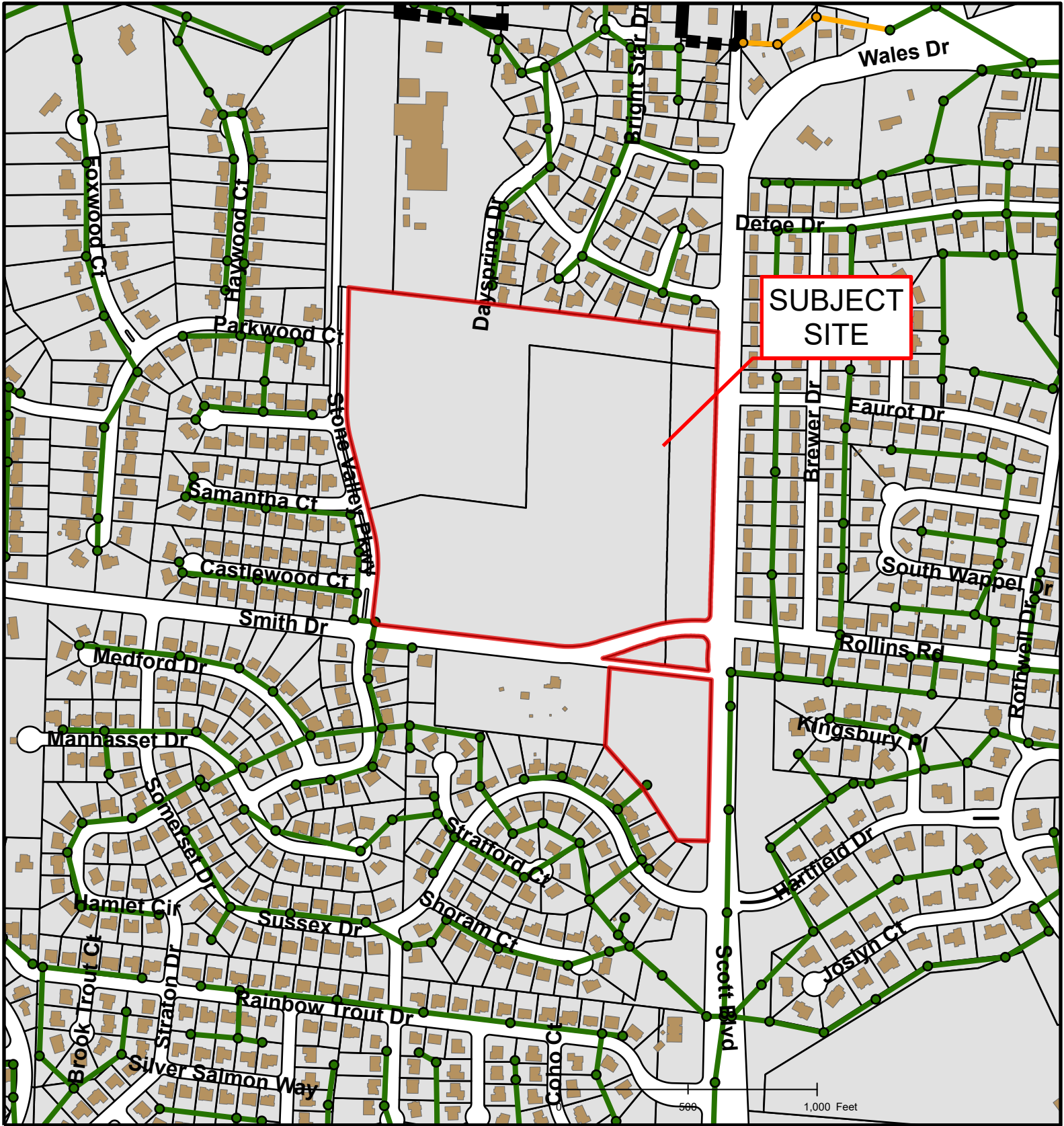
2015 Imagery: Boone County Assessor's Office

Hillshade Data: Boone County GIS Office



#24-2019: Westbury Village Zoning Map Amendment (Rezoning)





#24-2019: Westbury Village Zoning Map Amendment (Rezoning)

| | | |
|----------------------------|-----------------------|--------------------|
| City Sanitary Structure | City Sanitary Line | Building Footprint |
| Private Sanitary Structure | Private Sanitary Line | Parcels |
| Roads | Columbia City Limit | CityViewparcels |



Created by The City of Columbia - Community Development Department

Parcel Data Source: Boone County Assessor

2015 Imagery: Boone County Assessor's Office

Hillshade Data: Boone County GIS Office