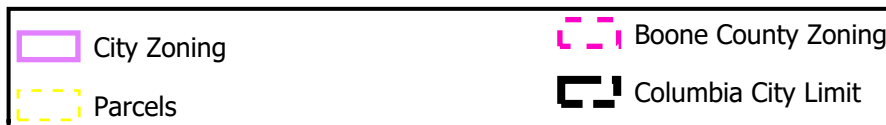


**SUBJECT
SITE**

#134-2019: Copperstone Plat 7C Final Plat

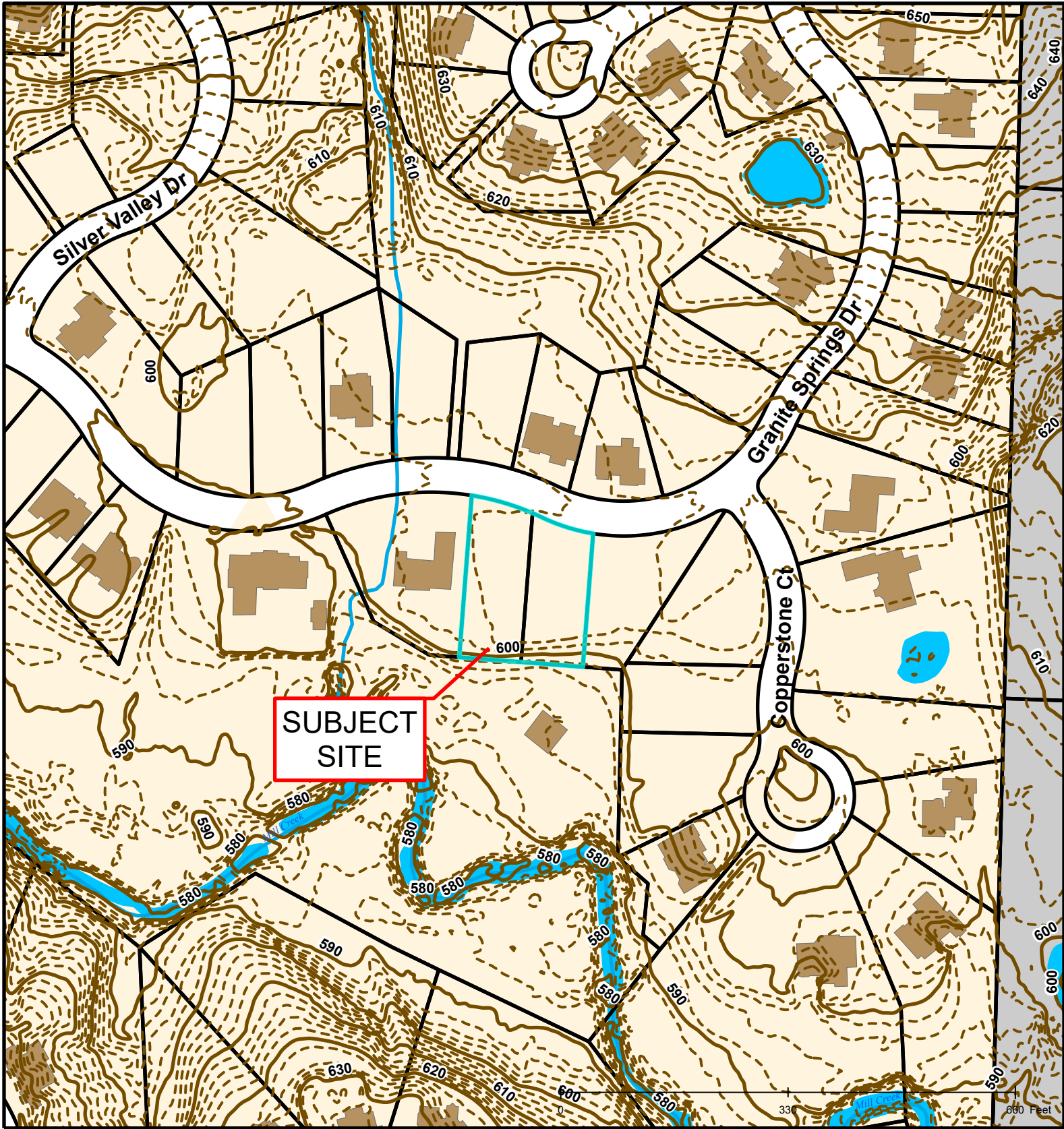


Created by The City of Columbia - Community Development Department

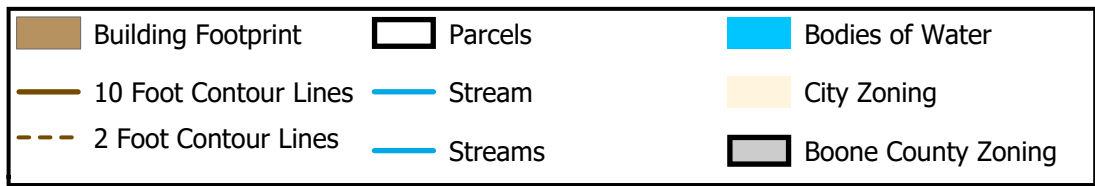
Parcel Data Source: Boone County Assessor

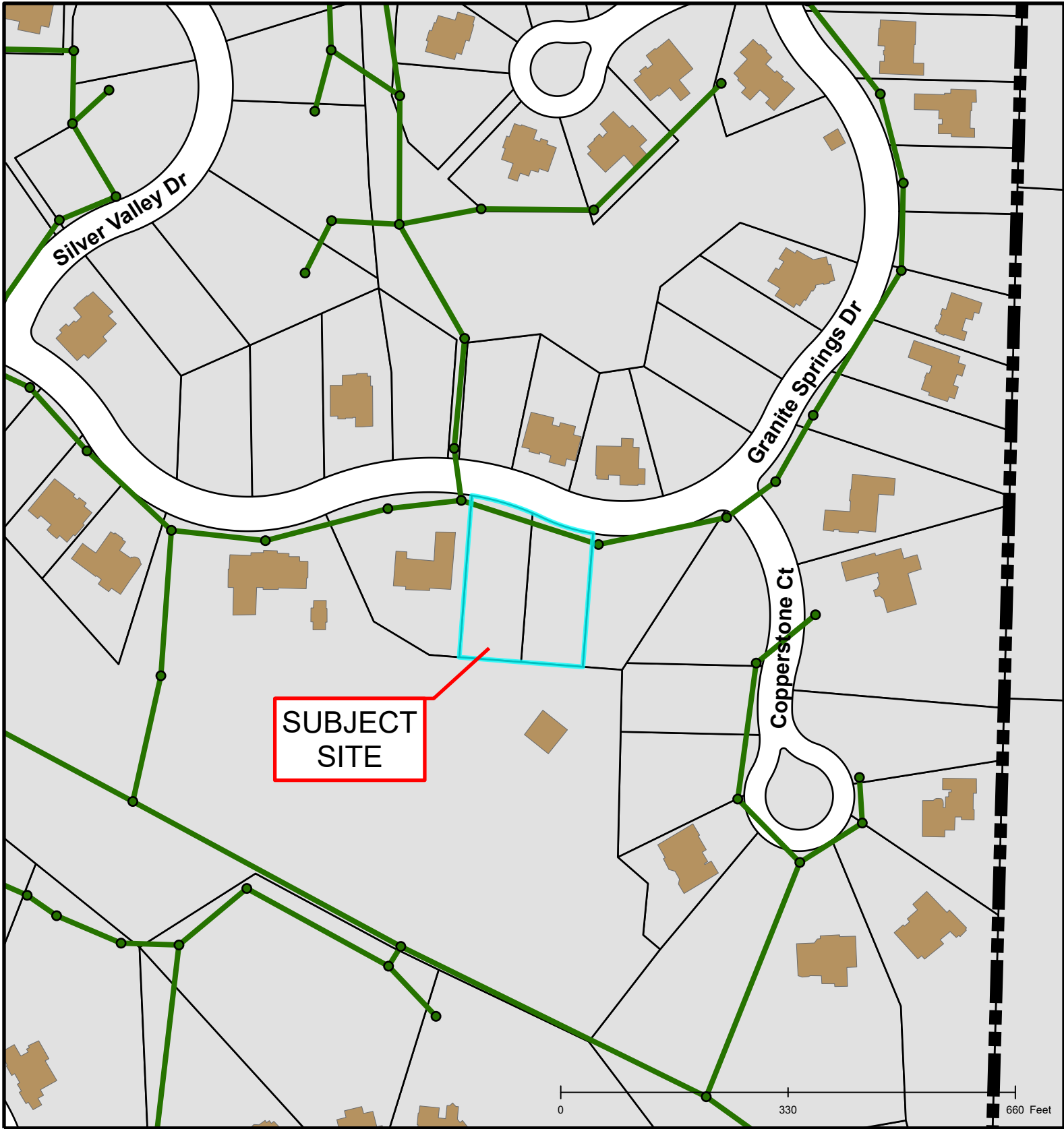
2017 Imagery: Boone County Assessor's Office

Hillshade Data: Boone County GIS

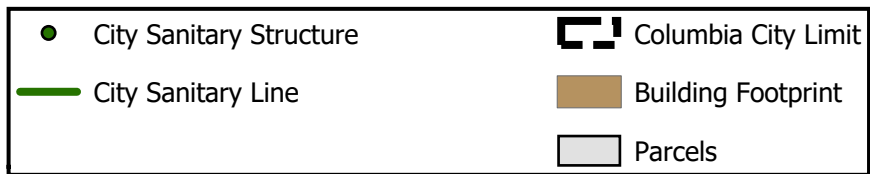


#134-2019: Copperstone Plat 7C Final Plat





#134-2019: Copperstone Plat 7C Final Plat



Created by The City of Columbia - Community Development Department

Parcel Data Source: Boone County Assessor

2017 Imagery: Boone County Assessor's Office

Hillshade Data: Boone County GIS