

EXISTING 15' (STRIP 2)  
SEWER ESMT. RECORDED  
IN BOOK 3007, PAGE 177

SEE DETAIL "A"

RECORDED  
PAGE 60

SAN SEWER ESMT.  
PAGE 1907

DRAINAGE ESMT.

AGE

CAC

UTILITY EASEMENT

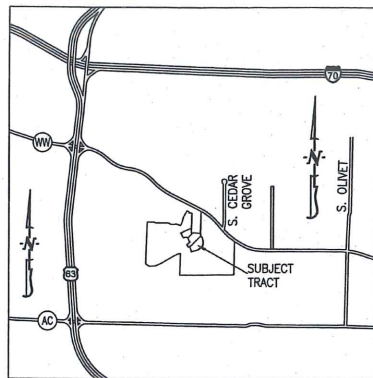


FINAL PLAT  
THE VINEYARDS, PLAT No. 3

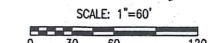
BOONE COUNTY MO DEC 07 2016

A MAJOR SUBDIVISION LOCATED IN THE WEST 1/2 OF SECTION 22, & THE  
EAST 1/2 OF SECTION 21, TOWNSHIP 48 NORTH, RANGE 12 WEST  
COLUMBIA, BOONE COUNTY, MISSOURI  
MAY 16, 2016  
CASE #16-128

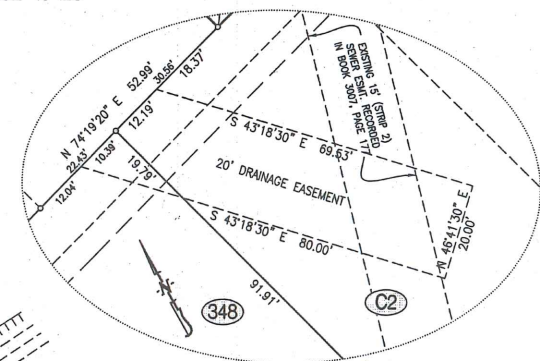
FILED FOR RECORD IN BOONE COUNTY, MISSOURI  
NORA DIETZEL, RECORDER OF DEEDS



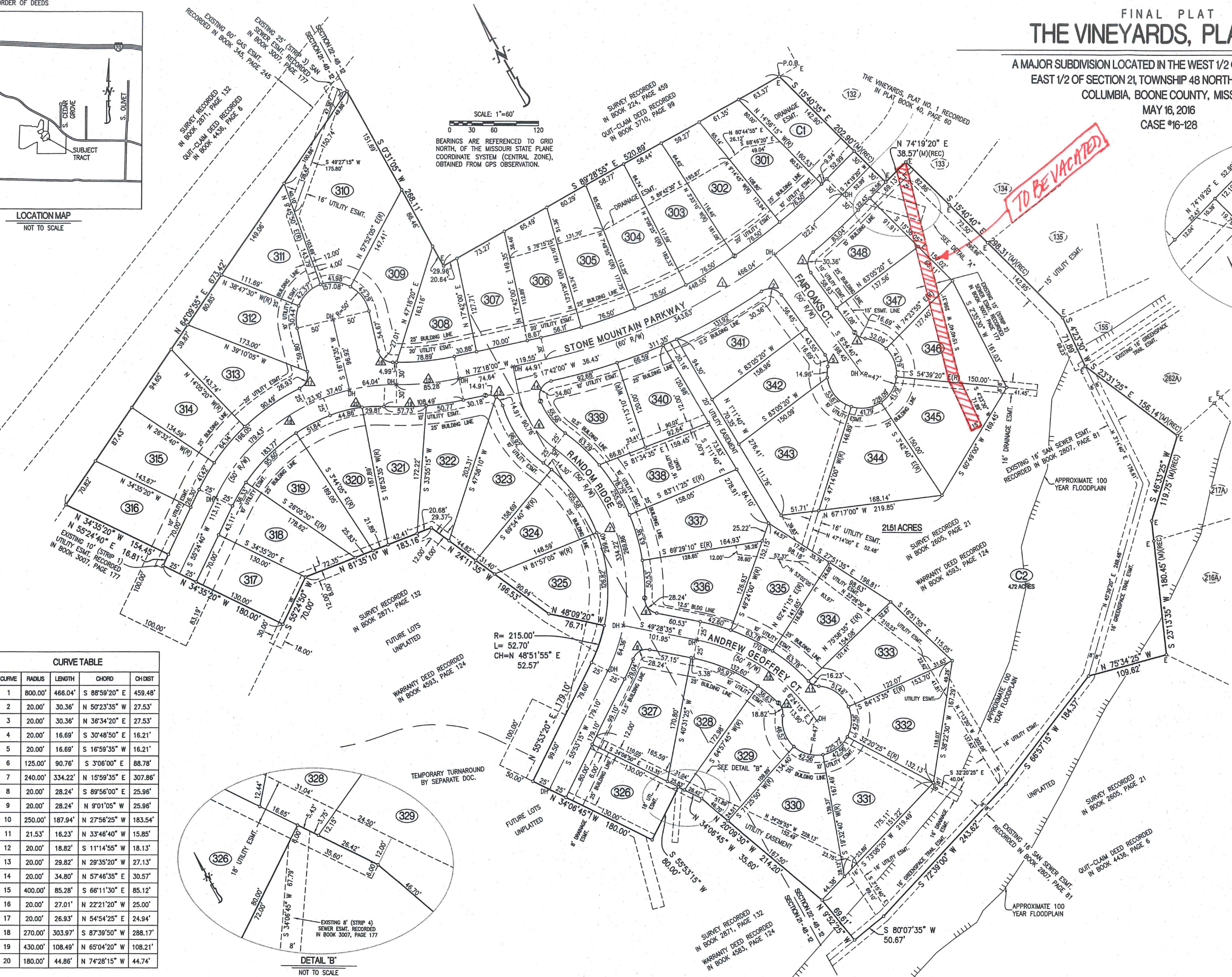
LOCATION MAP  
NOT TO SCALE



BEARINGS ARE REFERENCED TO GRID  
NORTH, OF THE MISSOURI STATE PLANE  
COORDINATE SYSTEM (CENTRAL ZONE),  
OBTAINED FROM GPS OBSERVATION.



DETAIL 'A'  
NOT TO SCALE

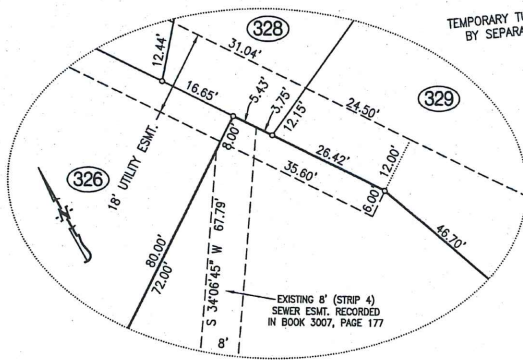


**TO BE VACATED**

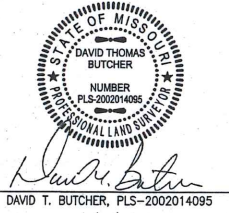
- LEGEND:**
- E EXISTING
  - S SET
  - 1/2" IRON PIPE  
(UNLESS NOTED OTHERWISE)
  - PERMANENT MONUMENT
  - (M) MEASURED DISTANCE
  - (REC) RECORDED DISTANCE
  - (R) RADIAL LINE
  - DH× DRILL HOLE
  - W/ CHISELED X
  - P.O.B. POINT OF BEGINNING

**CURVE TABLE**

CURVE	RADIUS	LENGTH	CHORD	CHDIST
1	800.00'	466.04'	S 88°59'20" E	459.48'
2	20.00'	30.36'	N 50°23'35" W	27.53'
3	20.00'	30.36'	N 36°34'20" E	27.53'
4	20.00'	16.69'	S 30°48'50" E	16.21'
5	20.00'	16.69'	S 16°59'35" W	16.21'
6	125.00'	90.76'	S 3°08'00" E	88.78'
7	240.00'	334.22'	N 15°59'35" E	307.86'
8	20.00'	28.24'	S 89°56'00" E	25.96'
9	20.00'	28.24'	N 9°01'05" W	25.96'
10	250.00'	187.94'	N 27°56'25" W	183.54'
11	21.53'	16.23'	N 33°46'40" W	15.85'
12	20.00'	18.82'	S 11°14'55" W	18.13'
13	20.00'	29.82'	N 29°35'20" W	27.13'
14	20.00'	34.80'	N 57°46'35" E	30.57'
15	400.00'	85.28'	S 66°11'30" E	85.12'
16	20.00'	27.01'	N 22°21'20" W	25.00'
17	20.00'	26.93'	N 54°54'25" E	24.94'
18	270.00'	303.97'	S 87°39'50" W	288.17'
19	430.00'	108.49'	N 65°04'20" W	108.21'
20	180.00'	44.86'	N 74°28'15" W	44.74'



DETAIL 'B'  
NOT TO SCALE



DAVID T. BUTCHER, PLS-2002014095  
DATE 8/5/2016