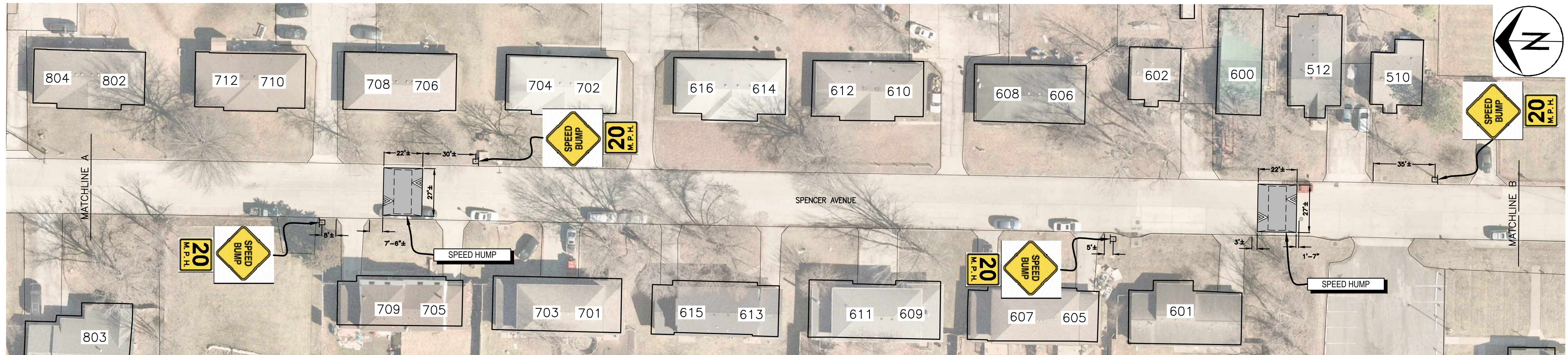
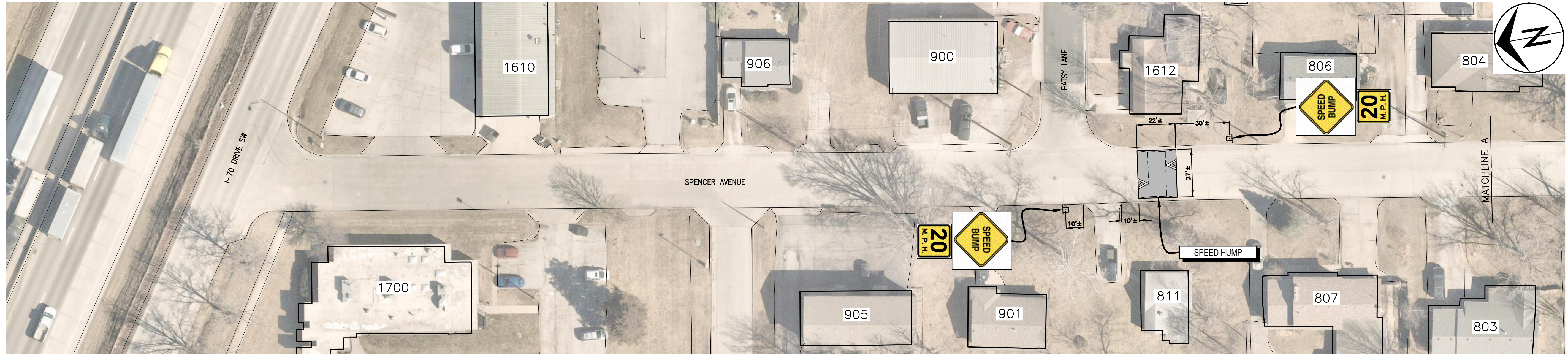


c:\caddres\traffic\calming\spencer_ave_traffic_calming.dwg

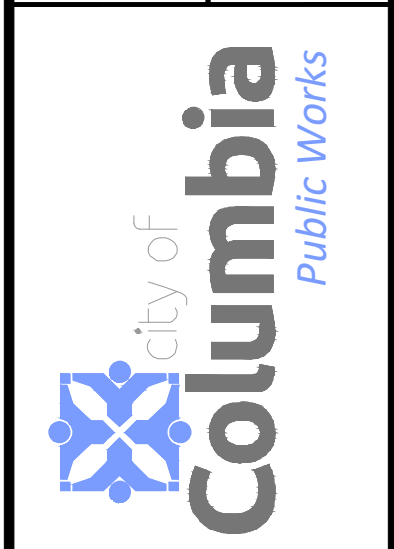


No.	Date	By	Revision

SPENCER AVENUE TRAFFIC CALMING PLAN

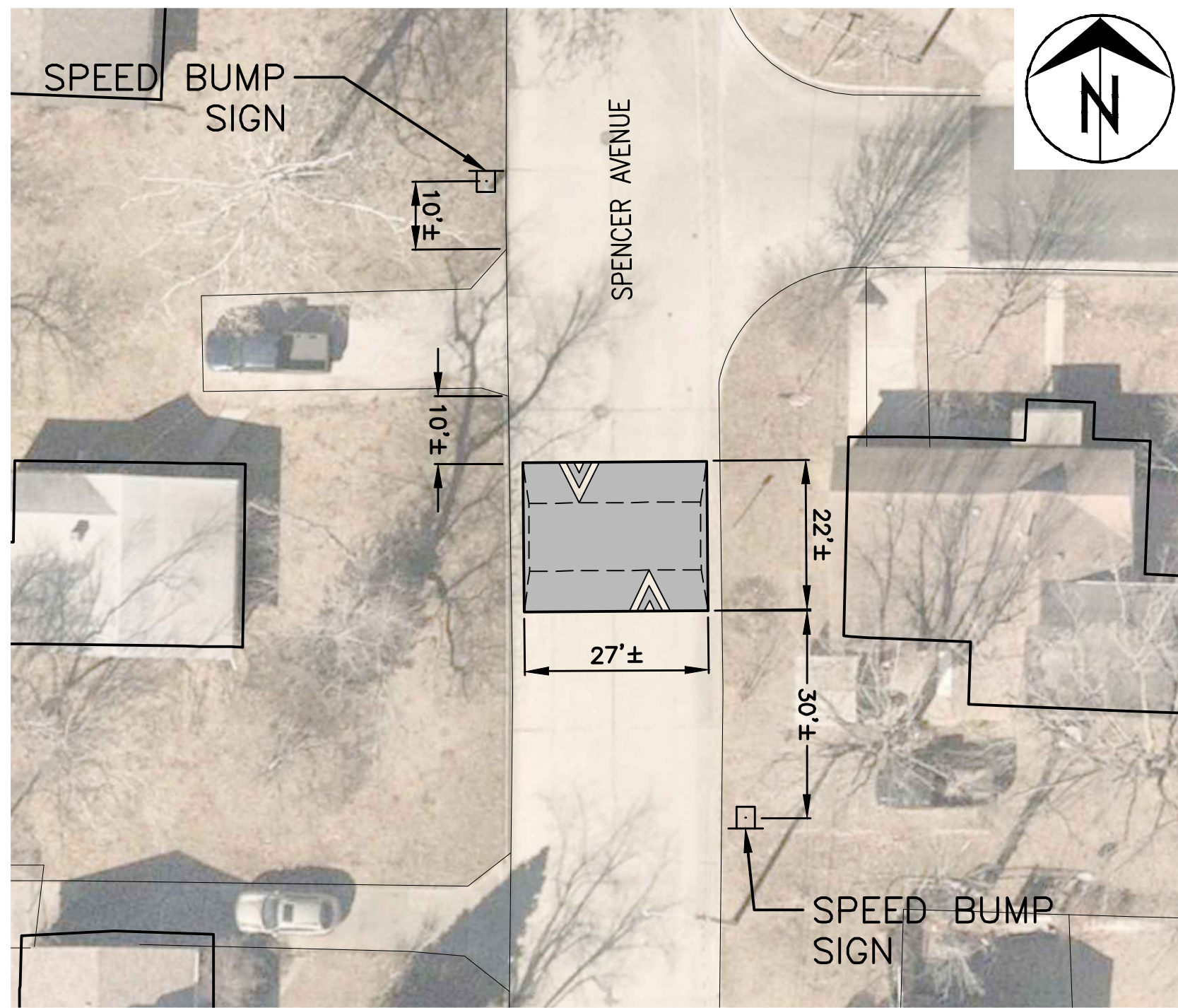
Mission
Provide safe, sustainable infrastructure that promotes positive communities.

701 East Broadway
P.O. Box 6015
Columbia, MO 65205
(573) 875-2489

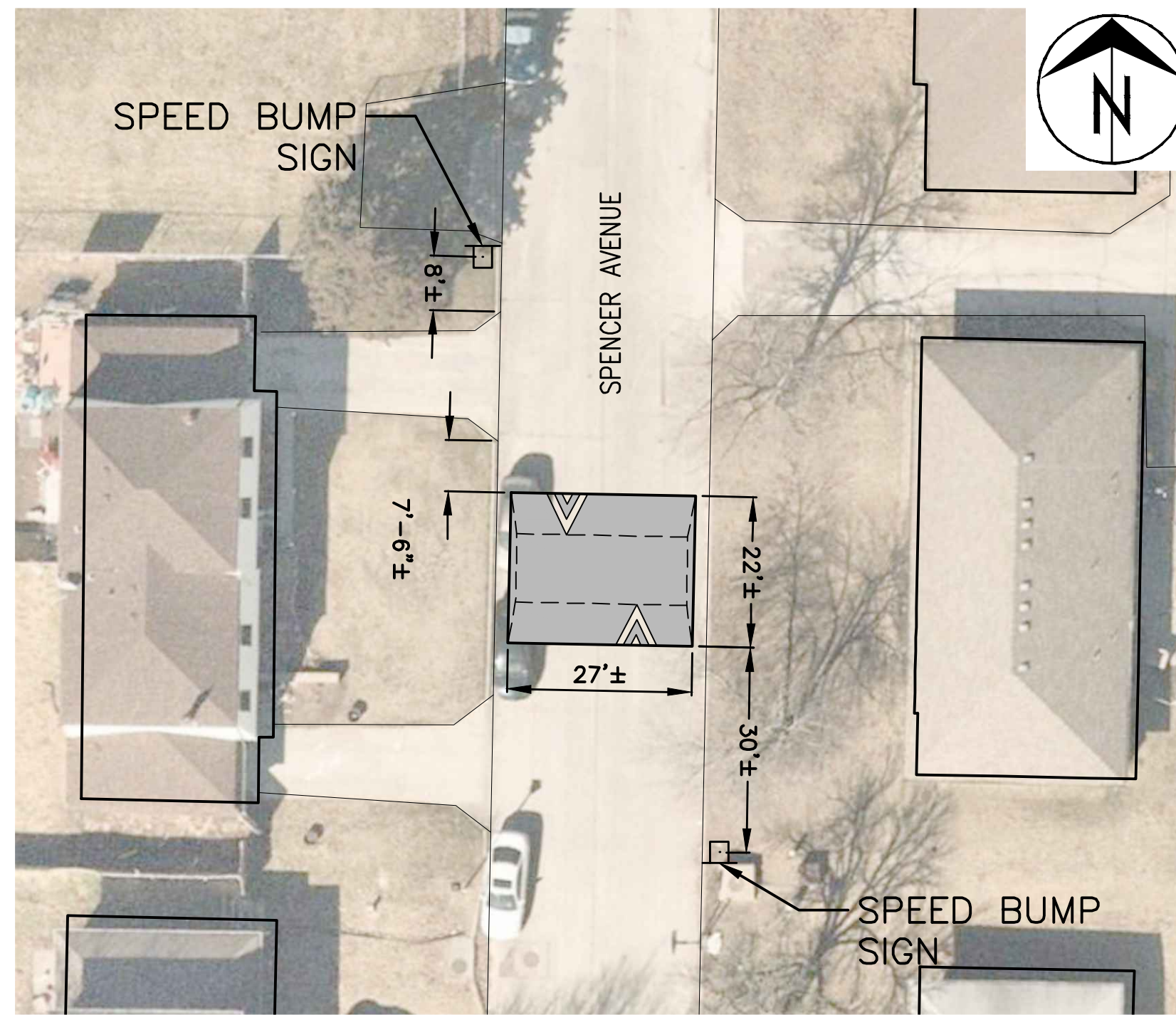


Shane Steven Crech
Registered Professional Engineer
PE-2007011061

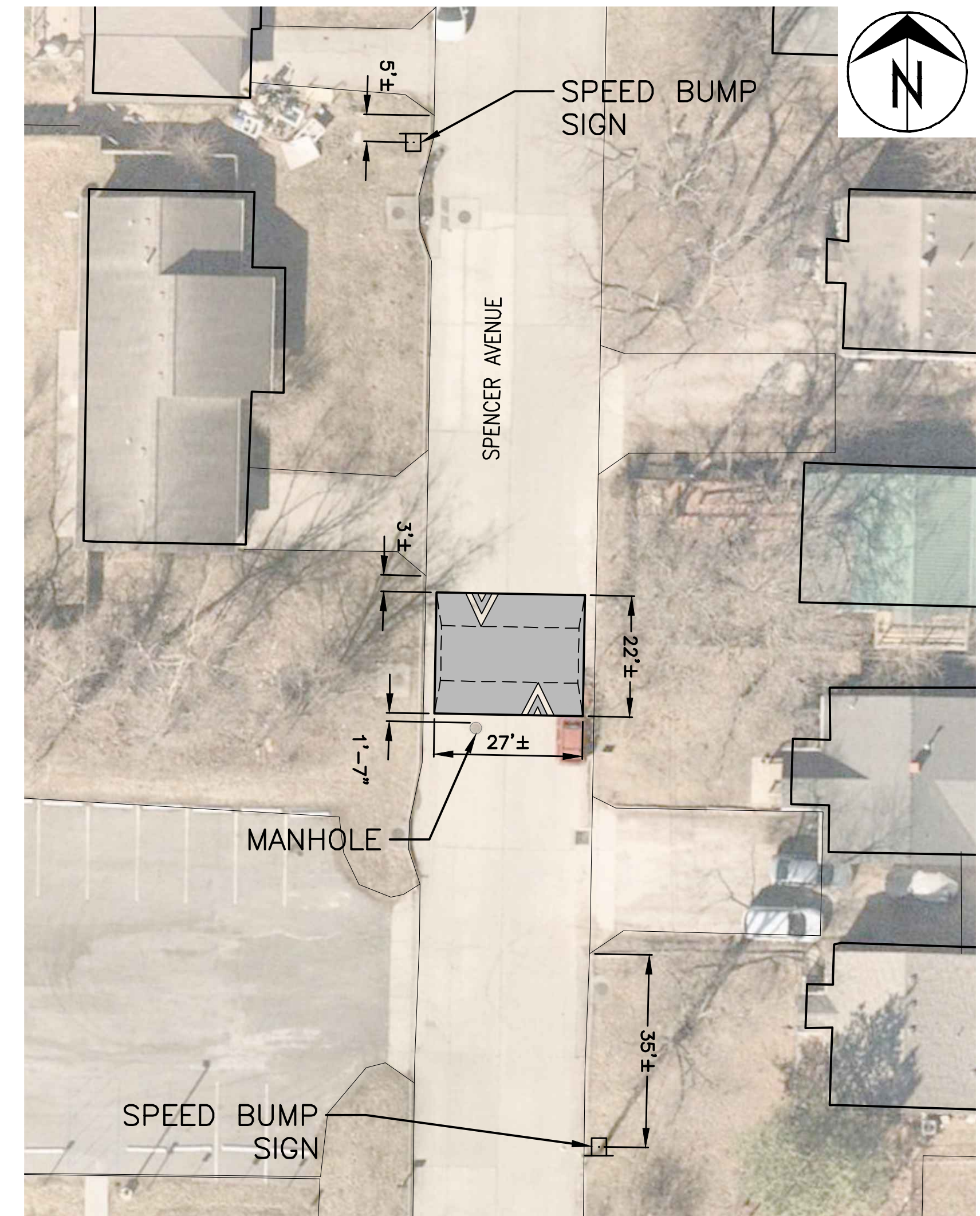
File No.	
Scale:	1"=30'
Date:	1/9/2024
Des.	A.S.B.
Dwn.	S.A.W.
Chk.	J.D.R.



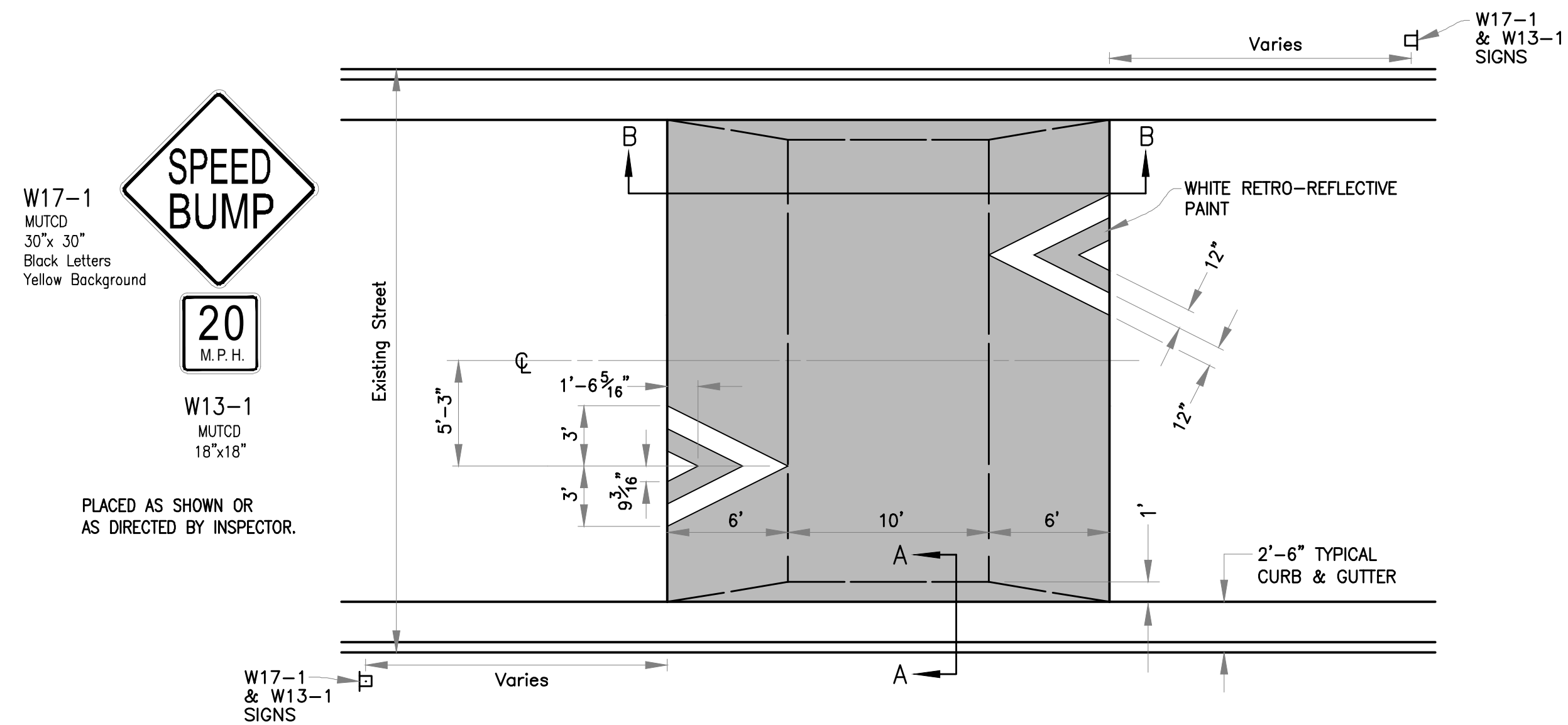
811 SPENCER AVENUE
1" = 20'



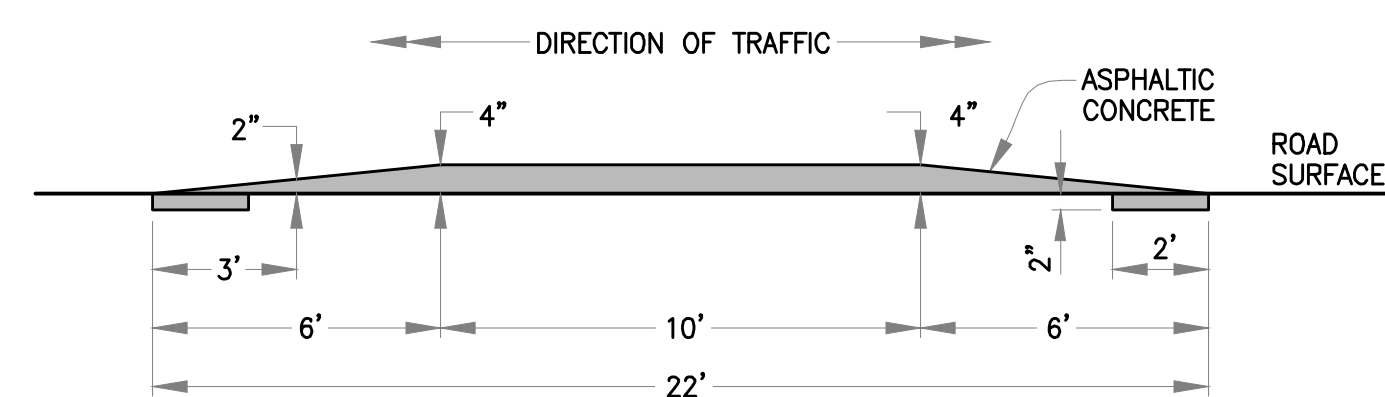
708 SPENCER AVENUE
1" = 20'



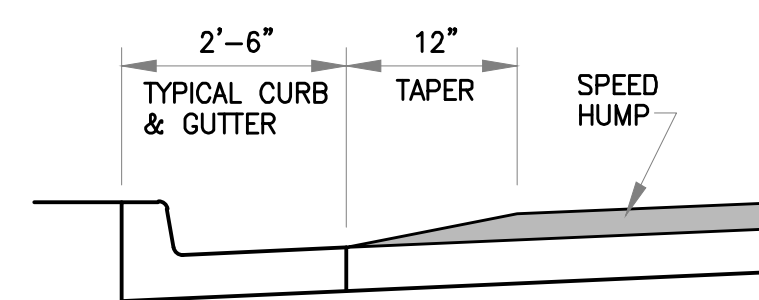
512 SPENCER AVENUE
1" = 20'



PLAN
NOT TO SCALE



SECTION B-B
NOT TO SCALE



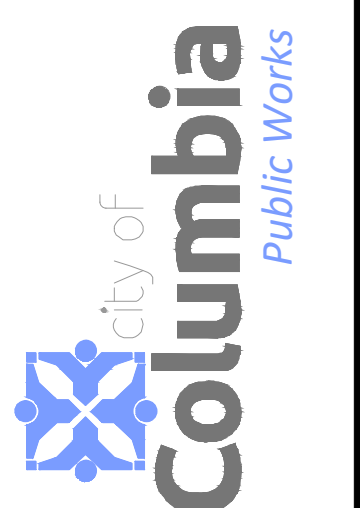
SECTION A-A
NOT TO SCALE

SPEED HUMP
NOT TO SCALE

Revision	By	Date	No.

SPENCER AVENUE TRAFFIC CALMING
Speed Humps

Mission
Provide safe, sustainable infrastructure that promotes positive communities.
701 East Broadway
P.O. Box 6015
Columbia, MO 65205
(573) 875-2489



Shane Steven Crech
Registered Professional Engineer
PE-2007011061

File No.	
Scale:	As Shown
Date:	1/9/2024
Des.	A.S.B
Dwn.	S.A.W
Chk.	J.D.R.

o:\external\traffic\calming\spencer_ave_traffic_calming.dwg
2015 Orthophoto Source: Boone County Assessor