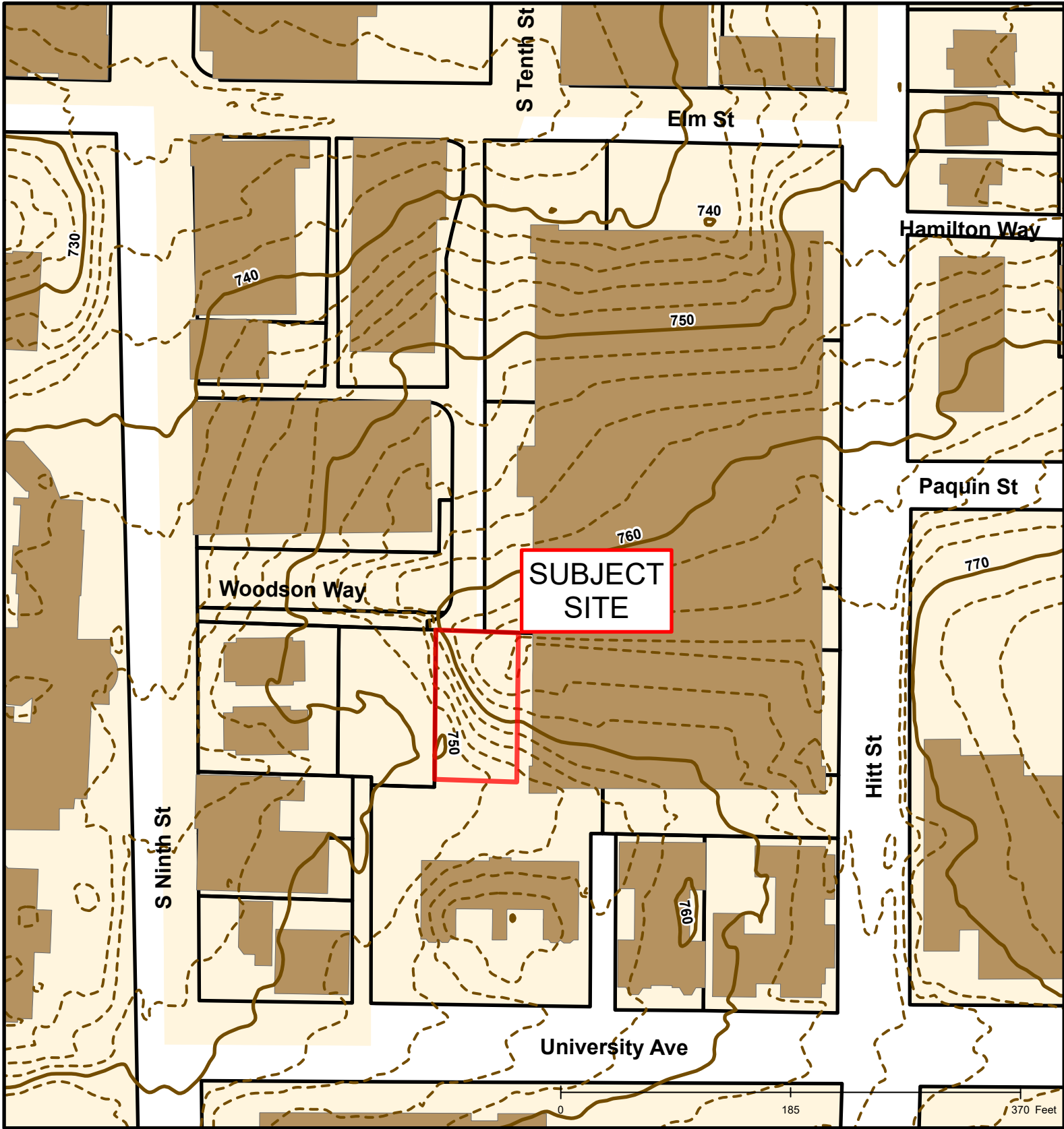


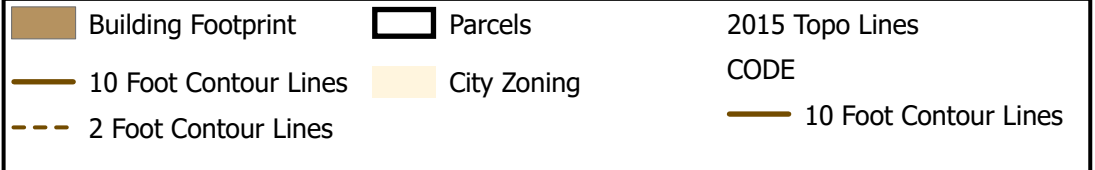
#154-2020: City of Columbia Corrective C-2 Rezoning (909 University Ave)

 City Zoning	 Columbia City Limit
 Parcels	





#154-2020: City of Columbia Corrective C-2 Rezoning (909 University Ave)

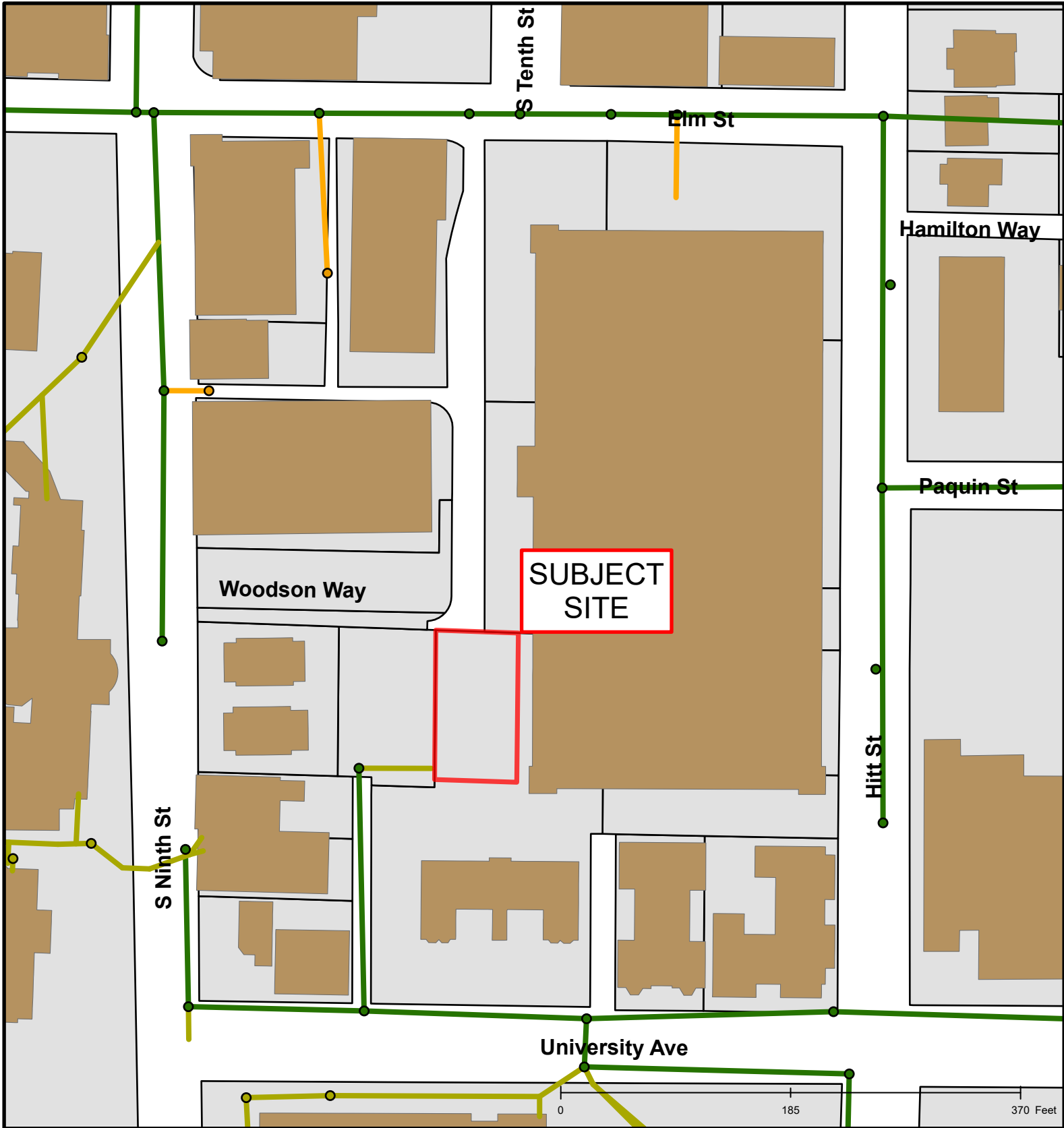


Created by The City of Columbia - Community Development Department

Parcel Data Source: Boone County Assessor

2017 Imagery: Boone County Assessor's Office

Hillshade Data: Boone County GIS



#154-2020: City of Columbia Corrective C-2 Rezoning (909 University Ave)

● City Sanitary Structure	— City Sanitary Line
● Private Sanitary Structure	— Private Sanitary Line
● UMC	— Univ. of Missouri Line

