

No.	Date	By	Revision

**SOUTH GARTH AVENUE  
TRAFFIC CALMING**  
Plan

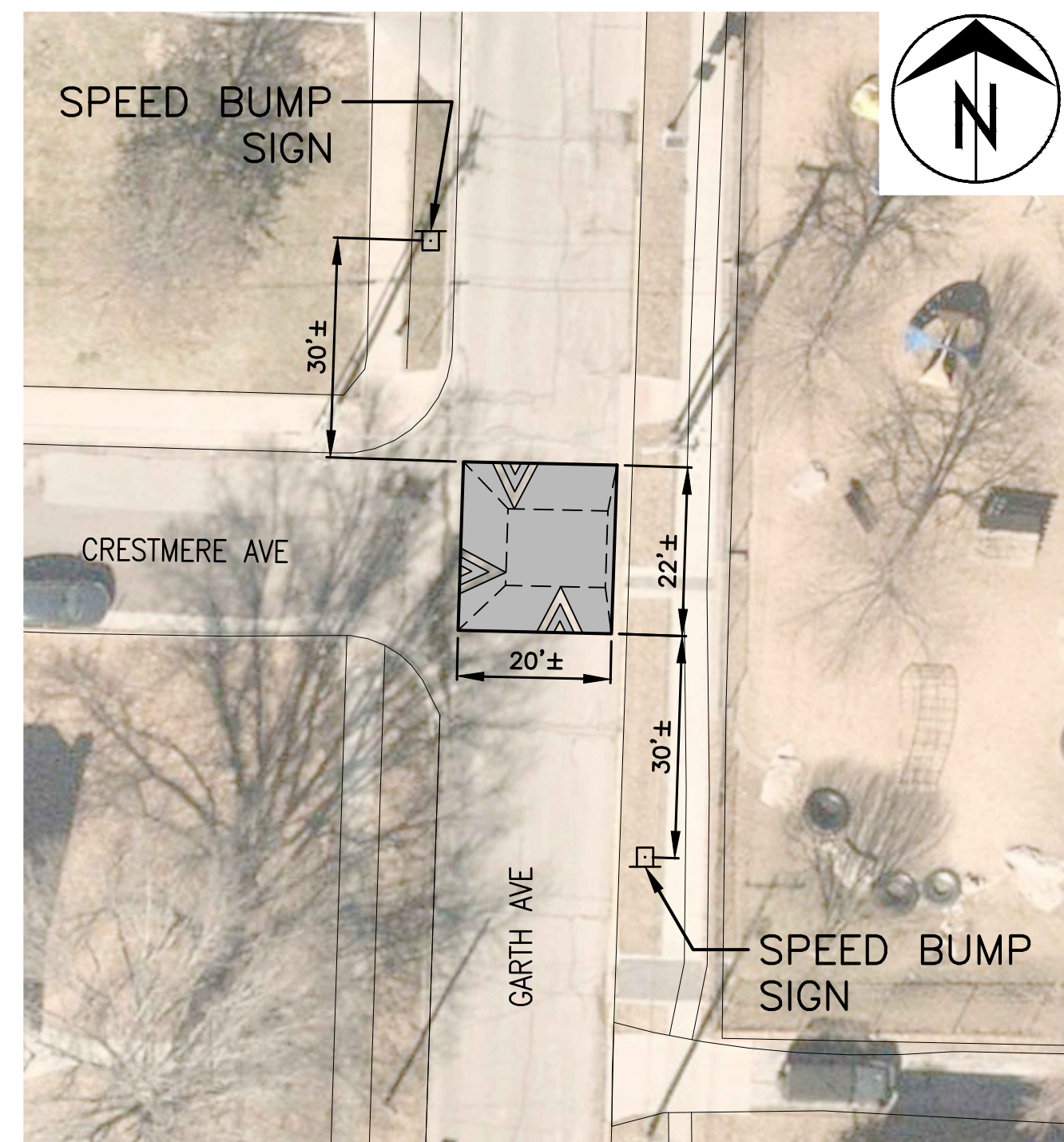
City of Columbia, Missouri  
Department of Public Works

File No.	
Scale:	1" = 30'
Date:	10/19/2022
Des.	A.S.B.
Dwn.	T.M.G.
Chk.	J.D.R.

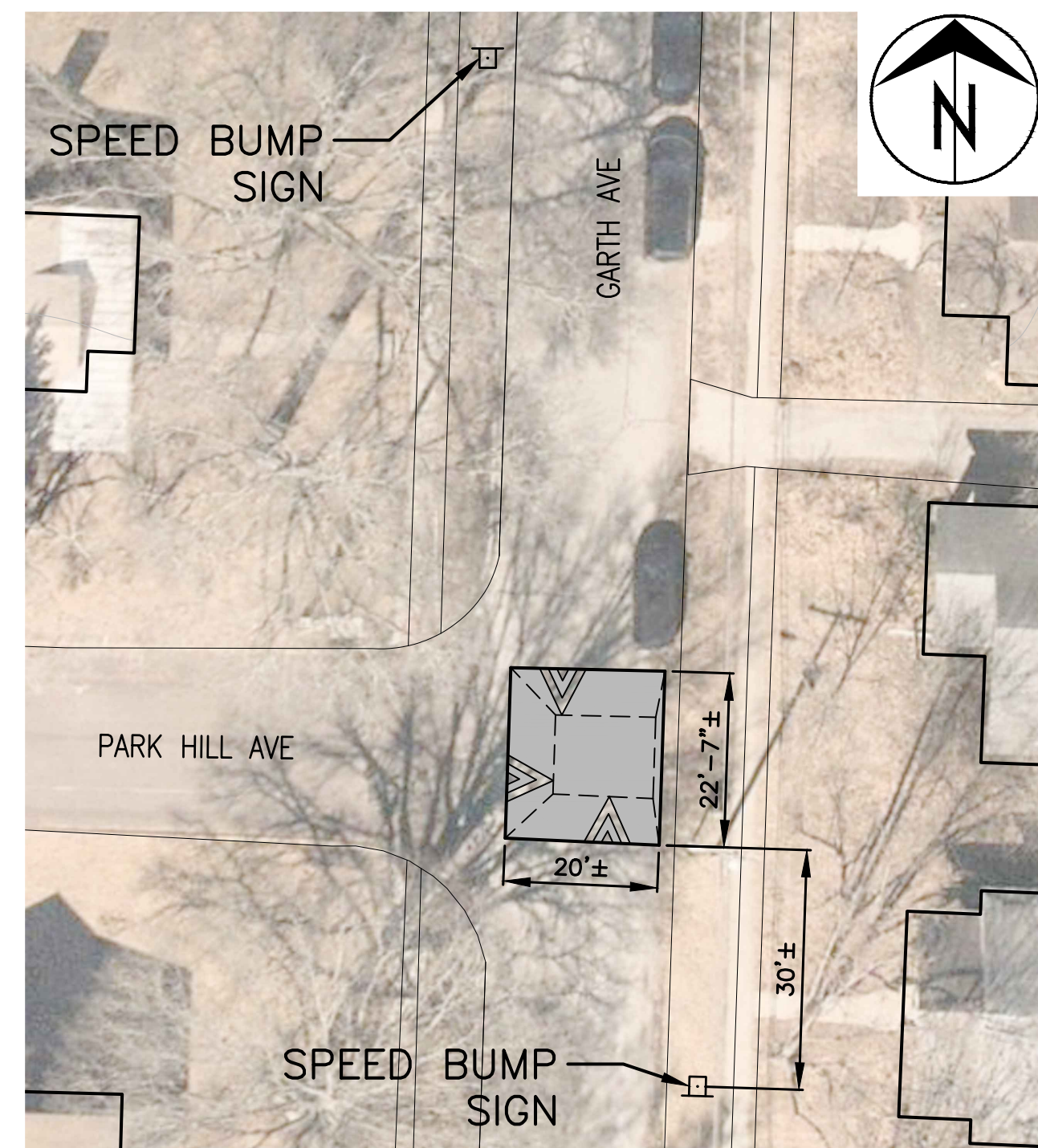
o:\caddpro\traffic\calming\garth\_avenue\garth\_ave\_traffic\_calming.dwg

2011 Orthophoto Source: Boone County Assessor

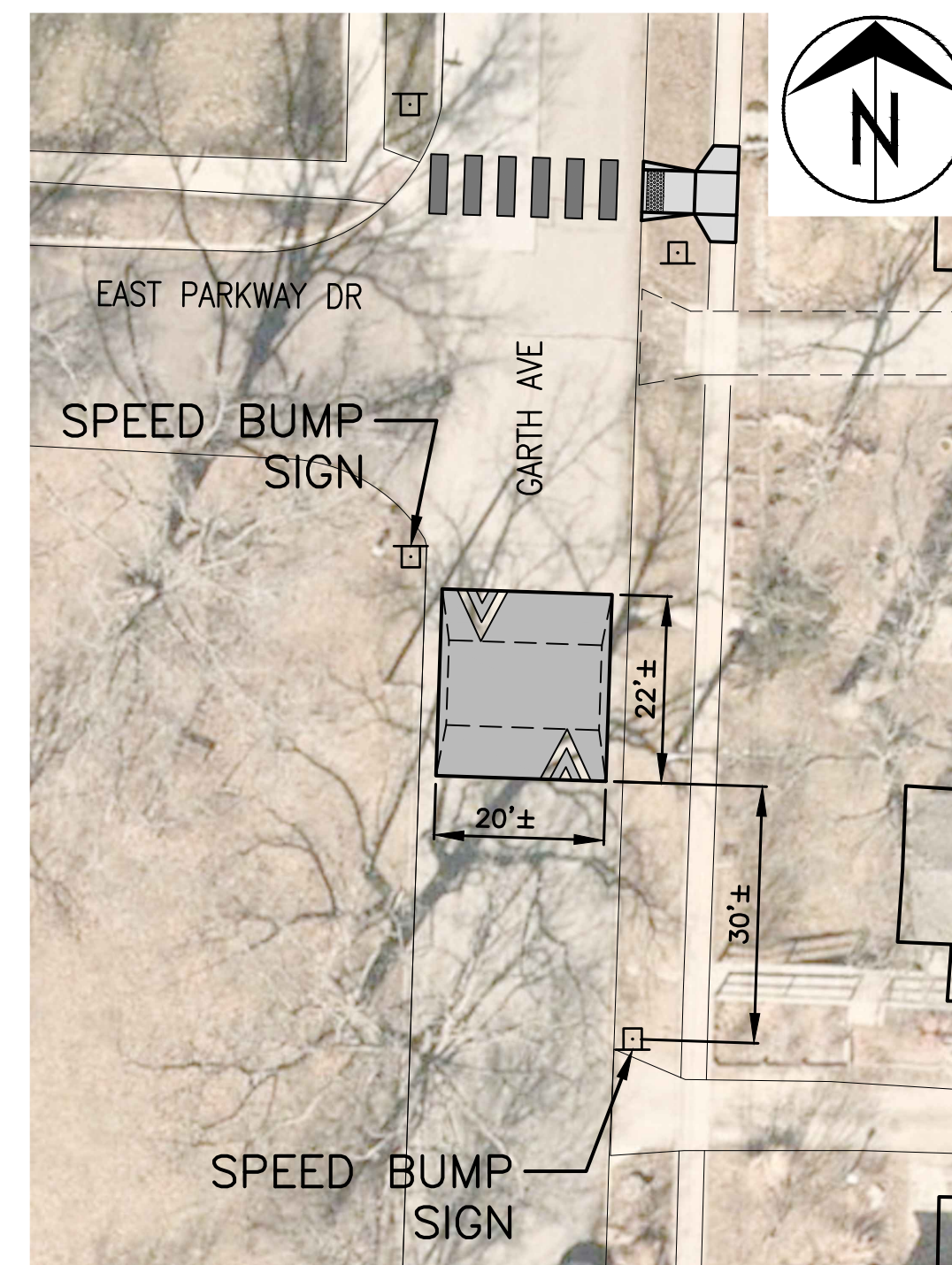




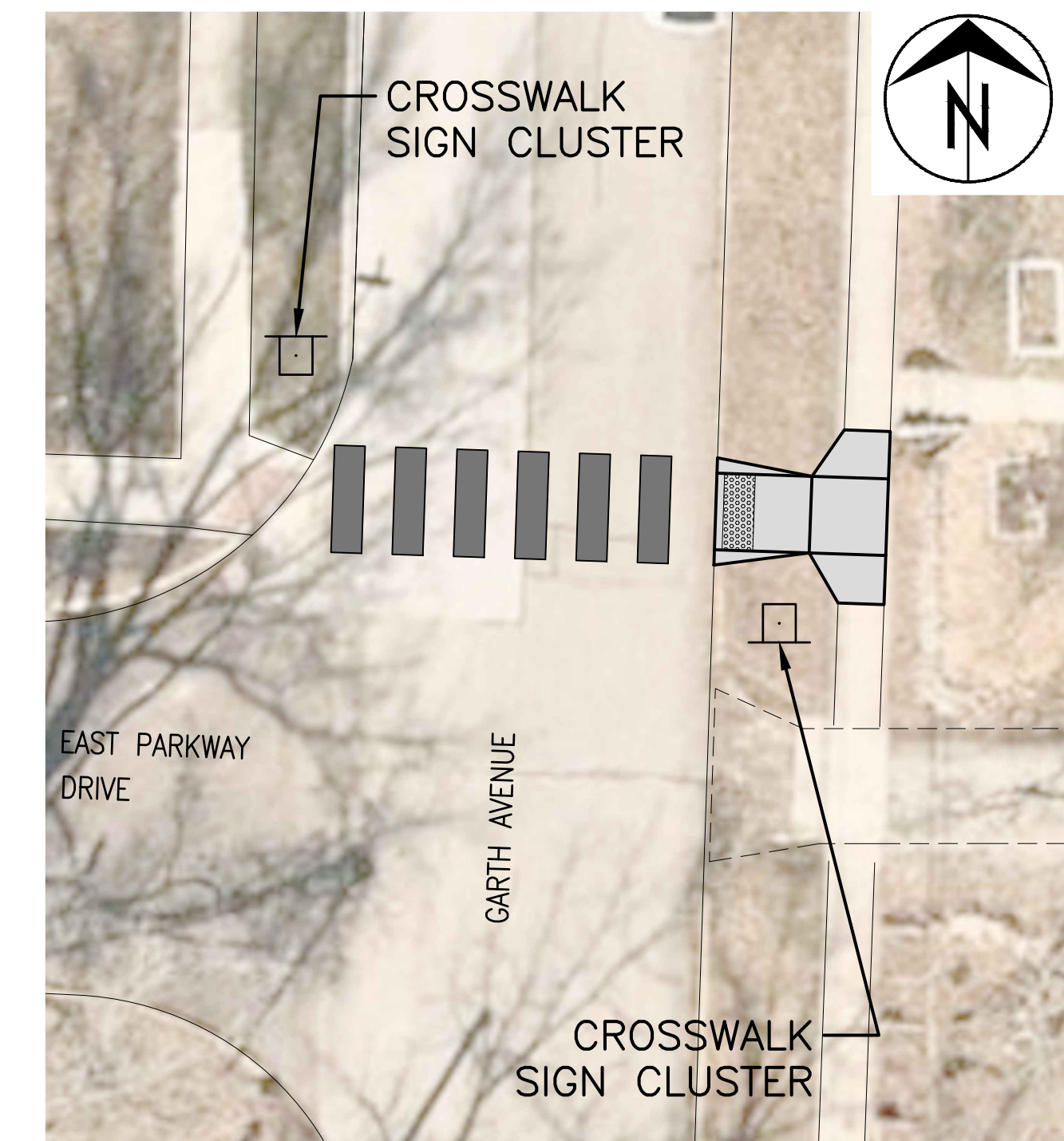
**SOUTH GARTH AVENUE – CRESTMERE AVENUE**  
1" = 20'



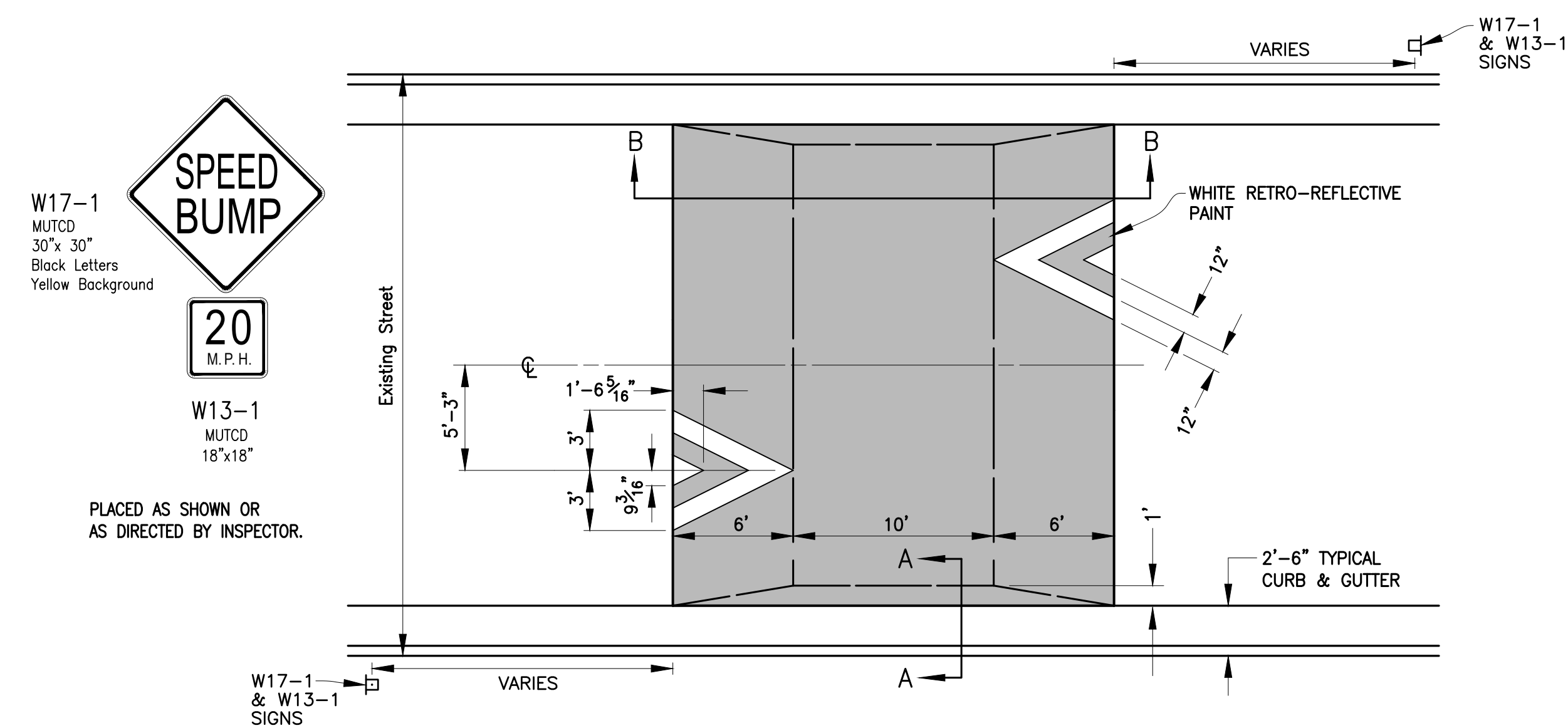
**SOUTH GARTH AVENUE – PARK HILL AVENUE**  
1" = 20'



**300 SOUTH GARTH AVENUE**  
1" = 20'

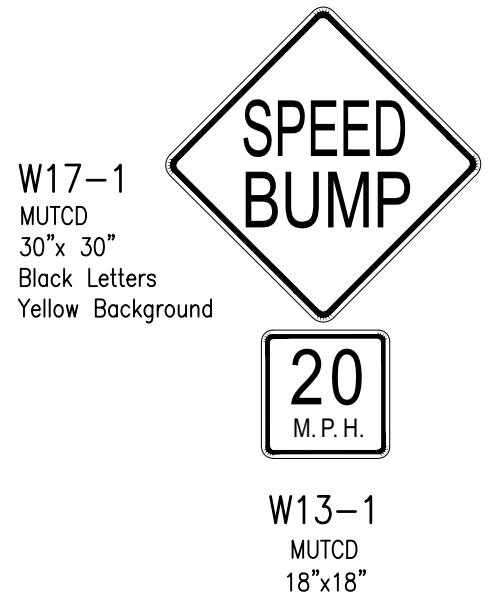


**SOUTH GARTH AVENUE – EAST PARKWAY DRIVE**  
1" = 10'

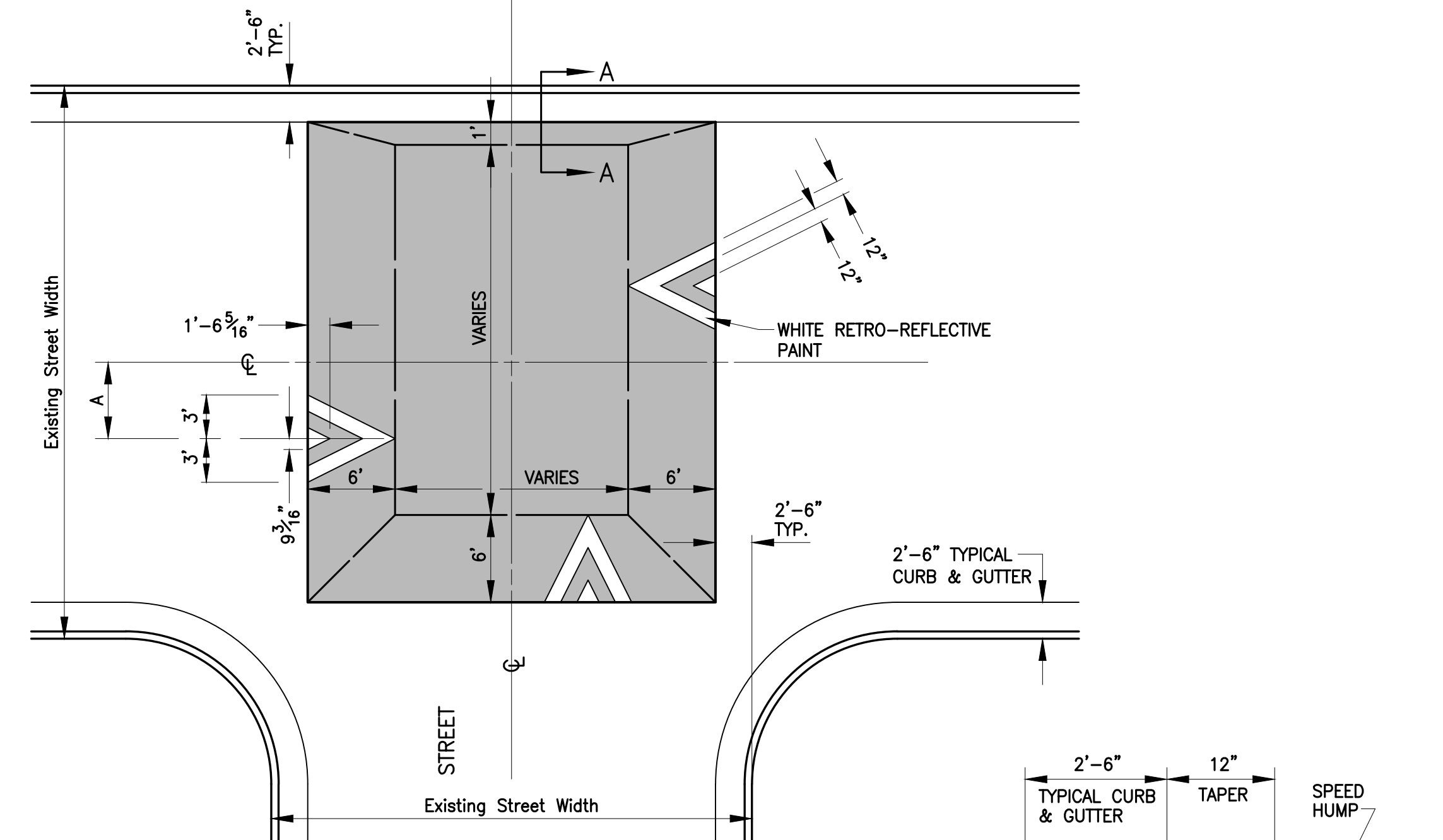


**PLAN**  
NOT TO SCALE

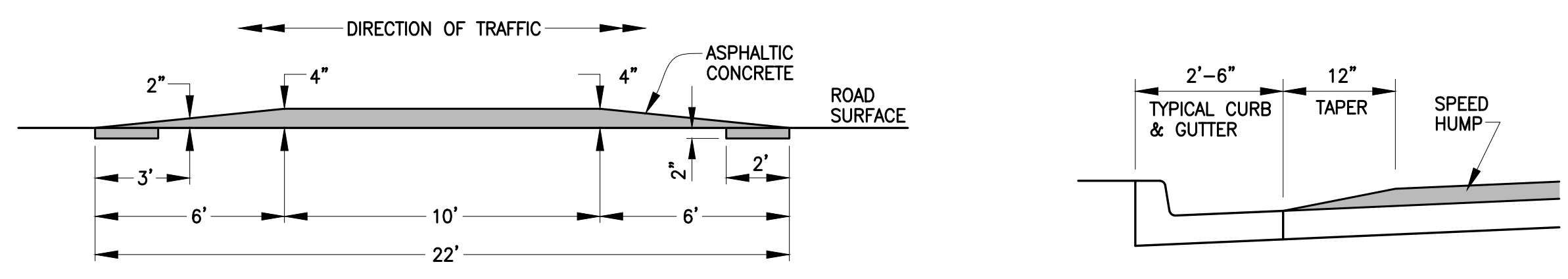
Existing Street Width (Back of Curb to Back of Curb)	A
38' & wider	5'-3"
between 32' & 38'	3'-9"
32' & narrower	3'-2"



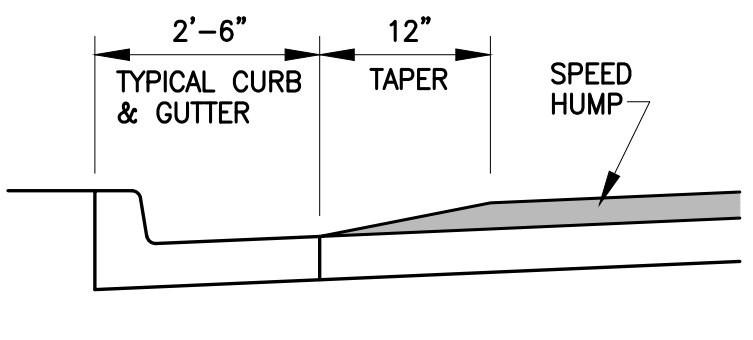
PLACED APPROX. 30' BEFORE TABLE OR AS DIRECTED BY INSPECTOR.



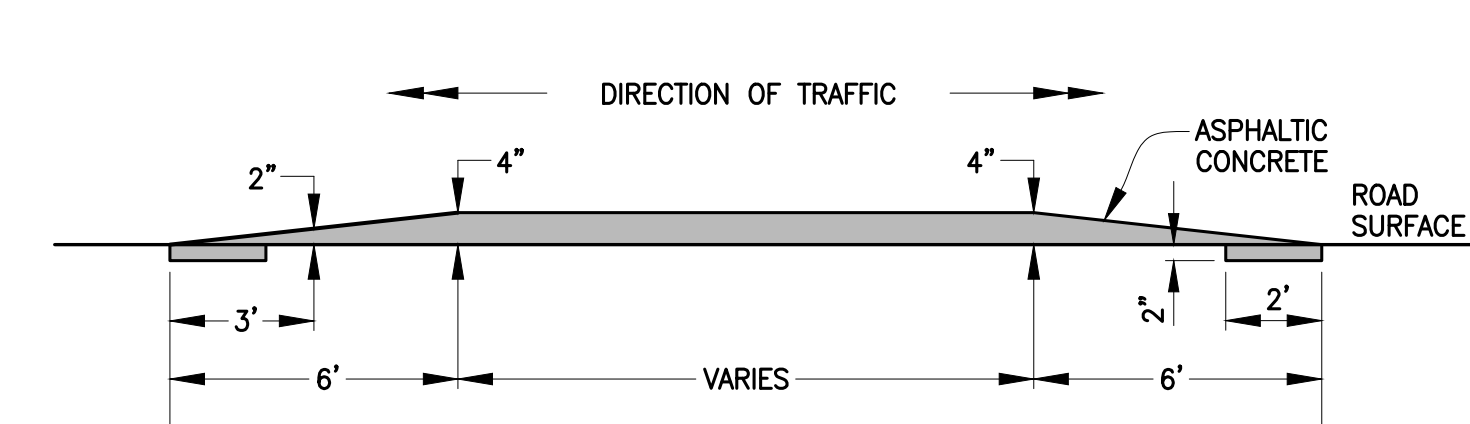
**PLAN**  
NOT TO SCALE



**SECTION B-B**  
NOT TO SCALE



**SECTION A-A**  
NOT TO SCALE



**PROFILE**  
NOT TO SCALE

**SPEED TABLE – T-INTERSECTION**

Revision	By	Date	No.

**SOUTH GARTH AVENUE  
TRAFFIC CALMING**  
Speed Hump, Speed Table, Crosswalk

City of Columbia, Missouri  
Department of Public Works

Shane Steven Creech  
Registered Professional Engineer  
PE-2007011061

File No. .  
Scale: As Shown  
Date: 10/24/2022  
Des. A.S.B.  
Dwn. T.M.G.  
Chk. J.D.R.