

Race Headquarters

Athlete Pavilion

Timing Tower

Starting Line

Finish Line

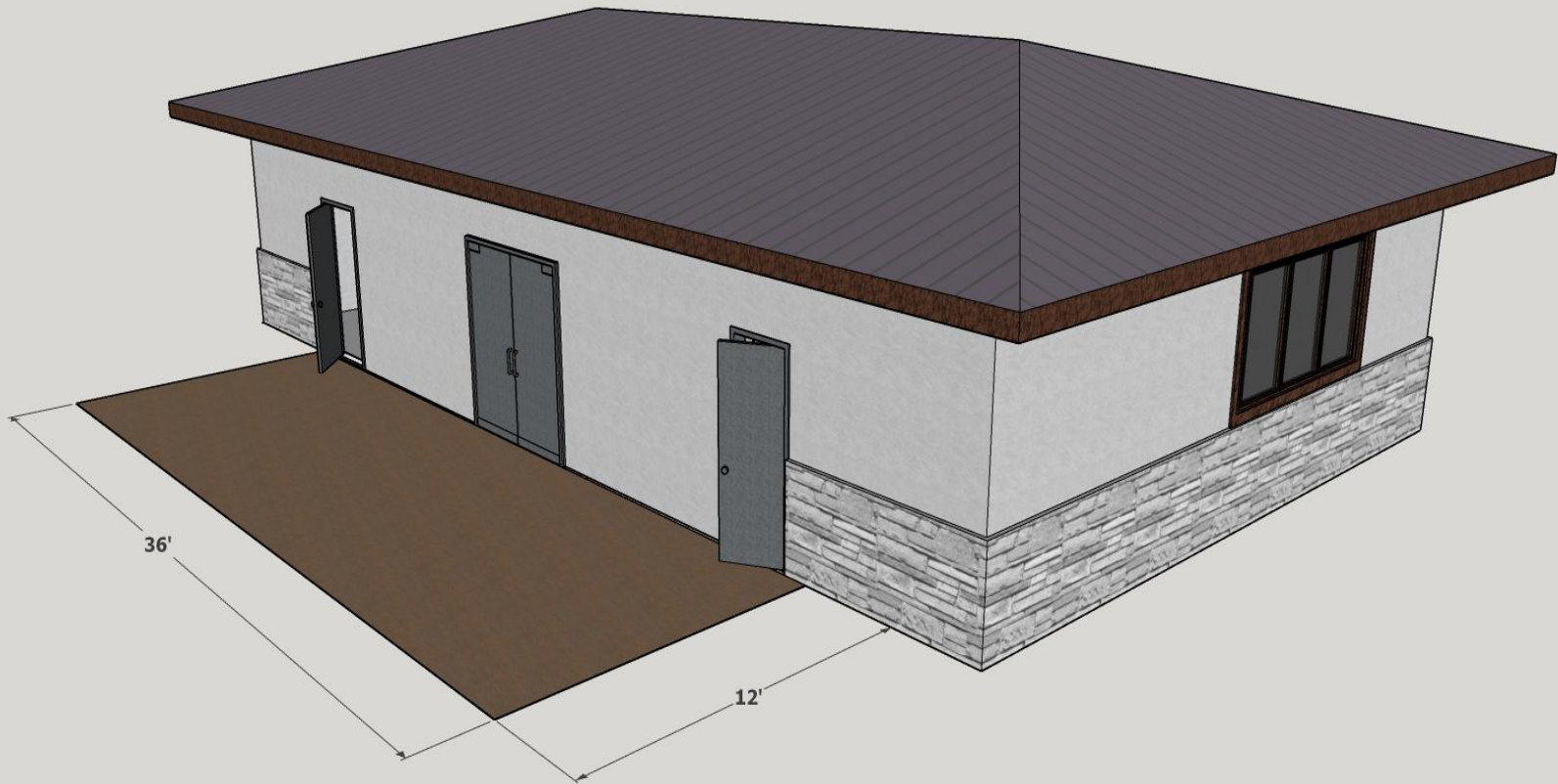
Greg Hall
Champions Plaza

Spectator Berm
ADA Viewing

**GANS CREEK RECREATION AREA
CROSS COUNTRY COURSE IMPROVEMENTS**
January 19, 2021



**GANS CREEK RECREATION AREA
RACE HEADQUARTERS BUILDING (FRONT)**
January 19, 2021



**GANS CREEK RECREATION AREA
RACE HEADQUARTERS BUILDING (FRONT)**
January 19, 2021

Outdoor Speakers
Mounted to Wall

- * 12-ft x 37-ft Concrete Wall
w/ Stone Veneer
- * Electric and Fiber Outlets
- * Customized Banners for Events

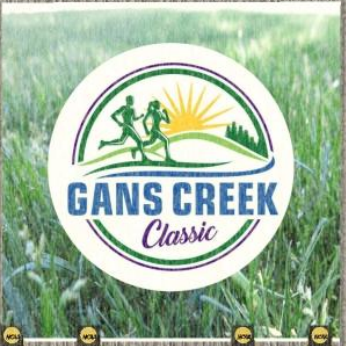
8" Aluminum Lettering

22" x 32 x 18" Base Structure
Bronze Sculpture Plaque: 20" x 30"

GANS CREEK RECREATION AREA
GREG HALL CHAMPIONS PLAZA
January 19, 2021

3-Level Staging behind Front Wall
Lower Level at 30" Height: 20 Athletes
Mid Level at 36" Height: 10 Athletes
Upper Level at 42" Height: 10 Athletes





Columbia Parks and Recreation Community

Columbia Parks and Recreation Creating Community



GREG HALL CHAMPIONS PLAZA



GANS CREEK RECREATION AREA
GREG HALL CHAMPIONS PLAZA
January 19, 2021



GREG HALL CHAMPIONS PLAZA



GANS CREEK RECREATION AREA
GREG HALL CHAMPIONS PLAZA
January 19, 2021

An architectural rendering of the Greg Hall Champions Plaza. The scene is viewed from a low angle. In the foreground, a grey concrete plaza floor is visible. A small, rectangular, dark-colored plaque with a bronze relief of a person is mounted on a pedestal in the center. Behind the plaza is a wall made of light-colored, textured stone blocks. Above the stone wall is a large, rectangular area with a vertical wood-grain texture. At the very top of the image, there are two green, stylized tree silhouettes. The text "GREG HALL CHAMPIONS PLAZA" is overlaid in large, bold, olive-green capital letters across the stone wall.

GREG HALL CHAMPIONS PLAZA

**GANS CREEK RECREATION AREA
GREG HALL CHAMPIONS PLAZA**
January 19, 2021