
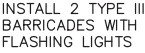



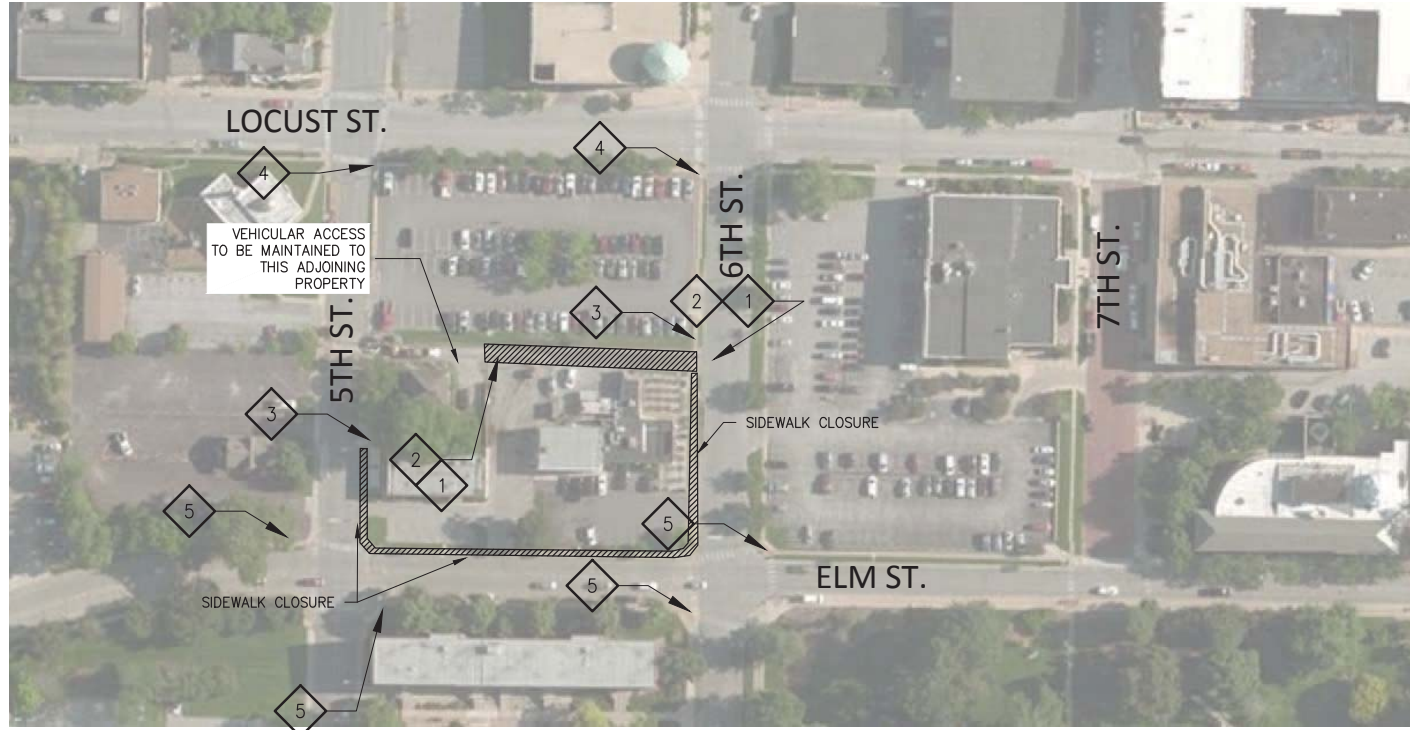


KEYNOTES

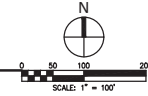
- 1  ROAD CLOSED TO THRU TRAFFIC
- 2  INSTALL 2 TYPE III BARRICADES WITH FLASHING LIGHTS
- 3  **SIDEWALK CLOSED**
R9-9
- 4  **SIDEWALK CLOSED AHEAD**
CROSS HERE
R9-11
- 5  **SIDEWALK CLOSED**
CROSS HERE
R9-11A



GENERAL NOTES

1. ALLEY AND SIDEWALK CLOSURE TO BE FROM AUGUST 16, 2016 – AUGUST 15, 2017. ALLEY WILL BE RE-OPENED PRIOR TO THE DATE NOTED ABOVE SHOULD CONSTRUCTION PROGRESS ALLOW WITHOUT ENDANGERING PUBLIC SAFETY.
2. ALLEY CLOSURE REQUIRED FOR BUILDING CONSTRUCTION.
3. SEE OTHER PLANS FOR CLOSURES AND TRAFFIC CONTROL ALONG 5TH, 6TH, AND ELM STREETS.

1 ALLEY AND SIDEWALK CLOSURE PLAN



Digitally signed by Michael M. Hall, P.E., M.ASCE
 DN: cn=Michael M. Hall, o=Catalyst Design Works, ou=Michael M. Hall, P.E., M.ASCE
 Date: 2016.07.27 09:03:14-0500



MO. ENG. CORP
 #2013000149
 EXP. 12-31-2017

ALLEY & SIDEWALK CLOSURE
 6TH & ELM APARTMENT PROJECT
 COLUMBIA, MISSOURI

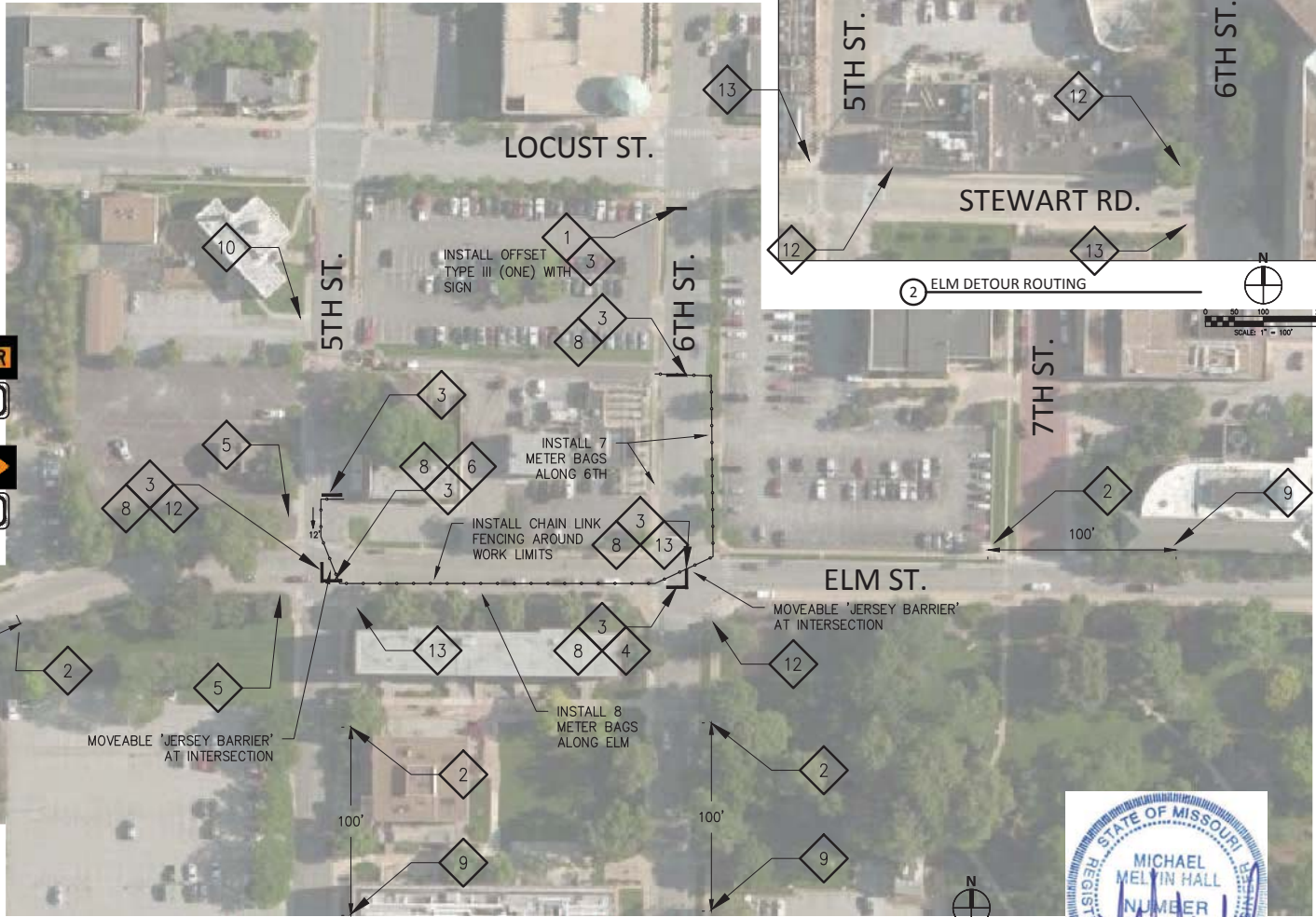
SCALE	FIELD BOOK	REVISION
MMH	MMH	
DATE	DRAWN	APPROVED

PROJECT NO.
114006-1

SHEET NO.
C1.1

KEYNOTES

- 1 ROAD CLOSED TO THRU TRAFFIC
 - 2 ROAD CLOSED AHEAD
 - 3 INSTALL TYPE III BARRICADES WITH FLASHING LIGHTS
 - 4 ONE WAY
 - 5 NO RIGHT TURN
 - 6 ONE WAY
 - 8 ROAD CLOSED
 - 9 ROAD WORK AHEAD
 - 10 ONE LANE ROAD AHEAD
 - 11 REMOVED FROM PLAN
 - 12 DETOUR
 - 13 DETOUR
- W020-5
W020-1
R6-1R
R3-2
R6-1L
R11-2
W20-1
W20-4
- ELM ST. M4-10L
ELM ST. M4-10R



GENERAL NOTES

1. ELM TO BE CLOSED FROM SEPTEMBER 1, 2016 TO OCTOBER 31, 2016 FOR THE RECONSTRUCTION OF A SANITARY SEWER MAIN.
2. CONTRACTOR WILL OBTAIN NECESSARY PARKING METER BAGS AND PAY ASSOCIATED FEES.
3. EXISTING STOP SIGNS TO REMAIN IN SERVICE AT ALL TIMES. DO NOT BLOCK STOP SIGNS.
4. A TOTAL OF 8 PARKING SPACES WILL BE REMOVED FROM SERVICE ALONG ELM FOR THE DURATION OF THE CLOSURE.
5. A TOTAL OF 4 SPACES ON THE WEST SIDE OF 6TH AND THREE ALONG THE EAST SIDE OF 6TH WILL BE REMOVED FROM SERVICE FOR THE DURATION OF THE CLOSURE.
6. 12' LANES TO BE MAINTAINED AT ALL TIMES.



Michael M. Hall, P.E., M.ASCE
 Digitally signed by Michael M. Hall, P.E., M.ASCE
 DN: cn=Michael M. Hall, o=Catalyst Design Works, c=US
 Date: 2016.08.04 11:27:00 -0500



MO. ENG. CORP
 #2013000149
 EXP. 12-31-2017

ELM CLOSURE SANITARY
 6TH & ELM APARTMENT PROJECT
 COLUMBIA, MISSOURI











DATE	8/1/16	MMH	MMH
DRAWN	MMH	MMH	
APPROVED			
SCALE	FIELD BOOK	REVISION	

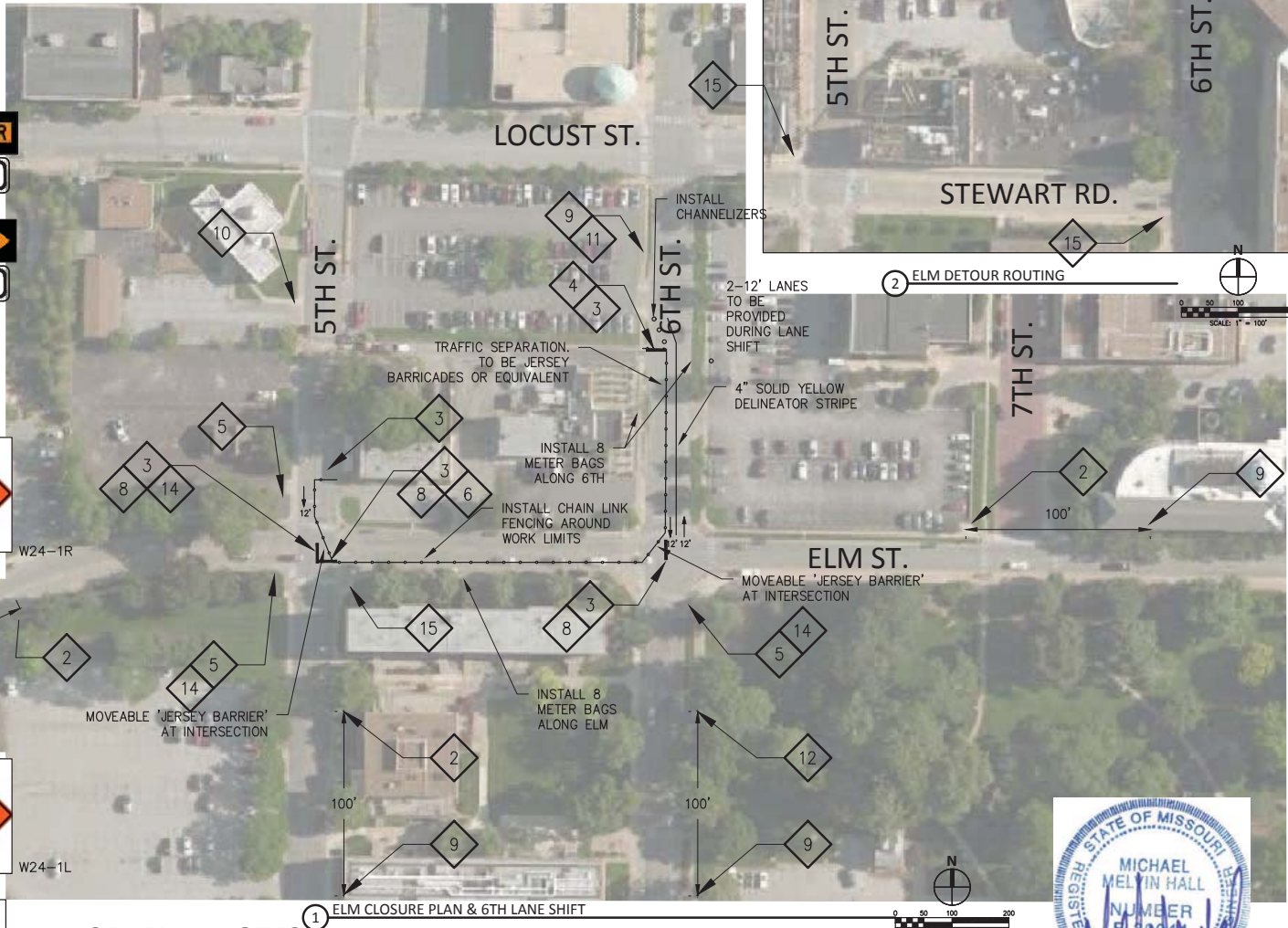
PROJECT NO.
114006-1

SHEET NO.
C1.3

| mhall | V:\Projects\114006-1 6th & Elm.dwg\Misc\114006-1 Traffic Control Plan.dwg | DATE: 04/08/2016 | TIME: 11:24

KEYNOTES


1	REMOVED FROM PLAN
2	 ROAD CLOSED AHEAD W020-5
3	INSTALL TYPE III BARRICADES WITH FLASHING LIGHTS
4	REMOVED FROM PLAN
5	 NO RIGHT TURN
6	 ONE WAY R6-1L
8	 ROAD CLOSED R11-2
9	 ROAD WORK AHEAD W20-1
10	 ONE LANE ROAD AHEAD W20-4
11	 RIGHT TURN AHEAD W24-1L
12	 LEFT TURN AHEAD R3-2
13	REMOVED FROM PLAN
14	 DETOUR M4-10R
15	 DETOUR M4-10L



GENERAL NOTES

- ELM TO BE CLOSED AND SHIFT ON 6TH FROM OCTOBER 31, 2016 TO JANUARY 1, 2017 FOR THE RECONSTRUCTION OF A STORM SEWER.
- CONTRACTOR WILL OBTAIN NECESSARY PARKING METER BAGS AND PAY ASSOCIATED FEES.
- EXISTING STOP SIGNS TO REMAIN IN SERVICE AT ALL TIMES. DO NOT BLOCK STOP SIGNS.
- A TOTAL OF 8 PARKING SPACES WILL BE REMOVED FROM SERVICE ALONG ELM FOR THE DURATION OF THE CLOSURE.
- A TOTAL OF 4 SPACES ON THE WEST SIDE OF 6TH AND 4 ALONG THE EAST SIDE OF 6TH WILL BE REMOVED FROM SERVICE FOR THE DURATION OF THE CLOSURE.
- 12' LANES TO BE MAINTAINED AT ALL TIMES.





Catalyst
Columbia, MO
4240 PETERS FARM ROAD, SUITE 101 COLUMBIA, MISSOURI 65201
PHONE (672) 442-9922

MO. ENG. CORP
#2013000149
EXP. 12-31-2017

ELM & 6TH STORM	SCALE	FIELD BOOK
6TH & ELM APARTMENT PROJECT	8/1/16	MMH
COLUMBIA, MISSOURI	MMH	REVISION
DATE	DRAWN	APPROVED

PROJECT NO.
114006-1

SHEET NO.
C1.4

I:\mhall | V:\Projects\114006-1 6th & Elm.dwg\Misc\114006-1 Traffic Control Plan.dwg | DATE: 04/08/2016 | TIME: 11:24

KEYNOTES

1	REMOVED FROM PLAN	15	
2		14	
3	INSTALL TYPE III BARRICADES WITH FLASHING LIGHTS	13	REMOVED FROM PLAN
4		12	
5		11	
6	REMOVED FROM PLAN	10	
8		9	
9		8	

W020-5
 M4-10L
 M4-10R
 W020-5
 R3-1
 W24-1R
 R3-2
 W24-1L
 R11-2
 W20-1
 W20-4



GENERAL NOTES

- ELM TO BE ONE WAY AND SHIFT ON 6TH FROM JANUARY 1, 2017 TO AUGUST 15, 2017 FOR THE RECONSTRUCTION OF A STORM SEWER.
- CONTRACTOR WILL OBTAIN NECESSARY PARKING METER BAGS AND PAY ASSOCIATED FEES.
- EXISTING STOP SIGNS TO REMAIN IN SERVICE AT ALL TIMES. DO NOT BLOCK STOP SIGNS.
- A TOTAL OF 8 PARKING SPACES WILL BE REMOVED FROM SERVICE ALONG ELM FOR THE DURATION OF THE CLOSURE.
- A TOTAL OF 4 SPACES ON THE WEST SIDE OF 6TH AND 4 ALONG THE EAST SIDE OF 6TH WILL BE REMOVED FROM SERVICE FOR THE DURATION OF THE CLOSURE.
- 12' LANES TO BE MAINTAINED AT ALL TIMES.



CATALYST
 Columbia, MO
 4240 PETERS FARM ROAD, SUITE 100 COLUMBIA, MISSOURI 65201
 PHONE (672) 442-9922

MO. ENG. CORP
 #2013000149
 EXP. 12-31-2017

ELM & 6TH BUILDING 6TH & ELM APARTMENT PROJECT COLUMBIA, MISSOURI	
SCALE	FIELD BOOK
DATE	APPROVED
8/1/16	MMH
MMH	MMH
REVISION	
PROJECT NO. 114006-1	
SHEET NO. C1.5	