

#17-166: Bisk, LLC Coffee Shop PD Plan



Roads	Columbia City Limit
City Zoning	CityViewparcels
Parcels	

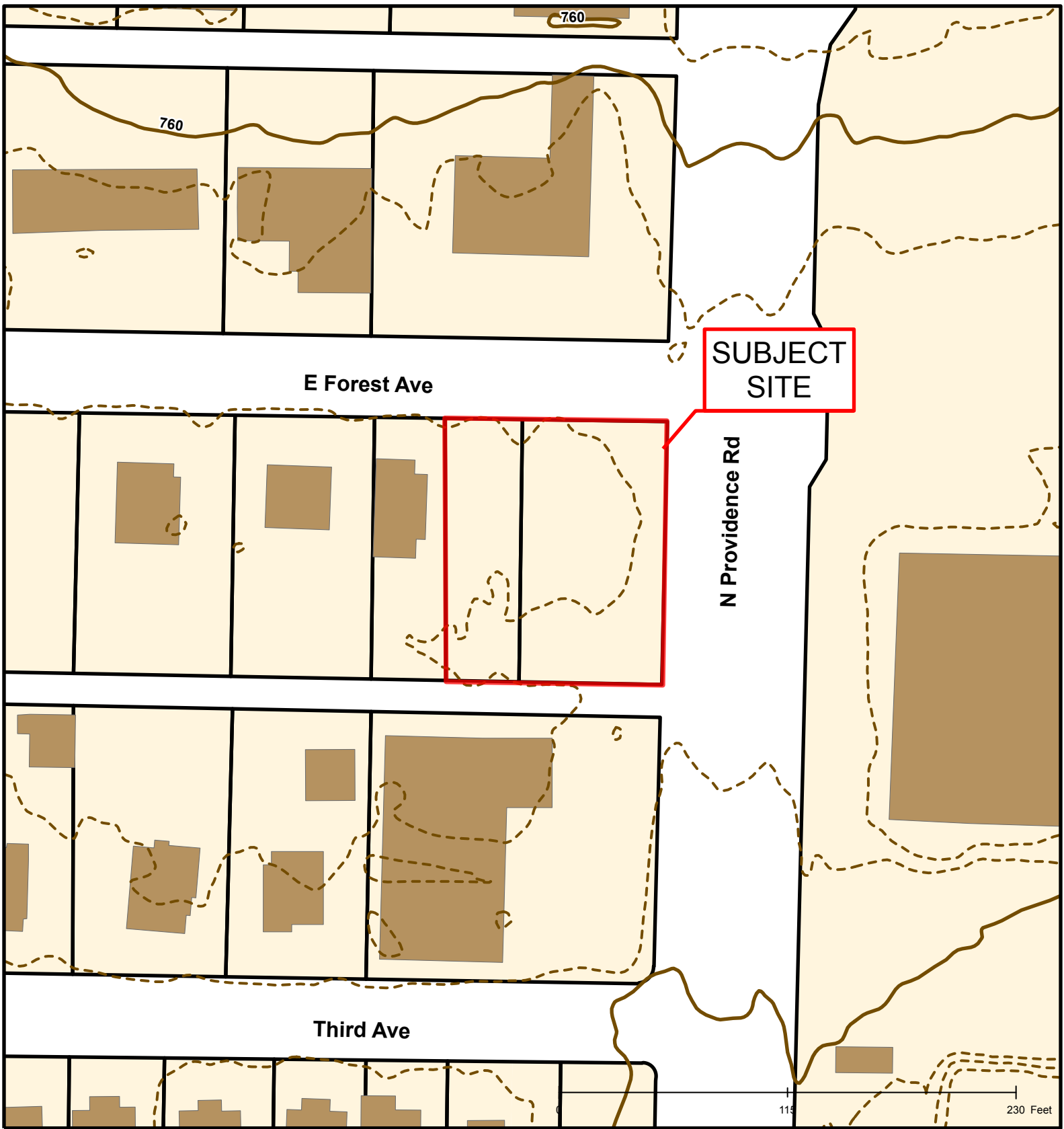


Created by The City of Columbia - Community Development Department

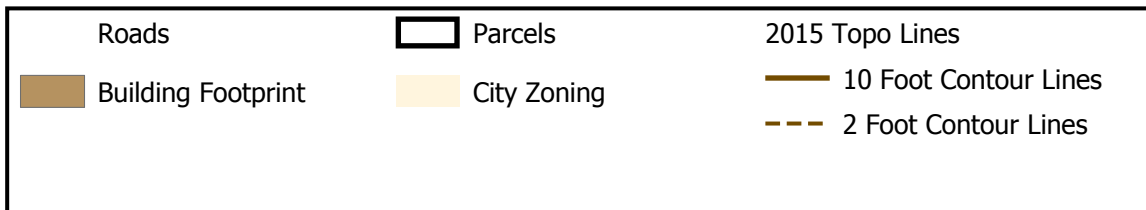
Parcel Data Source: Boone County Assessor

2015 Imagery: Boone County Assessor's Office

Hillshade Data: Boone County GIS Office



#17-166: Bisk, LLC Coffee Shop PD Plan



Created by The City of Columbia - Community Development Department

Parcel Data Source: Boone County Assessor

2015 Imagery: Boone County Assessor's Office

Hillshade Data: Boone County GIS Office



#17-166: Bisk, LLC Coffee Shop PD Plan



City Sanitary Structure	Columbia City Limit
Roads	Building Footprint
City Sanitary Line	Parcels



Created by The City of Columbia - Community Development Department