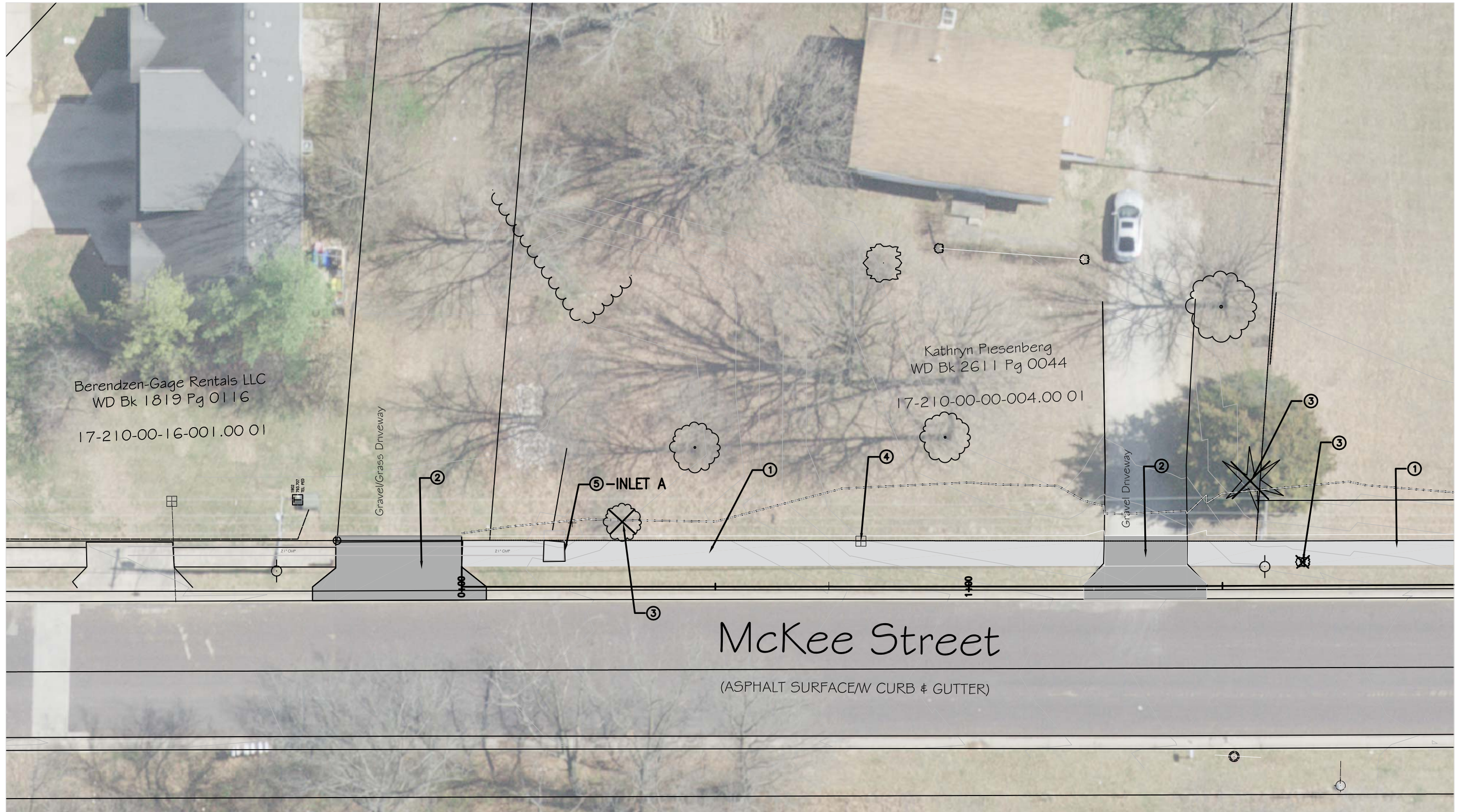
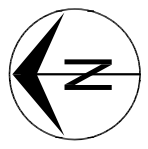


- ① CONSTRUCT 5' WIDE 4" THICK PCC SIDEWALK PER DETAIL 1
- ② REMOVE AND RECONSTRUCT RESIDENTIAL DRIVEWAY PER DETAIL 3
- ③ REMOVE TREE/BUSHES/STUMP
- ④ ADJUST VAVLE
- ⑤ REMOVE EXISTING INLET AND RECONSTRUCT SIDE OPENING INLET PER DETAIL 4 AND 5



No.	Date	By	Revision

MCKEE STREET SIDEWALK
Plan Sheet

City of Columbia, Missouri
Department of Public Works

David Allen Nichols
Registered Professional Engineer
E-24212

File No. .
Scale: 1" = 10'
Date: APRIL 2019
Des. E.M.F.
Dwn. E.M.F.
Chk. AAA.

MATCHLINE STA. 2+00

- ① REMOVE EXISTING 4' SIDEWALK
- ② CONSTRUCT 5' WIDE 4" THICK PCC SIDEWALK PER DETAIL 1
- ③ REMOVE AND RECONSTRUCT RESIDENTIAL DRIVEWAY PER DETAIL 3
- ④ REMOVE AND RECONSTRUCT CONCRETE PAD
- ⑤ REMOVE TREE/BUSHES/STUMP
- ⑥ ADJUST VALVE



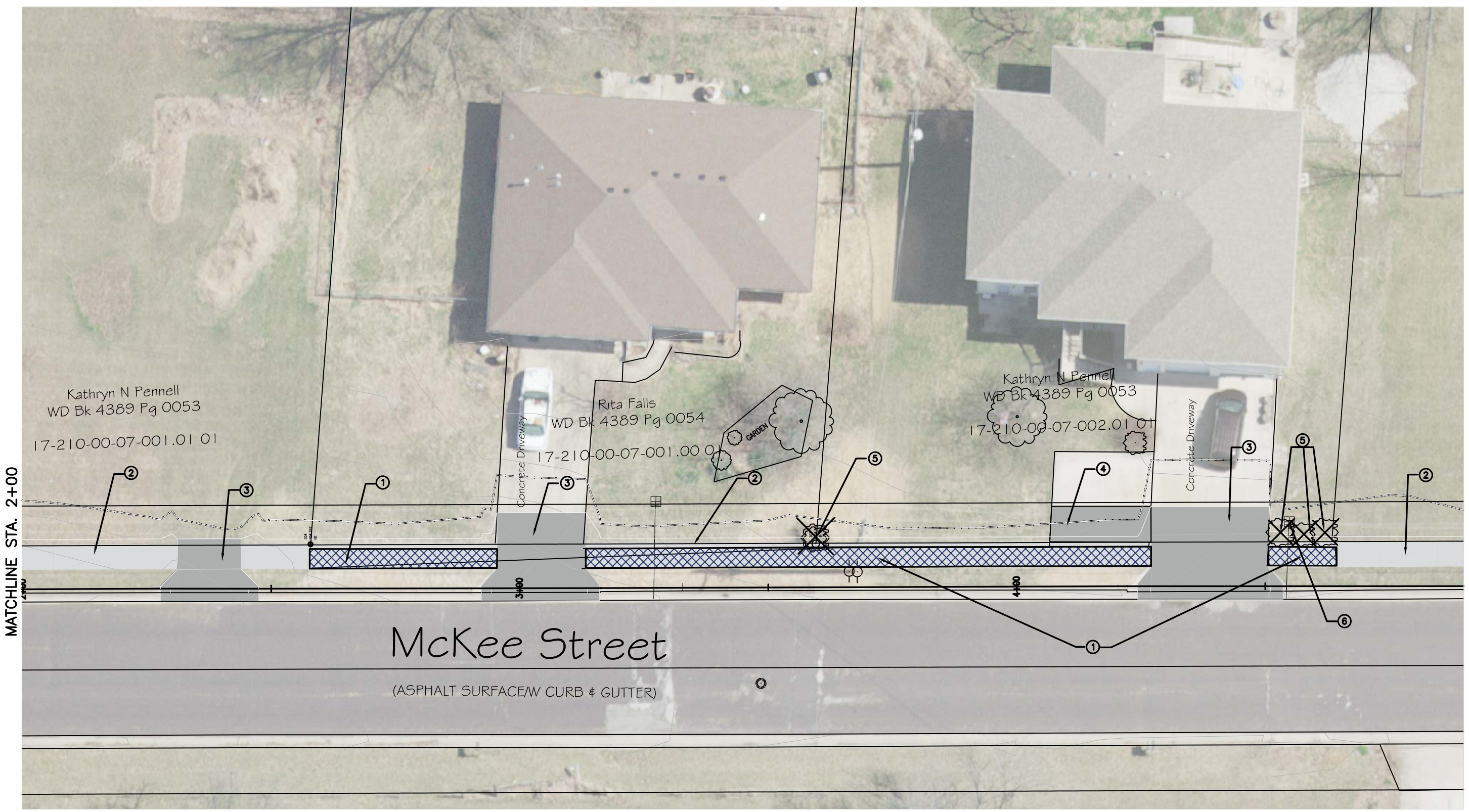
Revision	By	Date	No.

MCKEE STREET SIDEWALK
Plan Sheet

City of Columbia, Missouri
Department of Public Works

David Allen Nichols
Registered Professional Engineer
E-24212

File No. .
Scale: 1" = 10'
Date: APRIL 2019
Des. E.M.F.
Dwn. E.M.F.
Chk. AAA.

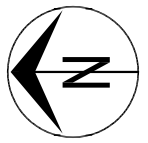


MATCHLINE STA. 2+00

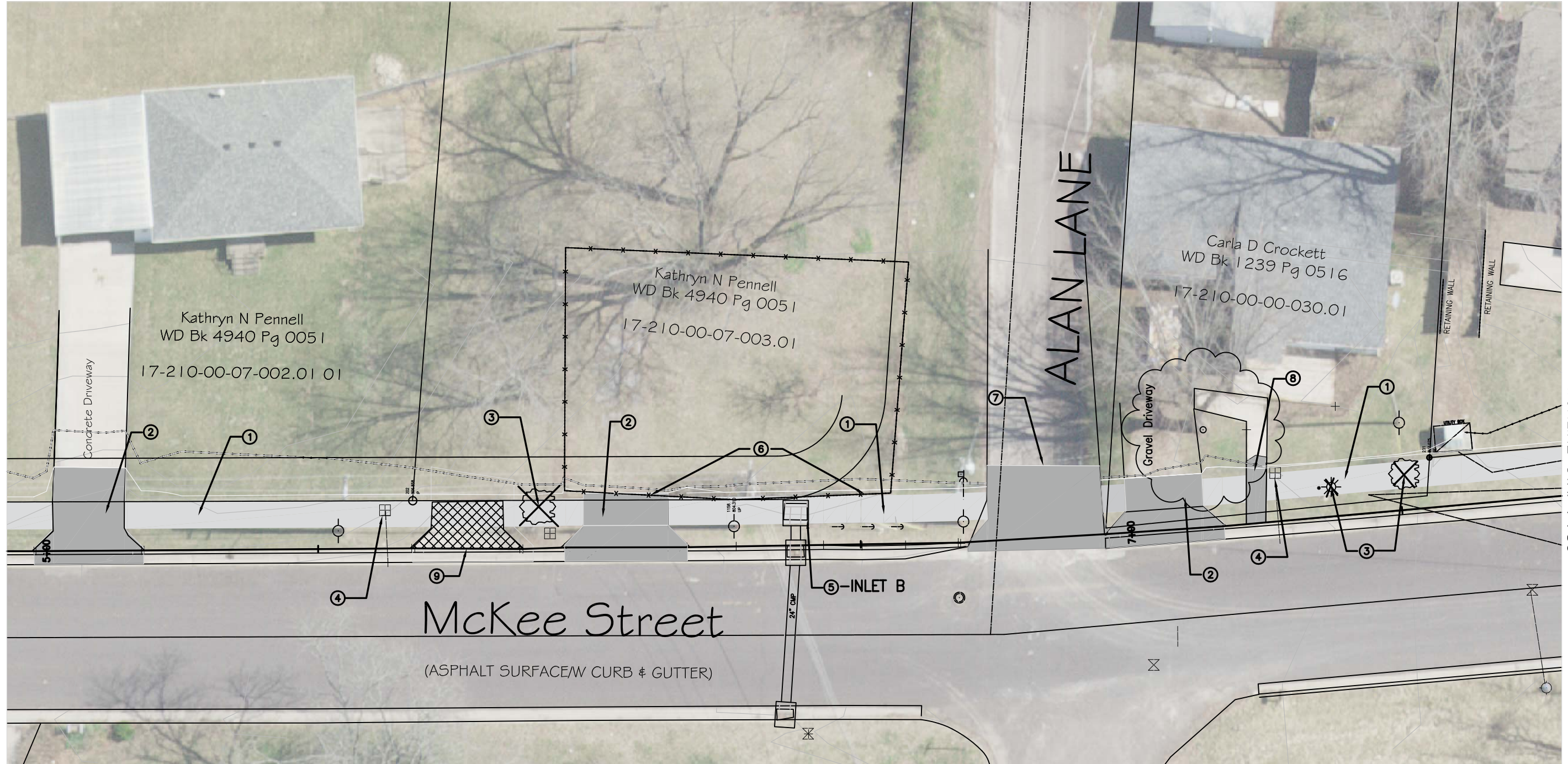
MATCHLINE STA. 4+90

- ① CONSTRUCT 5' WIDE 4" THICK PCC SIDEWALK PER DETAIL 1
- ② REMOVE AND RECONSTRUCT RESIDENTIAL DRIVEWAY PER DETAIL 3
- ③ REMOVE TREE/BUSHES/STUMP
- ④ ADJUST VAVLE
- ⑤ REMOVE EXISTING INLET AND RECONSTRUCT SIDE OPENING INLET PER DETAIL 4 AND 6

- ⑥ REMOVE AND REPLACE FENCE
- ⑦ REPLACE STREET ENTRANCE
- ⑧ REMOVE AND RECONSTRUCT RESIDENTIAL SIDEWALK
- ⑨ REMOVE DRIVEWAY



Revision	By	Date	No.



MATCHLINE STA. 4+90

MATCHLINE STA. 7+80

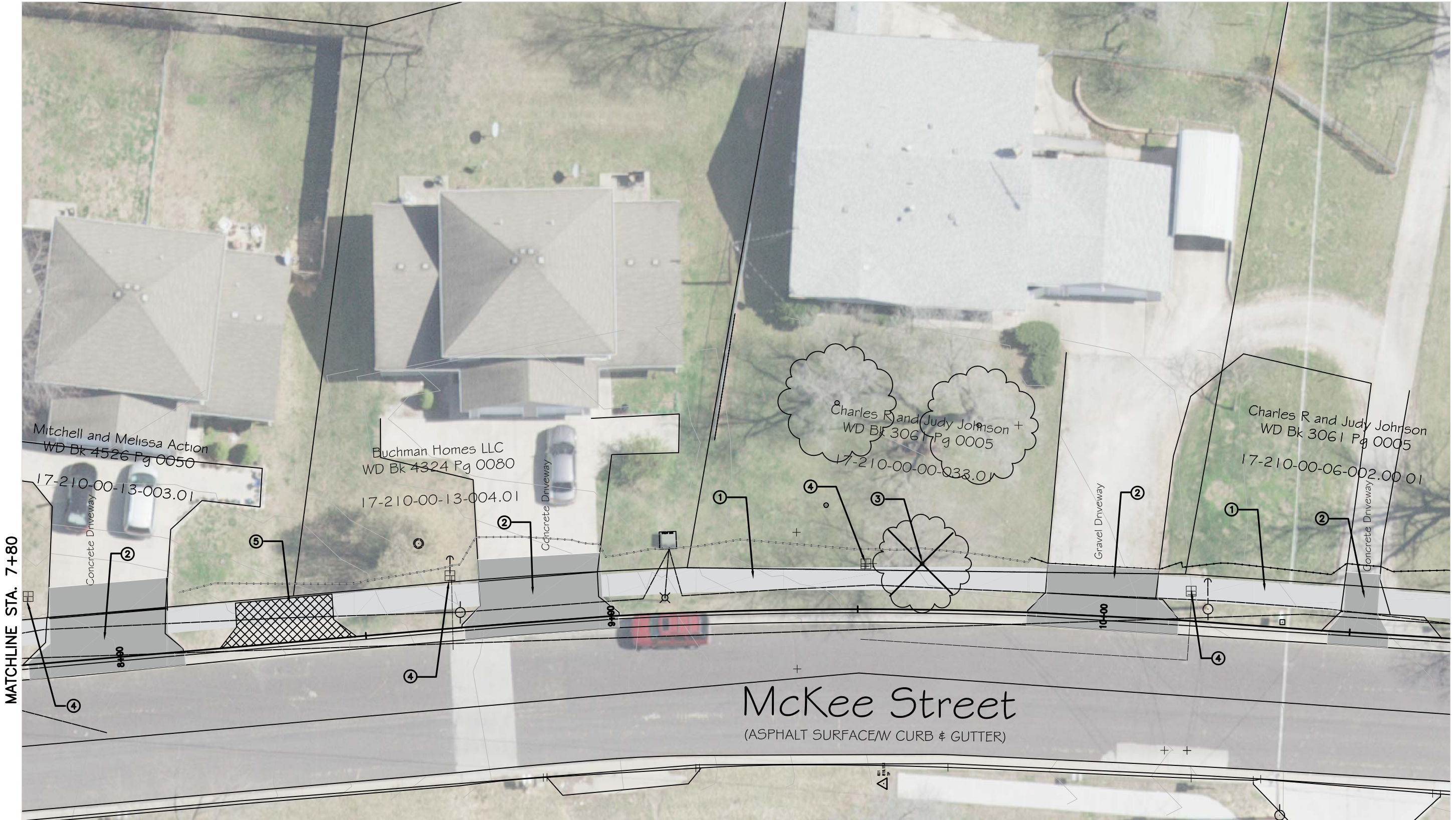
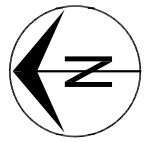
MCKEE STREET SIDEWALK
Plan Sheet

City of Columbia, Missouri
Department of Public Works

David Allen Nichols
Registered Professional Engineer
E-24212

File No.	
Scale:	1" = 10'
Date:	APRIL 2019
Des.	E.M.F.
Dwn.	E.M.F.
Chk.	AAA.

- ① CONSTRUCT 5' WIDE 4" THICK PCC SIDEWALK PER DETAIL 1
- ② REMOVE AND RECONSTRUCT RESIDENTIAL DRIVEWAY PER DETAIL 3
- ③ REMOVE TREE/BUSHES/STUMP
- ④ ADJUST VAVLE
- ⑤ REMOVE DRIVEWAY



MATCHLINE STA. 7+80

MATCHLINE STA. 10+70

No.	Date	By	Revision

MCKEE STREET SIDEWALK
Plan Sheet

City of Columbia, Missouri
Department of Public Works

David Allen Nichols
Registered Professional Engineer
E-24212

File No. .
Scale: 1" = 10'
Date: APRIL 2019
Des. E.M.F.
Dwn. E.M.F.
Chk. AAA.

- ① CONSTRUCT 5' WIDE 4" THICK PCC SIDEWALK PER DETAIL 1
- ② REMOVE AND RECONSTRUCT RESIDENTIAL DRIVEWAY PER DETAIL 3
- ③ REMOVE TREE/BUSHES
- ④ ADJUST VAVLE
- ⑤ TRANSITION NEW SIDEWALK TO EXISTING SIDEWALK. END OF PROJECT



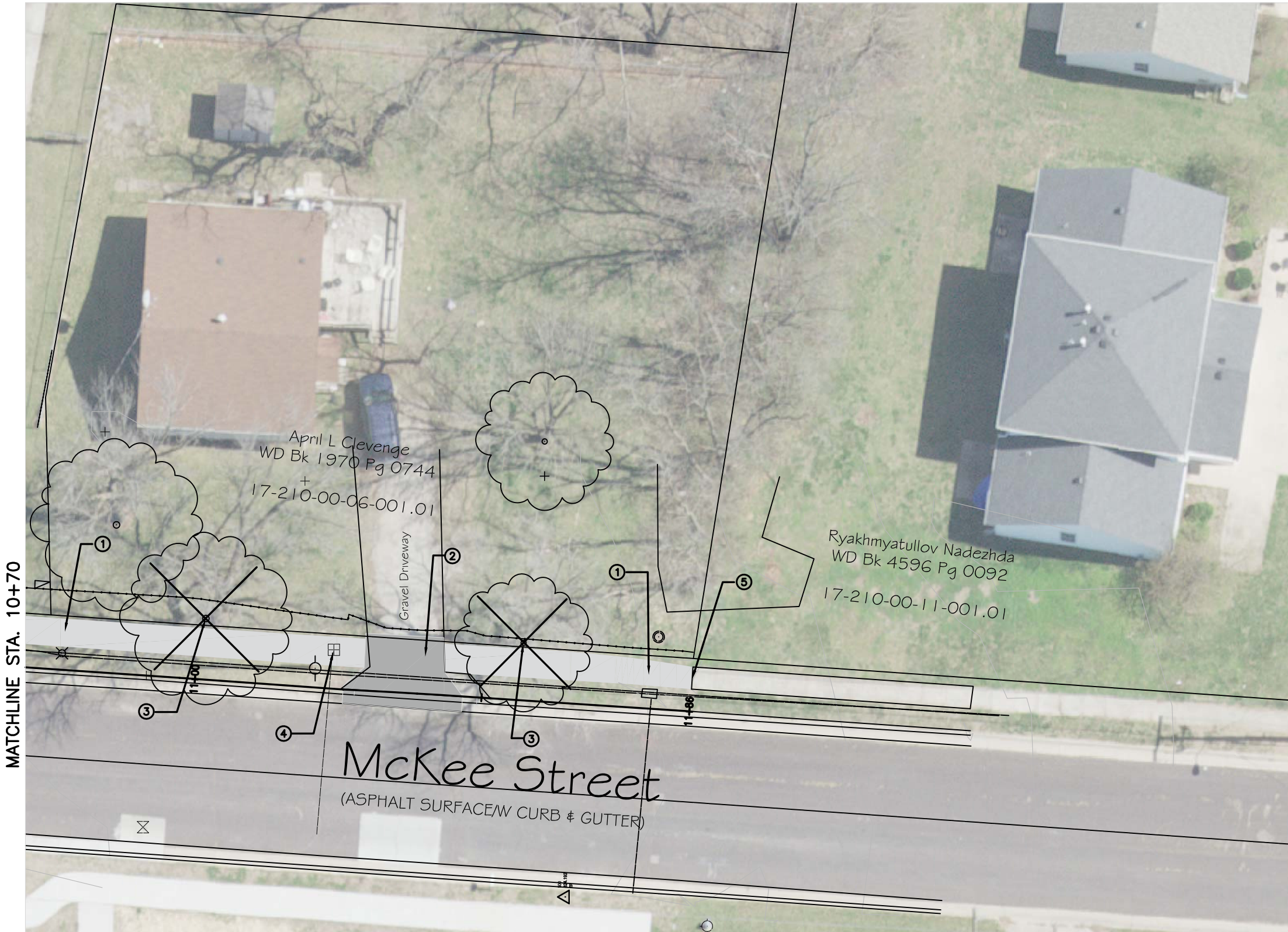
No.	Date	By	Revision

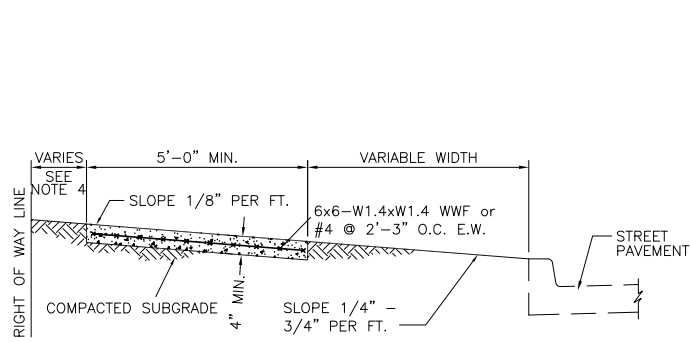
MCKEE STREET SIDEWALK
Plan Sheet

City of Columbia, Missouri
Department of Public Works

David Allen Nichols
Registered Professional Engineer
E-24212

File No. .
Scale: 1" = 10'
Date: APRIL 2019
Des. E.M.F.
Dwn. E.M.F.
Chk. AAA.

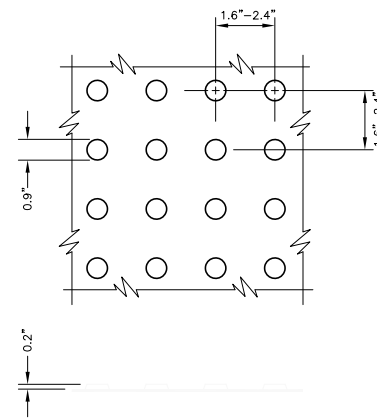




NOTE:

1. SIDEWALK SHALL BE 4" THICK CLASS A CONCRETE.
2. INSTALL 1/2" EXPANSION JOINTS AT INTERSECTIONS, RAMPS, STRUCTURES, DRIVEWAY APPROACHES, OR EVERY 150'.
3. INSTALL TRANSVERSE SAW JOINTS AT SPACING EQUAL TO SIDEWALK WIDTH.
4. STANDARD SIDEWALK PLACEMENT IS 12" FROM RIGHT OF WAY LINE.
5. NO STEEL TO BE PLACED THROUGH EXPANSION JOINT.
6. SIDEWALK CROSS SLOPE SHALL NOT EXCEED 2.00%.

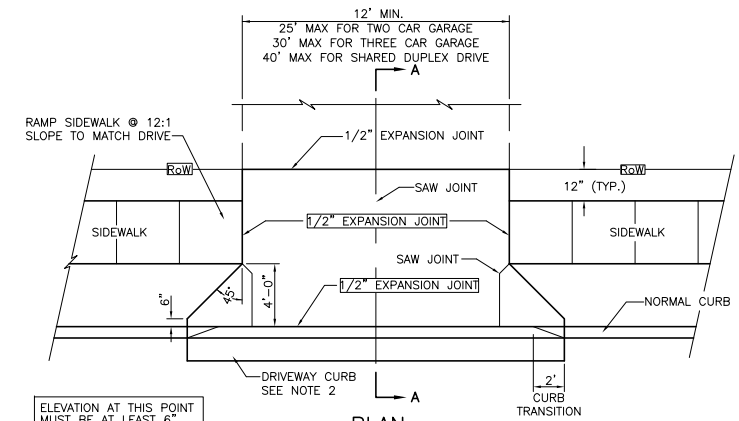
DETAIL 1: SIDEWALK WITH GRASS PARKWAY
(NOT TO SCALE)



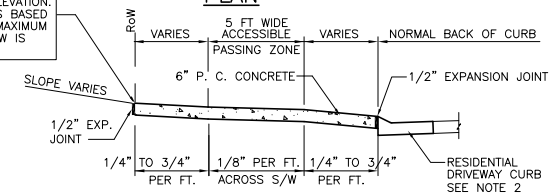
NOTE:

1. DETECTABLE WARNING SHALL CONSIST OF RAISED TRUNCATED DOMES WITH A DIAMETER OF 0.9", A HEIGHT OF NOMINAL 0.2", AND A CENTER-TO-CENTER SPACING OF NOMINAL 2.35", AND SHALL CONTRAST VISUALLY WITH ADJOINING SURFACES, ACHIEVED BY THE INSTALLATION OF ADA SOLUTIONS 2436 REPR, 2448 REPR, OR 2460 REPR (OR APPROVED EQUAL) AND SHALL BE AN INTEGRAL PART OF THE WALKING SURFACE.
2. ADA SOLUTIONS 24RADREPR OR APPROVED EQUAL TO BE USED WITH DETAIL 430.02, 432.02, AND 1000.08.
3. STAMPED CONCRETE IS NOT AN APPROVED EQUAL.
4. DOWNTOWN DETECTABLE WARNINGS MAY BE ADA 2004 COMPLIANT DETECTABLE WARNING PAVERS.
5. DETECTABLE WARNING PLATS ARE TO BE COLONIAL OR BRICK RED IN COLOR OR APPROVED EQUAL.
6. DETECTABLE WARNING SURFACES SHALL BE 24" WIDE AND EXTEND THE FULL LENGTH OF THE PUBLIC USE AREA.

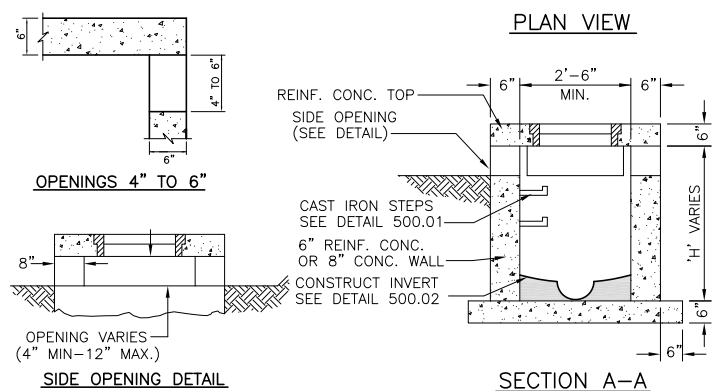
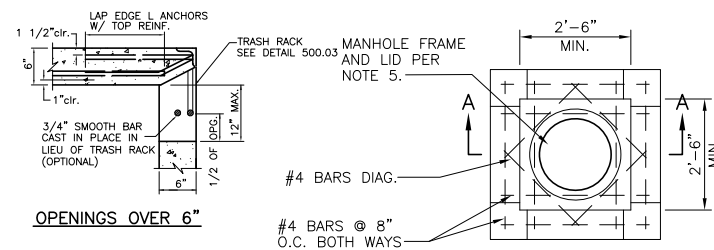
DETAIL 2: SIDEWALK RAMP WITH GRASS PARKWAY
(NOT TO SCALE)



ELEVATION AT THIS POINT MUST BE AT LEAST 6" ABOVE GUTTER ELEVATION. MAXIMUM ELEV. IS BASED ON ROW WIDTH. MAXIMUM SLOPE WITHIN ROW IS 3/4" PER FT.



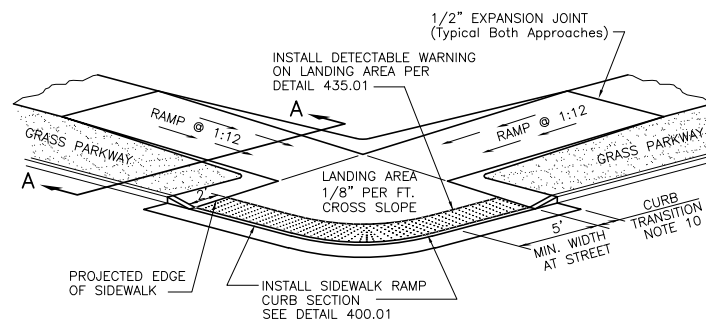
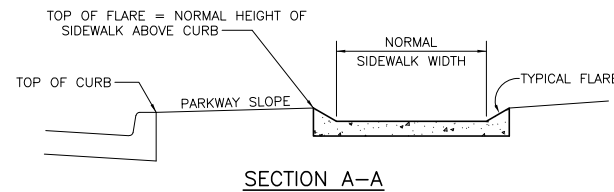
DETAIL 3: RESIDENTIAL DRIVEWAY
(NOT TO SCALE)



NOTES:

1. CONCRETE SHALL BE CLASS E FOR BASES AND D FOR WALLS AND TOP.
2. REINFORCING STEEL SHALL BE GRADE 60
3. INSTALL WEEP HOLES AS PER DETAIL 500.04
4. STRUCTURES WHERE H>8' SHALL BE REINFORCED CONCRETE (#4 BARS AT 12" CTRS, BOTH WAYS AND #4 BARS DIAGONAL AT PIPE OPENINGS)
5. FRAME AND LID SHALL BE NEENAH R-1960-A (TYPE C LID), DEETER 1180, OR APPROVED EQUAL. SEE DETAIL 500.01 FOR PLACEMENT.
6. SIDE OPENINGS TO BE ON ALL FOUR SIDES UNLESS NOTED OTHERWISE
7. INSTALL TRASH RACK ON OPENINGS OVER 6" SEE DETAIL 500.03

DETAIL 4: SIDE OPENING INLET
(NOT TO SCALE)



NOTE:

1. RAMP AND LANDING SHALL BE 6" THICK CLASS A CONCRETE WITH #4 BARS AT 12" O.C. E.W.
2. EXPANSION JOINT SHALL BE 1/2" PREFORMED CORK OR BITUMINOUS EXPANSION JOINT MATERIAL.
3. MAXIMUM RAMP CROSS SLOPE IS 2.00%.
4. ALL SLOPES ARE MEASURED FROM THE HORIZONTAL.
5. REPLACE STANDARD CURB SECTION WITH SIDEWALK RAMP CURB SECTION - DETAIL 400.01
6. RAMP LENGTH IS DEPENDENT ON 1:12 MAX. SLOPE. USE FLATTER WHEN POSSIBLE.
7. LANDING AREA SHALL BE 4'-0" MIN WIDTH, CROSS SLOPE OF LANDING SHALL NOT EXCEED 2.00%.
8. USE TYPE "B" RAMP ONLY IF TYPE "A" IS NOT FEASIBLE.
9. FLARES ARE REQUIRED AT RAMPS TO KEEP GRASS PARKWAY SLOPES IN CONFORMANCE WITH THE TYPICAL CROSS SECTION. (SEE SECTION A-A)
10. CURB TRANSITION LENGTH IS DEPENDENT ON FLARE SLOPE

DETAIL 5: SIDEWALK RAMP WITH GRASS PARKWAY
(NOT TO SCALE)

Revision
By
Date
No.

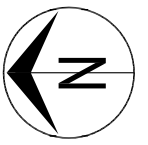
MCKEE STREET SIDEWALK
Detail Sheet

City of Columbia, Missouri
Department of Public Works

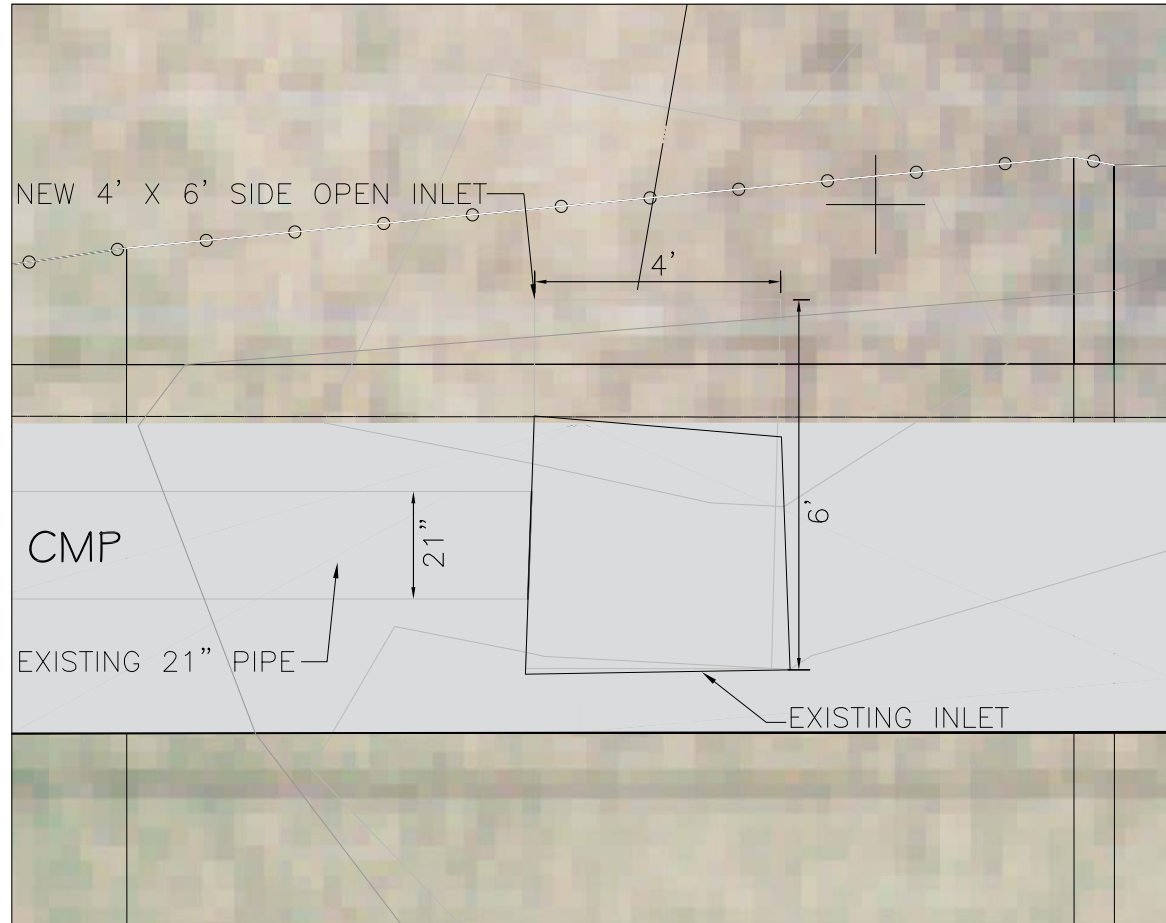
David Allen Nichols
Registered Professional Engineer
E-24212

File No.
Scale:
Date: MARCH 2019
Des. E.M.F.
Dwn. E.M.F.
Chk. A.A.A.

Sheet
1 of 2



No.	Date	By	Revision

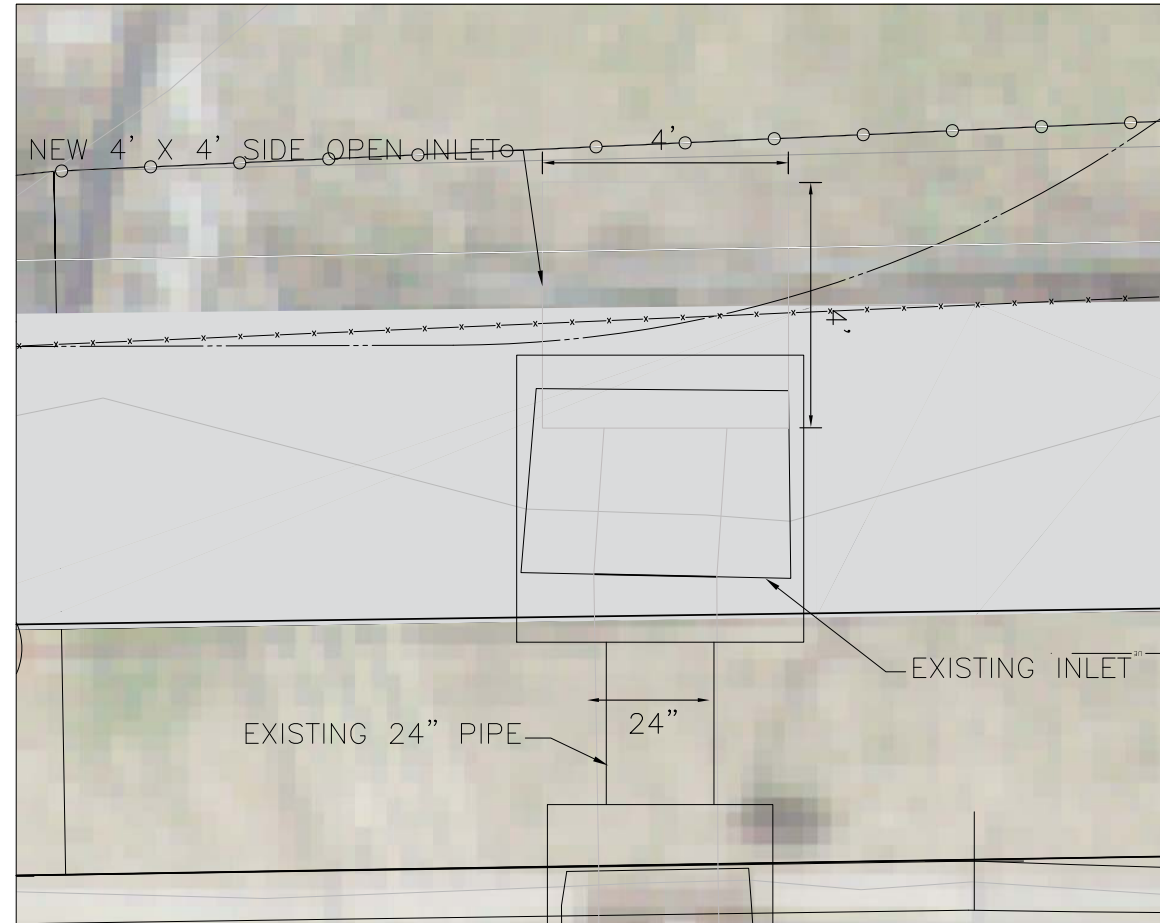


TOP OF INLET ELEVATION	794.0
SIDE OPENING FLOW LINE ELEVATION	792.7
PIPE FLOW LINE ELEVATION	790.45

NOTES:

1. REMOVE EXISTING BOX AND REPLACE WITH 4'X6' SIDE OPEN INLET
2. CONTRACTOR TO VERIFY ELEVATIONS AND DIMENSIONS. FIELD ADJUSTMENT MAY BE NECESSARY

DETAIL 6: INLET A INFORMATION
(NOT TO SCALE)



TOP OF INLET ELEVATION	804.4
SIDE OPENING FLOW LINE ELEVATION	803.1
PIPE FLOW LINE ELEVATION	800.6

NOTES:

1. REMOVE EXISTING BOX AND REPLACE WITH 4'X4' SIDE OPEN INLET
2. CONTRACTOR TO VERIFY ELEVATIONS AND DIMENSIONS. FIELD ADJUSTMENT MAY BE NECESSARY

DETAIL 7: INLET B INFORMATION
(NOT TO SCALE)

MCKEE STREET SIDEWALK
Detail Sheet

City of Columbia, Missouri
Department of Public Works

David Allen Nichols
Registered Professional Engineer
E-24212

File No.	.
Scale:	
Date:	MARCH 2019
Des.	E.M.F.
Dwn.	E.M.F.
Chk.	AAA.