


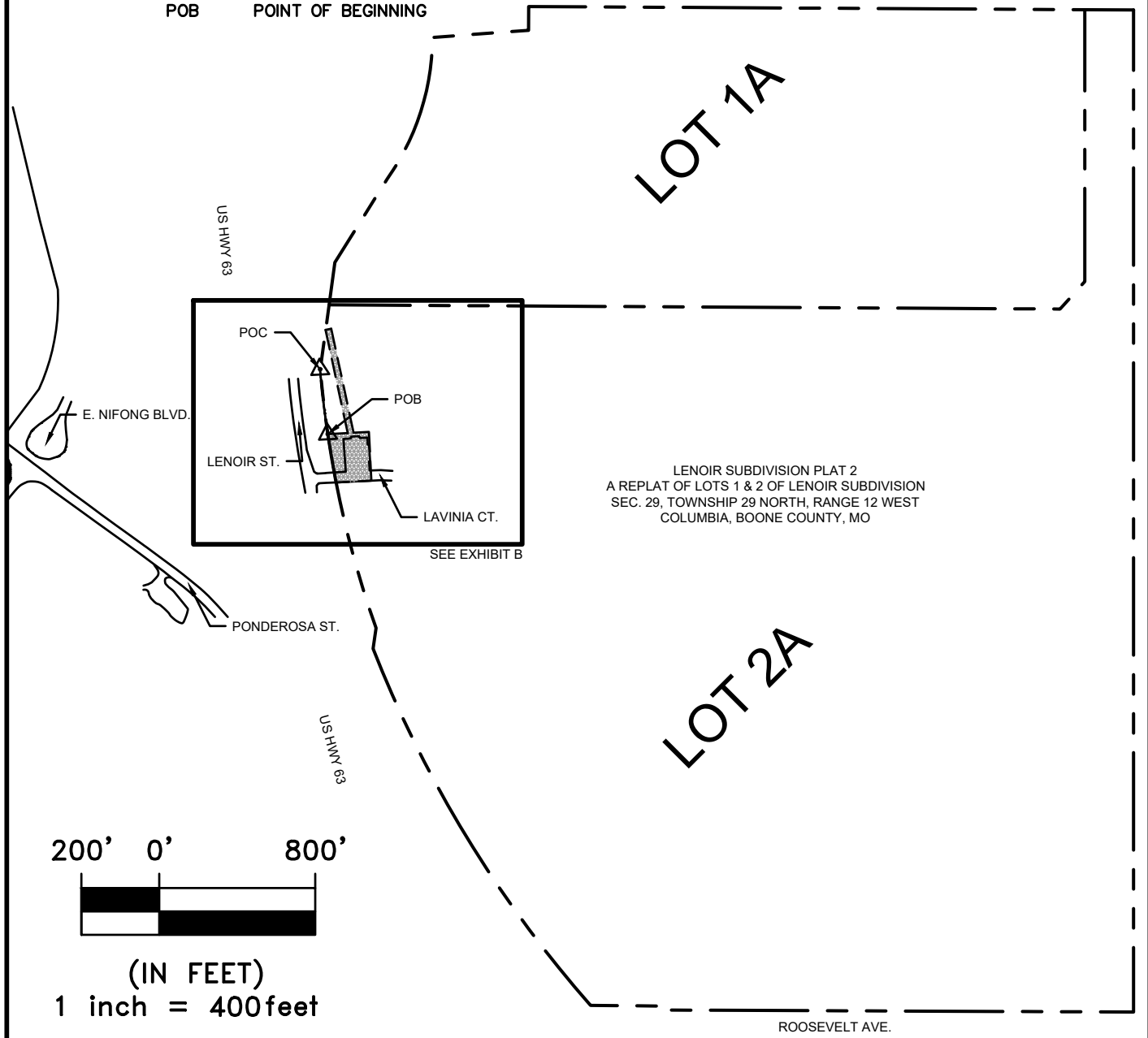



WATER UTILITY EASEMENT EXHIBIT

LEGEND

-  EASEMENT
-  PROPERTY LINE
-  RIGHT-OF-WAY LINE
- POC POINT OF COMMENCEMENT
- POB POINT OF BEGINNING



200' 0' 800'



(IN FEET)
1 inch = 400feet

<p>GONZALEZ COMPANIES, LLC 1750 SOUTH BRENTWOOD BLVD SUITE 700 ST. LOUIS, MO 63144 PHONE: (314) 961-1888 FAX: (314) 961-1814 WWW.GONZALEZCOS.COM</p>	<p>TITLE: EASEMENT EXHIBIT LENOIR SUBDIVISION, LOT 2A COLUMBIA, BOONE COUNTY, MO</p>	<p>PROJECT NO. 21-209</p>	<p>DATE: 2/17/2022</p>
		<p>SHEET: 1 OF 2</p>	<p>EXHIBIT: A</p>

WATER UTILITY EASEMENT EXHIBIT



LEGEND

- EASEMENT
- PROPERTY LINE
- RIGHT-OF-WAY LINE
- POC POINT OF COMMENCEMENT
- POB POINT OF BEGINNING

POC
STA 215+70.36

S 80°48'37" W 15.00'

N 91°125' W 272.83'
S 91°125' E 270.40'

LOT 2A

LENOIR SUBDIVISION PLAT 2
A REPLAT OF LOTS 1 & 2 OF LENOIR SUBDIVISION
SEC. 29, TOWNSHIP 29 NORTH, RANGE 12 WEST
COLUMBIA, BOONE COUNTY, MO

R=2390.98'
L=67.29'
CHD=81°15'E
S03°55'15"E

WEST 51.15' WEST 39.33'

POB

R=2557.23'
L=208.01'
CHD=06°00'
S08°41'57"E

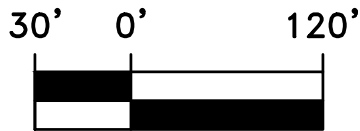
N 0°00'02" W 125.14'

LAVINIA CT.

EAST 91.00'

US HWY 63

LENOIR ST.



(IN FEET)
1 inch = 60 feet

<p>GONZALEZ COMPANIES, LLC 1750 SOUTH BRENTWOOD BLVD SUITE 700 ST. LOUIS, MO 63144 PHONE: (314) 961-1888 FAX: (314) 961-1814 WWW.GONZALEZCOS.COM</p>	<p>TITLE: EASEMENT EXHIBIT LENOIR SUBDIVISION, LOT 2A COLUMBIA, BOONE COUNTY, MO</p>	<p>PROJECT NO. 21-209</p>	<p>DATE: 2/17/2022</p>
		<p>SHEET: 2 OF 2</p>	<p>EXHIBIT: B</p>