



# Case # 166-2023 - SW Corner E. Nifong Blvd & State Farm Pkwy Rezoning



Parcel Data Source: Boone County Assessor  
Created by The City of Columbia - Community Development Department

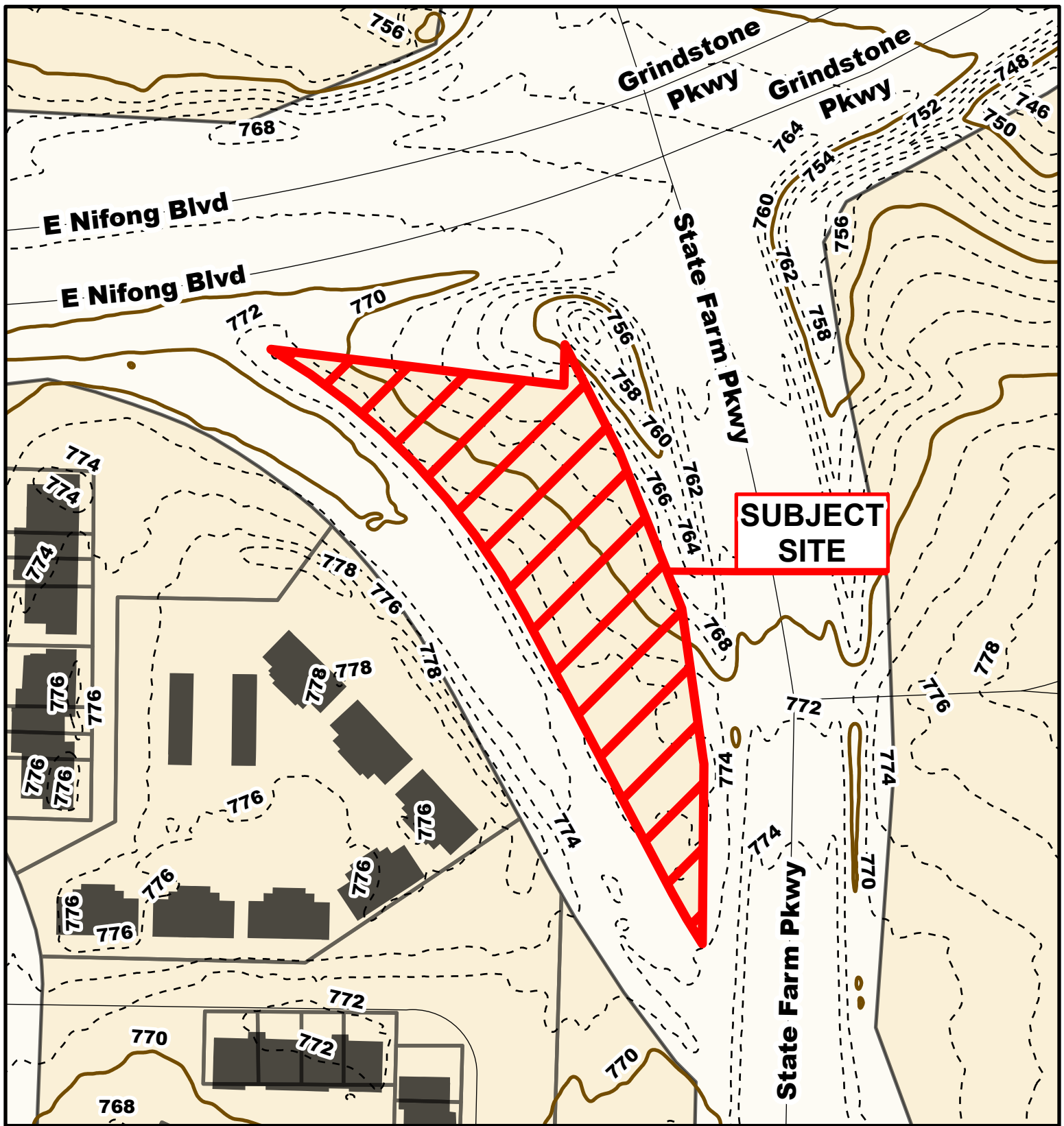
City Zoning  Parcels



0 100 200 Feet

2022 Imagery: NearMap



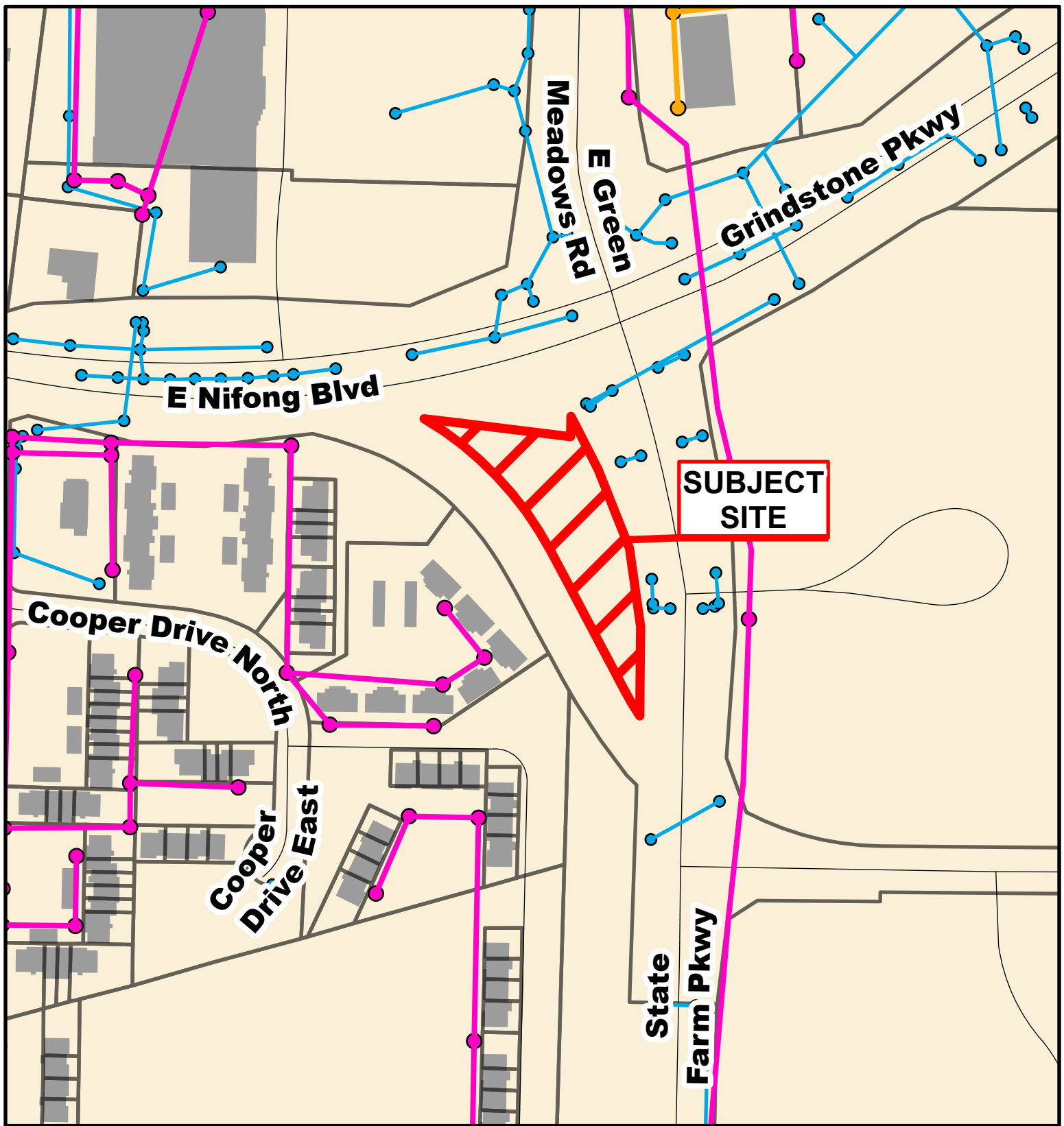


**Case # 166-2023 - SW Corner E. Nifong Blvd & State Farm Pkwy  
Rezoning**



— 10 Foot Contour Lines    ▭ Parcels  
- - - 2 Foot Contour Lines





# **Case # 166-2023 - SW Corner E. Nifong Blvd & State Farm Pkwy** **Rezoning**



- City Sanitary Line
- City Storm Lines
- Private Sanitary Line
- Parcels

