

Case # 25-2025 - 1591 E. Prathersville Road

Permanent Zoning

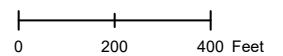


City Zoning
 Parcels

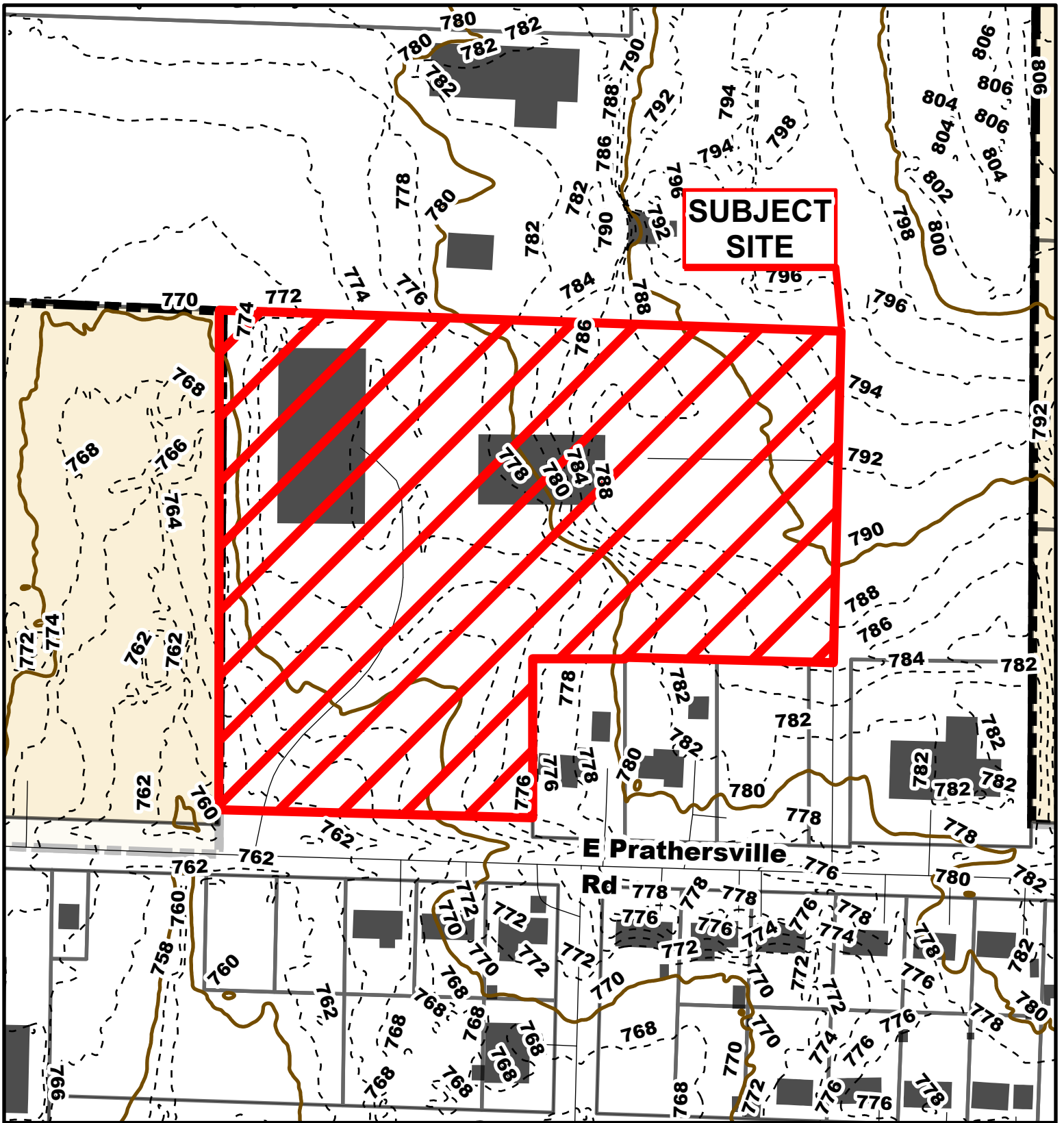
Parcel Data Source: Boone County Assessor

Created by The City of Columbia - Community Development Department

2022 Imagery: NearMap



Source: Nearmap. <https://www.nearmap.com/us/en/>

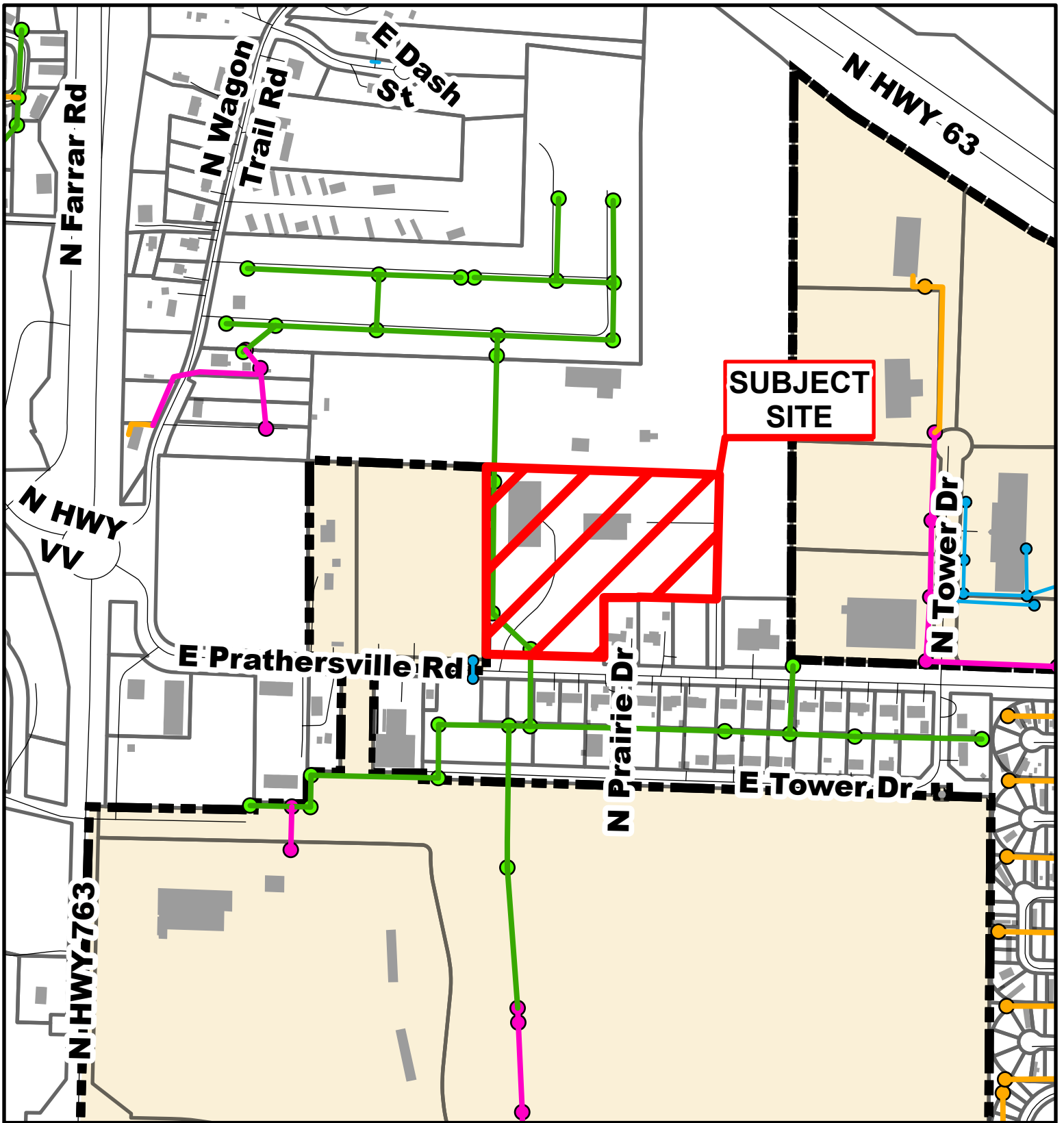


Case # 25-2025 - 1591 E. Prathersville Road
Permanent Zoning



- 10 Foot Contour Lines
- 2 Foot Contour Lines
- Parcels





Case # 25-2025 - 1591 E. Prathersville Road

Permanent Zoning



- City Sanitary Line
- BCRSD Sanitary Line
- Private Sanitary Line
- City Storm Lines
- Parcels

