

#17-172: Fred Overton Development, Inc. & Andrews ET AL Annexation & Permanent Zoning

	Roads		Boone County Zoning
	City Zoning		Columbia City Limit
	Parcels		CityViewparcels

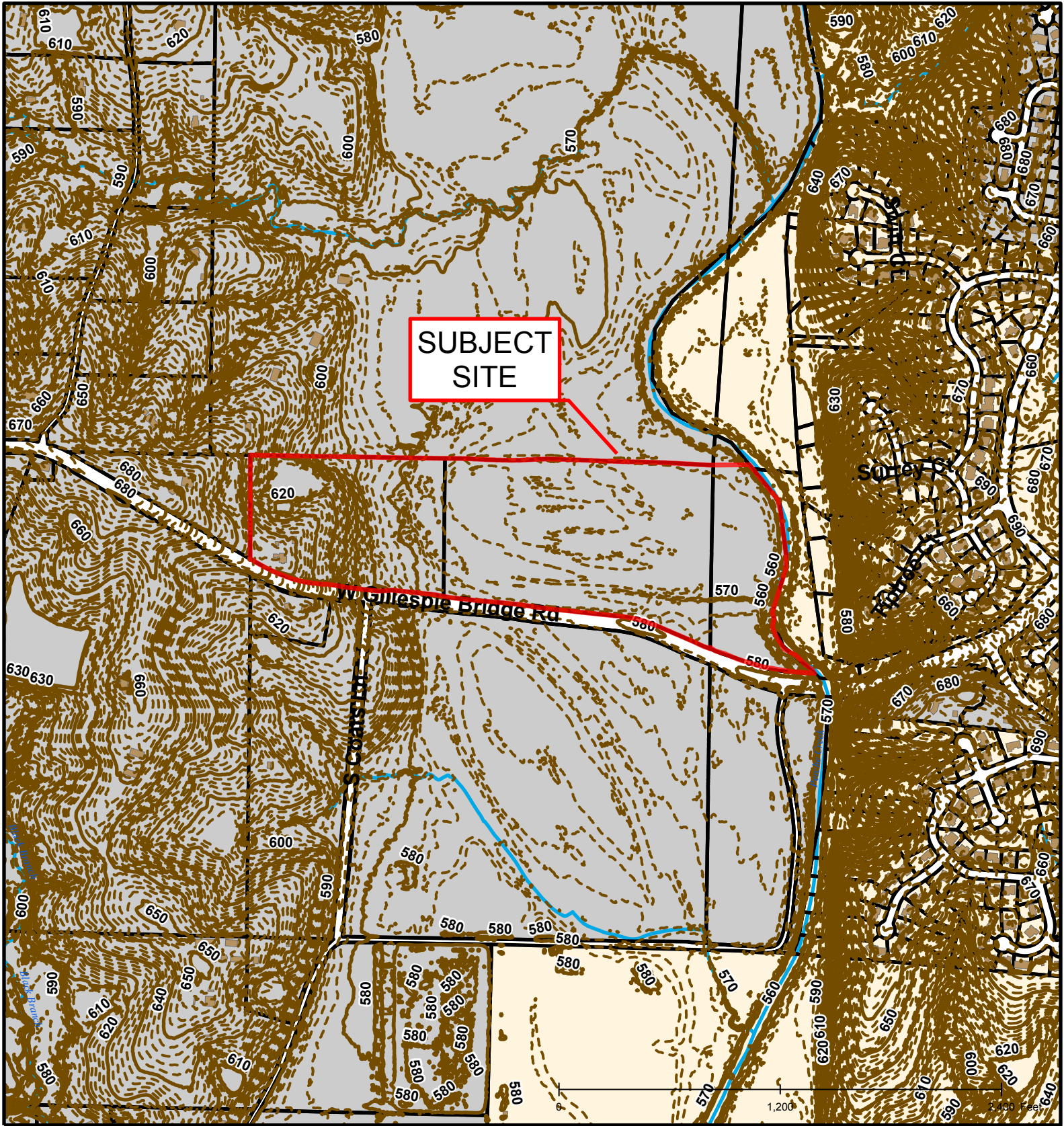


Created by The City of Columbia - Community Development Department

Parcel Data Source: Boone County Assessor

2015 Imagery: Boone County Assessor's Office

Hillshade Data: Boone County GIS Office



SUBJECT SITE

#17-172: Fred Overton Development, Inc. & Andrews ET AL Annexation & Permanent Zoning

Roads	Stream	Boone County Zoning
Building Footprint	Bodies of Water	City Zoning
Parcels		

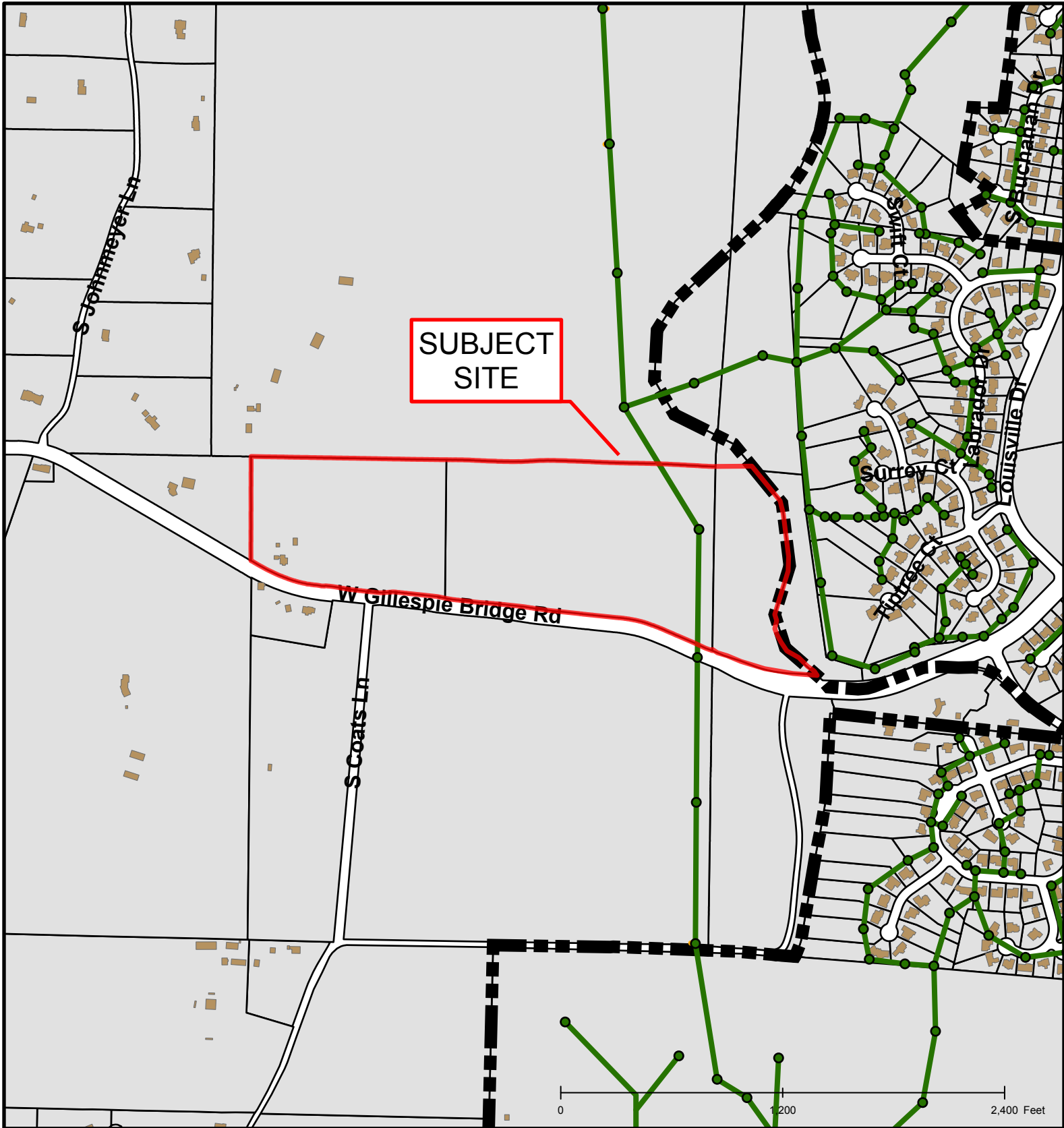


Created by The City of Columbia - Community Development Department

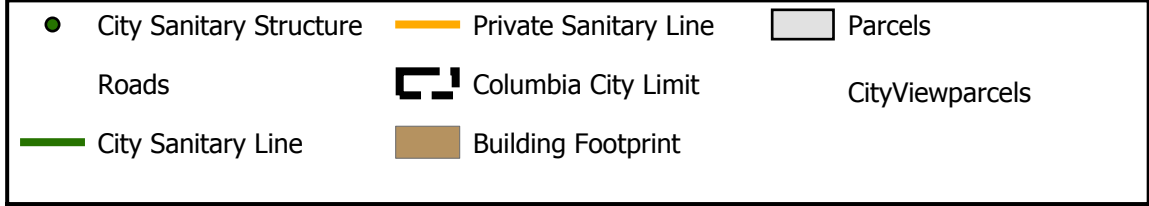
Parcel Data Source: Boone County Assessor

2015 Imagery: Boone County Assessor's Office

Hillshade Data: Boone County GIS Office



#17-172: Fred Overton Development, Inc. & Andrews ET AL Annexation & Permanent Zoning



Created by The City of Columbia - Community Development Department

Parcel Data Source: Boone County Assessor

2015 Imagery: Boone County Assessor's Office

Hillshade Data: Boone County GIS Office