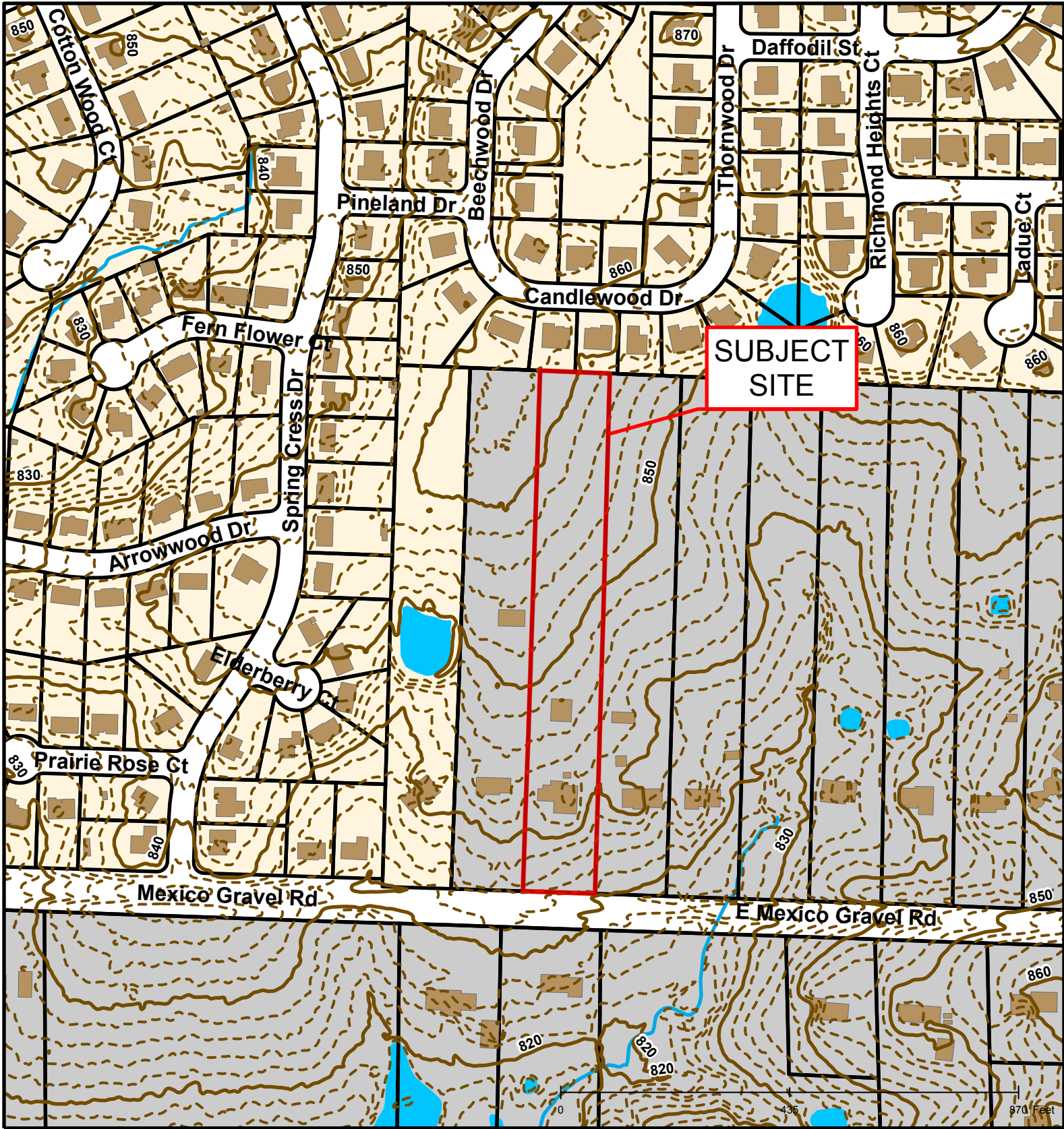


#18-131: Lewis & Smarr Subdivision Lot 3 Annexation & Zoning



 Roads	 Boone County Zoning
 City Zoning	 Columbia City Limit
 Parcels	 CityViewparcels





SUBJECT SITE

#18-131: Lewis & Smarr Subdivision Lot 3 Annexation & Zoning

Roads	--- 2 Foot Contour Lines	■ Bodies of Water
■ Building Footprint	□ Parcels	■ City Zoning
— 10 Foot Contour Lines	— Stream	■ Boone County Zoning

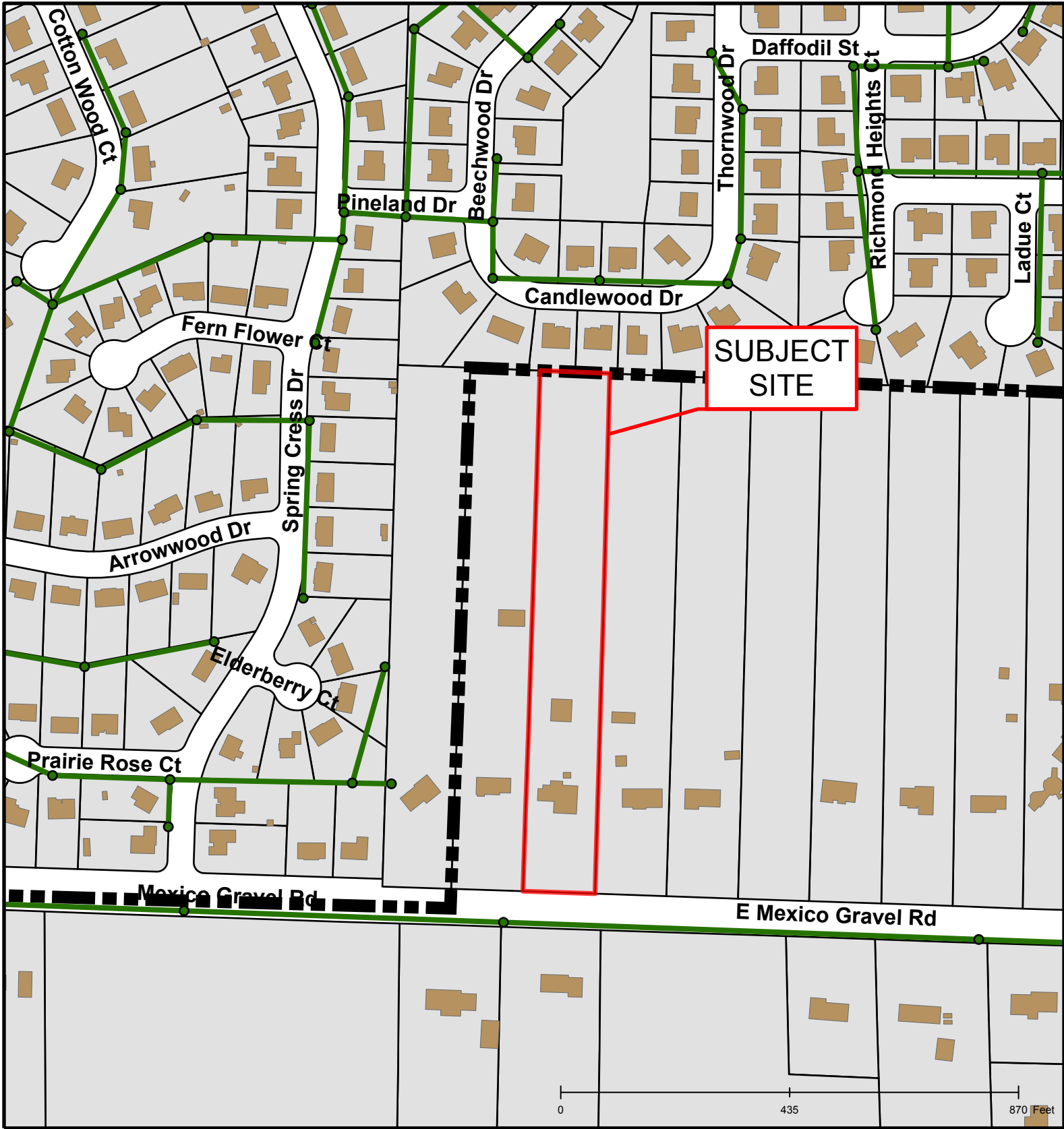


Created by The City of Columbia - Community Development Department

Parcel Data Source: Boone County Assessor

2015 Imagery: Boone County Assessor's Office

Hillshade Data: Boone County GIS Office



#18-131: Lewis & Smarr Subdivision Lot 3 Annexation & Zoning



City Sanitary Structure	Columbia City Limit
Roads	Building Footprint
City Sanitary Line	Parcels

