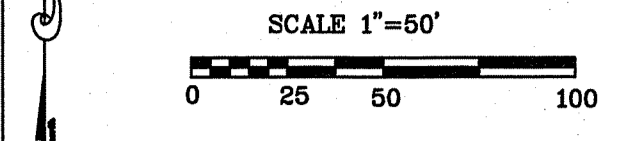
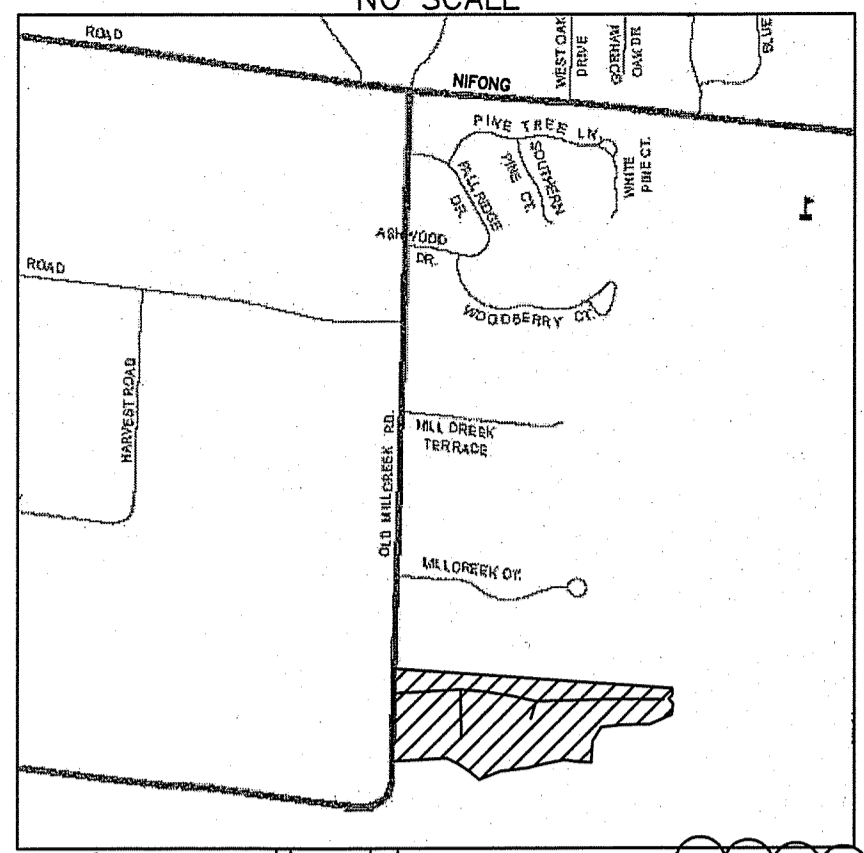


# LAND ANALYSIS MAP

SITE LOCATION MAP  
NO SCALE



REFERENCE BEARING: GRID NORTH AS PER GPS OBSERVATION

NOTES

DESCRIPTION:  
A TRACT LOCATED IN THE SOUTHWEST QUARTER OF SECTION 34, TOWNSHIP 48 NORTH, RANGE 13 WEST, CITY OF COLUMBIA, BOONE COUNTY, MISSOURI, AND BEING THE TRACT DESCRIBED BY THE DEED IN BOOK 3227 PAGE 5 AND THE TRACT DESCRIBED BY THE DEED IN BOOK 3227 PAGE 6 BOTH OF THE BOONE COUNTY RECORDS AND CONTAINING 15.63 ACRES.

OWNER/DEVELOPER  
ELIAS AND ELIAS LLC  
2101 WEST BROADWAY  
COLUMBIA, MO 65203

THIS TRACT DOES NOT CONTAIN ANY SENSITIVE AREAS AS DEFINED BY THE FUTURE LAND USE MAP OF THE CITY'S COMPREHENSIVE PLAN

**BRUSH AND ASSOCIATES, INC.**  
CONSULTING ENGINEERS AND LAND SURVEYORS  
506 NICHOLS STREET, SUITE A  
COLUMBIA, MISSOURI 65201  
PHONE: (573) 442-3110 FAX: (573) 442-4851  
www.brushsurvey.com  
LSC 321 ENC 001450

J. DANIEL BRUSH  
DATE: EN 28665

## MILL CREEK MEADOWS SUBDIVISION PLAT

Drawn: JOB NUMBER  
8293

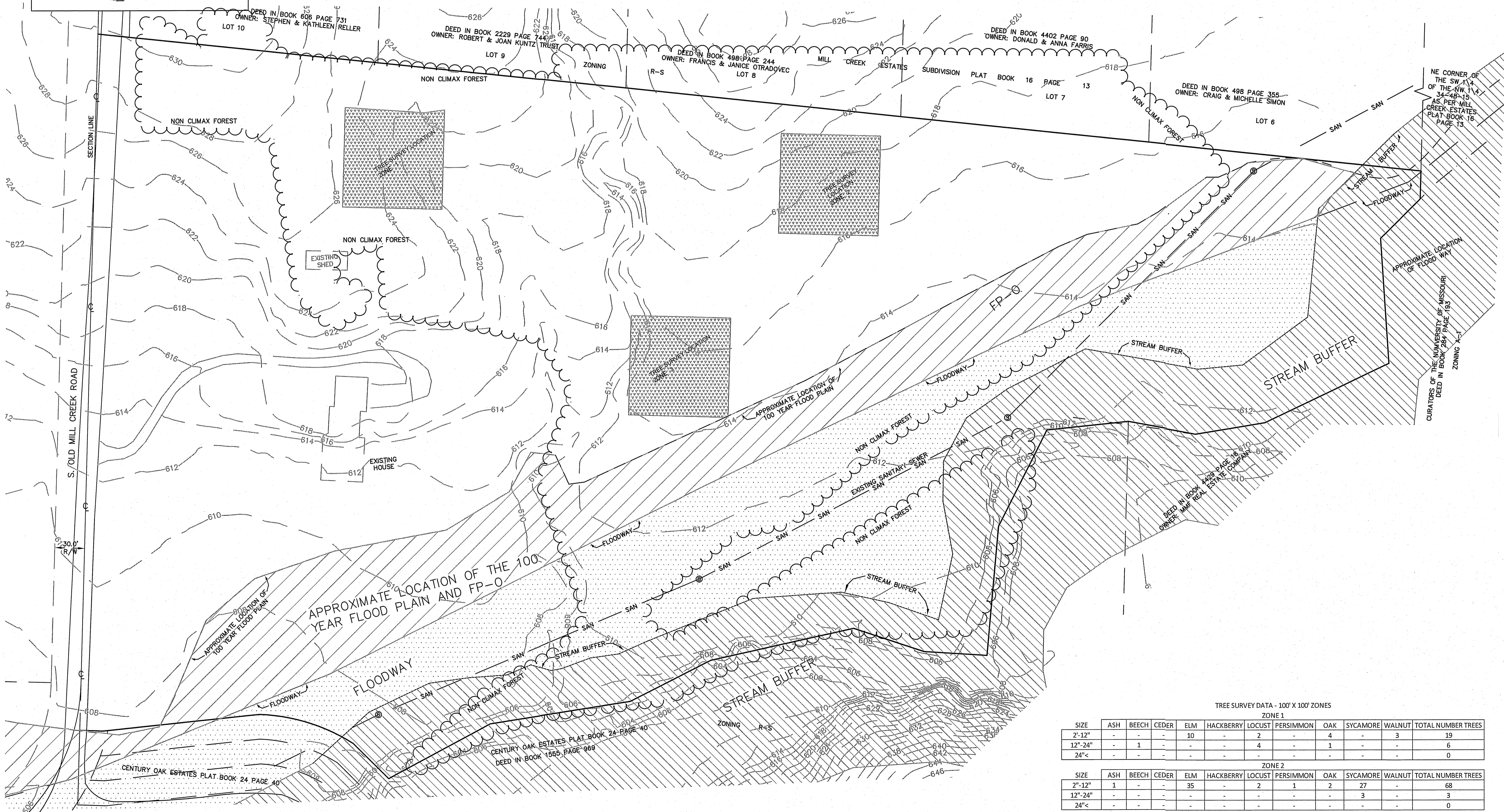
Checked: CAD File Name (Number):

Drawing Title:

No. Revisions: Date:

Submission Date: Drawing Number:

Plot Date:  
4/12/17



TREE SURVEY DATA - 100' X 100' ZONES

SIZE	ZONE 1										
	ASH	BEECH	CEDER	ELM	HACKBERRY	LOCUST	PERSIMMON	OAK	SYCAMORE	WALNUT	TOTAL NUMBER TREES
2"-12"	-	-	-	10	-	2	-	4	-	3	19
12"-24"	-	1	-	-	-	4	-	1	-	-	6
24"<	-	-	-	-	-	-	-	-	-	-	0

SIZE	ZONE 2										
	ASH	BEECH	CEDER	ELM	HACKBERRY	LOCUST	PERSIMMON	OAK	SYCAMORE	WALNUT	TOTAL NUMBER TREES
2"-12"	1	-	-	35	-	2	1	2	27	-	68
12"-24"	-	-	-	-	-	-	-	-	3	-	3
24"<	-	-	-	-	-	-	-	-	-	-	0

SIZE	ZONE 3										
	ASH	BEECH	CEDER	ELM	HACKBERRY	LOCUST	PERSIMMON	OAK	SYCAMORE	WALNUT	TOTAL NUMBER TREES
2"-12"	2	-	1	2	2	10	-	13	17	-	47
12"-24"	-	-	-	-	-	-	-	1	1	-	2
24"<	-	-	-	-	-	-	-	-	-	-	0

PERCENTAGE OF TREE TYPE											TOTAL NUMBER TREES
% OF TOTAL	2.1%	0.7%	0.7%	32.4%	1.4%	12.4%	0.7%	14.5%	33.1%	2.1%	145