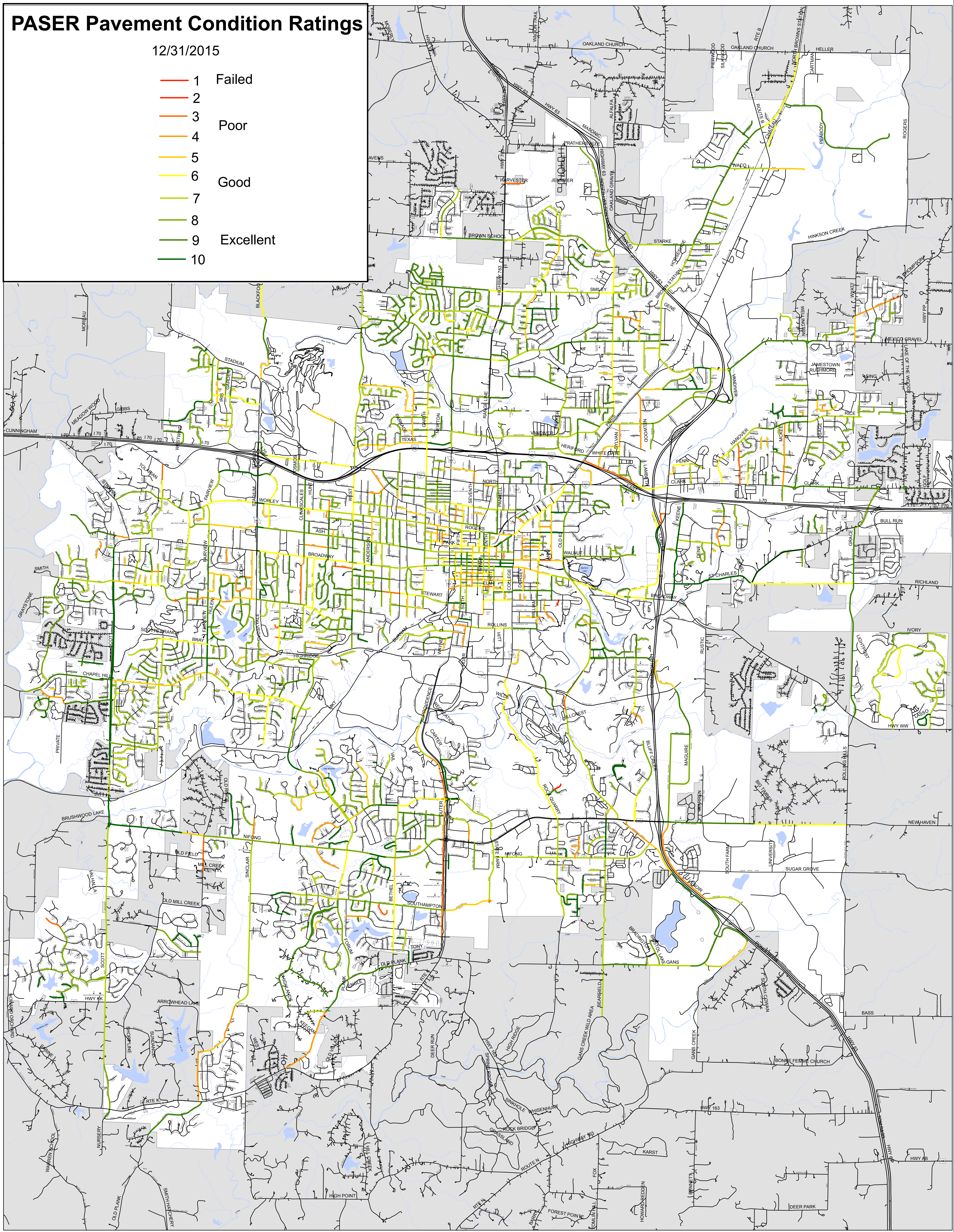


PASER Pavement Condition Ratings

12/31/2015

- 1 Failed
- 2
- 3 Poor
- 4
- 5
- 6 Good
- 7
- 8
- 9 Excellent
- 10



Legend

- Road_Shields_Poly
- Schools
- Trails
- Railroad
- Interstate or US Highways
- State Road
- Ramp
- Regular
- robo
- regular
- Private, Not Named
- Private, Named
- City Limit
- County_Boundaries

Scale 1" = 2250'



PASER Condition Rating
CITY of COLUMBIA, MISSOURI