

Appendix B: Trial Maps with Detail and Narrative Summary

All three maps maintain incumbent Councilpersons in the wards they represent, and the addresses of candidates for 3rd and 4th wards in the April election remain in those wards.

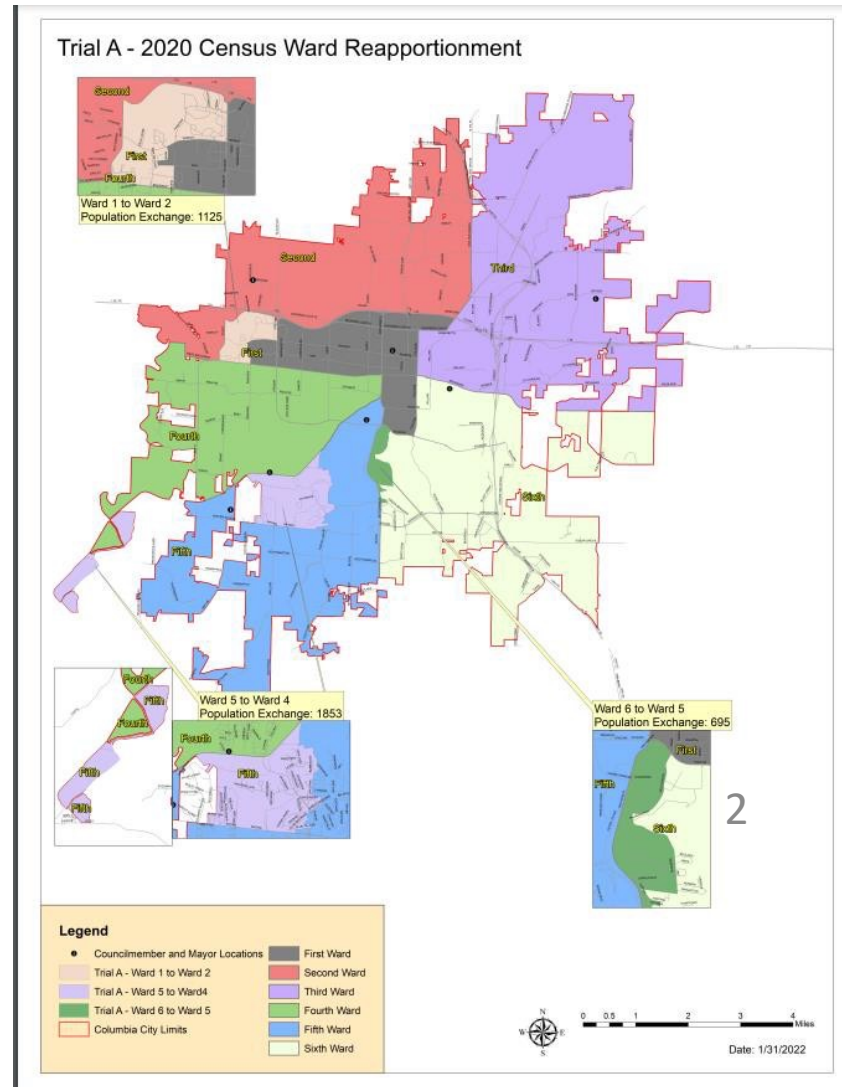
Maps are not final; the committee may revise maps in response to public input. Staff will present some material at the hearing showing some possible alternatives or variations on the three maps.

Transfers/exchanges

- 1,125 from 1st Ward to 2nd Ward
- 1,853 from 5th Ward to 4th Ward
- 695 from 6th Ward to 5th Ward
- No change to 3rd Ward

Resulting populations

1 st Ward	21,033
2 nd Ward	20,814
3 rd Ward	21,052
4 th Ward	21,051
5 th Ward	21,049
6 th Ward	21,255
Total	126,254



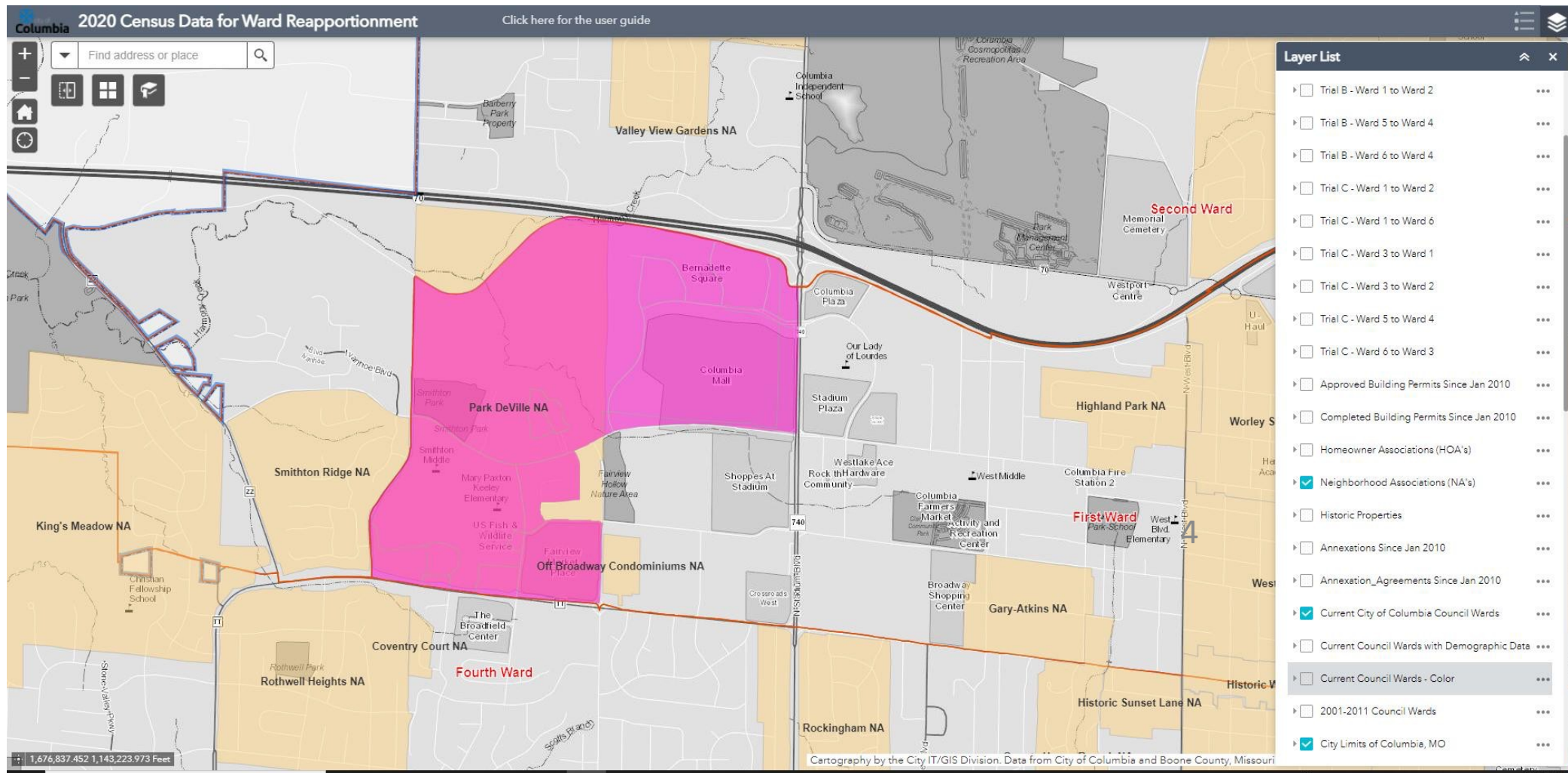
Trial A

This map transfers a total of 3,673 people to a different ward. The percentage deviation of the difference between the largest and smallest wards is 2.0 percent. (Largest ward population minus smallest ward population divided by average ward population).

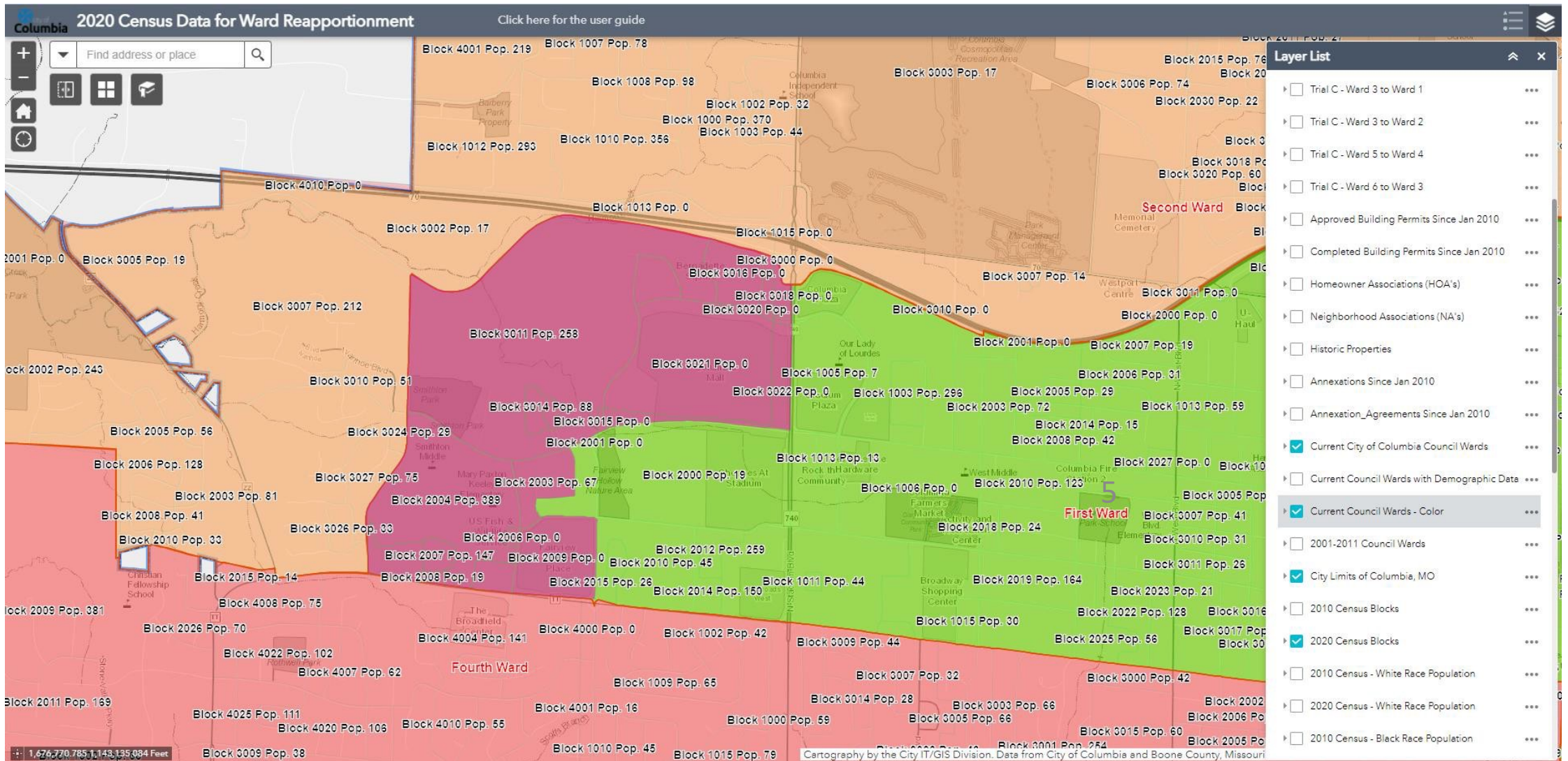
Trial A reassigns three areas to new wards:

1. An area west of Stadium Boulevard to Silvey Road shifts 1,125 from the 1st Ward to 2nd Ward. This area formerly was in 2nd Ward and it widens the connection to 2nd Ward territory south of I-70.
2. An area between the MKT Trail and Nifong Boulevard from Country Woods Subdivision to a boundary east of Forum Boulevard in the Lake Woodrail area shifts 1,853 from 5th Ward to 4th Ward. This population is approximately the amount of population needed by 4th Ward to achieve an average size.
3. An area between Stadium Boulevard and Green Meadows Road east of Providence Road shifts 695 people from 6th Ward to 5th Ward. This transfer reduces the majority of the excess of population in 6th ward and offsets the large transfer of population from 5th to 4th Ward.

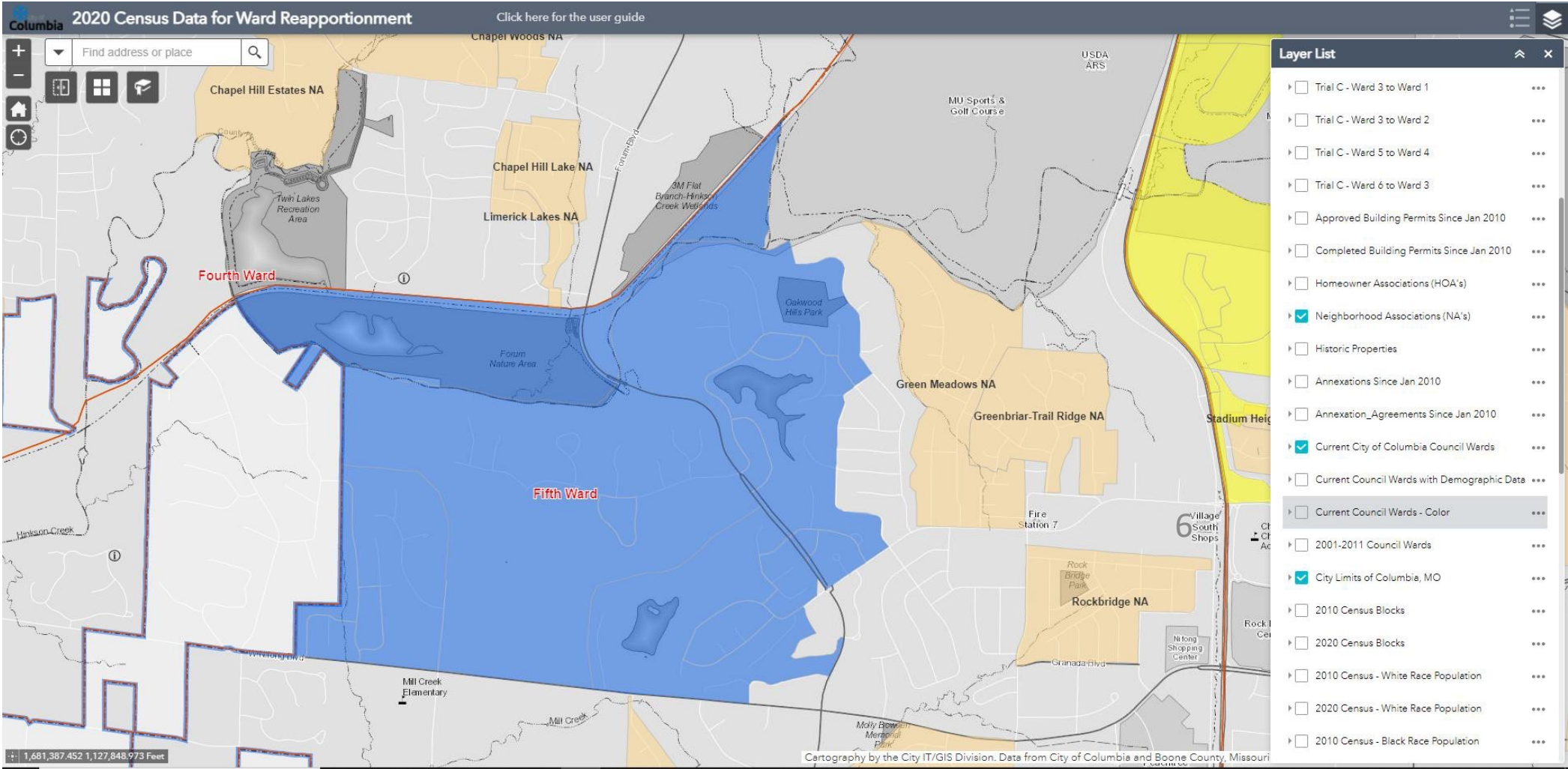
Trial A (and B) 1st to 2nd w/ neighborhoods



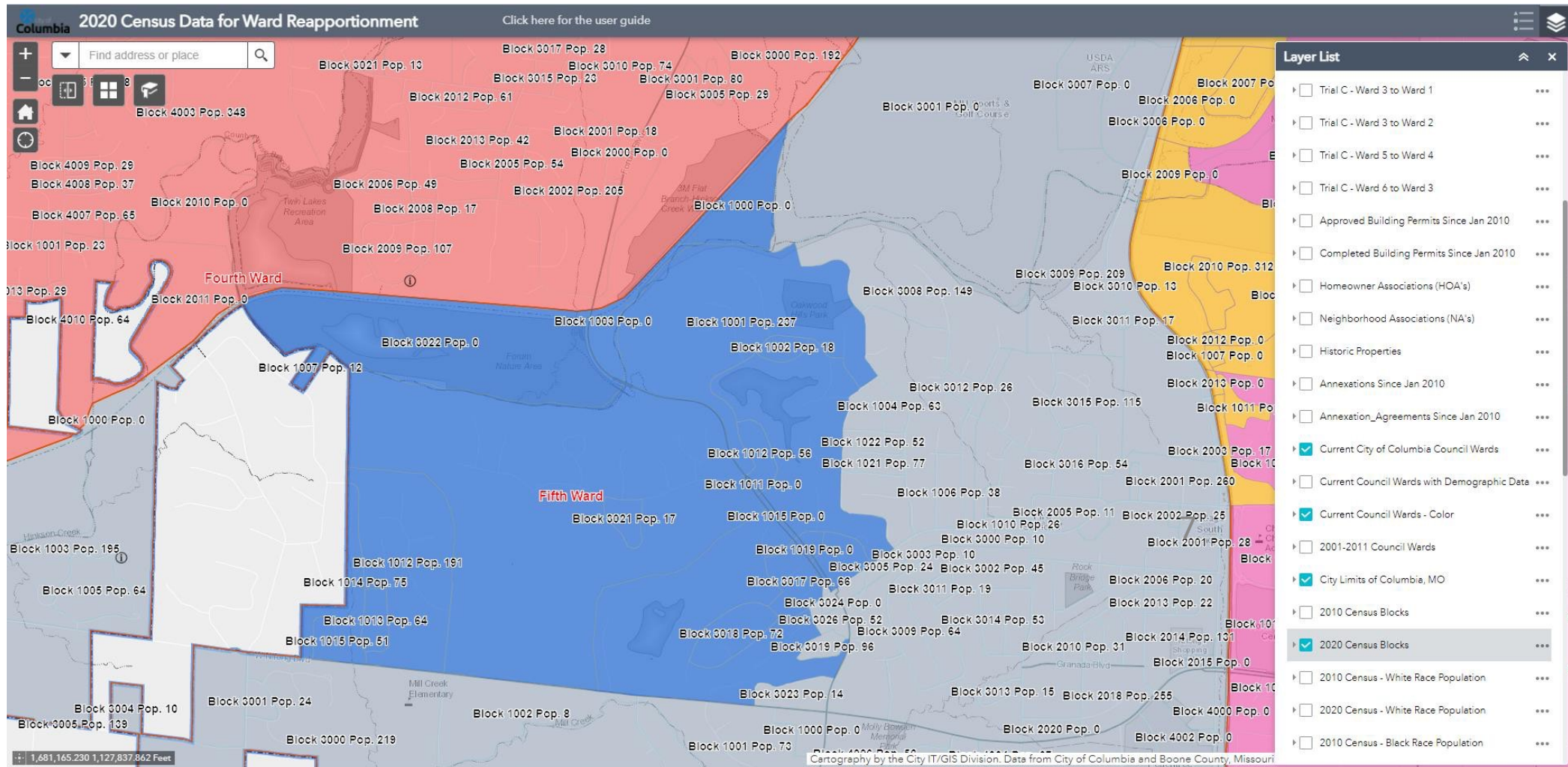
Trial A 1st to 2nd w/ blocks



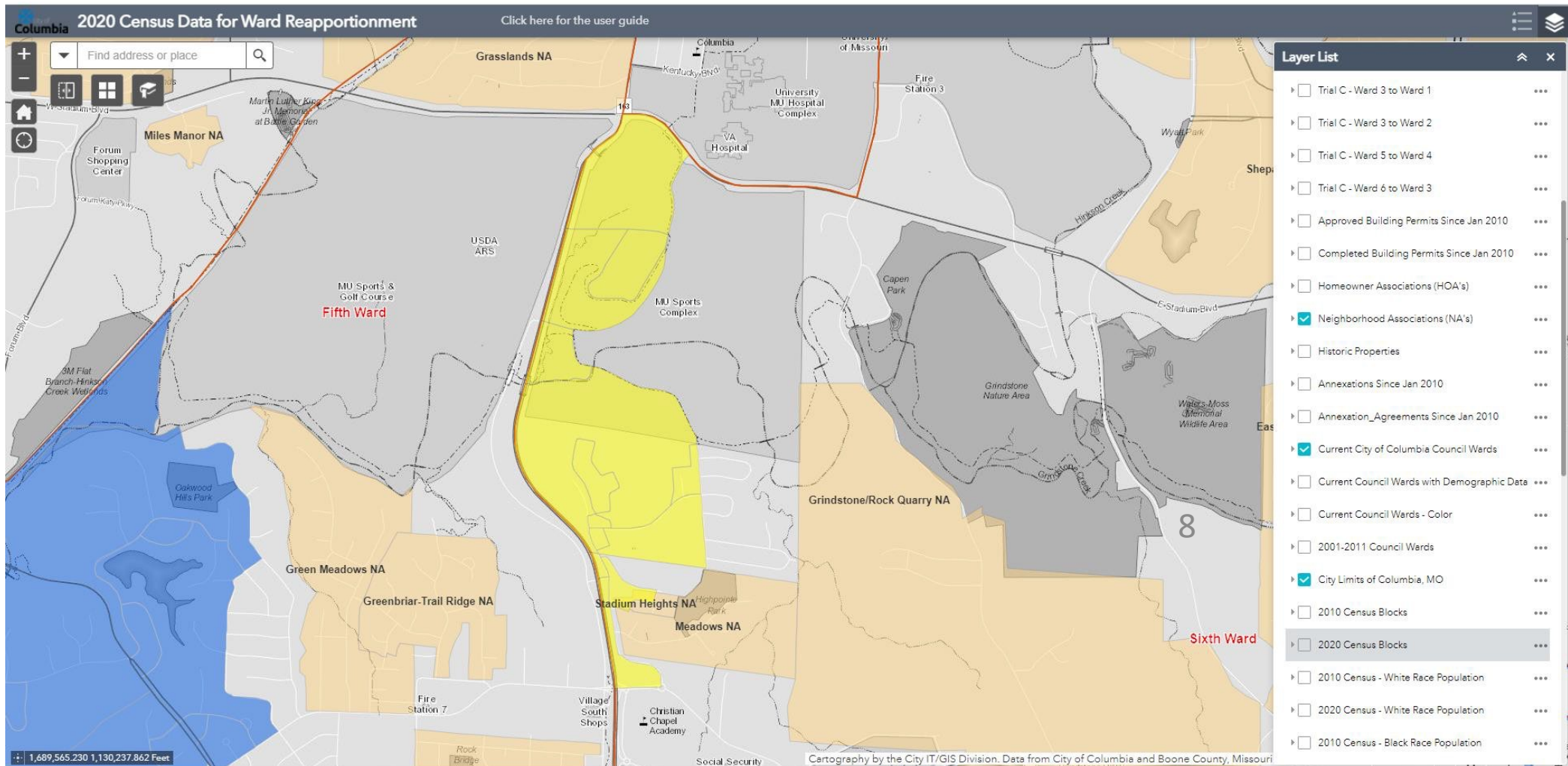
Trial A (and C) 5th to 4th w/ neighborhoods



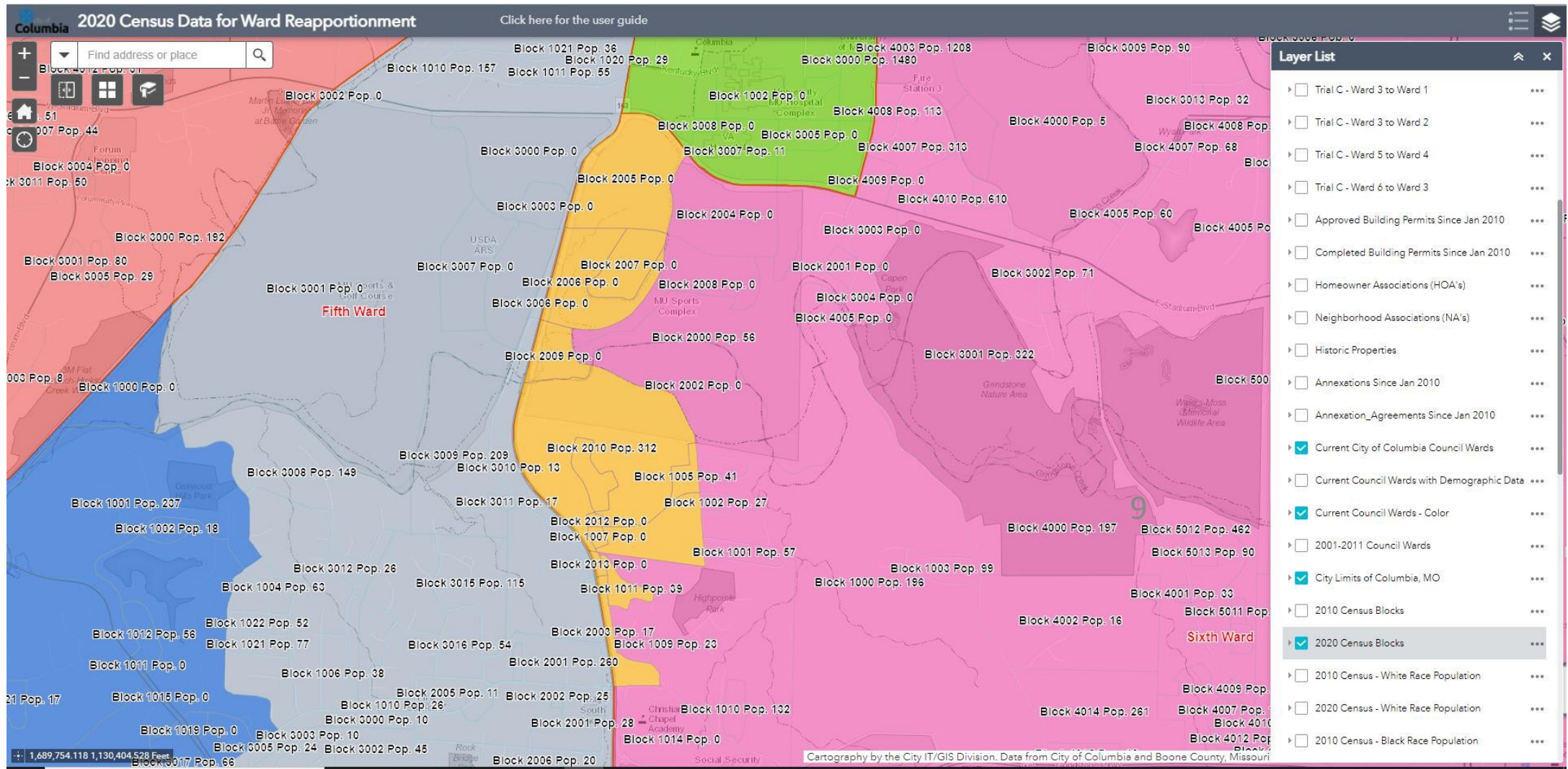
Trial A (and C) 5th to 4th w/ blocks

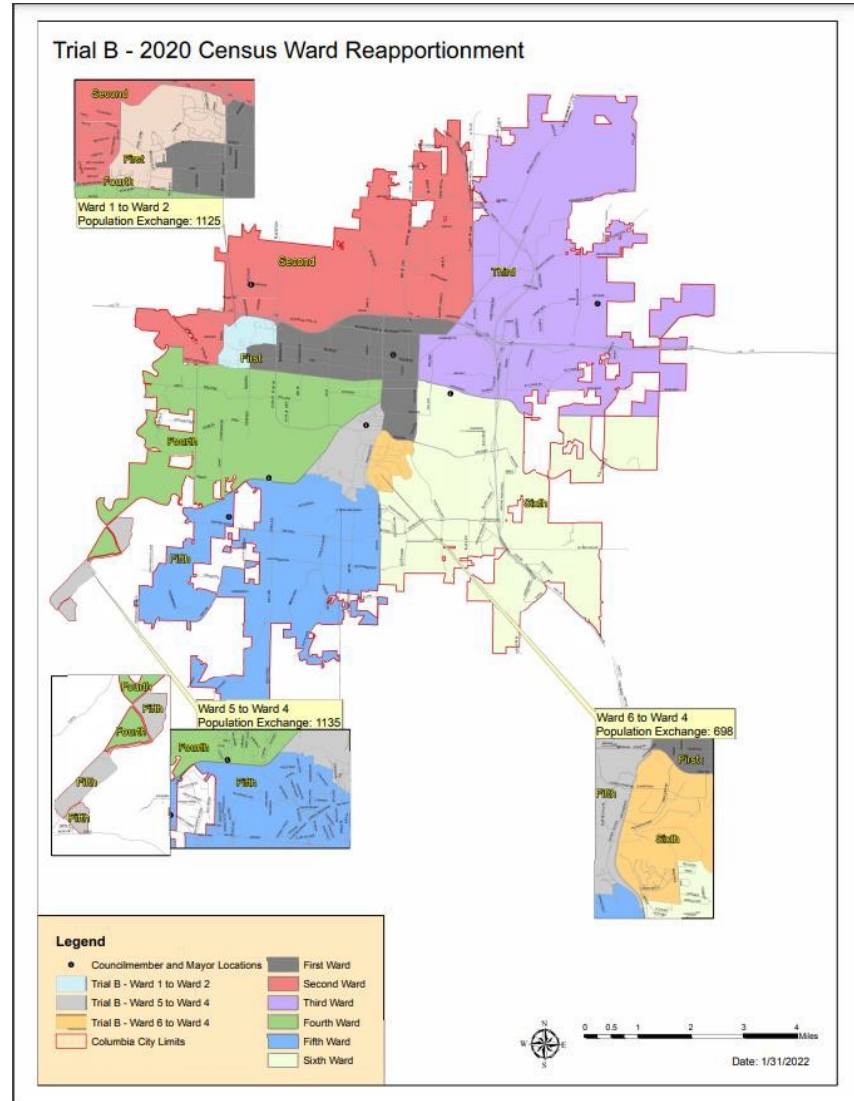


Trial A 6th to 5th w/ neighborhoods



Trial A 6th to 5th w/ blocks





Transfers/exchanges

- 1,225 from 1st Ward to 2nd Ward
- 1,135 from 5th Ward to 4th Ward
- 698 from 6th Ward to 4th Ward
- No change to 3rd Ward

Resulting populations

1 st Ward	21,033
2 nd Ward	20,814
3 rd Ward	21,052
4 th Ward	21,031
5 th Ward	21,072
6 th Ward	21,252
Total	126,254

10

Trial B

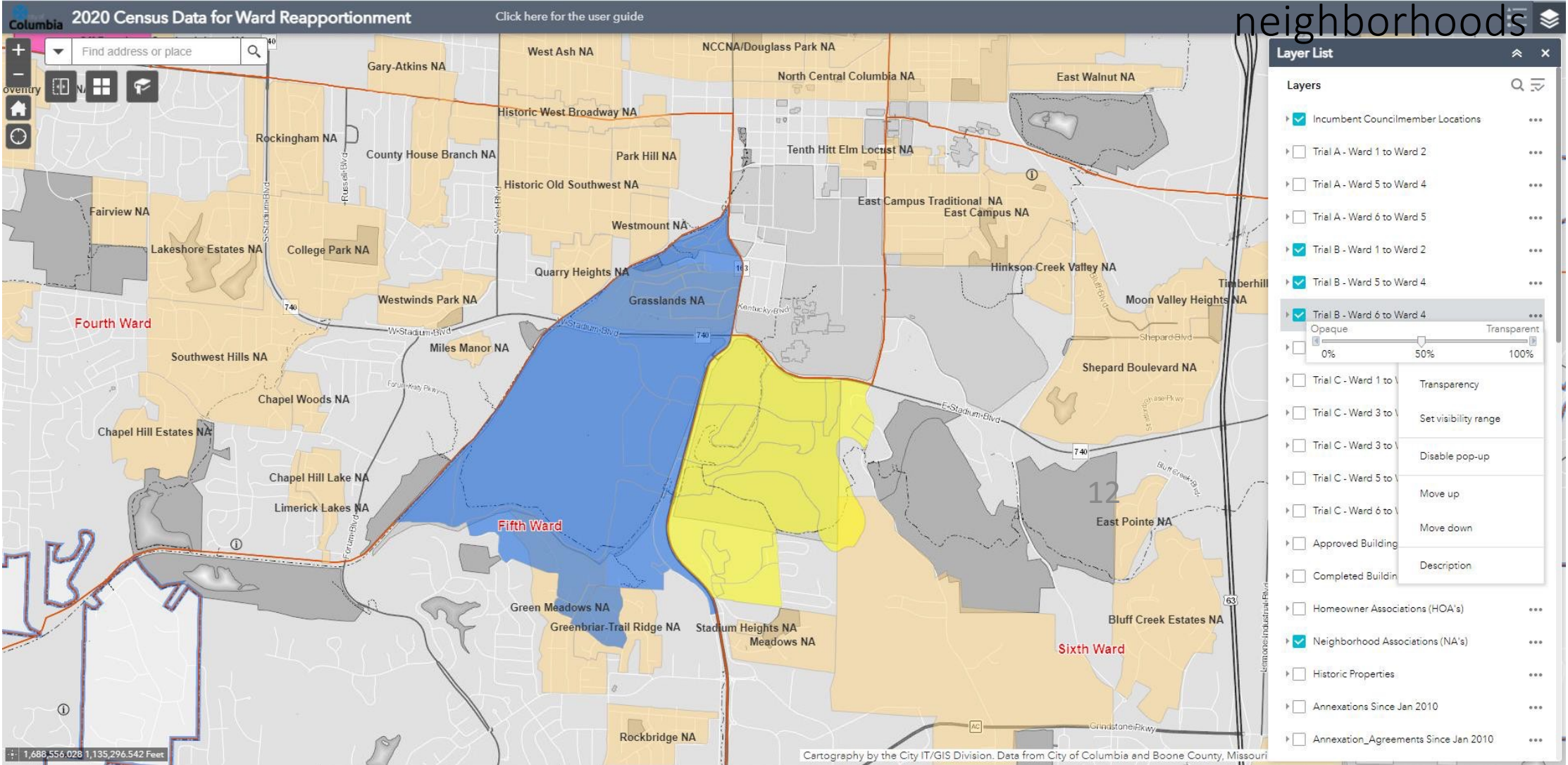
This map transfers 2,958 people to a different ward. The percentage deviation of the difference between the largest and smallest wards is 2.0 percent.

Trial B reassigns three areas to new wards:

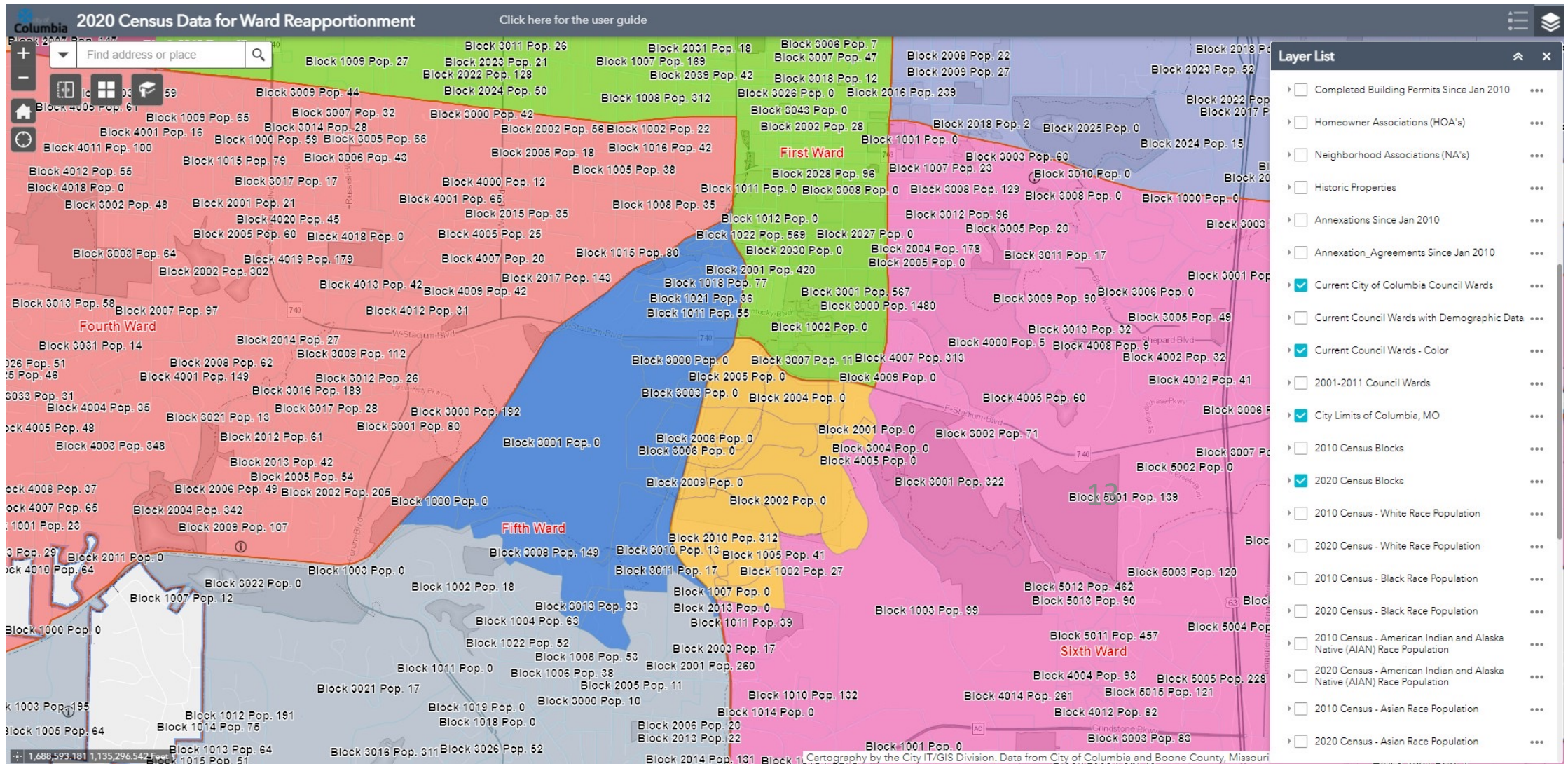
1. The same area as in Trial A, between Stadium and Silvey is included in Trial B (transfer of 1,125 people). Transferring an area from other sections of 1st Ward to 2nd Ward was difficult to do without dividing neighborhood associations.
2. The northeast area of 5th Ward, from the MKT Trail to Providence Road transfers 1,135 from the 5th Ward to the 4th Ward. The south boundary runs along an irregular line formed by the census blocks (see detail on the map).
3. An area east of Providence Road, south of Stadium Boulevard, transfers 698 people from 6th Ward to 4th Ward. The east boundary is an irregular line following census blocks. In combination with area B.2 above, this transfer of population to 4th Ward from the combination of 5th and 6th Ward areas provides 1,833 people, approximately the number of people needed to increase 4th Ward to the average population size.

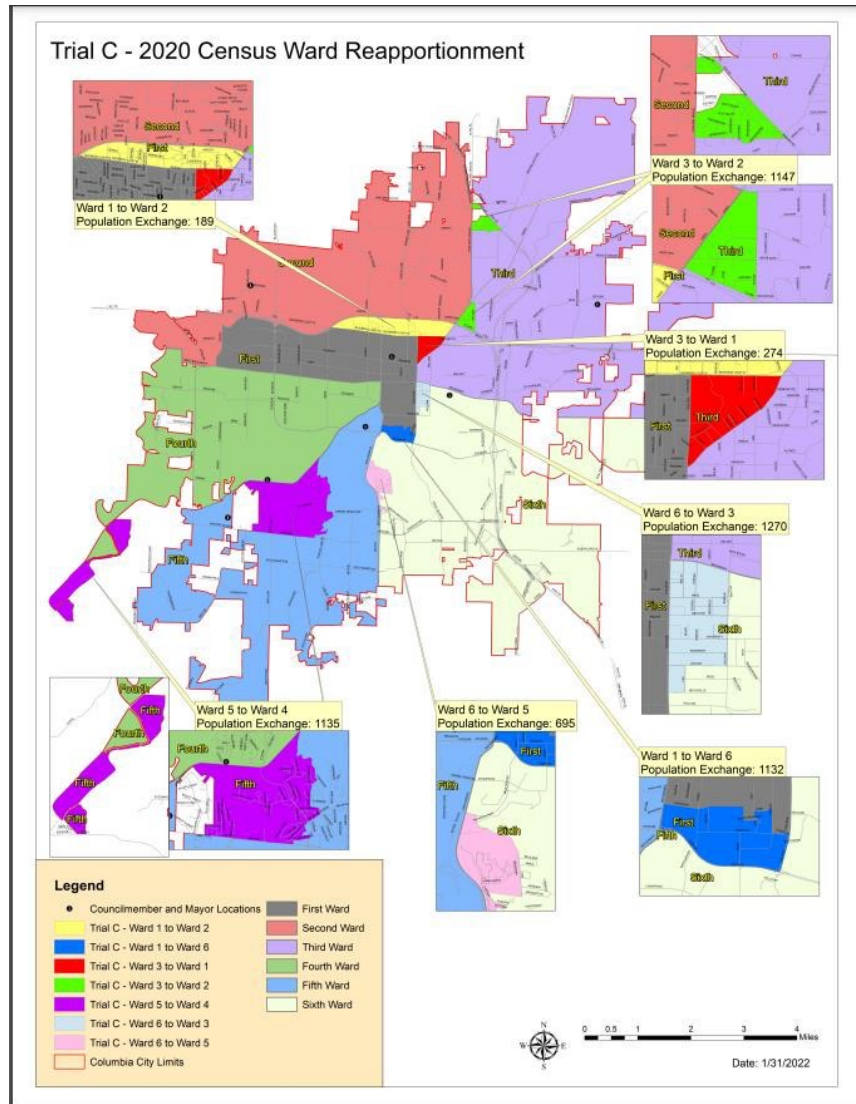
Trial B 5th and 6th to 4th w/

neighborhoods



Trial B 5th and 6th to 4th w/ blocks





Transfers/exchanges

- 1,132 from 1st Ward to 6th Ward
- 189 from 1st Ward to 2nd Ward
- 274 from 3rd Ward to 1st Ward
- 1,147 from 3rd Ward to 2nd Ward
- 1,270 from 6th Ward to 3rd Ward
- 1,853 from 5th Ward to 4th Ward
- 695 from 6th Ward to 5th Ward

Resulting populations

1 st Ward	21,111
2 nd Ward	21,025
3 rd Ward	20,901
4 th Ward	21,051
5 th Ward	21,049
6 th Ward	21,117
Total	126,254

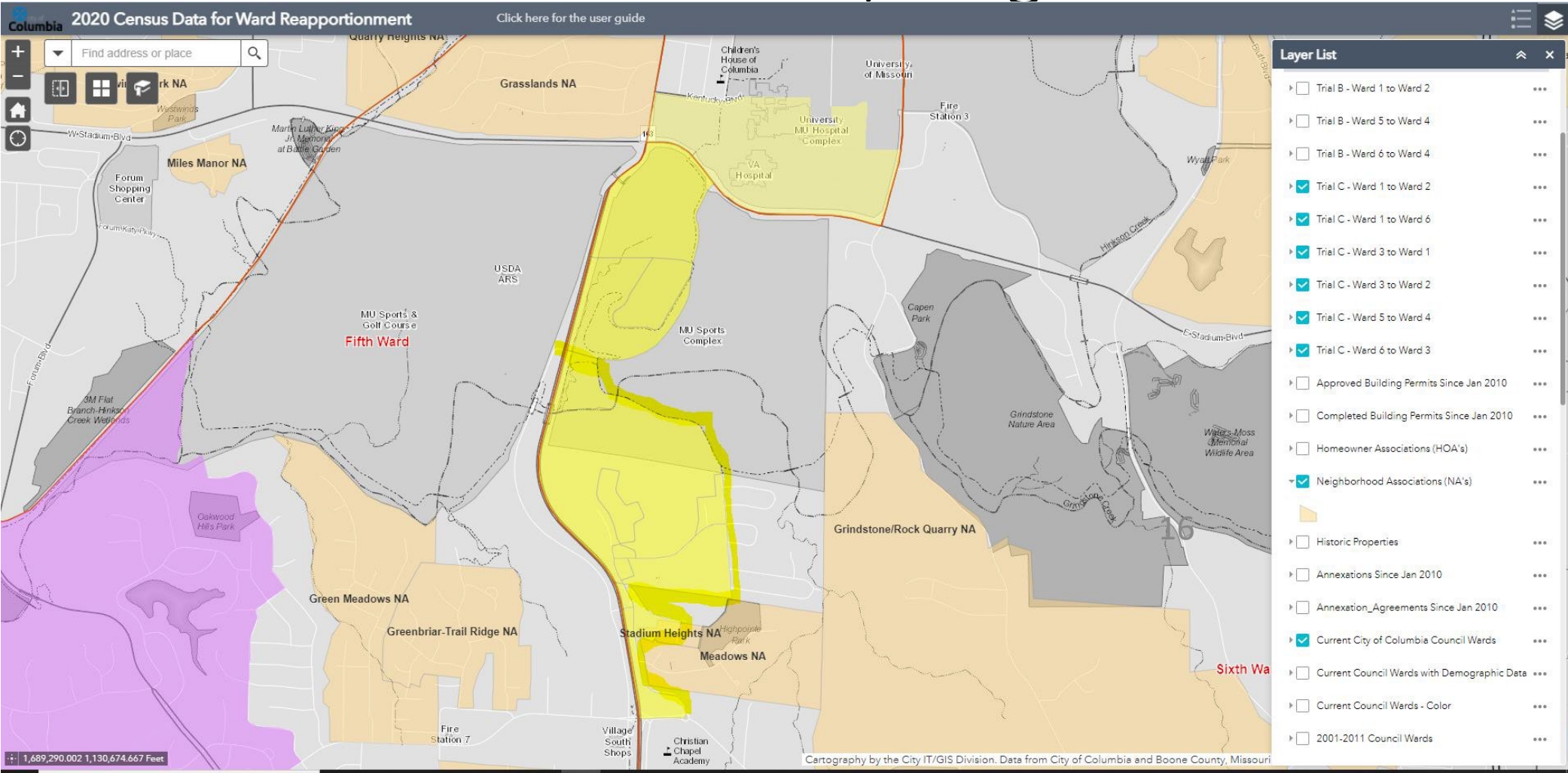
Trial C

This map transfers 6,560 people to a different ward. The percentage deviation of the difference between the largest and smallest wards is 1.0 percent. Trial C was developed to provide an option a) that involves all wards in the boundary change process and b) transfers some of the concentration of student population out of 1st ward.

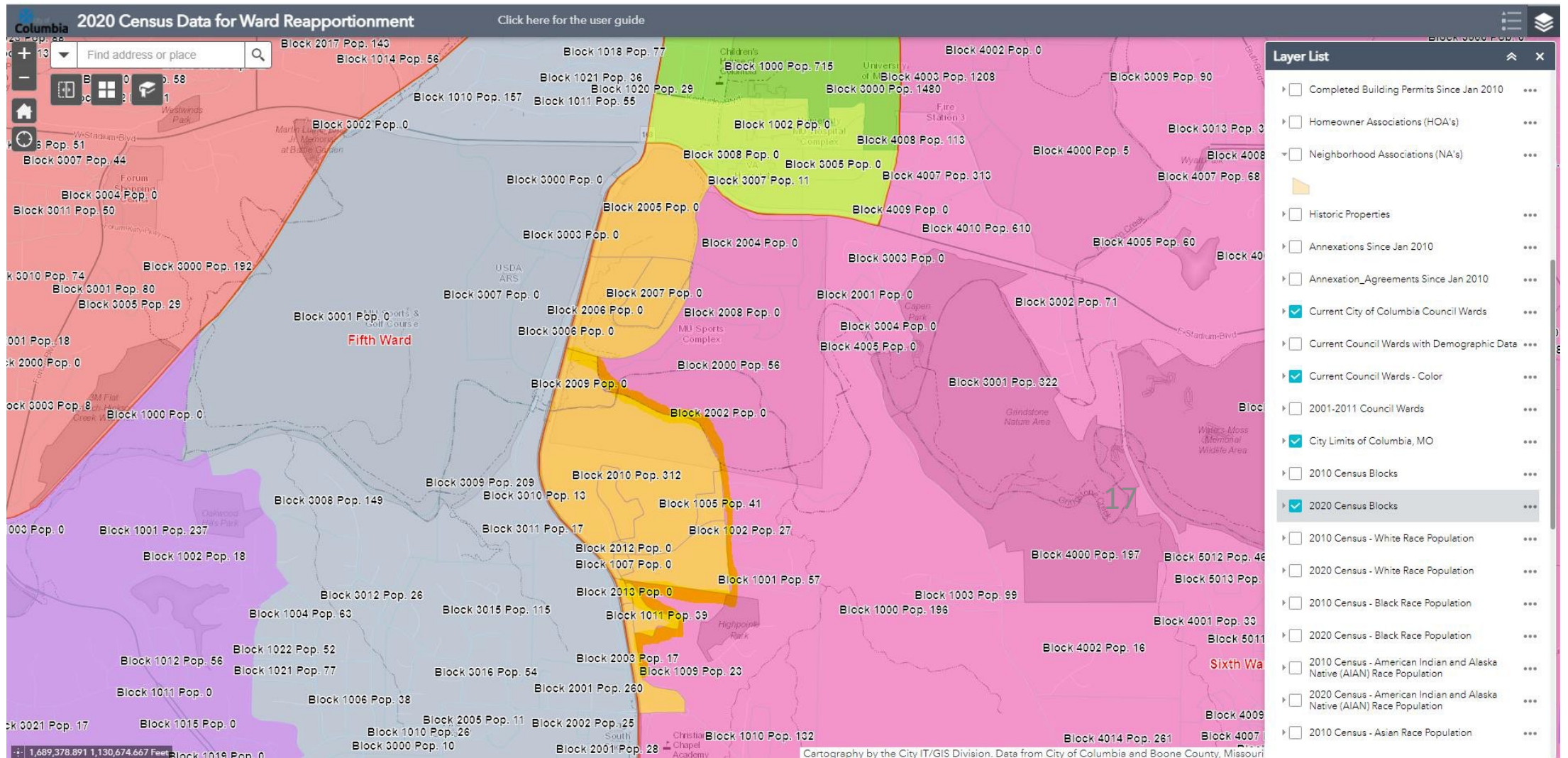
Trail C reassigns seven areas to new wards:

1. An area east of Providence Road, between Kentucky Avenue and Stadium Boulevard, transfers 1,132 people from 1st Ward to 6th Ward. This addresses the goal of transferring some student population out of the 1st Ward.
2. The same area as A.2 in Trial A, between the MKT Trail and Nifong Boulevard, transfers 1,853 from 5th Ward to 4th Ward.
3. A similar area as area A.3 in Trial A, between Stadium and Green Meadows east of Providence Road, transfers 695 people from 6th Ward to 5th Ward. Several census blocks of zero population are not included to maintain map continuity with the transfer from 1st Ward.
4. An area south of Broadway, between College and William, and south of Wilson, between College and Lee Street, transfers 1,270 people from 6th Ward to 3rd Ward. This reduces the 6th Ward population to near the average size after accounting for transfers C1 and C.3 above. This transfer would split the representation of the East Campus Neighborhood Association between two wards.
5. Three locations on the east side of Oakland Gravel Road transfer a combined 1,147 people from 3rd Ward to 2nd Ward. This adds population to 2nd Ward to make it closer to the average.
 - a. Paris Road to Sylvan Lane between Vandiver and I-70, transfers 711 people;
 - b. The majority of Springdale Estates Subdivision between Bear Creek and Bear Creek tributary, transfers 421 people.
 - c. A single census block located between Oakland Gravel Court and US Hwy 63 transfers 15 people.
6. An area between Business Loop 70 and I-70 from their point of intersection east to Paris Road transfers 189 people from 1st Ward to 2nd Ward. This transfer makes the 2nd Ward population closer to the average ward population.
7. A triangular area formed by College Avenue, Paris Road and Business Loop 70 transfers 274 people from 3rd Ward to 1st Ward. This transfer adds some population to 1st Ward to partially offset transfers from 1st to 6th and 2nd Wards.

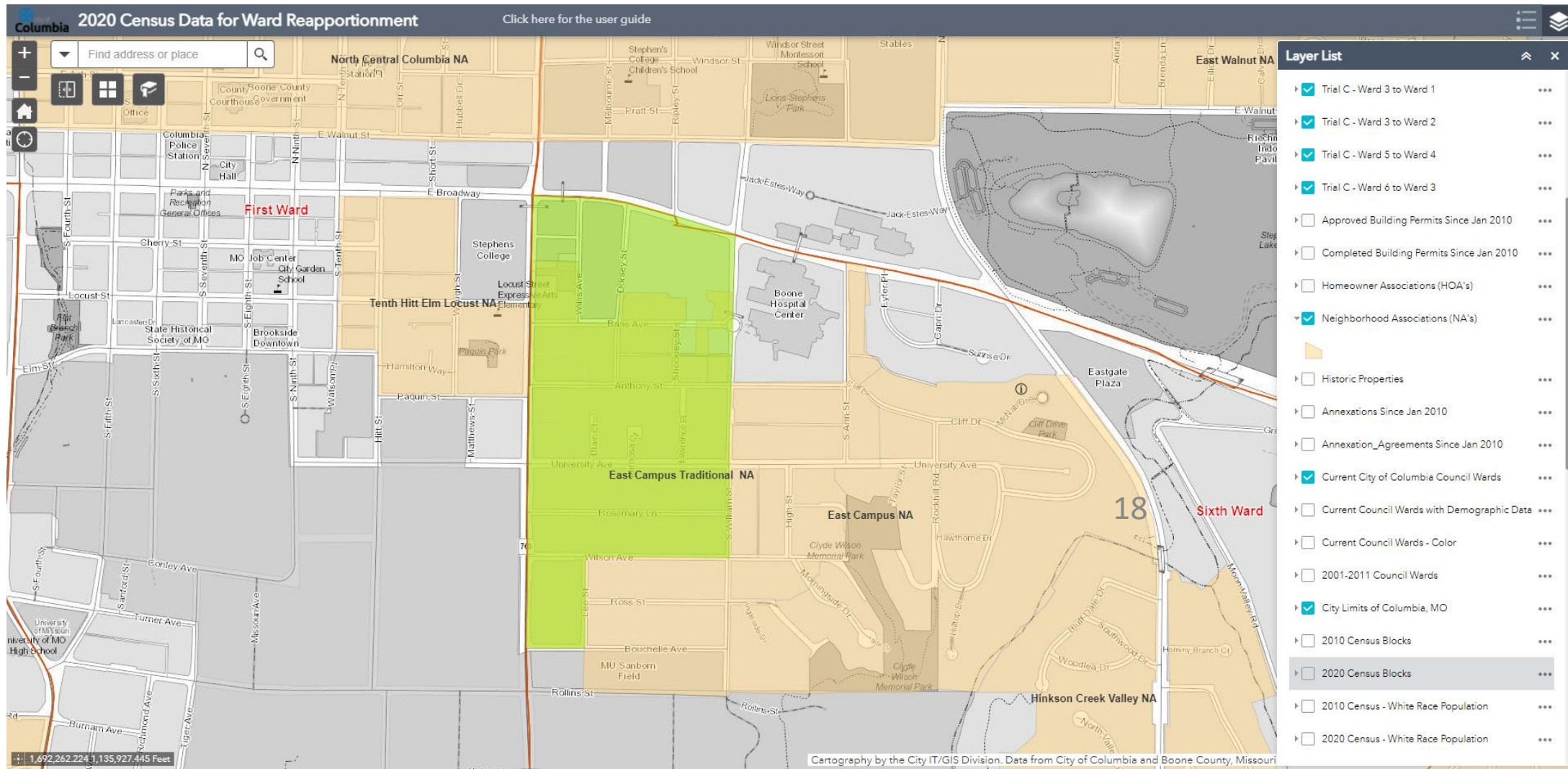
Trial C 1st to 6th and 6th to 5th w/ neighborhoods



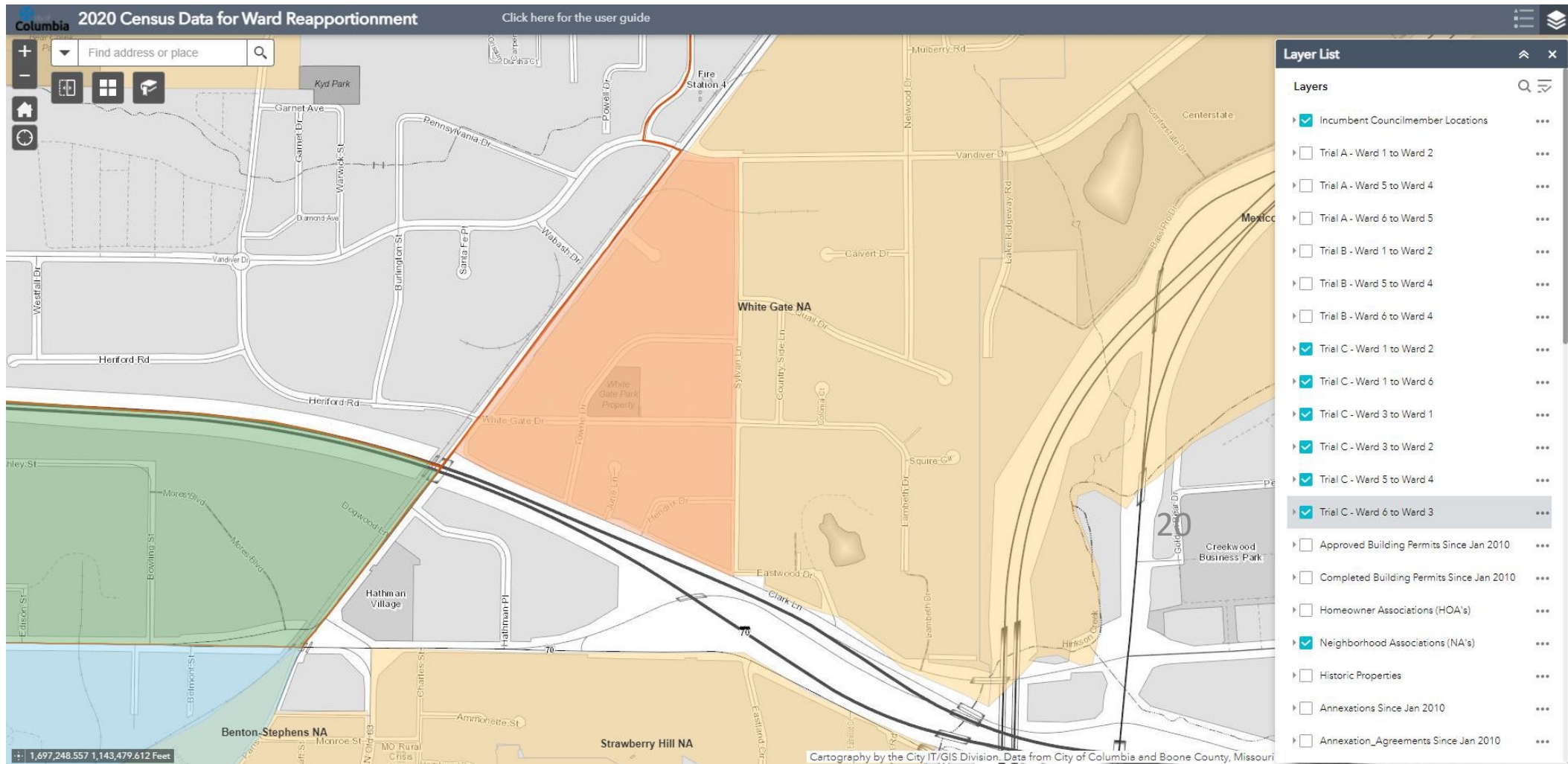
Trial C 6th to 5th w/ blocks



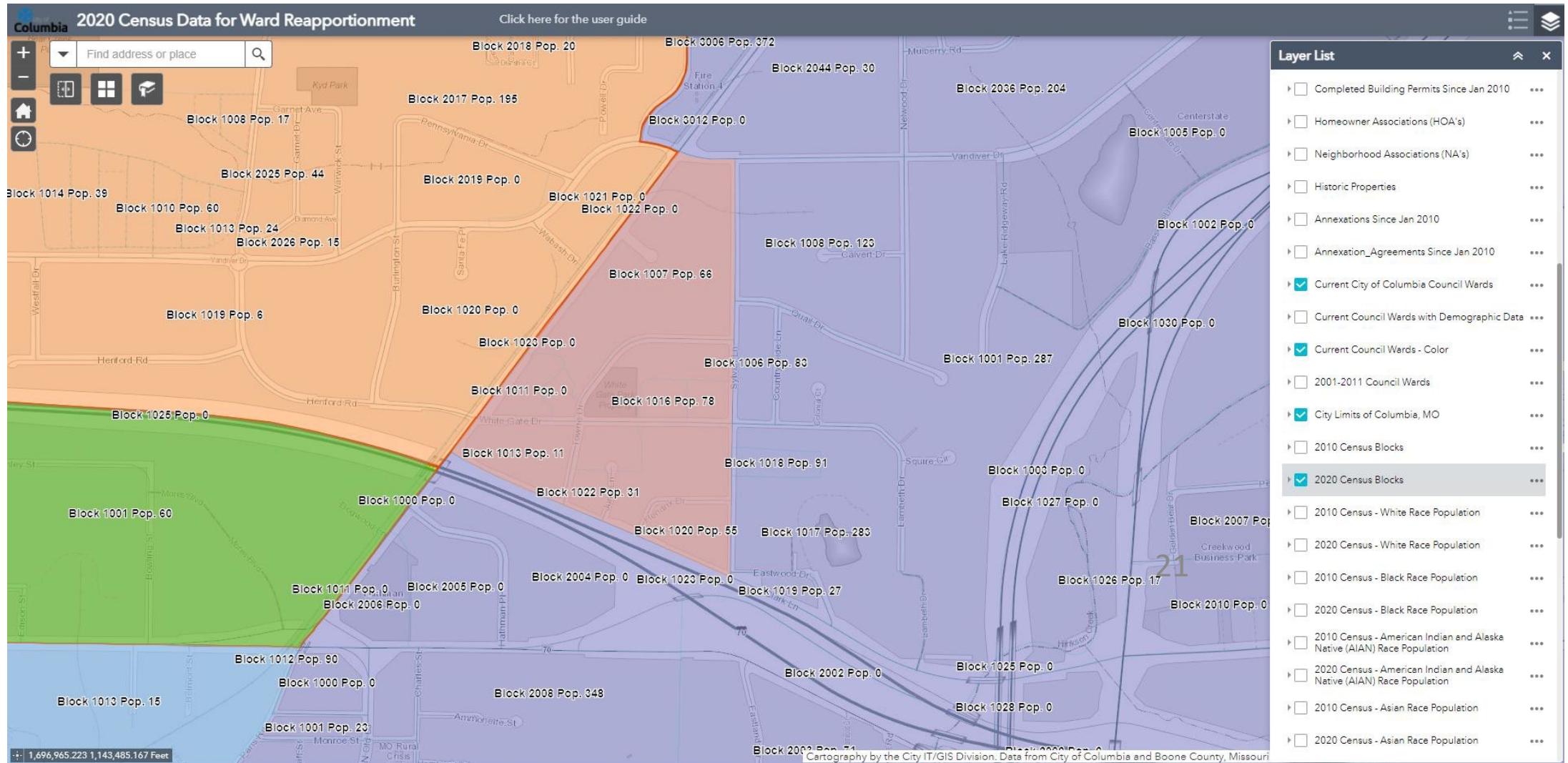
Trial C 6th to 3rd w/ neighborhoods



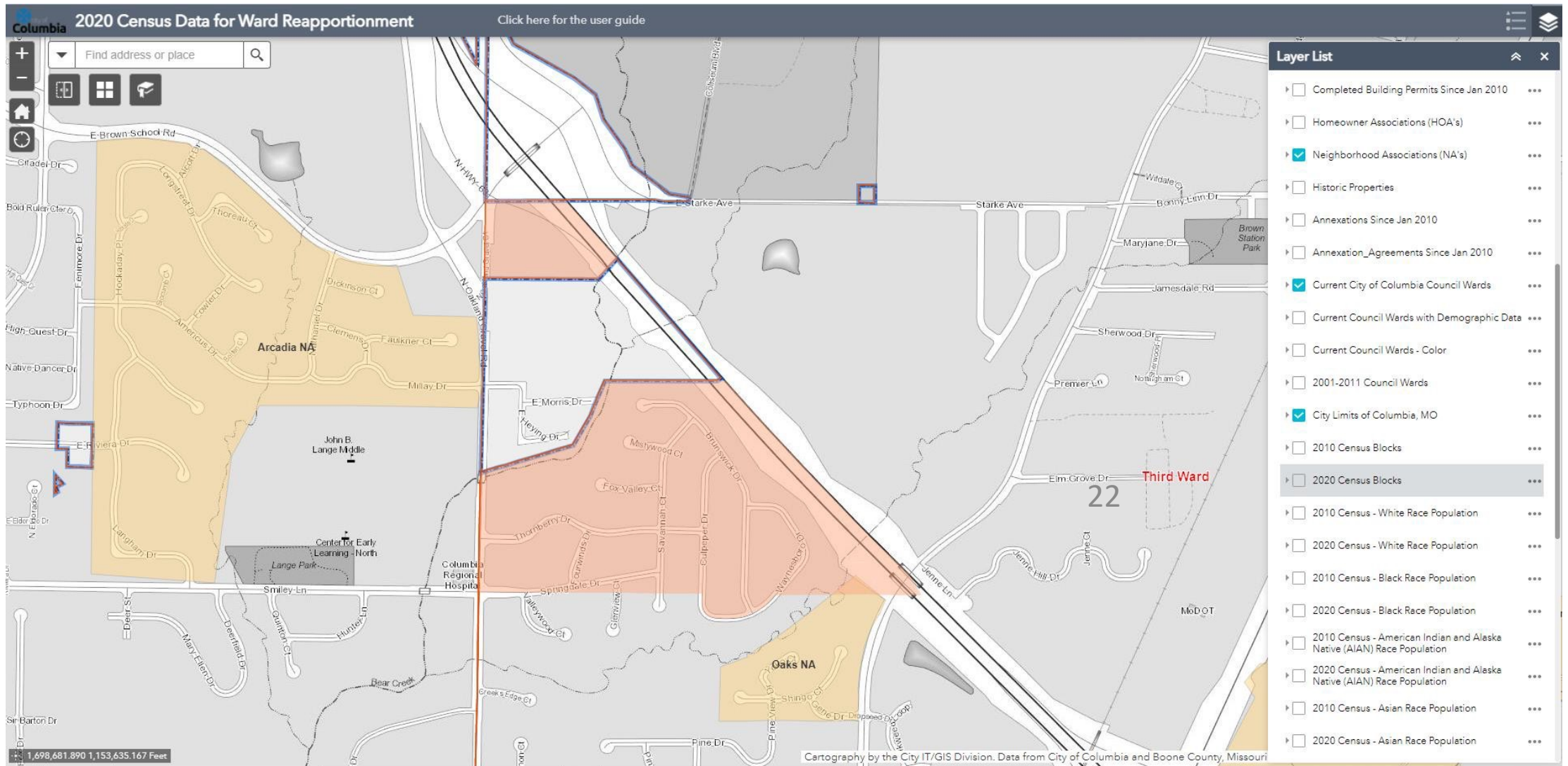
Trial C 3rd to 2nd w/ neighborhoods



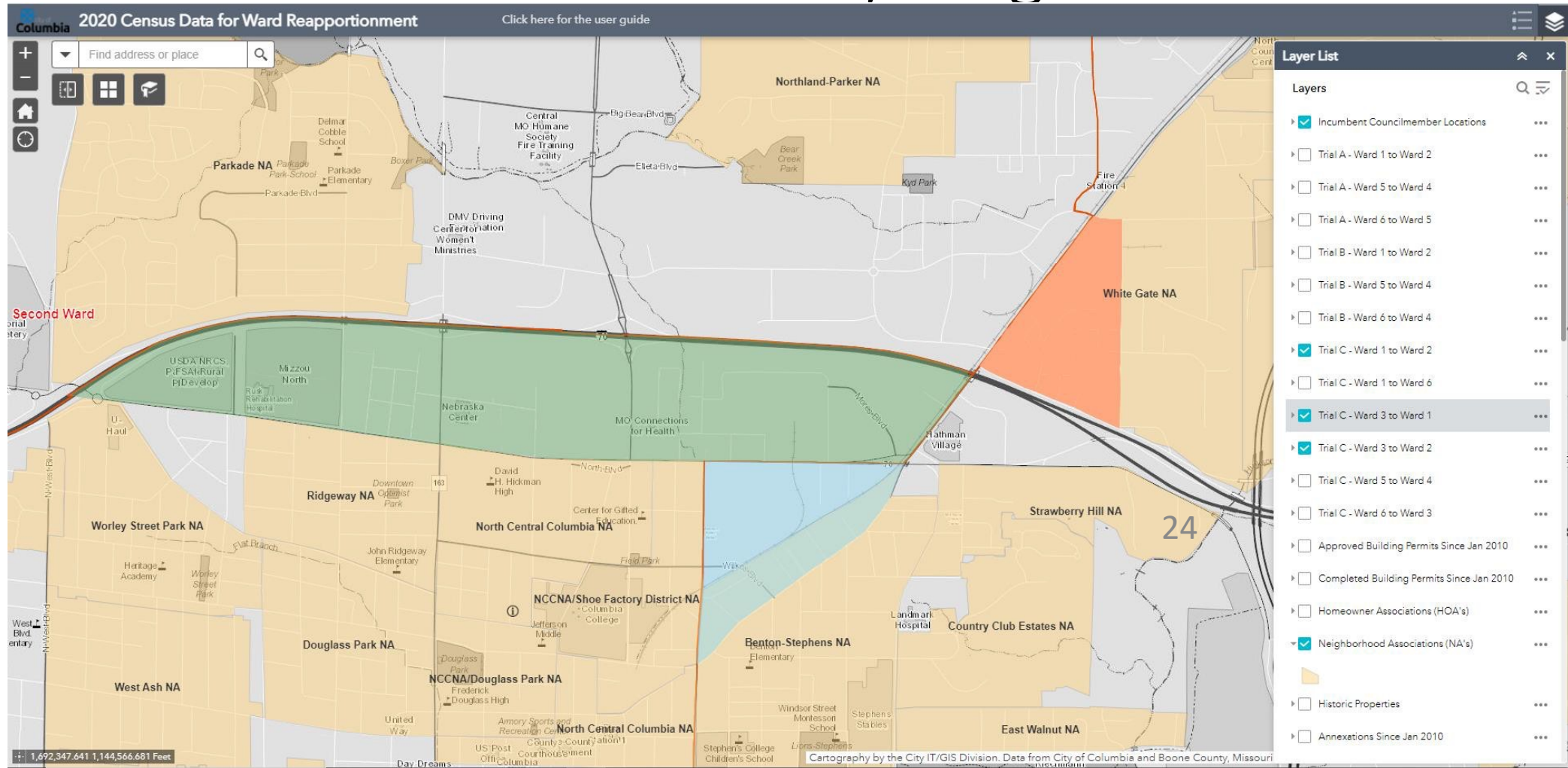
Trial C 3rd to 2nd w/ blocks



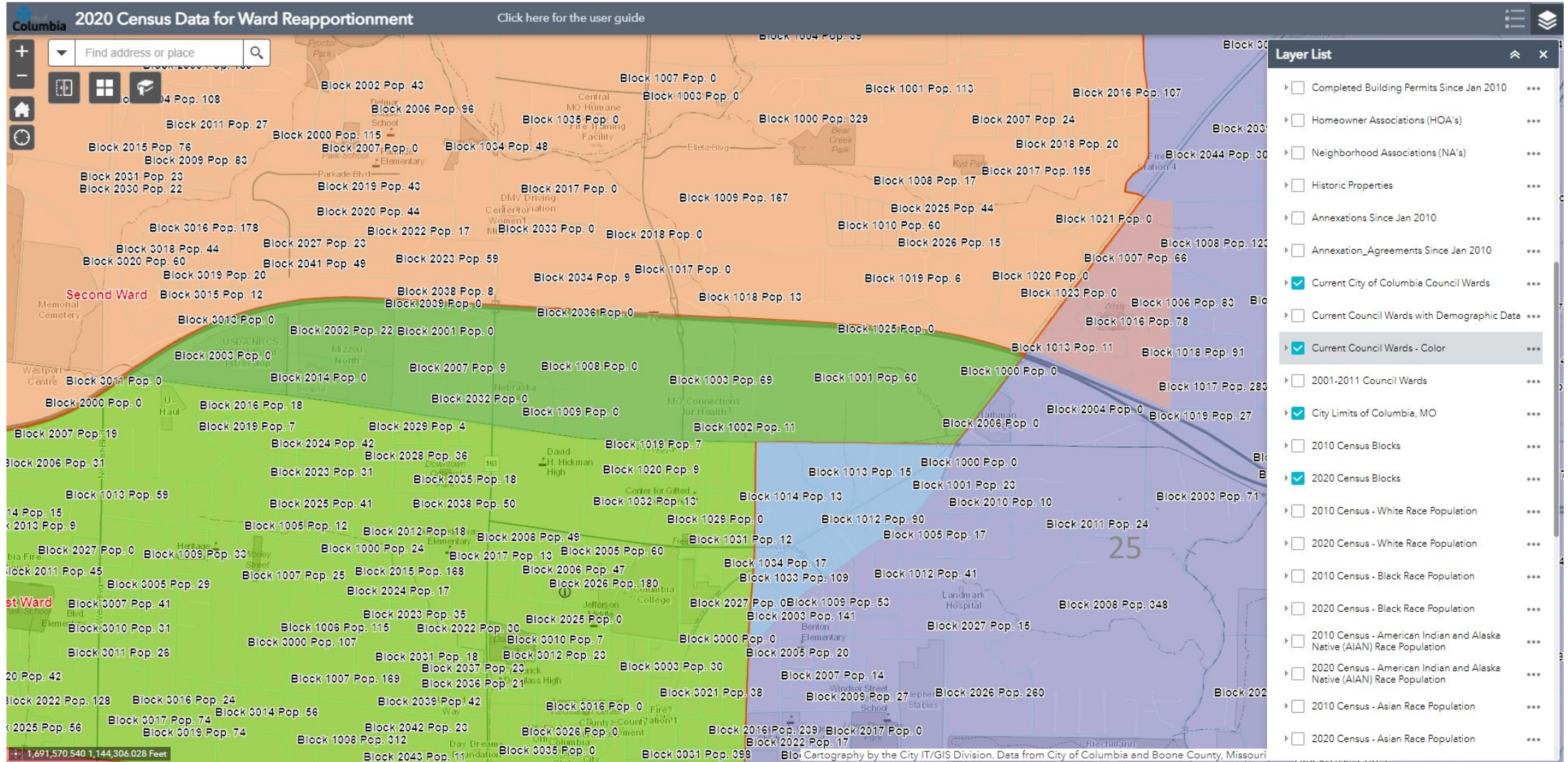
Trial C 3rd to 2nd w/ neighborhoods



Trial C 1st 3rd to 2nd and 3rd to 1st w/ neighborhoods



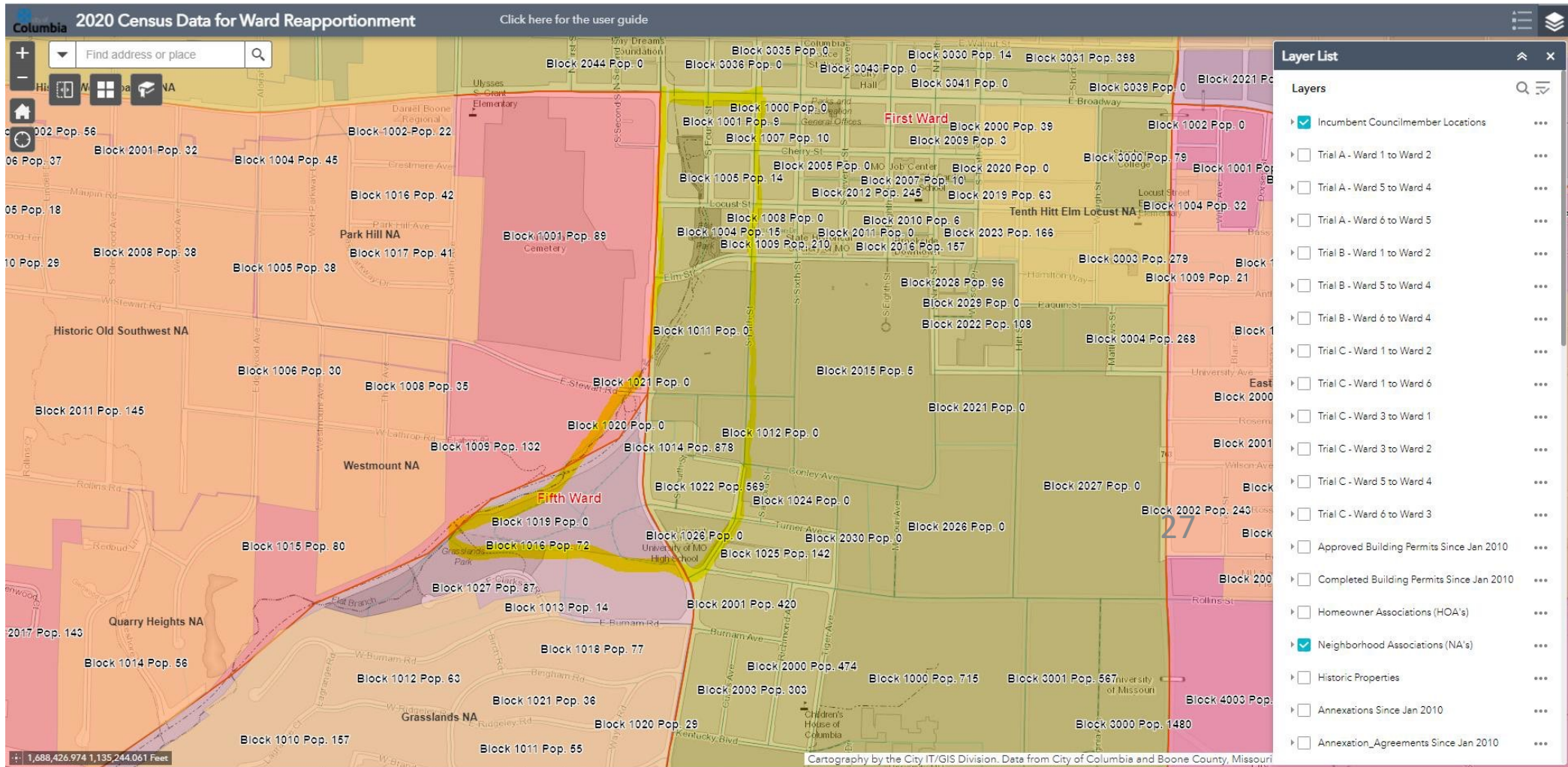
Trial C 1st, 3rd to 2nd; 3rd to 1st w/ blocks



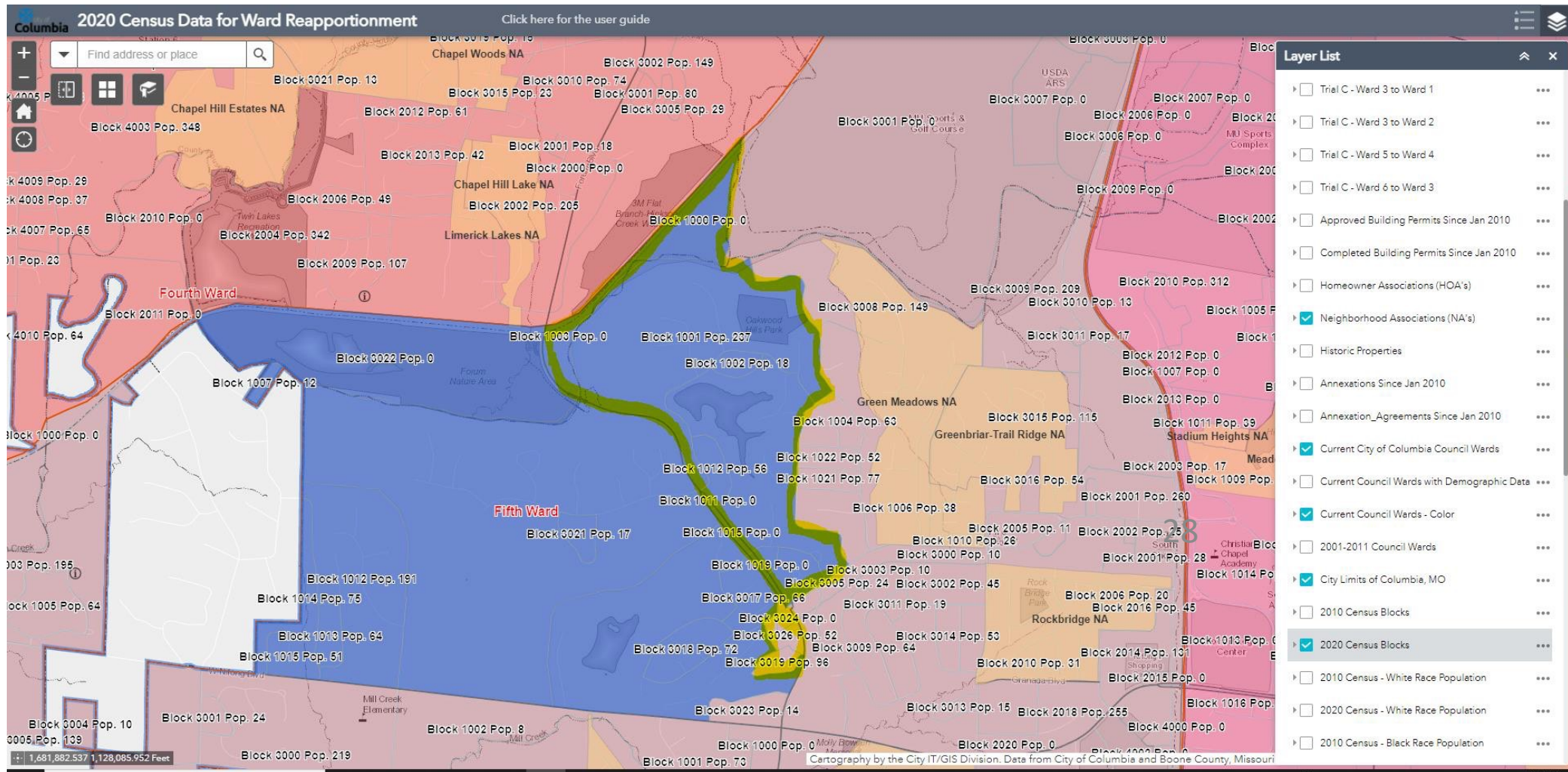
Alternatives

- Slides that follow are some areas that could be considered in alternatives to parts of trial maps A, B, C
- Have not been presented to public; only informally discussed with committee during work sessions
 - Student housing area 1st ward
 - 5th Ward transfer area boundaries
 - Alternatives to transfer of part of East Campus to 3rd (Trial C)

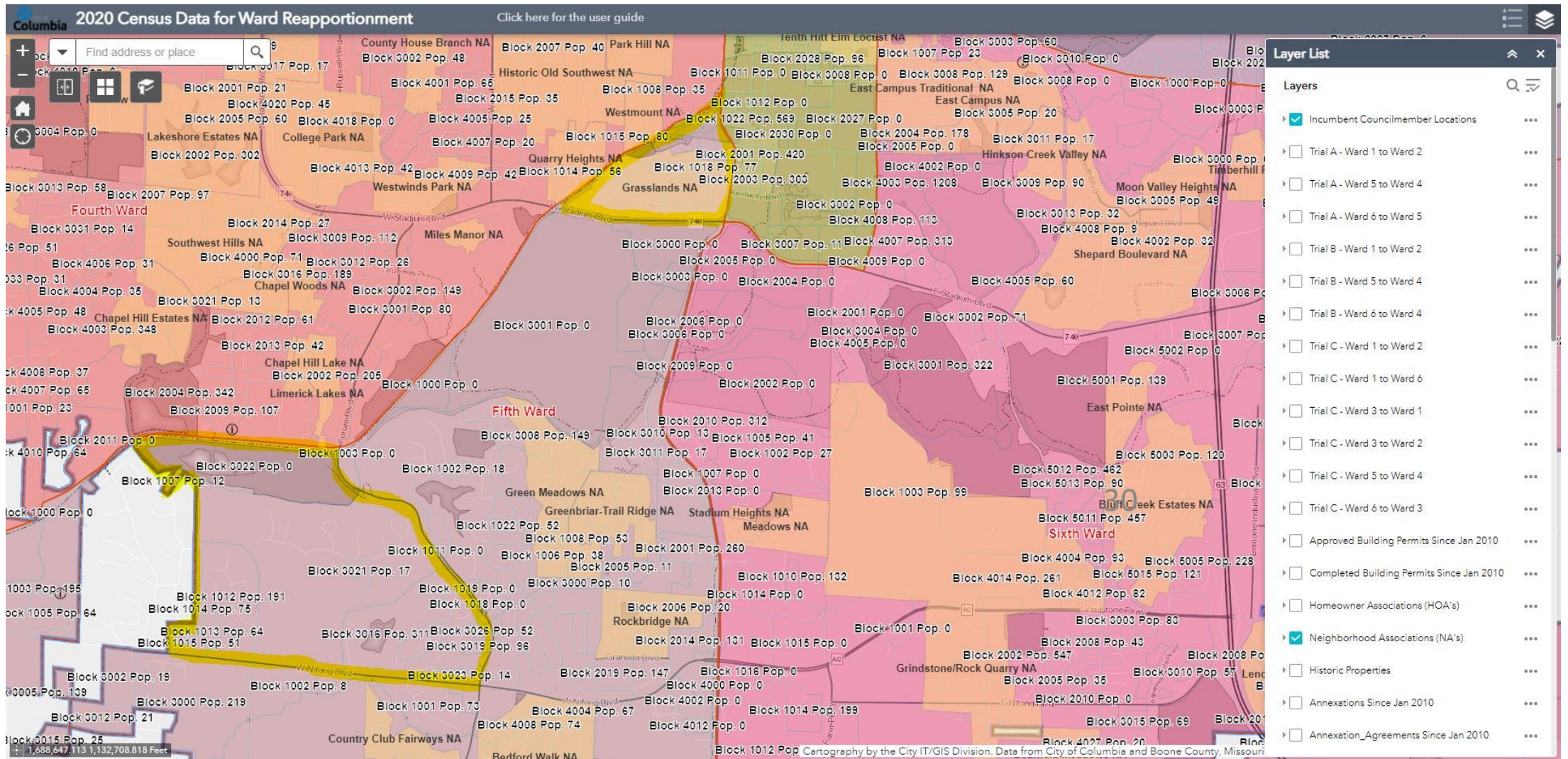
Alternative area: 1st to 4th



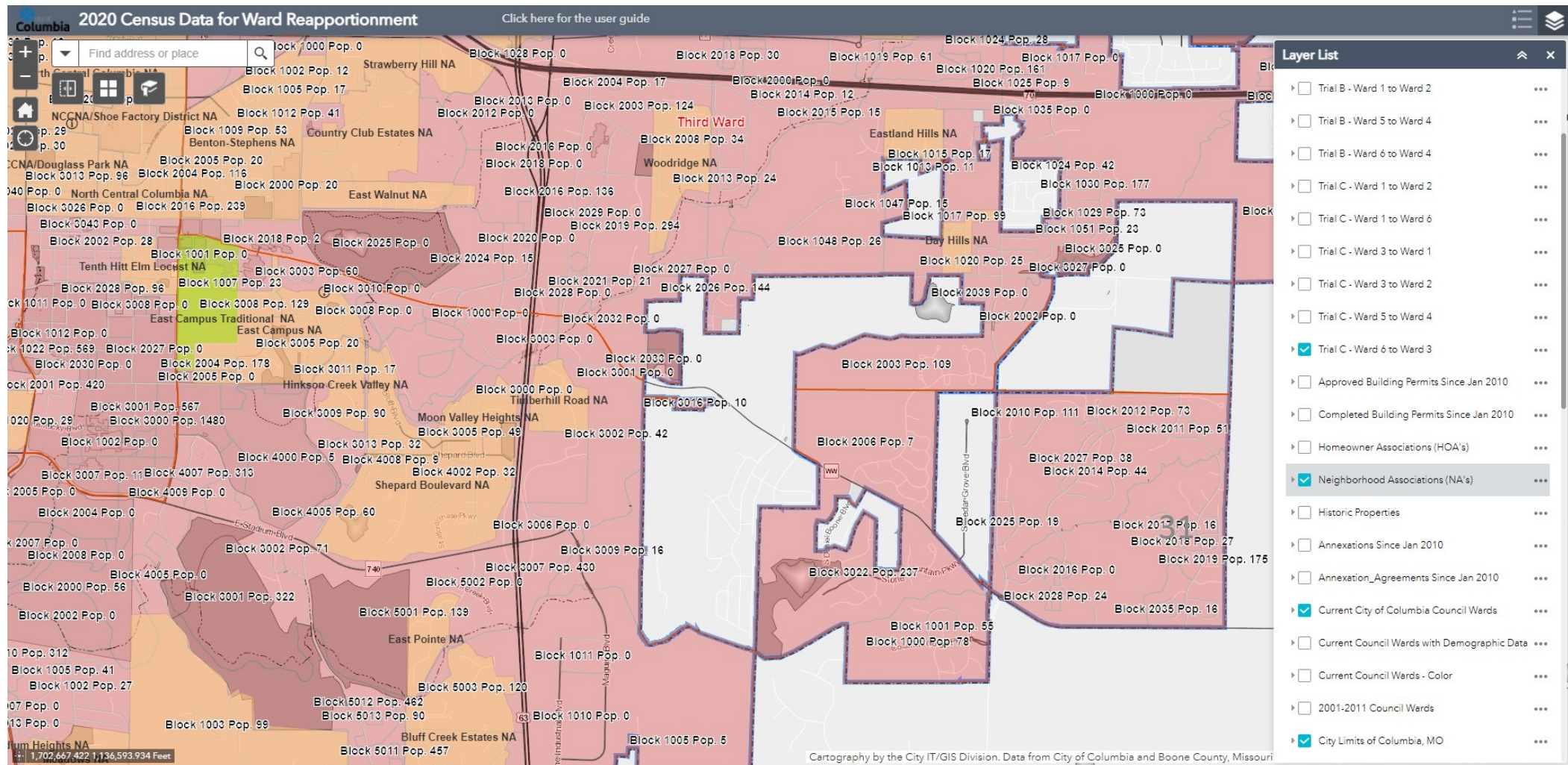
Alternative area: 5th to 4th



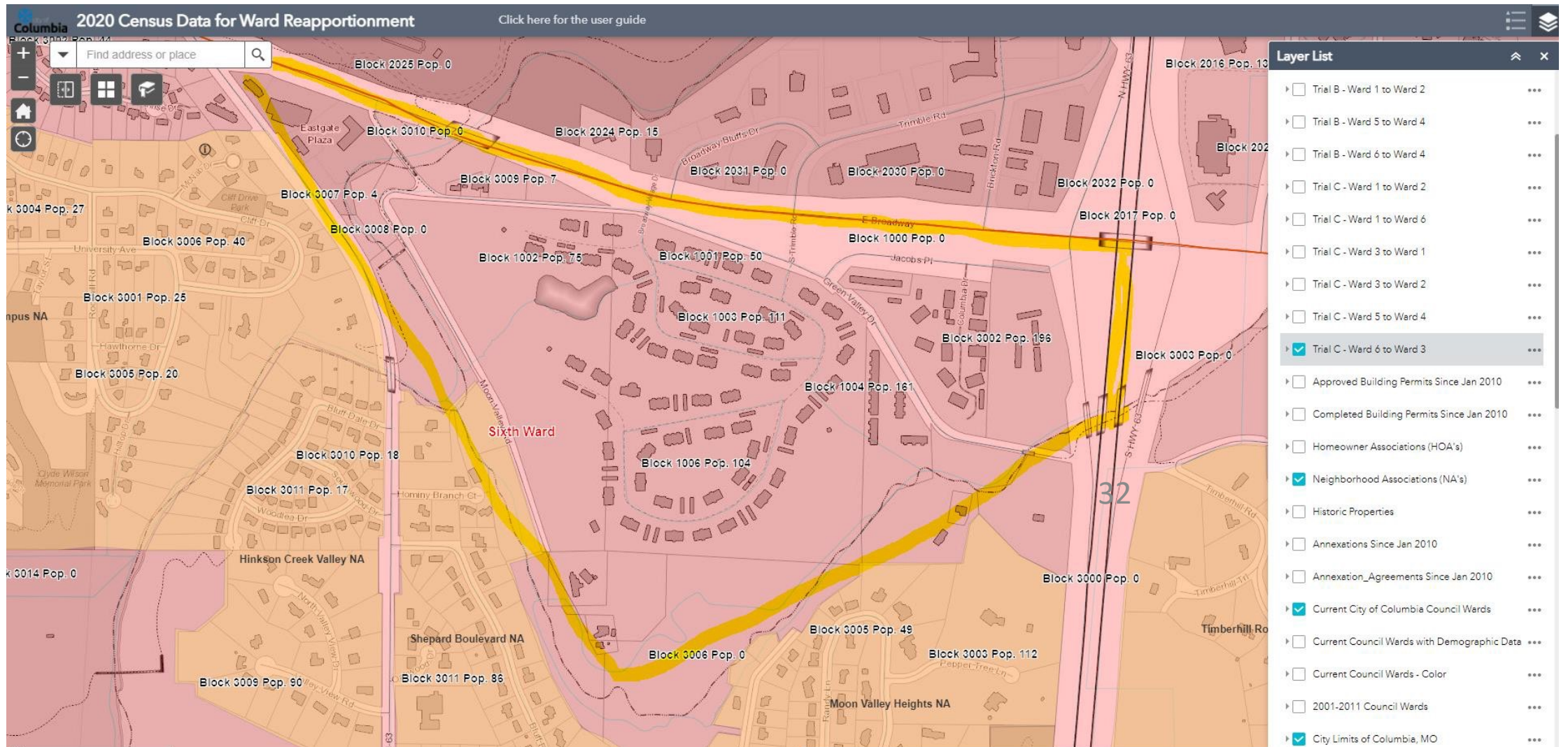
Alternative area: 5th to 4th



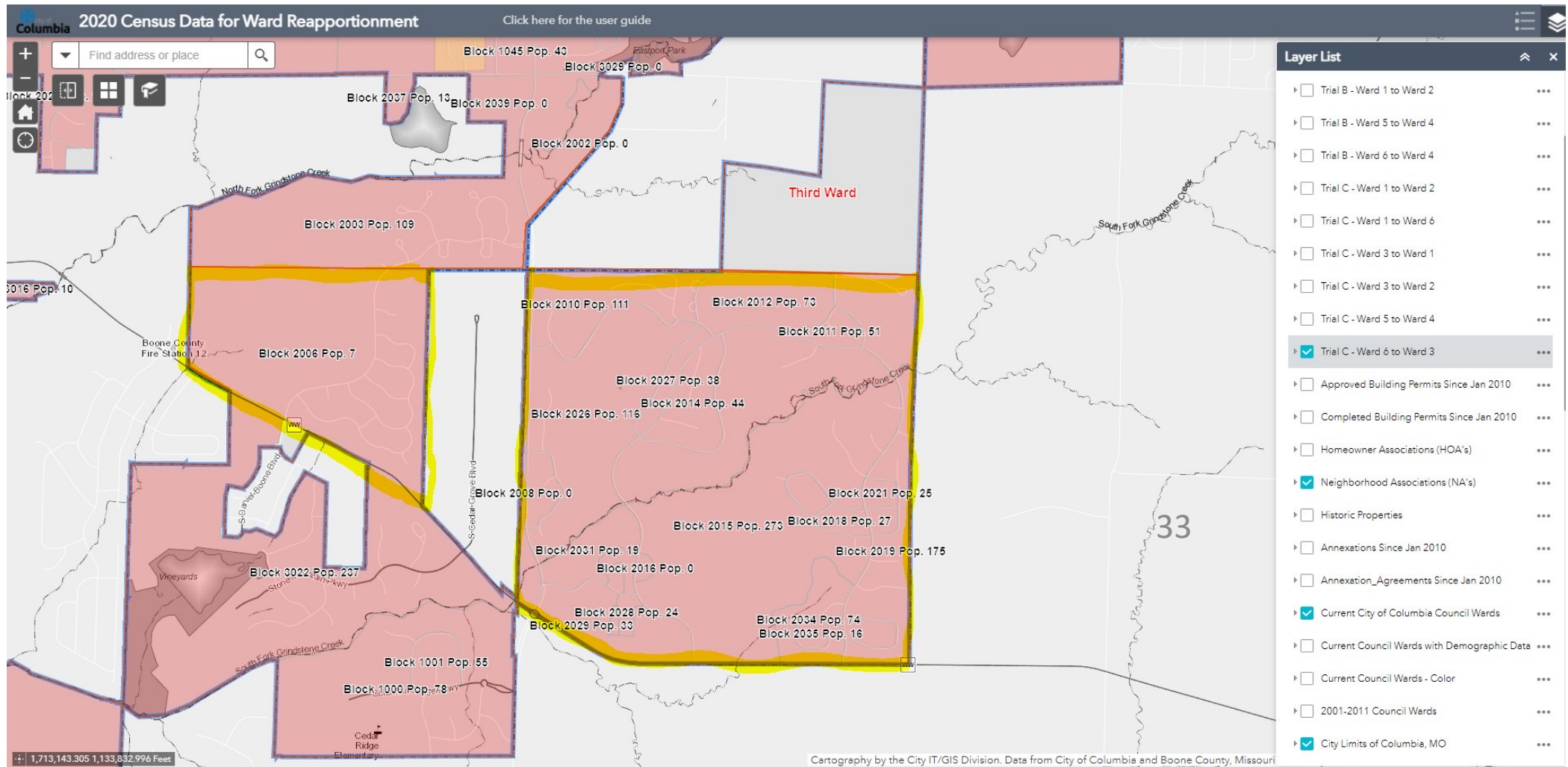
Alternative a



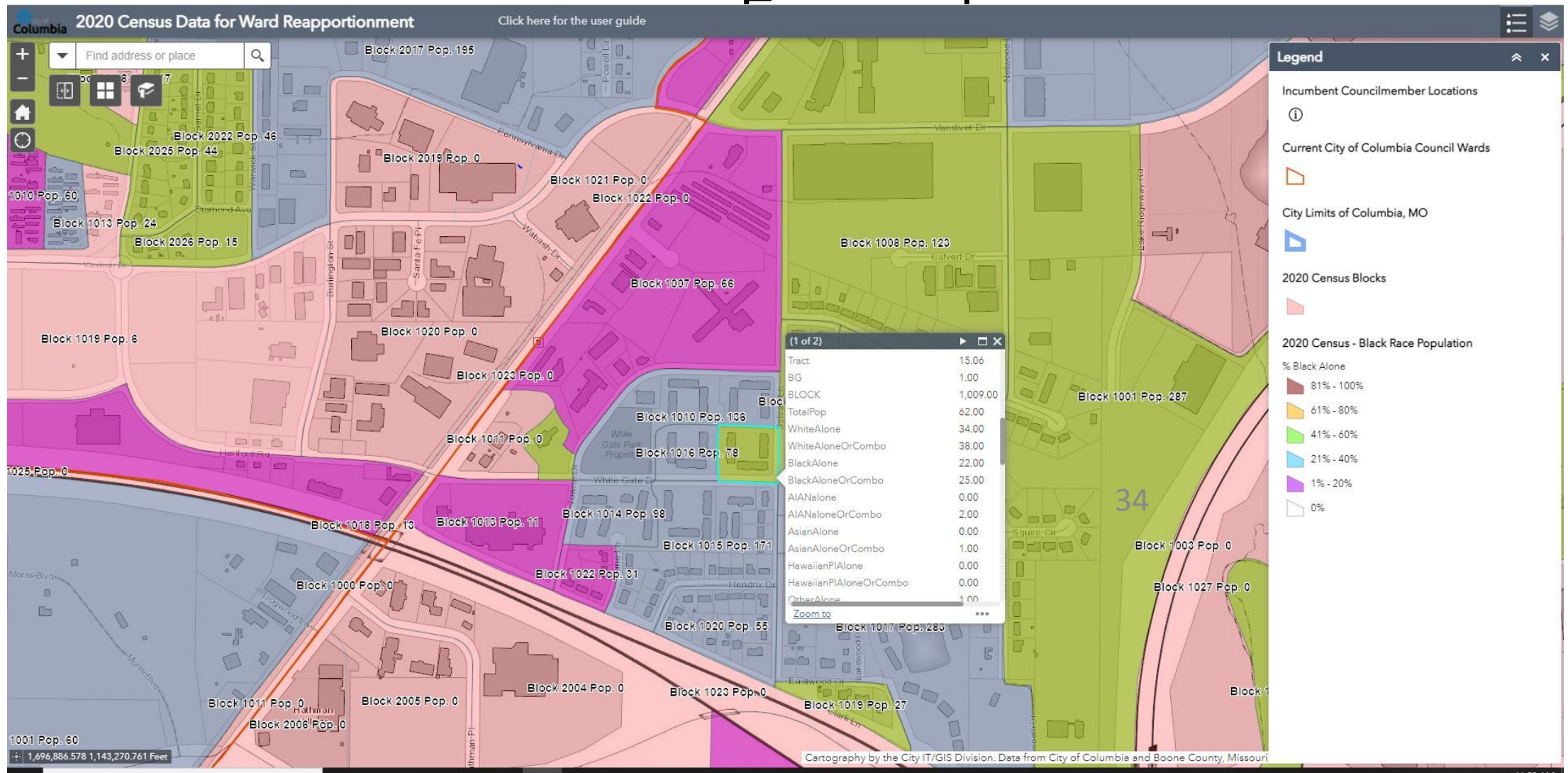
Alternative area 6th to 3rd



Alternative area 6th to 3rd



Interactive Web Map: Acco



Accessing data: Example

