

Rock Quarry Road Vegetation Plan Transmission Line Corridor Development and Maintenance Plan

Site Assessment

The power line corridor along the east side of Rock Quarry Road has recently been cleared of most woody vegetation. This consisted primarily of Black locust (*Robinia pseudo-acacia*), Chinkapin Oak (*Quercus muehlenbergii*), American Elm (*Ulmus americana*) and Bush Honeysuckle (*Lonicera xbella*).

Development

Conversion of the utility line corridor will involve the control of woody tree and shrub species:

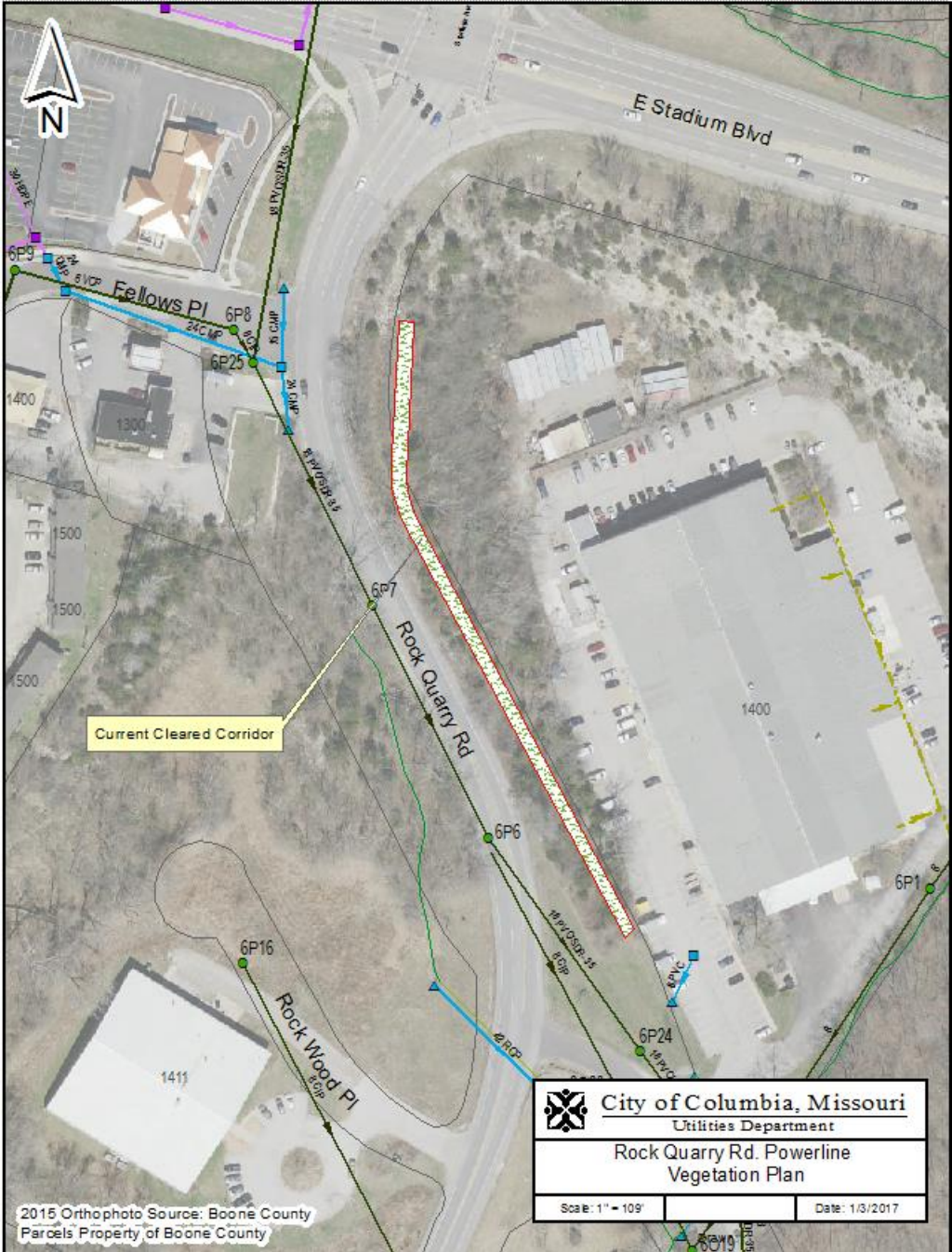
1. Pre-treatment with Glyphosate or Triclopyr herbicide to control woody vegetation growth. This can be done in early spring after seed has been sown this winter.
2. Broadcast flower seed mix in December-February as part of a frost seeding process. The warm season grass seed will be broadcast in late January or February.

Cost Estimate:

Shallow Soil Mix – Missouri Wildflower Nursery		
	2 #'s @ \$85.00	\$170.00
Grass Mix – Little Blue & Sideoats	4#'s @ \$25.85	\$103.40
Herbicide (Shrubby Invasive Control ?)		\$50.00
	Total	\$323.40

Maintenance

For the first 3-4 years site maintenance will be limited to relatively aggressive woody vegetation control. This should include some of the woody's outside the corridor (mainly shrub honeysuckle). This will allow for better growth of the seedlings that take up to three years to manifest as flowering plants. This is typical of native perennial flowering plants. Additionally spot spraying of woody tree and invasive plant species will be required. Periodic burning would be optimal but not a requirement. Weedeating once in early spring would be adequate. This will optimize the site over time. Prairie species are best managed with periodic burning.



City of Columbia, Missouri
 Utilities Department

**Rock Quarry Rd. Powerline
 Vegetation Plan**

Scale: 1" = 109'

Date: 1/3/2017

2015 Orthophoto Source: Boone County
 Parcels Property of Boone County