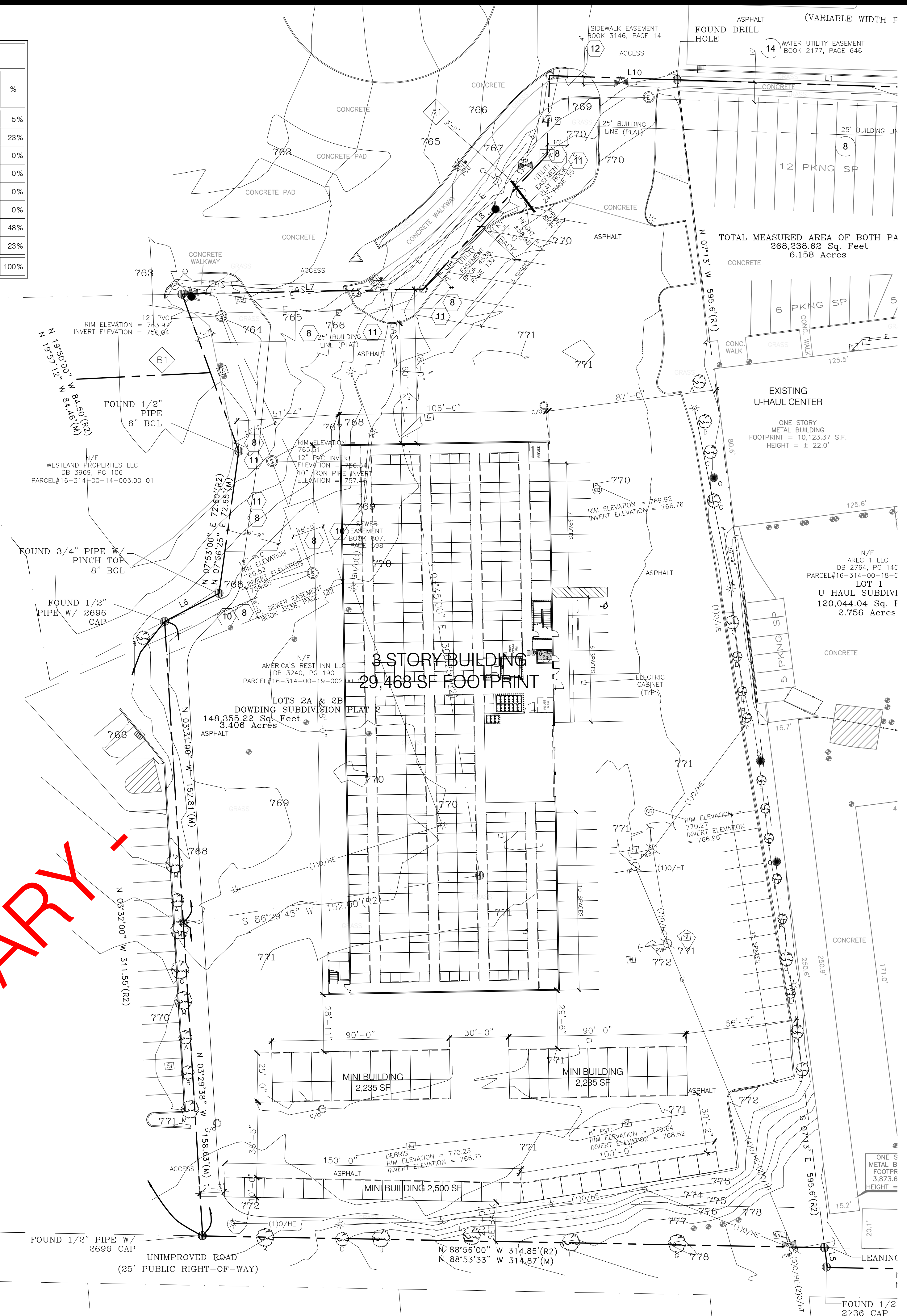


PROPOSED MIX

LOCKER SIZE	BUILDING A						MINI	SQ. FT.	%	TOTAL	SQ. FT.	%
	1st	SQ. FT.	%	2nd	SQ. FT.	%						
5 x 5	40	1000	5%	44	1100	5%	128	3200	5%	0	0	0%
5 x 10	109	5450	27%	111	5550	27%	330	16,500	26%	0	0	0%
7 x 8	0	0	0%	1	56	0%	1	56	0%	0	0	0%
8 x 8	0	0	0%	1	64	0%	0	0	0%	1	64	0%
7 x 10	1	70	0%	1	70	0%	2	140	1%	0	0	0%
8 x 10	1	80	0%	1	80	0%	3	240	0%	0	0	0%
10 x 10	99	9900	50%	98	9800	49%	100	10,000	50%	297	29,700	47%
10 x 15	23	3450	17%	33	4950	23%	33	4950	23%	89	13,350	21%
TOTAL	273	19,950	100%	290	21,670	100%	290	63,390	100%	61	7,000	100%

- PRELIMINARY -



SITE SCALE: NTS

Zoning Information

Project Name: U-Haul Moving & Storage at University of Missouri
Municipality: City of Columbia
Project Address: 900 I-70 Dr Southwest Columbia, MO
Site Acre / Land Area: 3.41 acres
Zone: MC (Mixed-Use Corridor)

Abutting Zoning District: N- MC
S- R-2
E- IG
W- MC

Uses: Self-storage, U-Haul truck and trailer share, U-Box, and retail

Setbacks (Principal Structures): Front yard setback: 25 ft
Side yard corner lot setback: 15 ft
Side yard general lot setback: 0 ft
Rear yard setback: 20 ft

Maximum Building Height: 45 ft / 4 stories

Parking: Self-Service Storage Facility: 1 space per 20 storage units = 42.65 SPACES
TOTAL PARKING PROVIDED 43 SPACES

Minimum Landscaped Area: 15% 15.2% PROVIDED

Landscaping:

- All paved areas with more than 40 ft of length within 25 ft of a street ROW shall have at least a 6 ft wide landscaped buffer
- One street tree shall be required for every 60 ft of street frontage

Buffer / Screening:

- Where abutting residential, a level 3 buffer is required. This includes a 10 ft wide landscape buffer and 8 ft tall screening device.

SHEET NOTES:

NO.	DATE	INITIALS	NOTES
1			
2			
3			
4			
5			
6			
7			
8			

REVISIONS:

PROFESSIONAL SEAL:

PRELIMINARY DOCUMENTS:
NOT FOR CONSTRUCTION,
FOR INFORMATION ONLY

ARCHITECT LOGO:

AMERCO REAL ESTATE COMPANY

CONSTRUCTION DEPARTMENT
2727 NORTH CENTRAL AVENUE
PHOENIX, ARIZONA 85004
P: (602) 263-6502

SITE ADDRESS:
U-HAUL AT UNIVERSITY OF MISSOURI
800 BUS LOOP 70 W
COLUMBIA, MO 65203

SHEET CONTENTS:
PRELIMINARY
SITE PLAN

735066

DRAWN: MM
CHECKED: -
DATE: 03/22/2021

SP-1

735066 A11.DWG