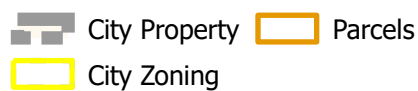


Case # 213-2025 - 905 Hirth Avenue

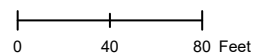
STR Conditional Use Permit

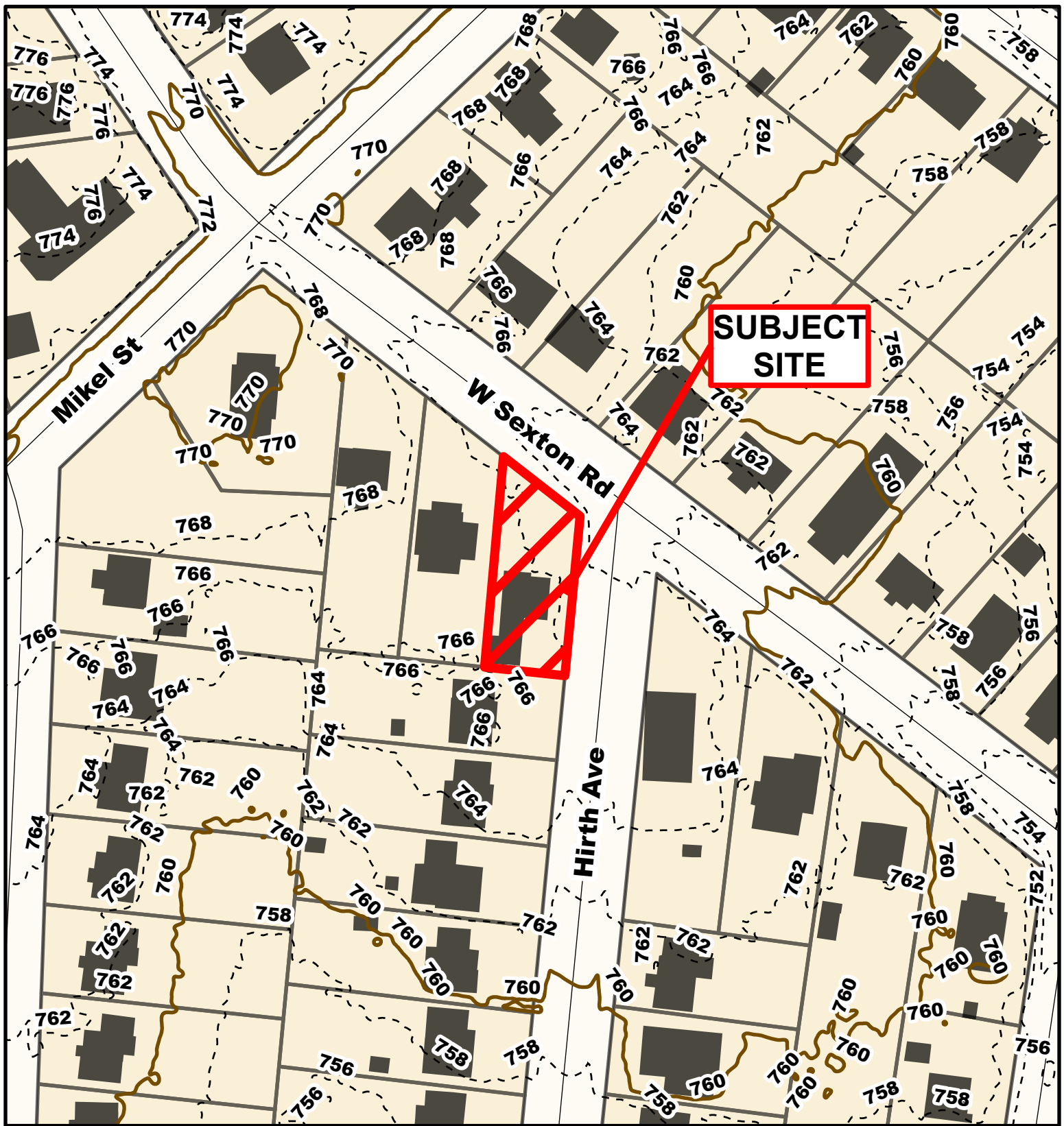


Parcel Data Source: Boone County Assessor
Created by The City of Columbia - Community Development Department



2024 Imagery: NearMap





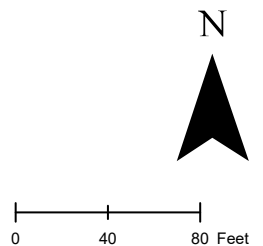
Case # 213-2025 - 905 Hirth Avenue STR Conditional Use Permit

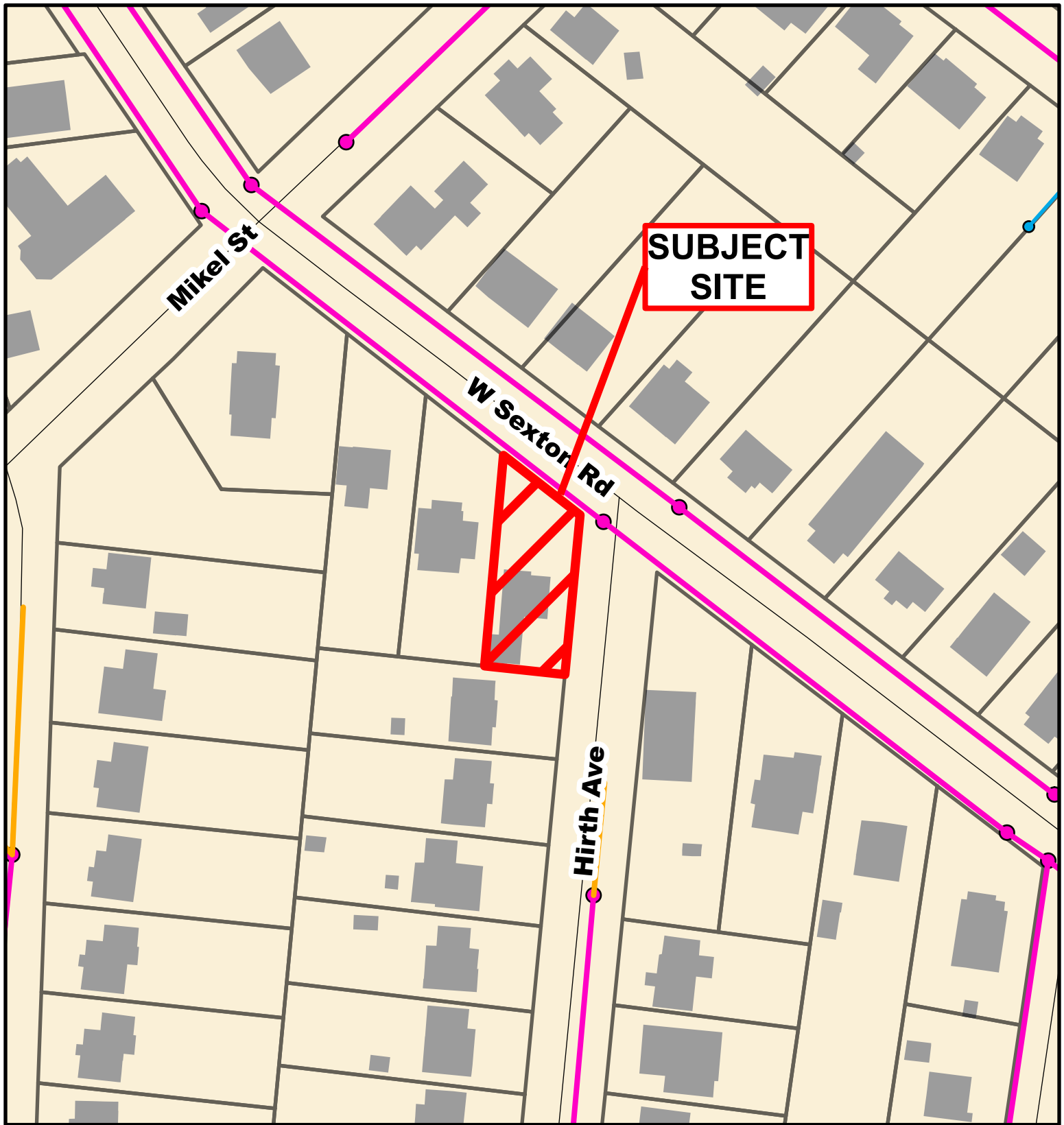


Parcel Data Source: Boone County Assessor

Created by The City of Columbia - Community Development Department


- 10 Foot Contour Lines
- 2 Foot Contour Lines
- Columbia City Limit
- Parcels





Case # 213-2025 - 905 Hirth Avenue
STR Conditional Use Permit



- City Sanitary Line
- City Storm Lines
- Private Sanitary Line
- Parcels
-  Columbia City Limit

