

## Case # 33-2024 - 700 N. Fairview Road Rezoning



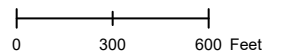
City Zoning Parcels



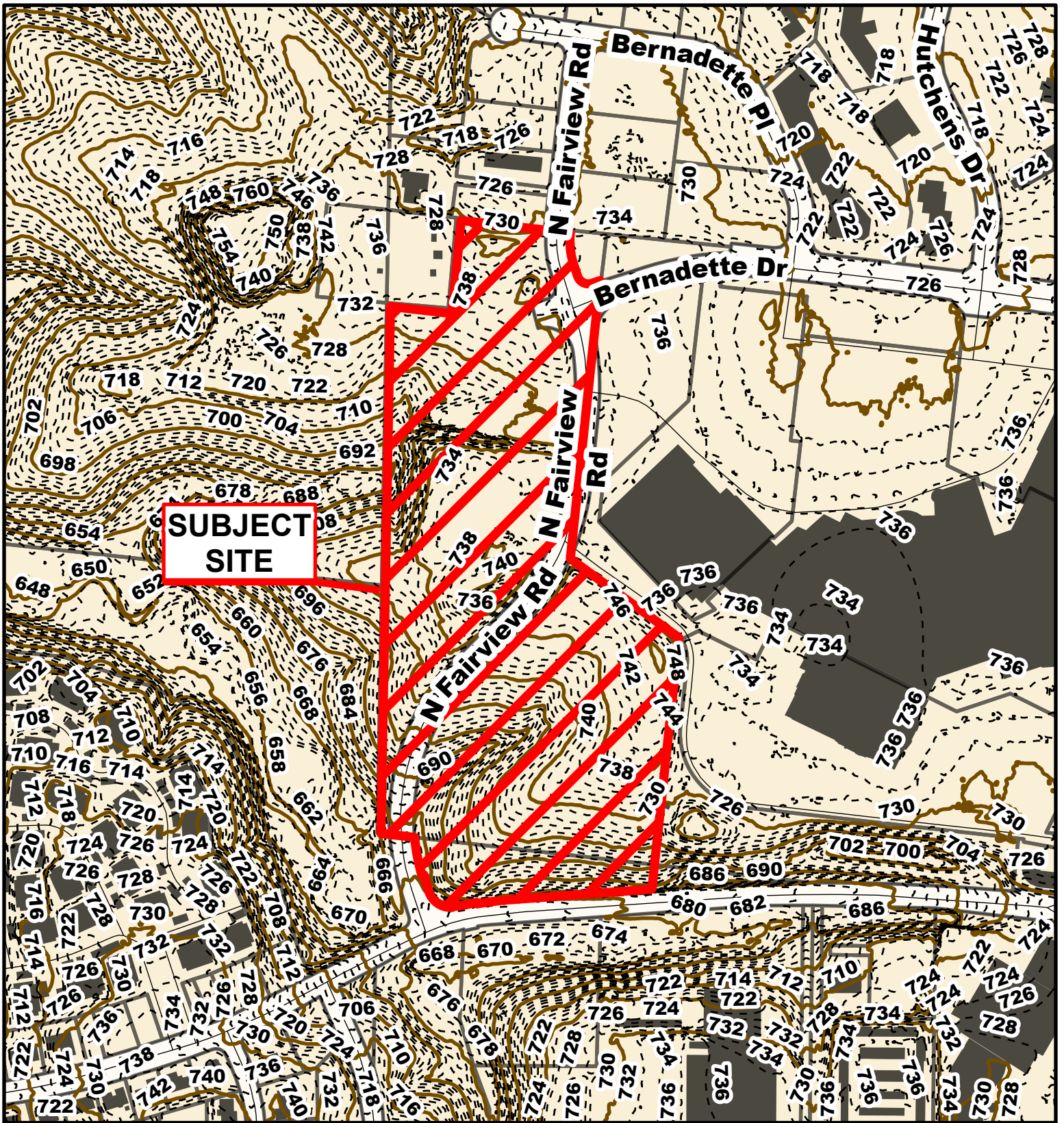
Parcel Data Source: Boone County Assessor

Created by The City of Columbia - Community Development Department

2022 Imagery: NearMap





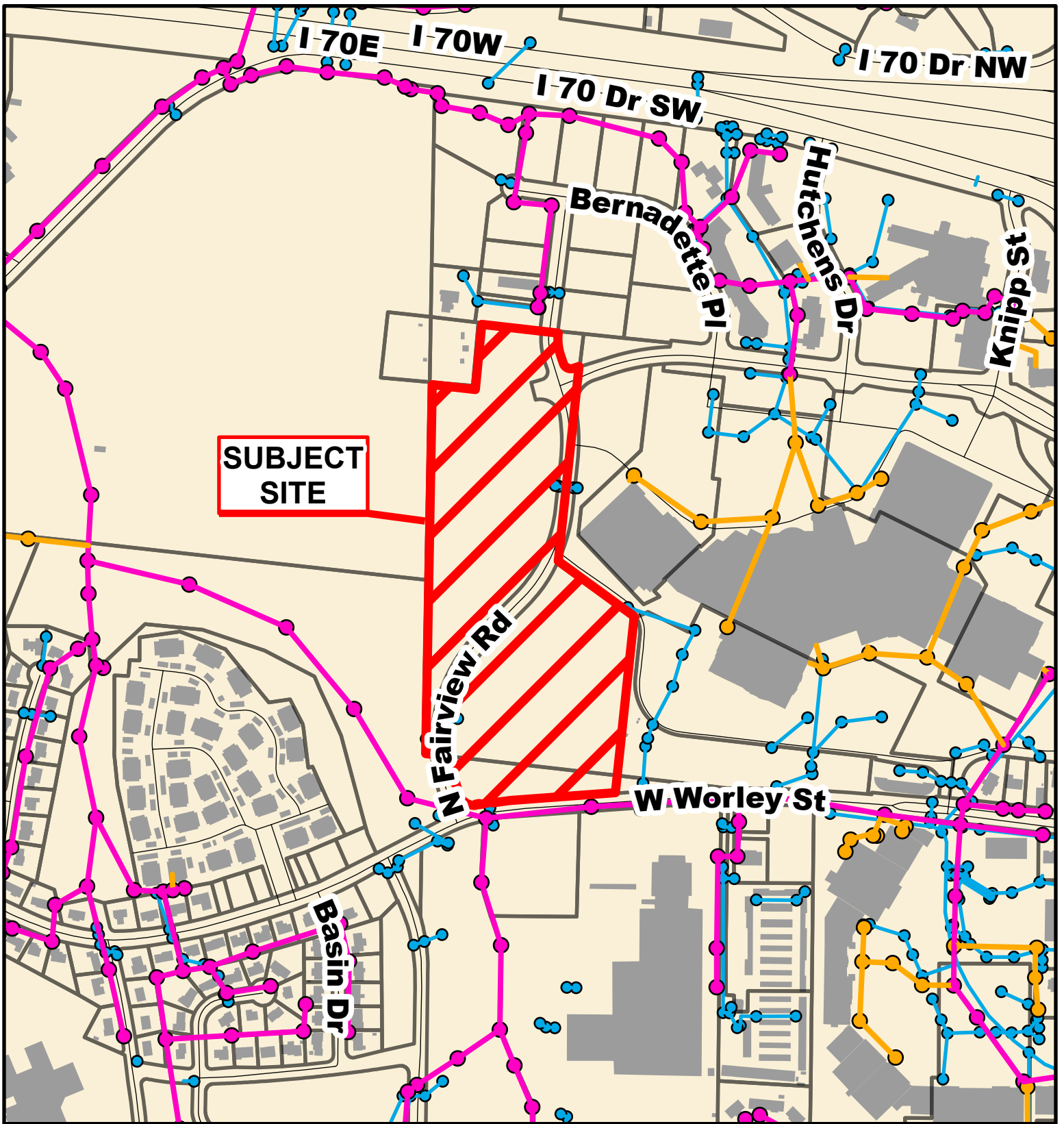


## Case # 33-2024 - 700 N. Fairview Road Rezoning



- 10 Foot Contour Lines
- 2 Foot Contour Lines
- Parcels





## Case # 33-2024 - 700 N. Fairview Road Rezoning



- City Sanitary Line
- City Storm Lines
- Private Sanitary Line
- Parcels

