

City of Columbia, MO 2015 RESIDENTIAL ENERGY CODE REQUIREMENTS DIAGRAM

October 1, 2016

Eave baffle
as required

R-49 or
R-38 with energy band

Fenestration U-Factor.....0.35
 Skylight U-Factor.....0.55
 Glazed fenestration SHGC.....0.40
 Fenestration air leakage.....< 0.3 CFM/Sq Ft
 Air leakage not to exceed 3 ACH

Exterior
sheathing

R-20 wall
assembly

**Ducts shall be sealed. Envelope (blower door
test) and duct testing are required to demonstrate
compliance.**

Water
resistive
barrier

If 2x6 wall, entire
cavity shall be filled

Programmable thermostat should be
set to heat no higher than 70 degree F
and cool no lower than 78 degrees F

2x4 wall only allowed
by approved
alternative method

75% of lamps shall be high efficacy

At unfinished basement, no
foundation wall insulation

R-19 (vented crawlspace)

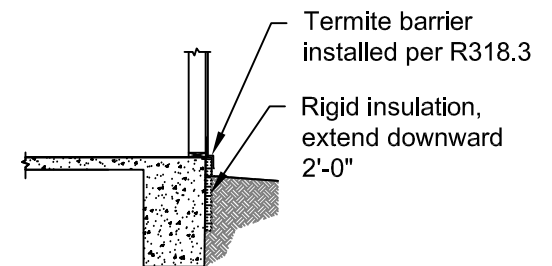
R-10 to R-13 wall @
unvented crawl space

Joist

* Water pipe insulation
required on hot water
recirculation systems and
mechanical piping only

1,500 SF or less - 4" dia.
 1,501 - 2,400 SF - 6" dia
 2,401 SF or more - 8" dia

with balancing damper and
connected to return air or HVAC
unit ahead of filter



REQUIRED