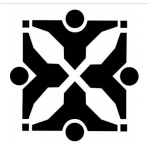
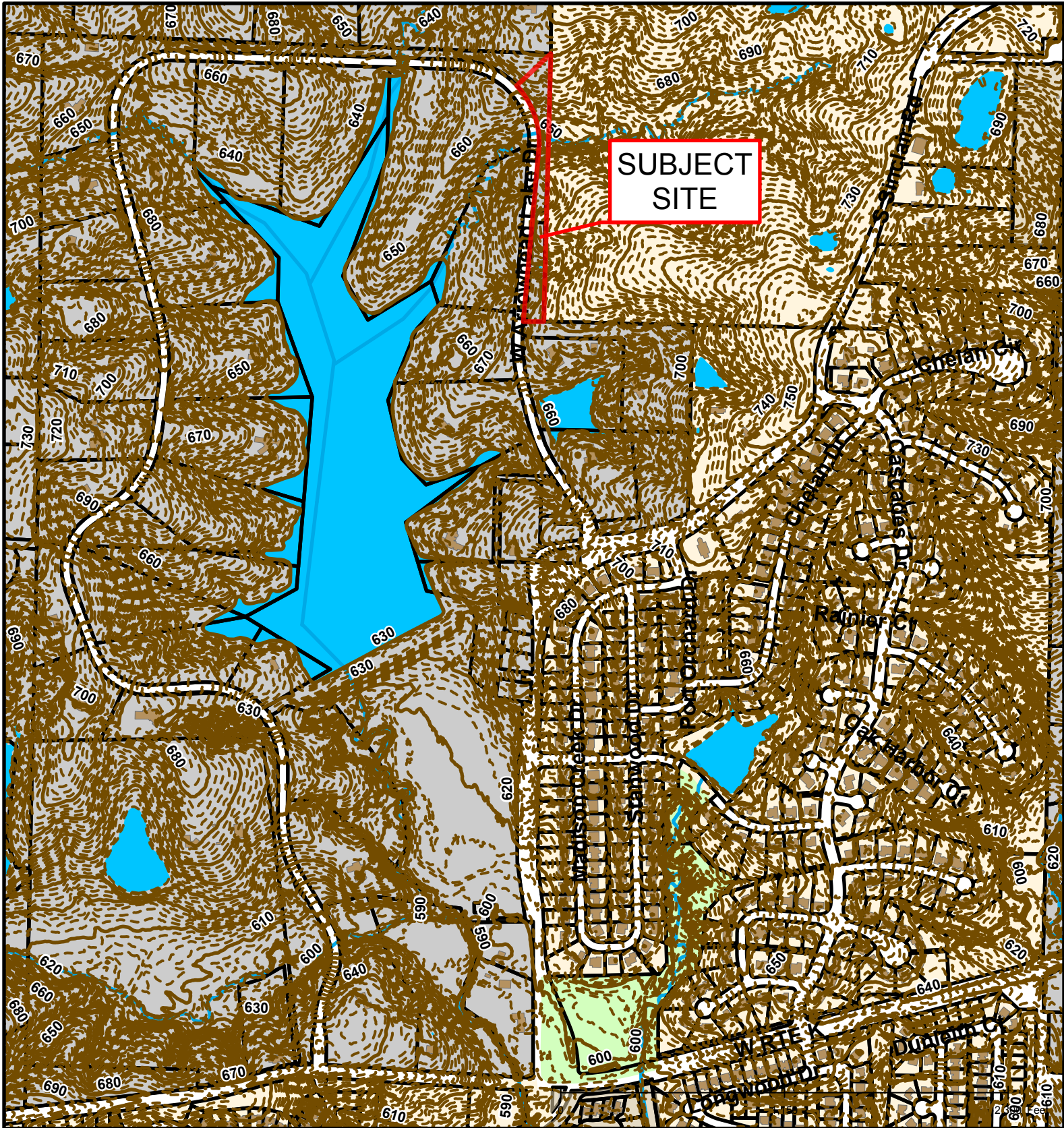


# #17-156: Arrowhead Lake Estates Plat 3 Annexation & Permanent Zoning

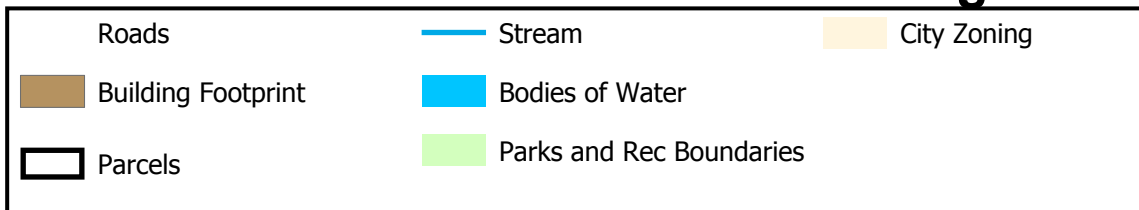
	Roads		Boone County Zoning
	City Zoning		Columbia City Limit
	Parcels		CityViewparcels







## #17-156: Arrowhead Lake Estates Plat 3 Annexation & Permanent Zoning



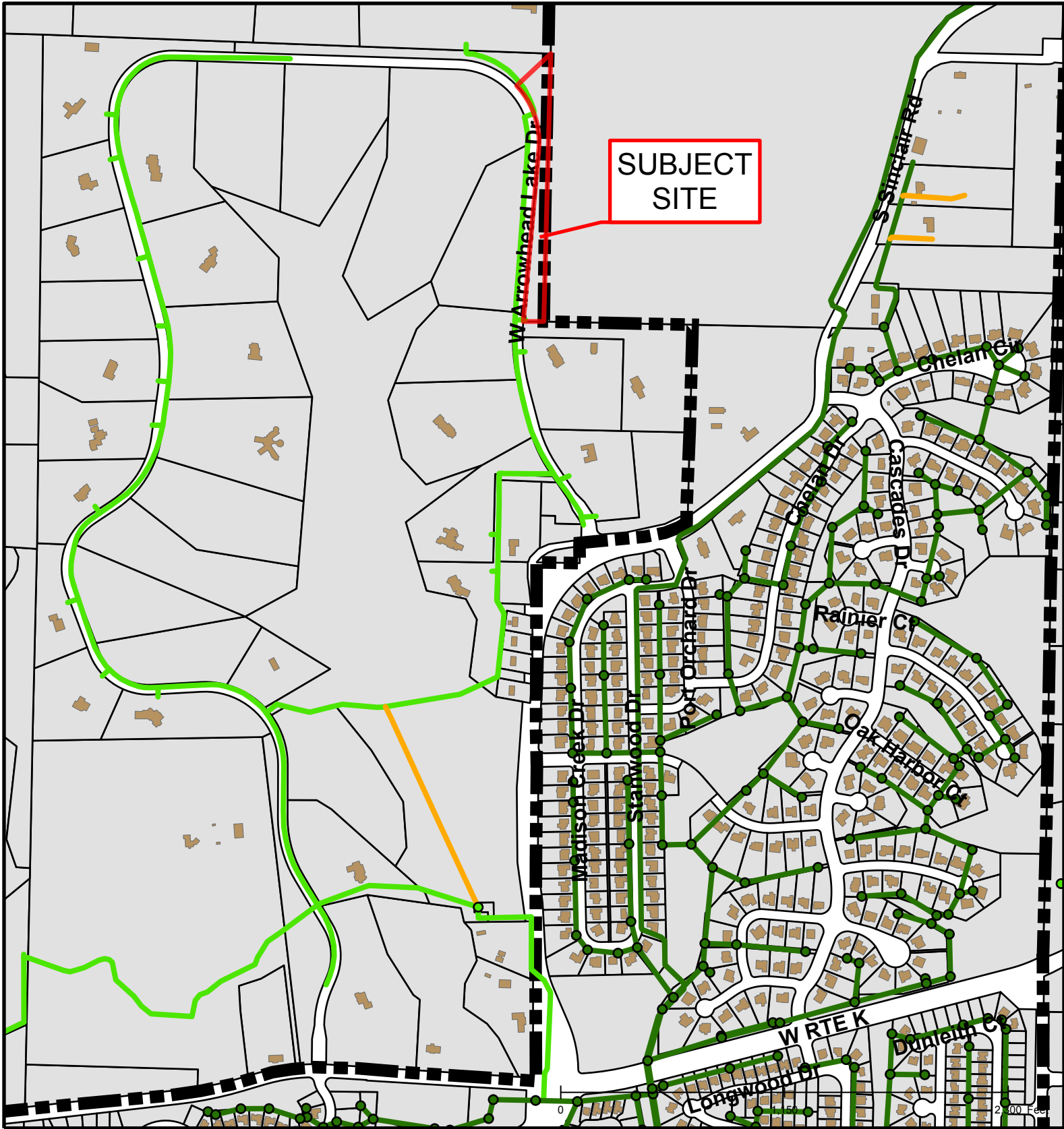
Created by The City of Columbia - Community Development Department

Parcel Data Source: Boone County Assessor

2015 Imagery: Boone County Assessor's Office

Hillshade Data: Boone County GIS Office





## #17-156: Arrowhead Lake Estates Plat 3 Annexation & Permanent Zoning

