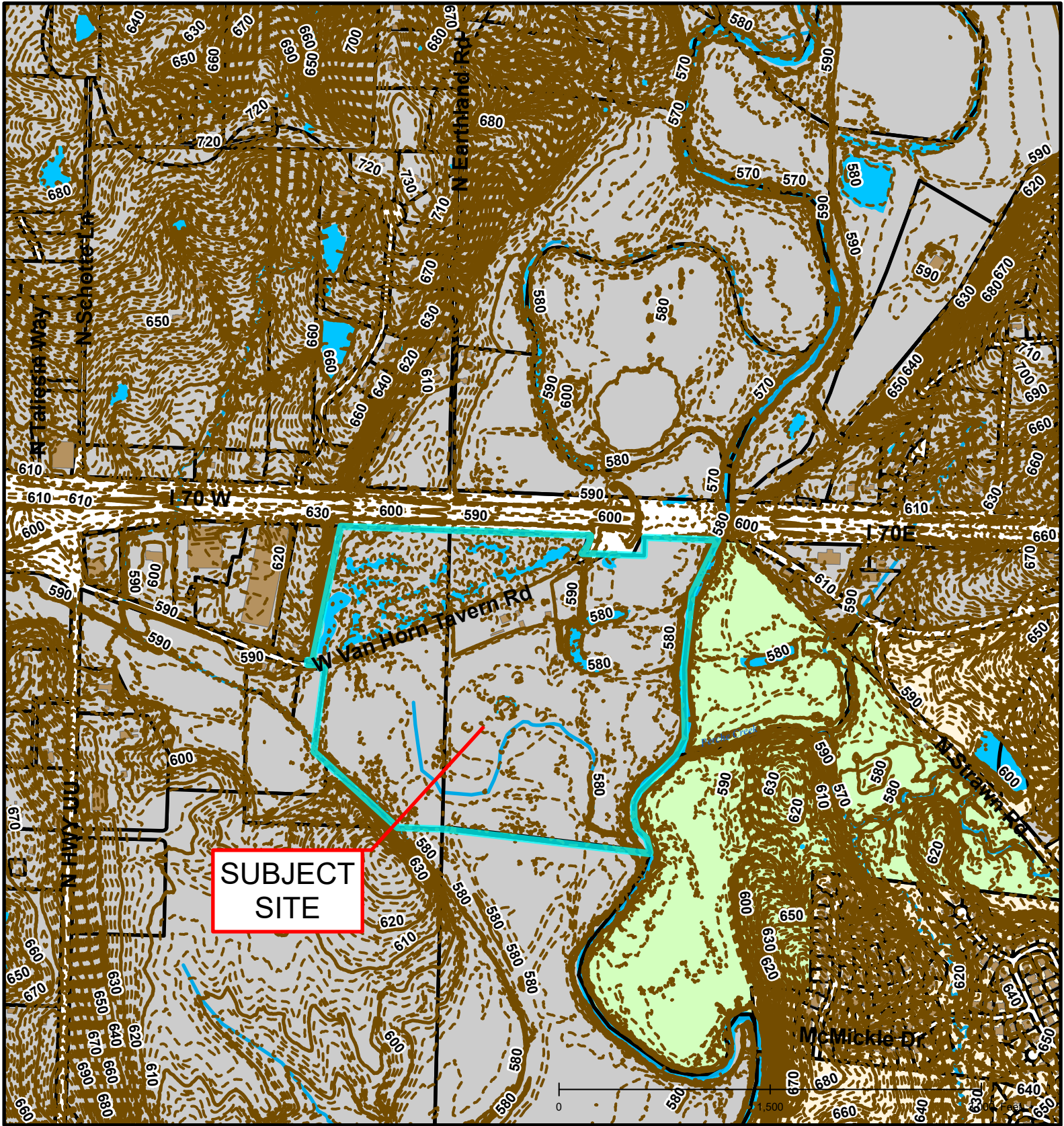
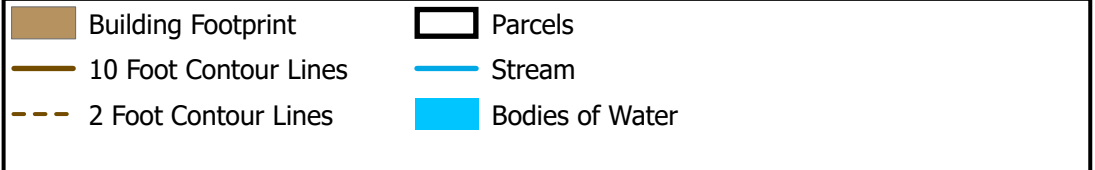


Case # 226-2021 - 5500 W. Van Horn Tavern Road Annexation





Case # 226-2021 - 5500 W. Van Horn Tavern Road Annexation

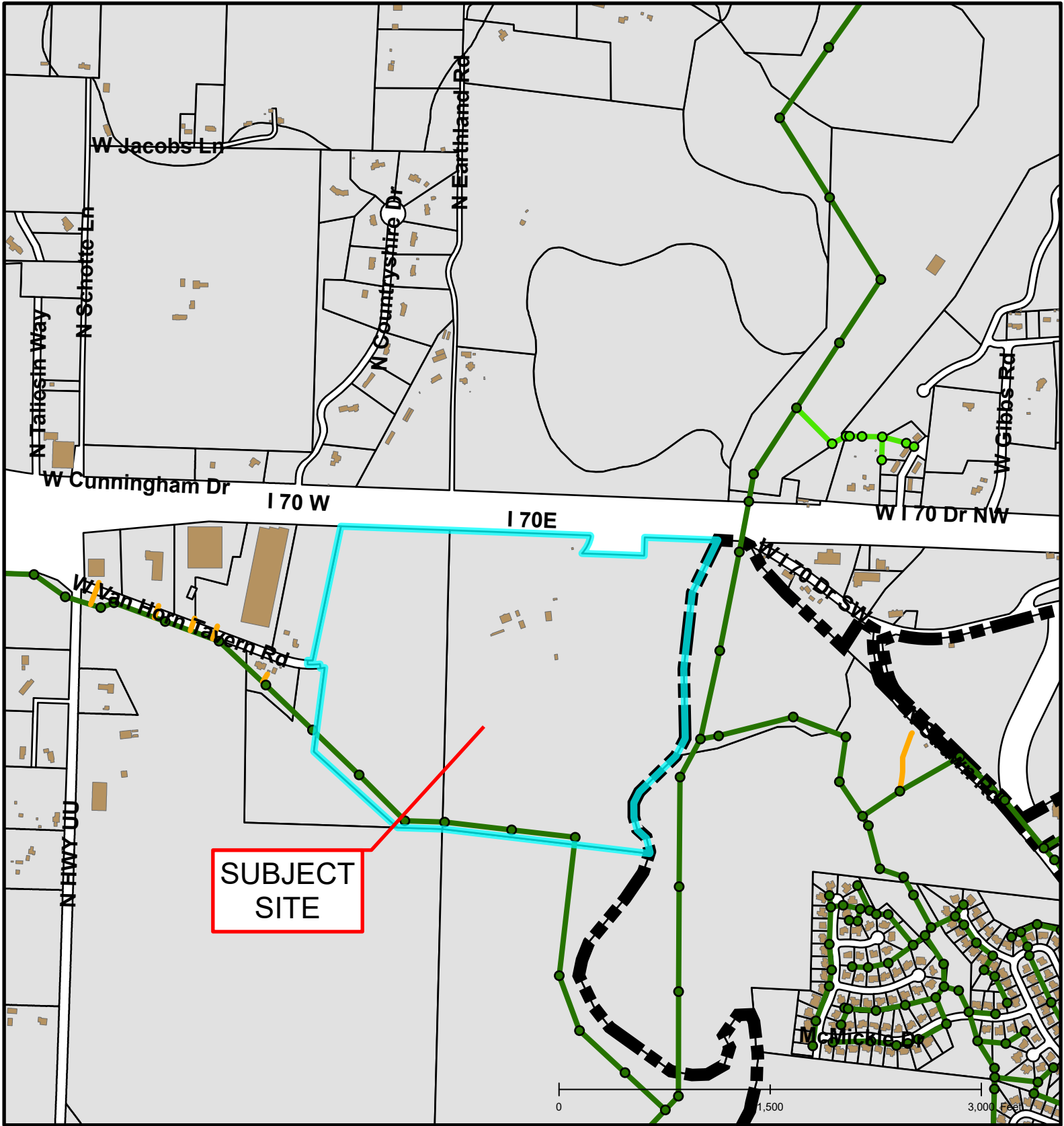


Created by The City of Columbia - Community Development Department

Parcel Data Source: Boone County Assessor

2017 Imagery: Boone County Assessor's Office

Hillshade Data: Boone County GIS



Case # 226-2021 - 5500 W. Van Horn Tavern Road Annexation

