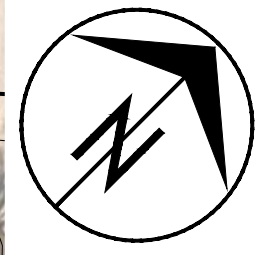
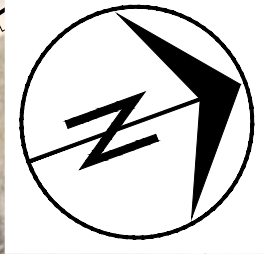
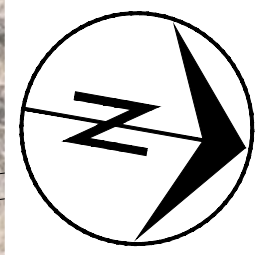


c:\users\j\documents\traffic\calming\hanover_bld\calming.dwg



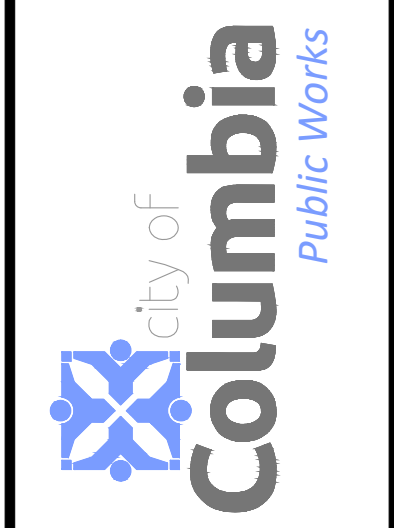
No.	Date	By	Revision

HANOVER BLVD TRAFFIC CALMING

Clark Lane to 1710 Hanover Boulevard

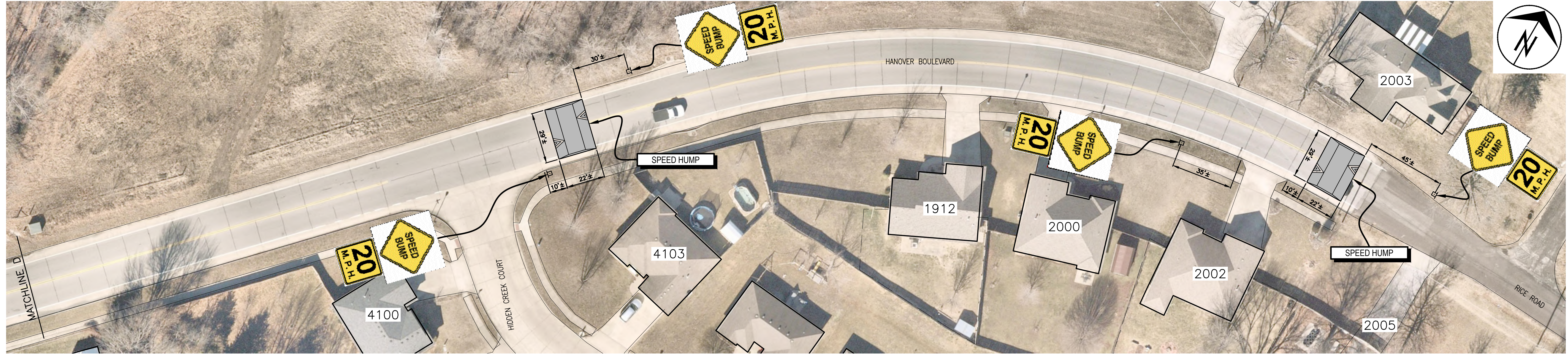
Mission
Provide safe, sustainable infrastructure that promotes positive communities.

701 East Broadway
P.O. Box 6015
Columbia, MO 65205
(573) 875-2493



Shane Steven Creech
Registered Professional Engineer
PE-2007011061

File No.	----
Scale:	1" = 30'
Date:	2/12/2024
Des.	A.S.B.
Dwn.	A.S.B.
Chk.	J.D.R.



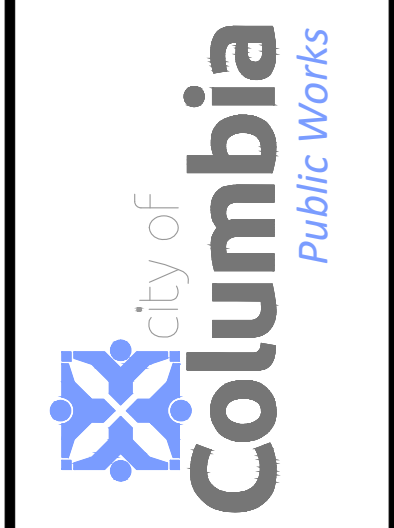
Revision	By	Date	No.

HANOVER BLVD TRAFFIC CALMING

1717 Hanover Boulevard to Rice Road

Mission
Provide safe, sustainable infrastructure that promotes positive communities.

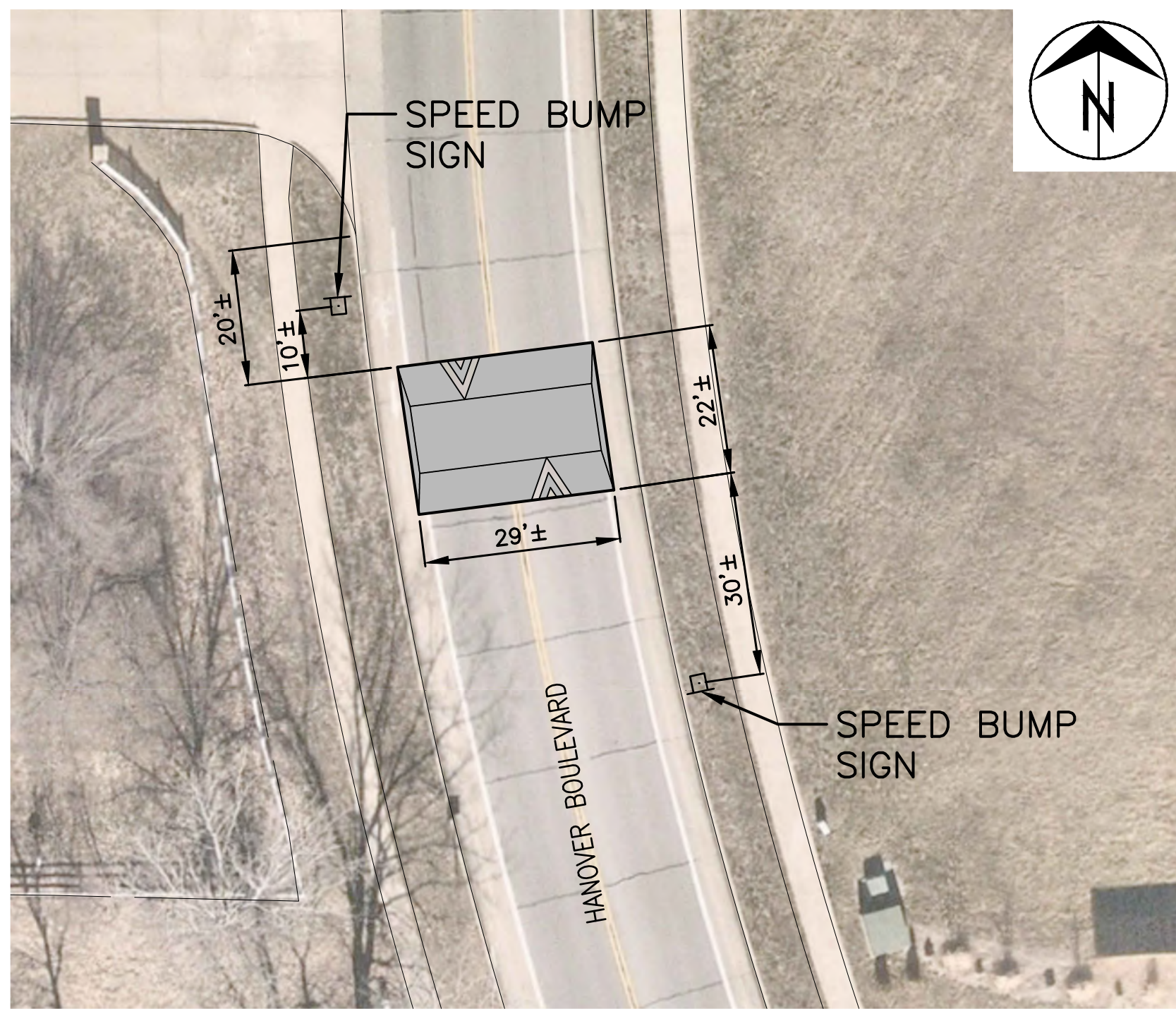
701 East Broadway
P.O. Box 6015
Columbia, MO 65205
(573) 875-2493



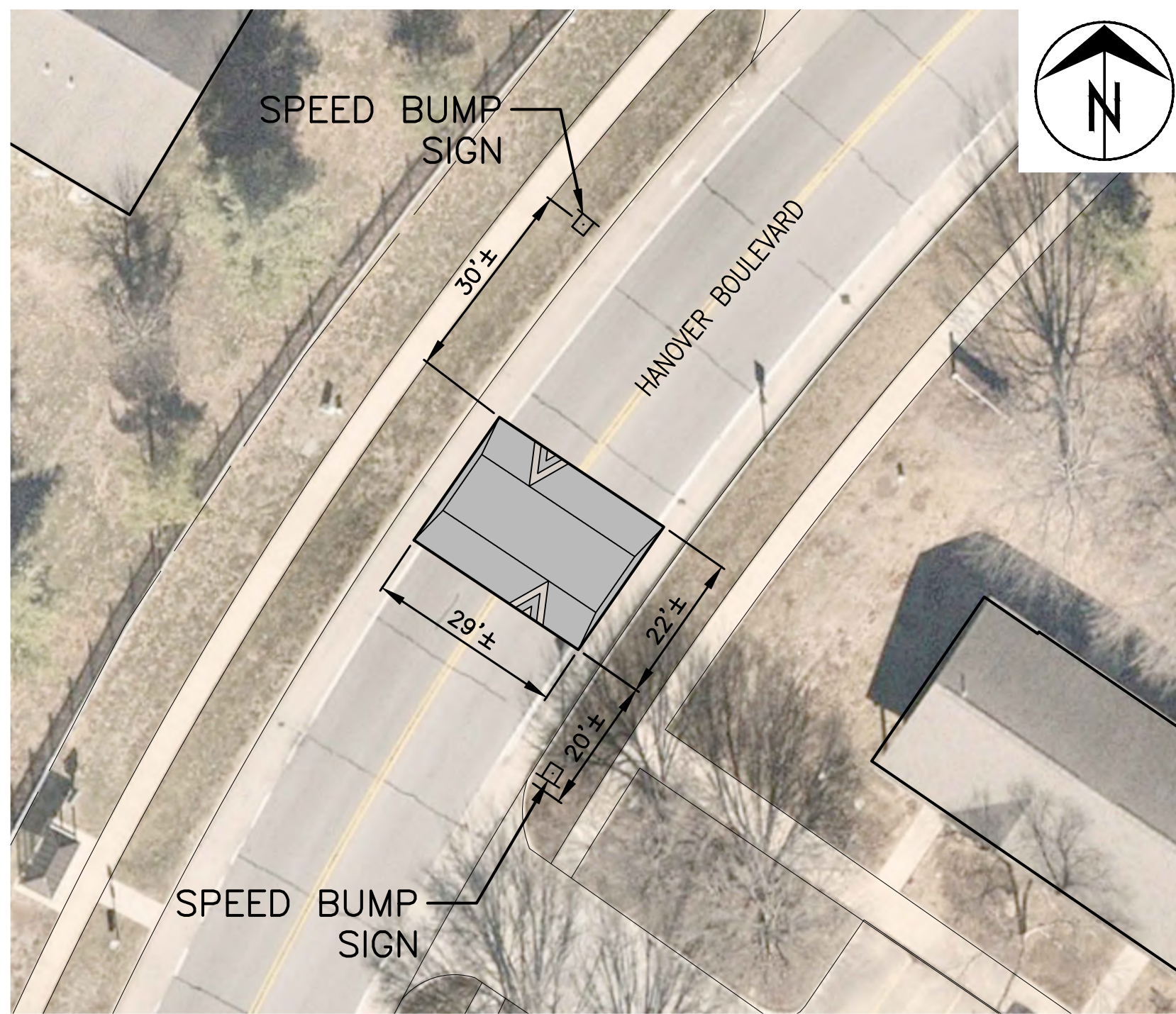
Shane Steven Creech
Registered Professional Engineer
PE-2007011061

File No. ---
Scale: 1" = 30'
Date: 2/12/2024
Des. A.S.B.
Dwn. A.S.B.
Chk. J.D.R.

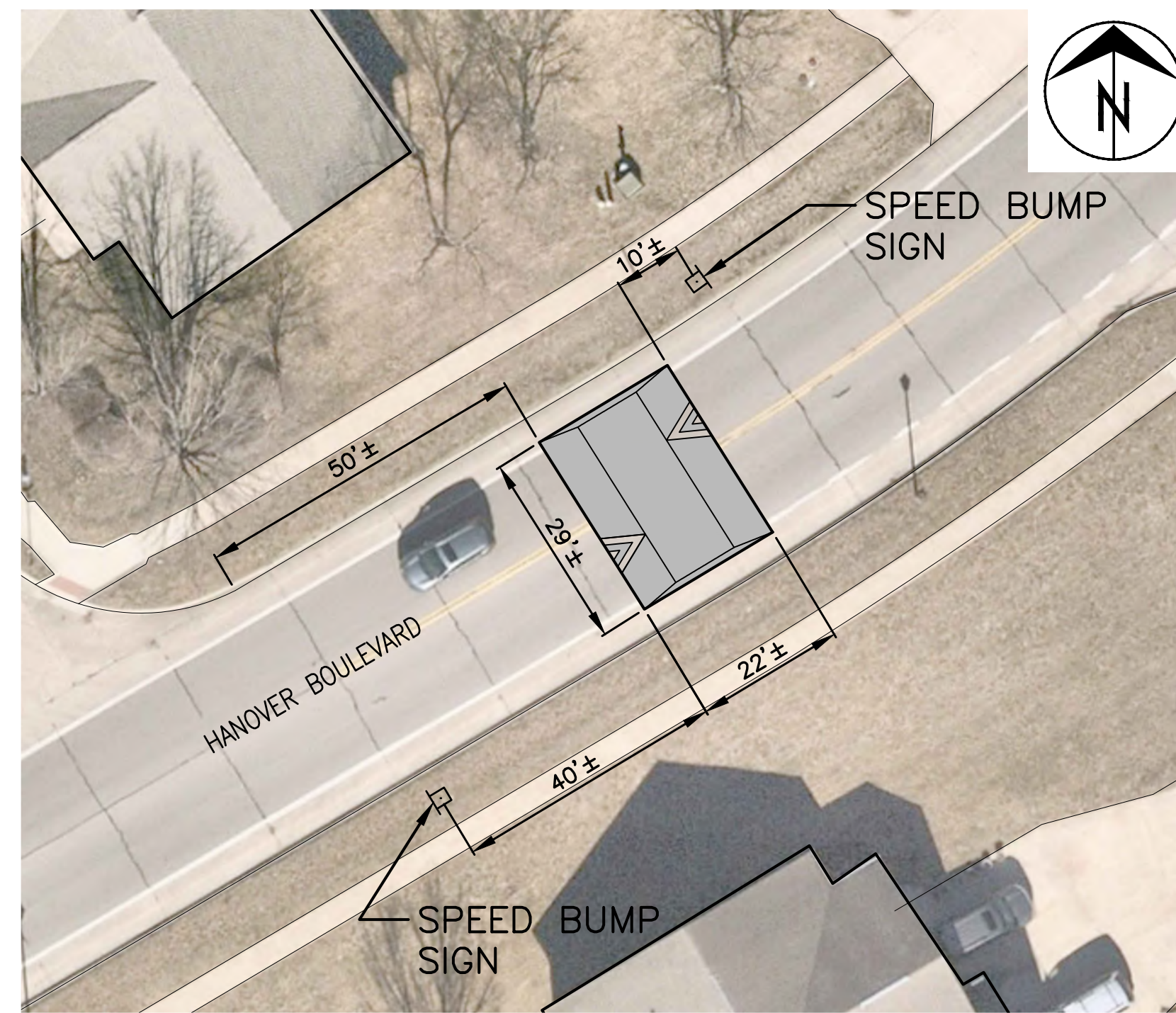
o:\caddpro\traffic\calming\hanover_bld\calming.dwg



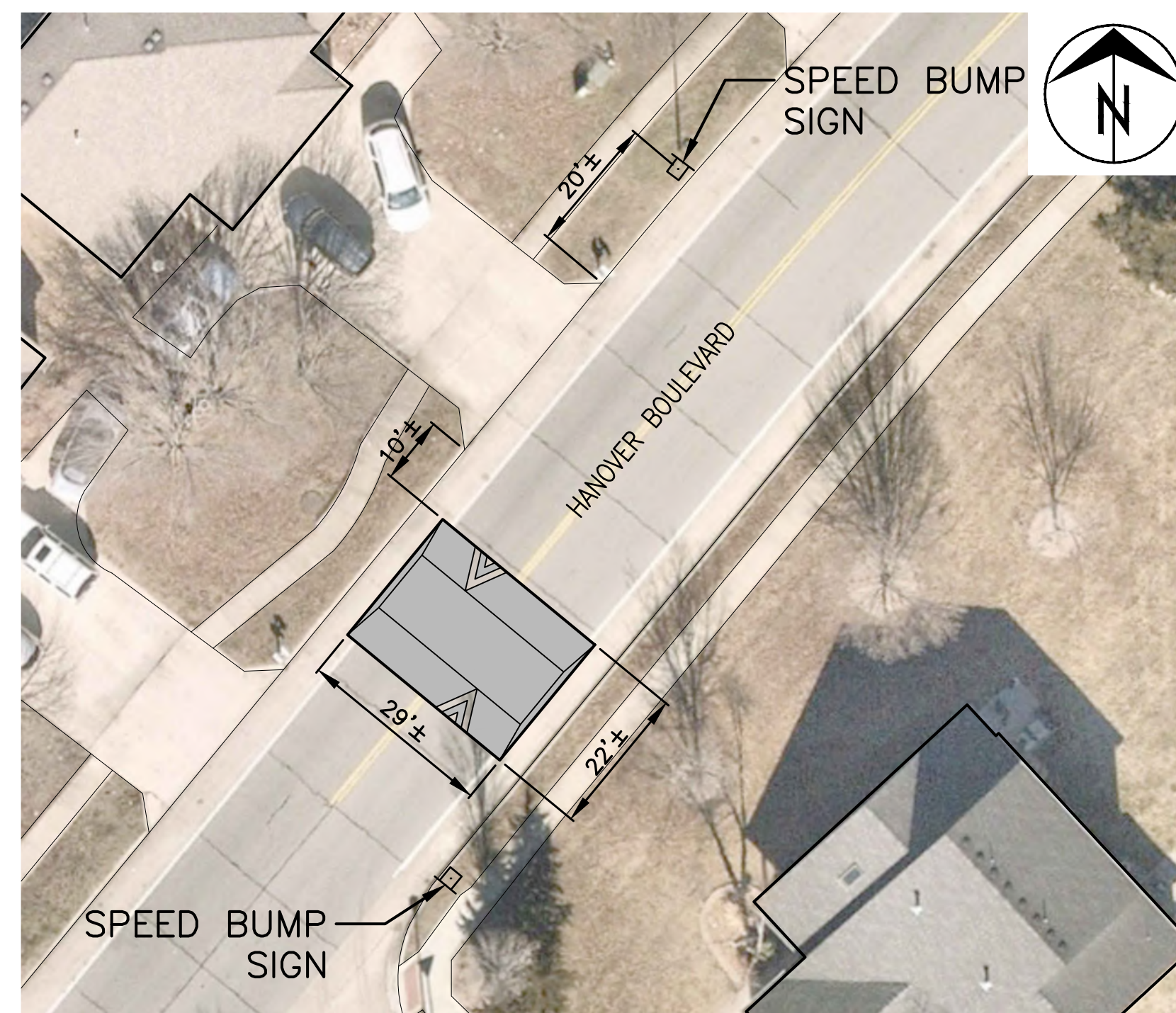
1510 HANOVER BOULEVARD
1" = 20'



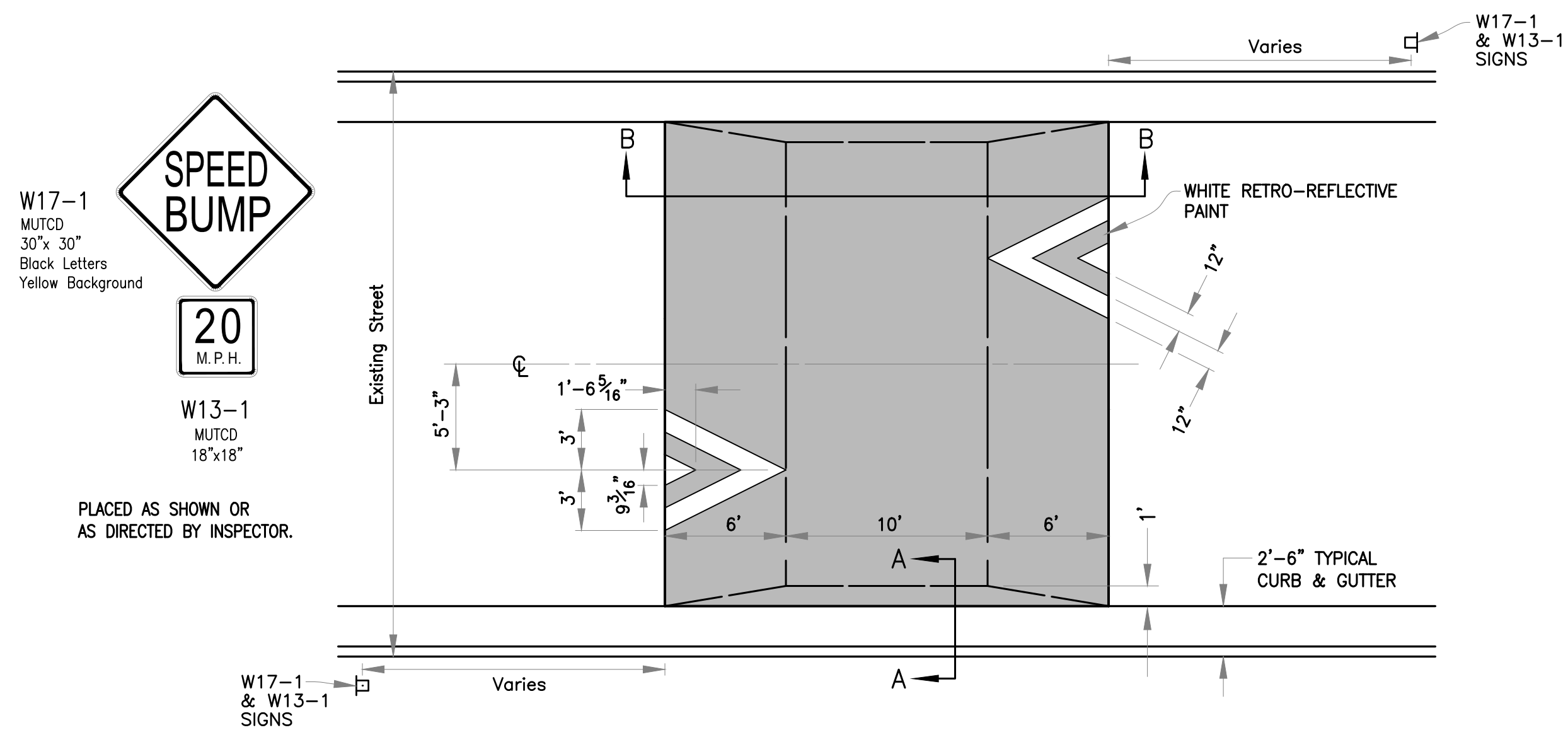
1600 HANOVER BOULEVARD
1" = 20'



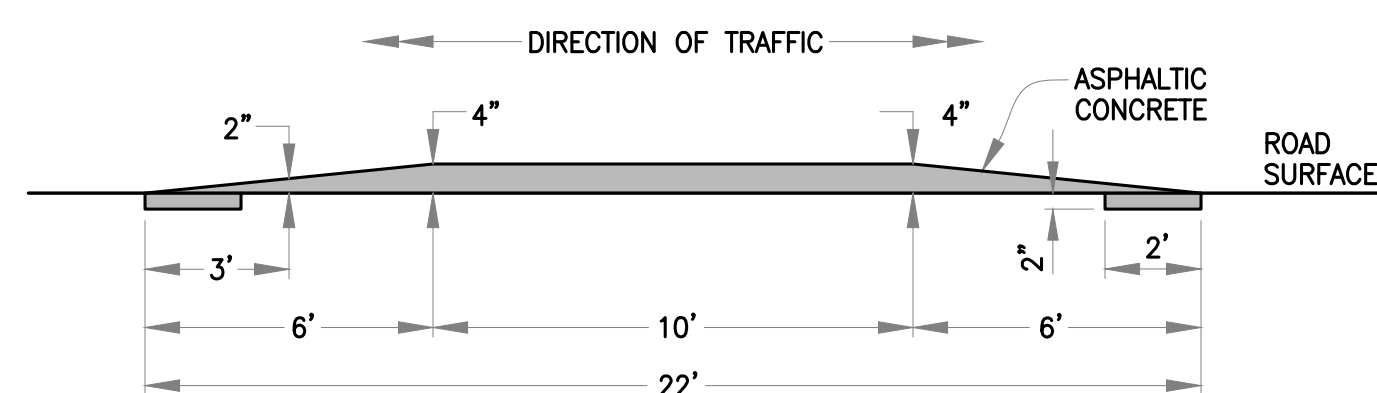
1611 HANOVER BOULEVARD
1" = 20'



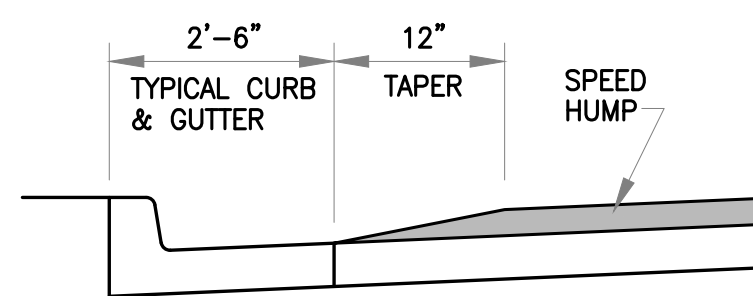
1703 HANOVER BOULEVARD
1" = 20'



PLAN
NOT TO SCALE



SECTION B-B
NOT TO SCALE



SECTION A-A
NOT TO SCALE

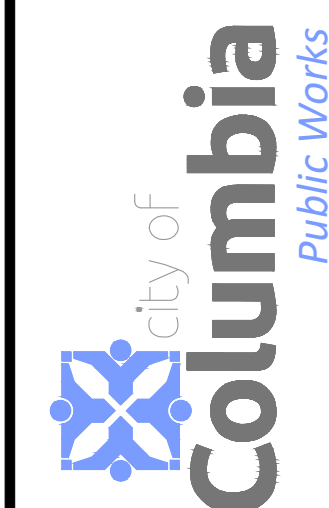
SPEED HUMP
NOT TO SCALE

Revision	
By	
Date	
No.	

HANOVER BLVD TRAFFIC CALMING
Speed Humps - Clark Ln. to 1710 Hanover Blvd.

Mission
Provide safe, sustainable infrastructure that promotes positive communities.

701 East Broadway
P.O. Box 6015
Columbia, MO 65205
(573) 875-2489

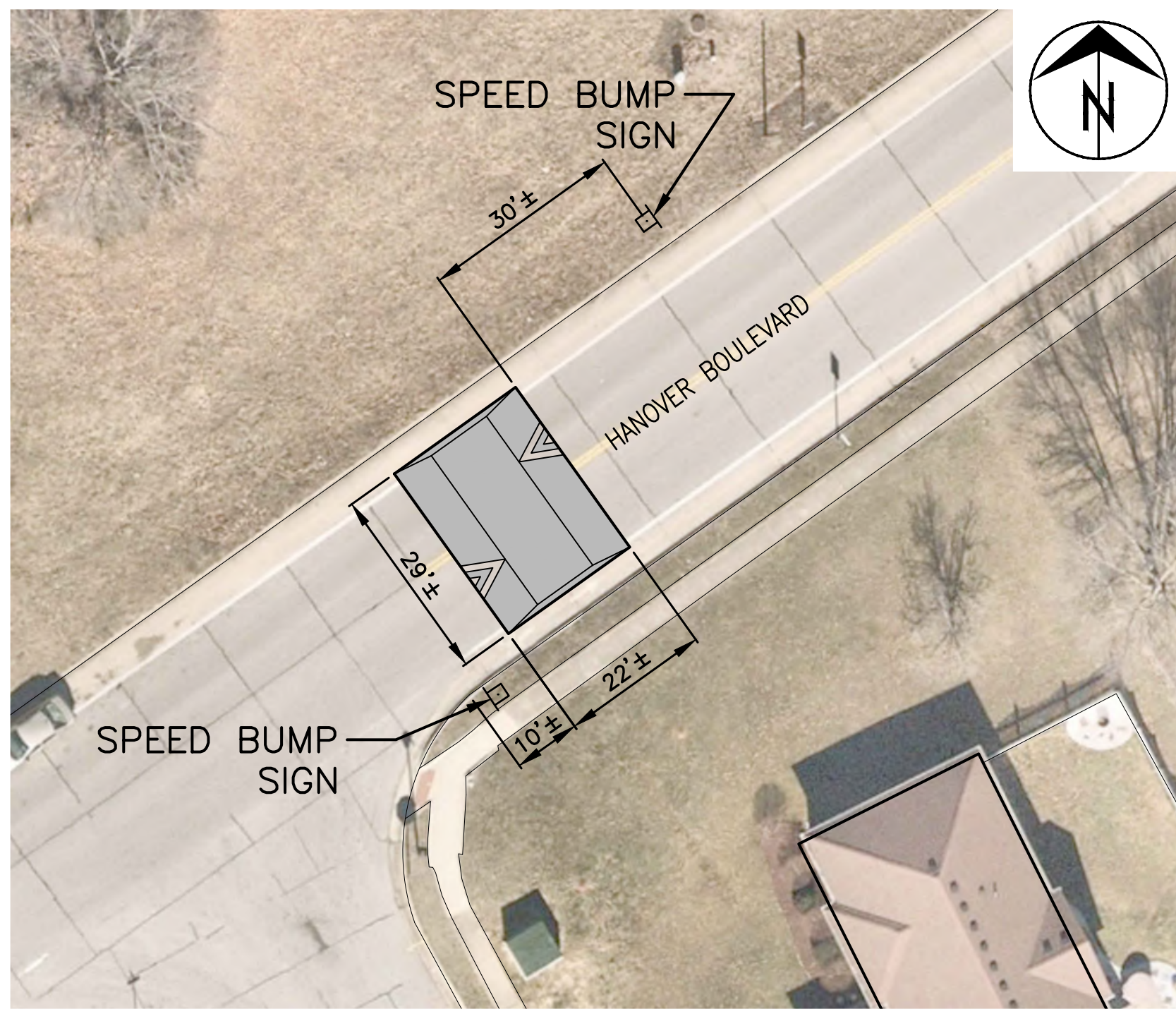


Shane Steven Creech
Registered Professional Engineer
PE-2007011061

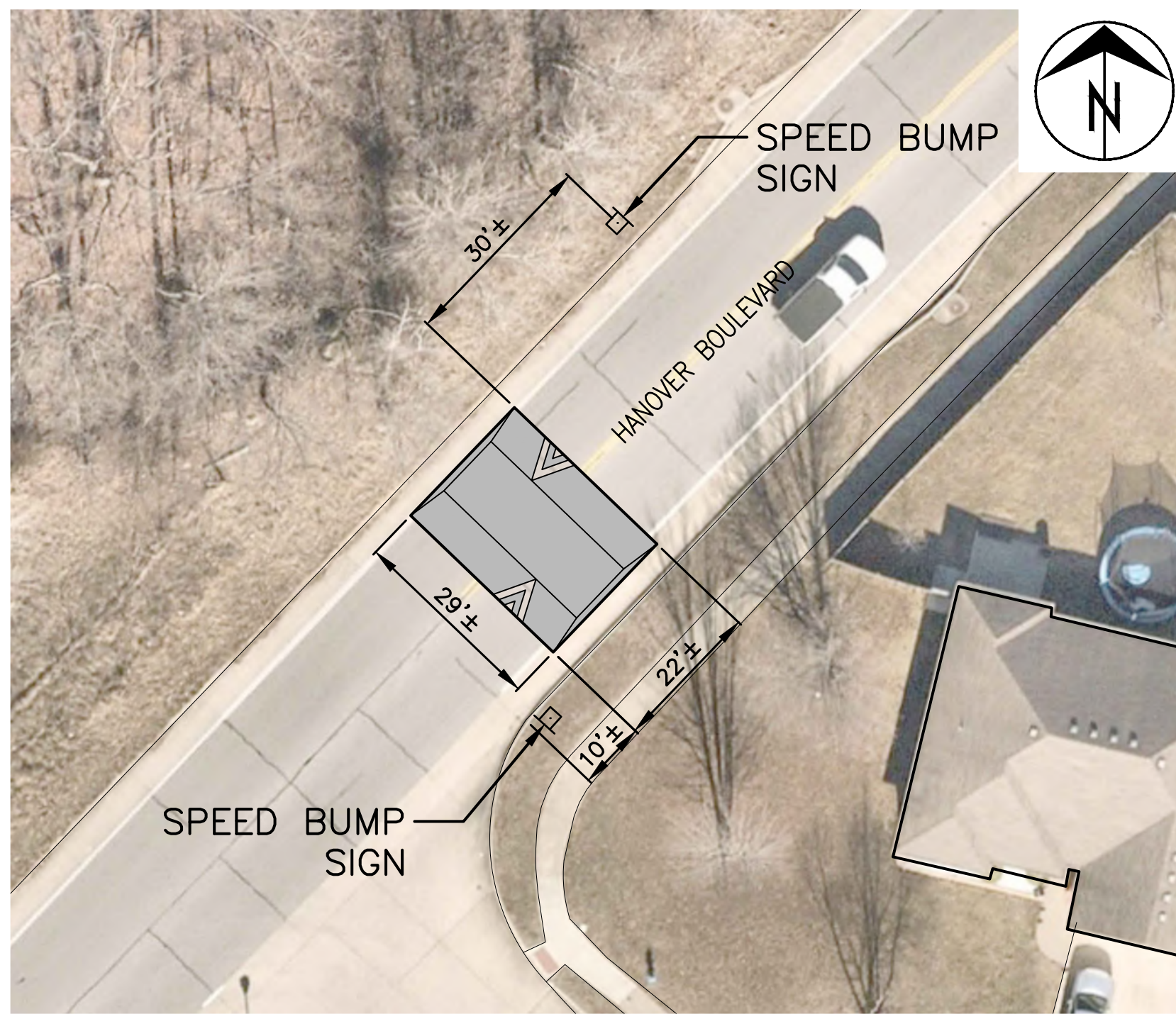
File No.	----
Scale:	As Shown
Date:	2/12/2024
Des.	A.S.B.
Dwn.	A.S.B.
Chk.	J.D.R.

o:\external\traffic\calming\hanover_bldv_calming.dwg

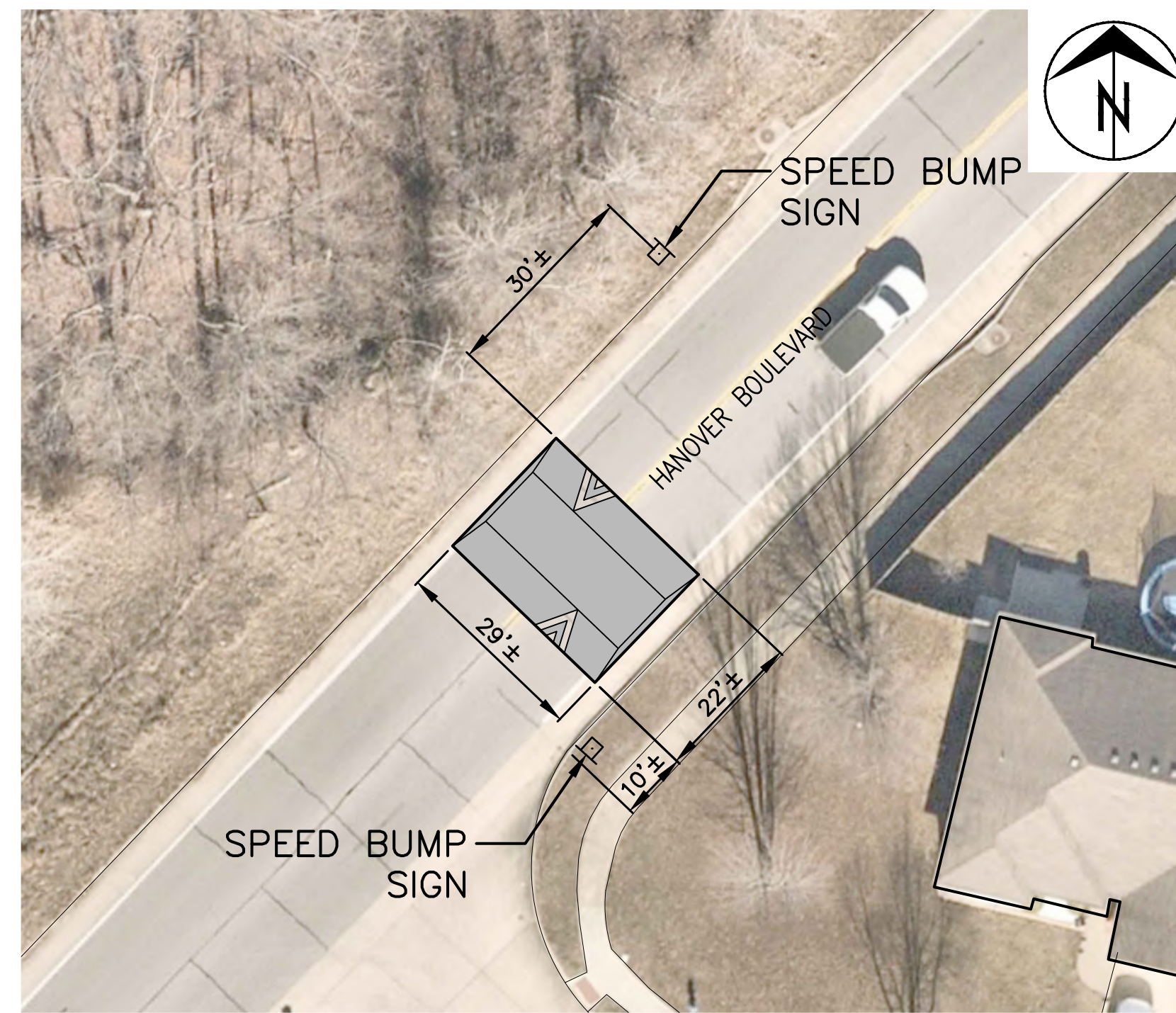
2015 Orthophoto Source: Boone County Assessor



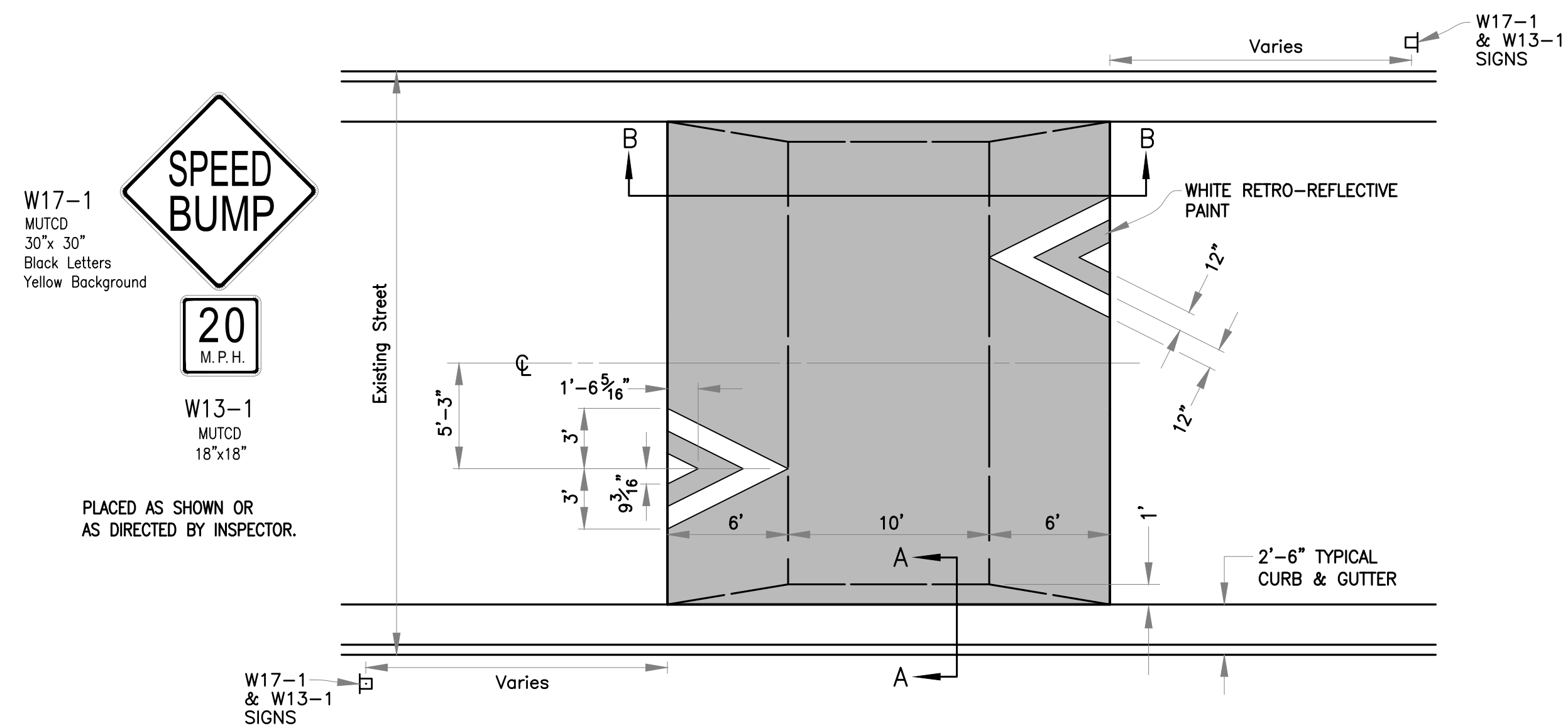
OLYMPIC BOULEVARD
1" = 20'



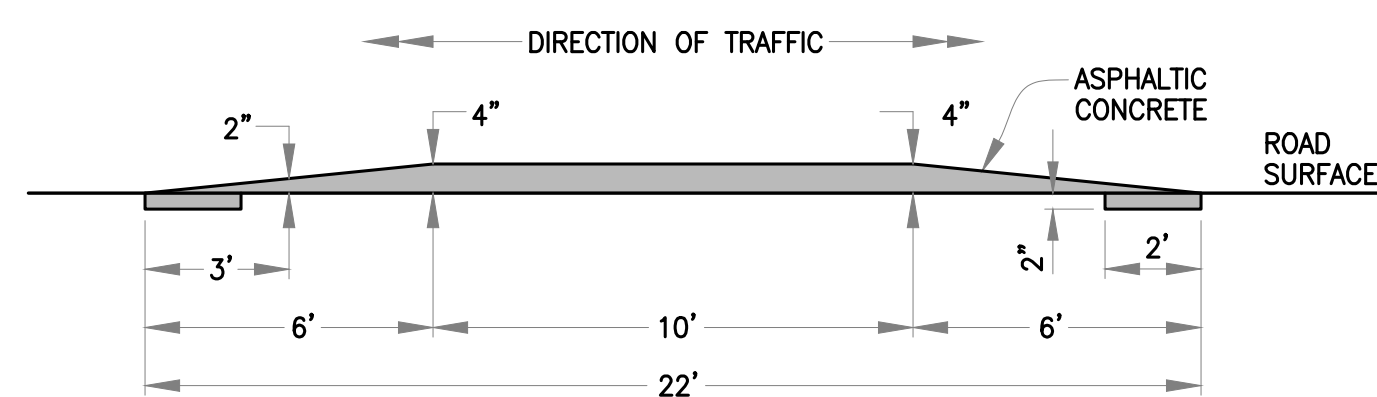
NORTH CHARLESTON CIRCLE
1" = 20'



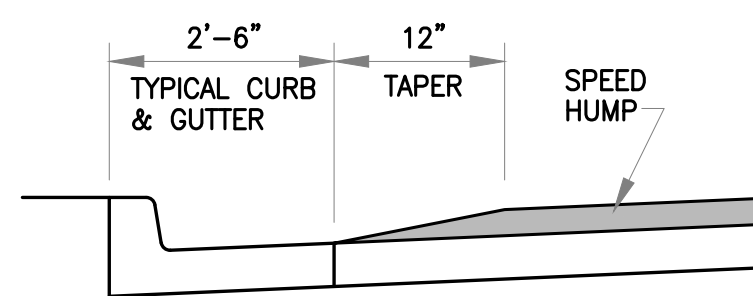
HIDDEN CREEK COURT
1" = 20'



PLAN
NOT TO SCALE

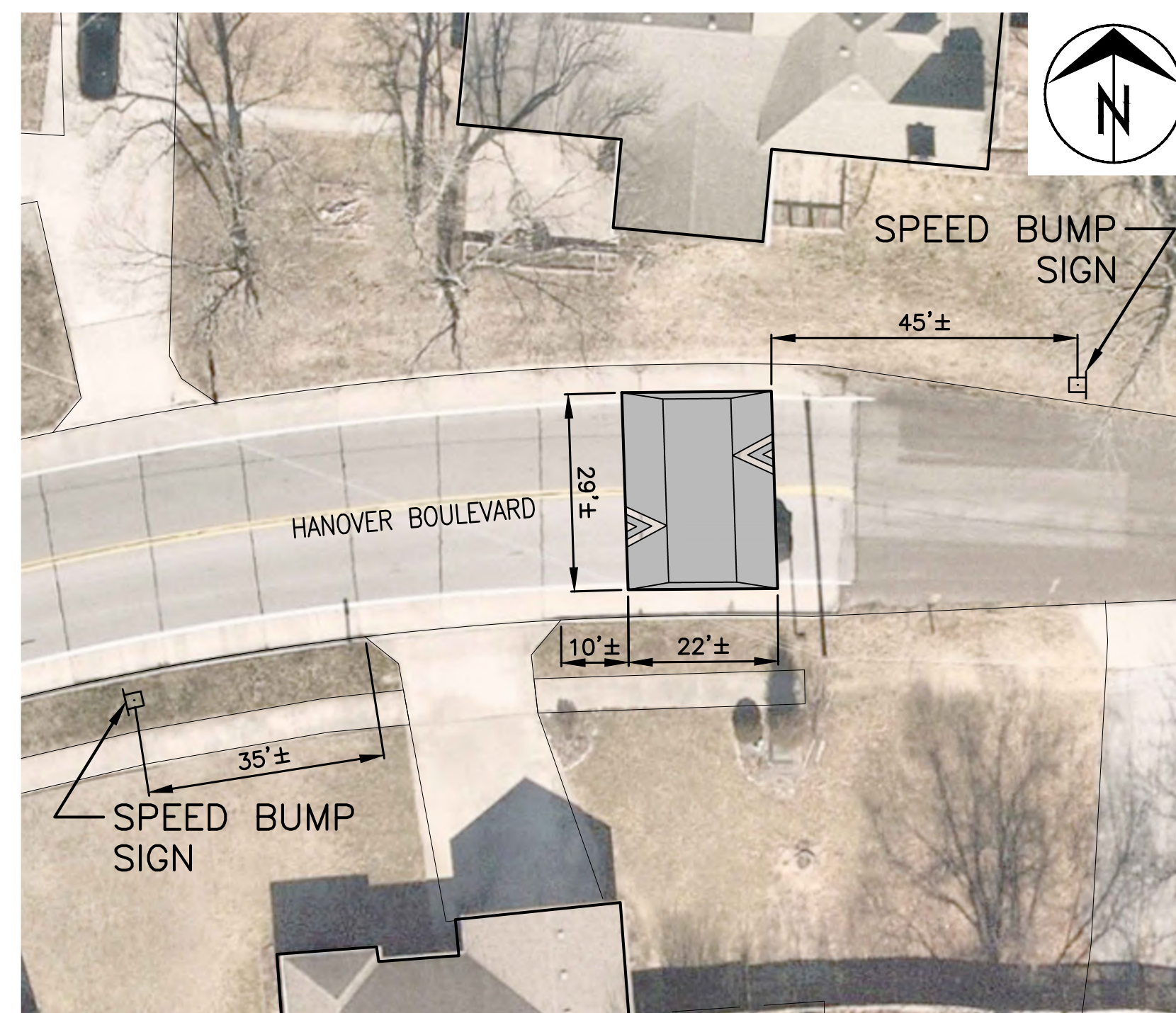


SECTION B-B
NOT TO SCALE



SECTION A-A
NOT TO SCALE

SPEED HUMP
NOT TO SCALE



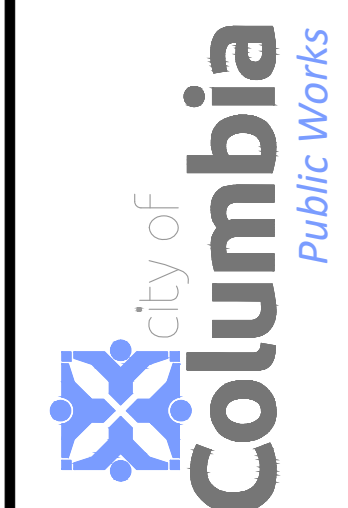
2002 HANOVER BOULEVARD
1" = 20'

Revision	
By	
Date	
No.	

HANOVER BLVD TRAFFIC CALMING
Speed Humps - 1717 Hanover Blvd. to Rice Rd.

Mission
Provide safe, sustainable infrastructure that promotes positive communities.

701 East Broadway
P.O. Box 6015
Columbia, MO 65205
(573) 875-2493



Shane Steven Creech
Registered Professional Engineer
PE-2007011061

File No.	----
Scale:	As Shown
Date:	2/12/2024
Des.	A.S.B.
Dwn.	A.S.B.
Chk.	J.D.R.

o:\caddres\traffic\calming\hanover_bld\calming.dwg

2015 Orthophoto Source: Boone County Assessor