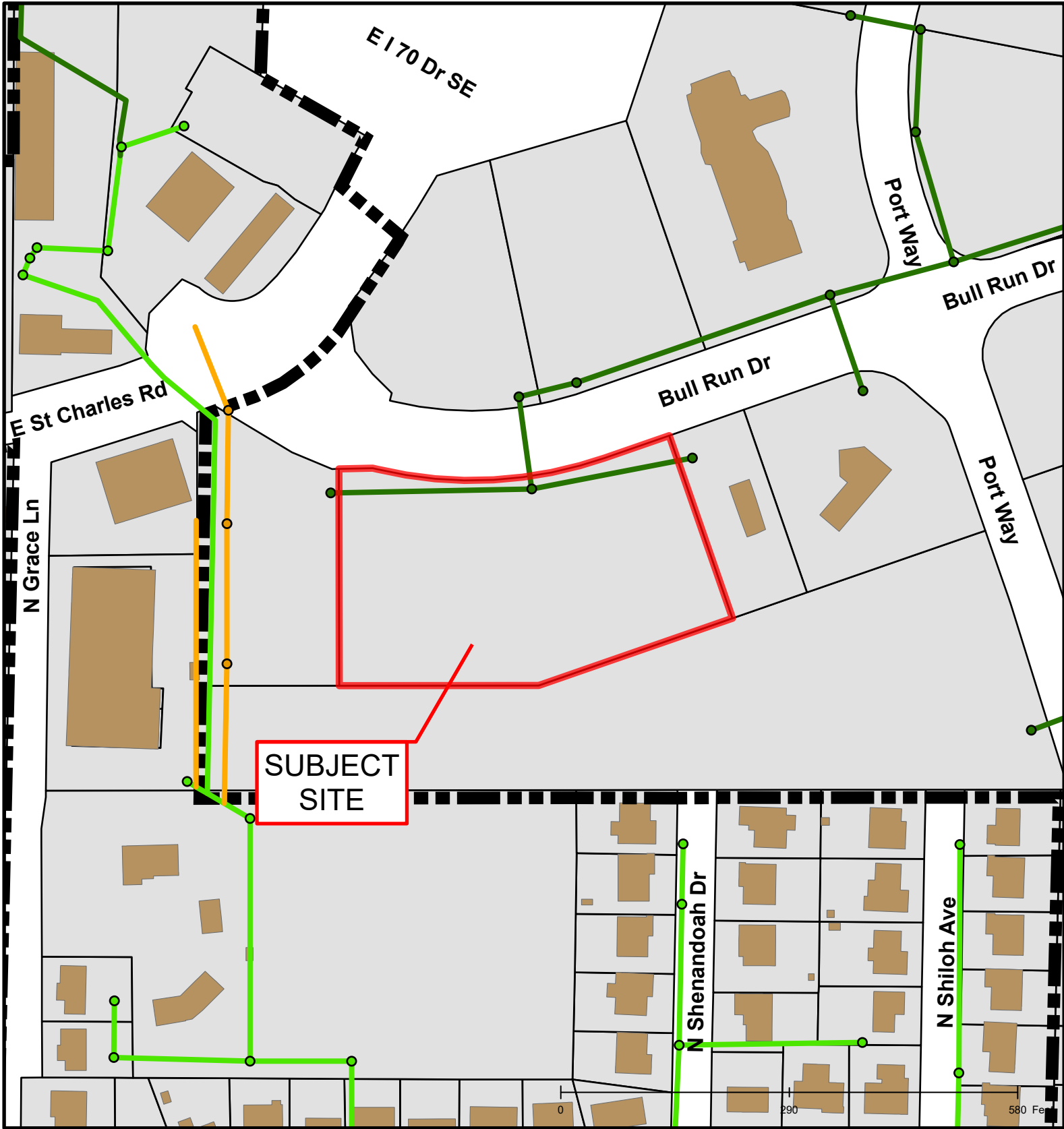


SUBJECT SITE







Case # 193-2021: 5530 Bull Run Rezoning

City Zoning	Boone County Zoning
Parcels	Columbia City Limit

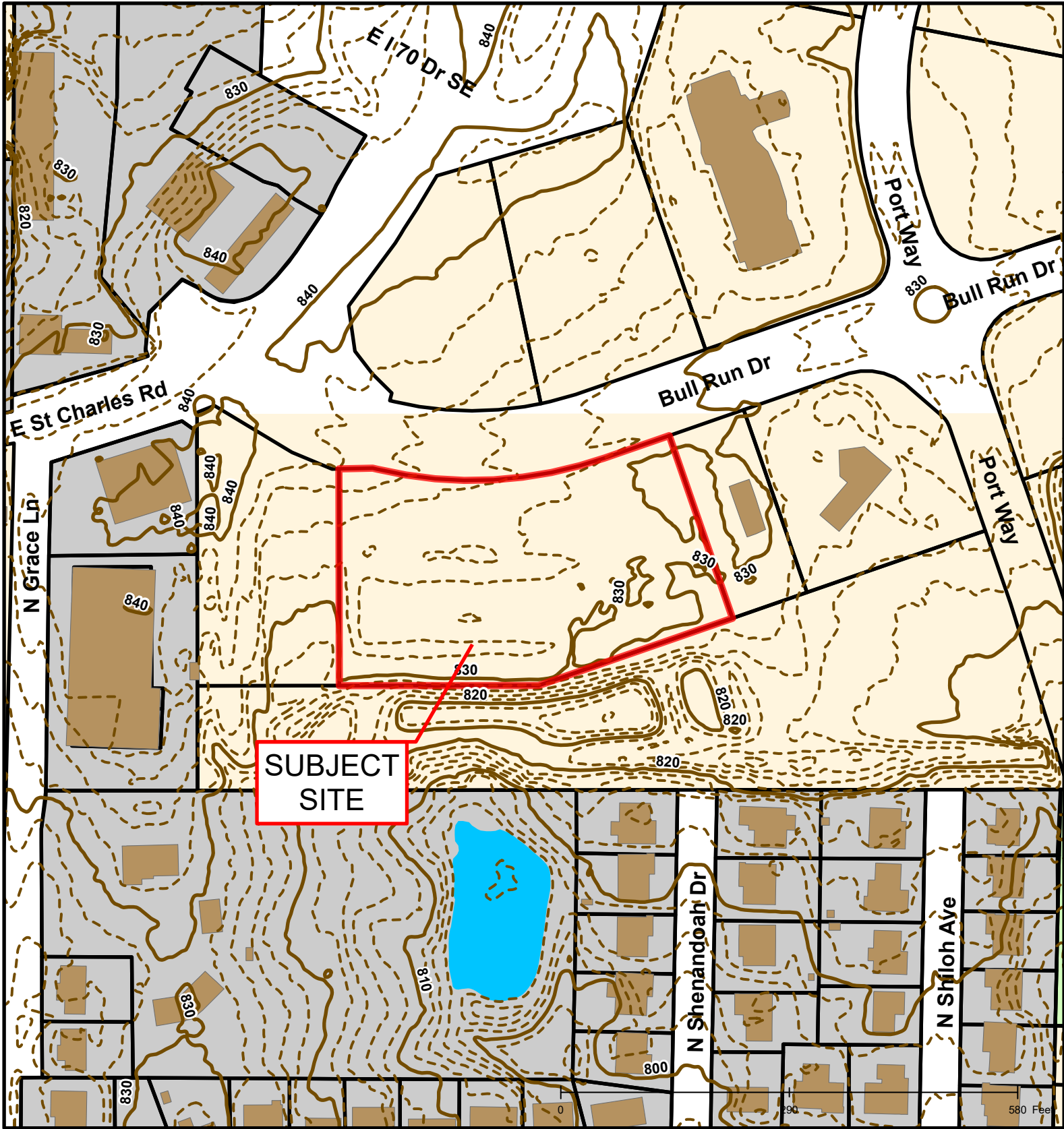




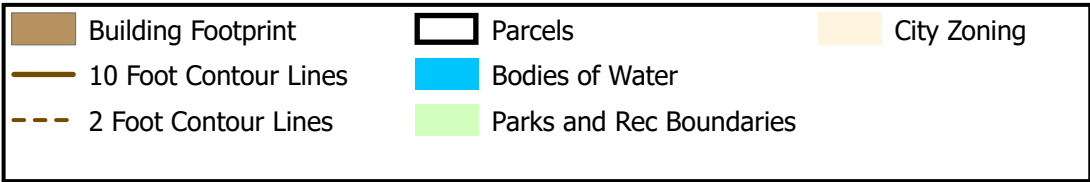
Case # 193-2021: 5530 Bull Run Rezoning

	BCRSD		BCRSD
	City Sanitary Structure		City Sanitary Line
	Private Sanitary Structure		Private Sanitary Line





Case # 193-2021: 5530 Bull Run Rezoning



Created by The City of Columbia - Community Development Department

Parcel Data Source: Boone County Assessor

2017 Imagery: Boone County Assessor's Office

Hillshade Data: Boone County GIS