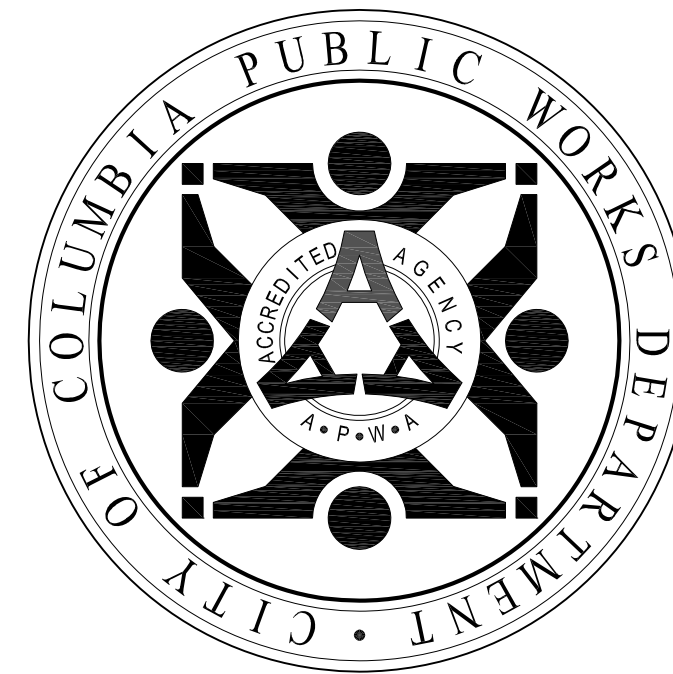
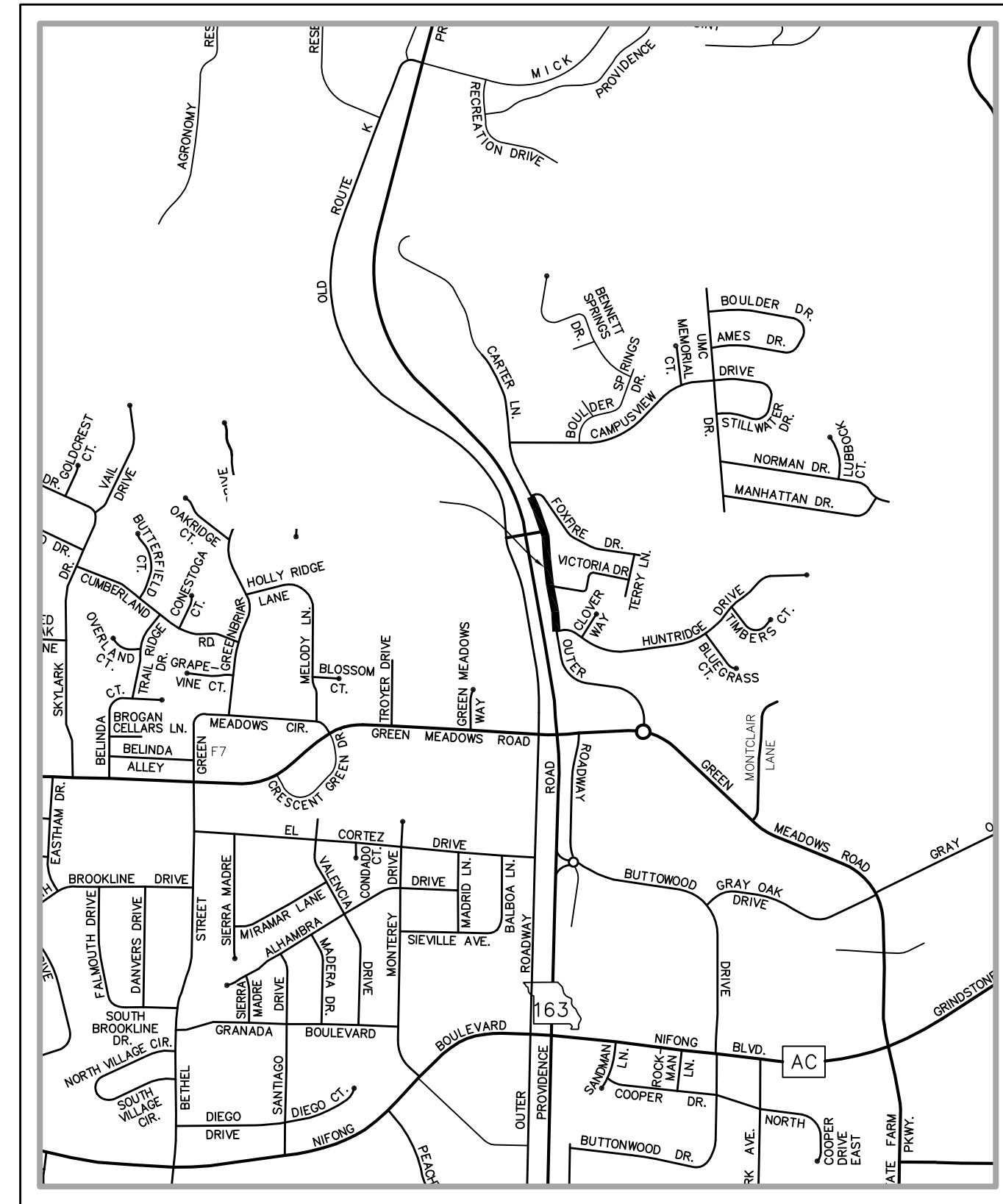


City of Columbia, Missouri

Department of Public Works



CARTER LANE SIDEWALK



Not to Scale

GENERAL NOTES

- All construction to be in accordance with "City of Columbia Street, Storm Drain and Sanitary Sewer Specifications and Standards" (Current edition).
- Known underground utilities are shown in their approximate locations. Other utilities may exist.
- All removal of driveway pavements should be verified by field engineer.
- All excavation to be in accordance with Sections 319.010-319.050, Revised Statutes of the State of Missouri. Such compliance shall not, however, excuse any person making any excavation from doing so in a careful and prudent manner, nor shall it excuse such person from liability for any damage or injury to underground utilities resulting from the excavation.
- Erosion Control shall be installed per plans and TS-2 & 3 prior to any construction activities.
- Remove all pavement surfaces, inlets, pipes and sidewalks within the construction limits as per TS-5, except those noted to remain. The field inspector shall verify removal.
- Removal of trees and bushes shall be verified by field inspectors. Install tree protection fence per plans and exercise caution when working near the construction limits to minimize disturbance to adjacent trees and shrubs that are not being removed by construction activities.
- No open trenches will be allowed overnight outside of the "road closed" area. Asphaltic "cold mix" shall be used as a temporary patch overnight. Temporary patching shall be considered incidental to the work.

UTILITY COMPANIES:

TELEPHONE
CenturyLink
625 Cherry Street
Columbia, MO 65205
573-886-3500

NATURAL GAS
Ameren Missouri
2001 Maguire Boulevard
Columbia, MO 65201
573-876-3063

CABLE TELEVISION
Mediacom
901 N. College Avenue
Columbia, MO 65201
573-443-1536 ext 354

LOCATES
Missouri One Call Inc.
1022 B Northeast Drive
Jefferson City, MO 65109
1-800-344-7483

WATER
City of Columbia
P.O. Box 6015
City Utilities
Columbia, MO 65205
573-874-7250

ELECTRIC
City of Columbia
P.O. Box 6015
City Utilities
Columbia, MO 65205
573-874-7250

SANITARY SEWER
City of Columbia
P.O. Box 6015
City Utilities
Columbia, MO 65205
573-874-7250

INDEX OF SHEETS	
Description	Sheet No.
Cover Sheet	1
Summary of Quantities	2
Plan / Profile Sheets	3-4
Cross Section Sheet	5-7
Detail Sheet	8-9
Traffic Control Plan Sheet	
Erosion Control Plan Sheet	-
Storm and Driveway Profiles	-

BENCHMARKS:

- EL = 729.01 TP10 - A PK nail located in the sidewalk on the northeast corner of Parkade Blvd. and Garth Ave.
- EL = 707.55 TP11 - A PK nail located in the sidewalk on the southwest corner of Phyllis Ave. and Garth Ave.

TRAVERSE POINTS

#	NORTHING	EASTING	ELEVATION	DESCRIPTION
TP2	1142115.2768	1686651.3204	740.47	REBAR
TP10	1143619.2885	1686400.2388	729.01	PK NAIL
TP11	1143198.6278	1686341.9053	707.55	PK NAIL



① CONSTRUCT 4" THICK PCC SIDEWALK PER DETAIL 1, SHEET 8.

③ INSTALL CURB RAMP WITH DETECTABLE WARNING PER DETAIL 3, SHEET 8.

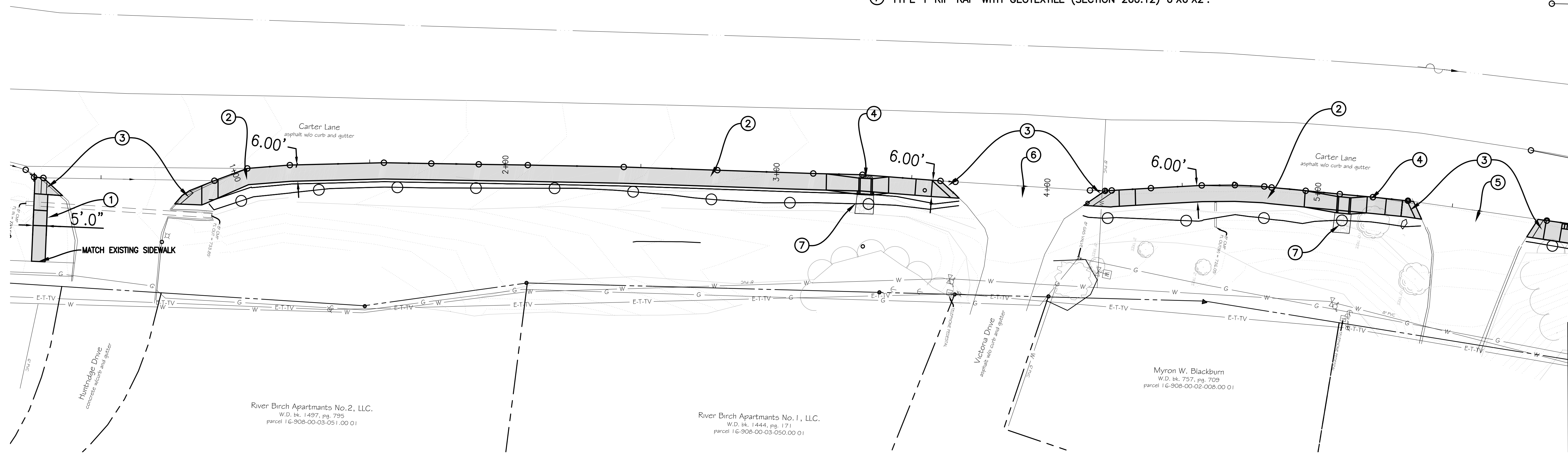
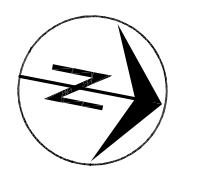
⑤ REMOVE PAVEMENT AND RECONSTRUCT RESIDENTIAL DRIVEWAY PER WARPING PLAN.

② CONSTRUCT 4" THICK CONCRETE SIDEWALK WITH INTEGRAL CURB PER DETAIL 2, SHEET 8.

④ CONSTRUCT STORMWATER INLET PER DETAIL 2, SHEET 9.

⑥ RECONSTRUCT STREET ENTRANCE FOR 2% CROSS SLOPE ALONG STREET CROSSING. SEE WARPING PLAN

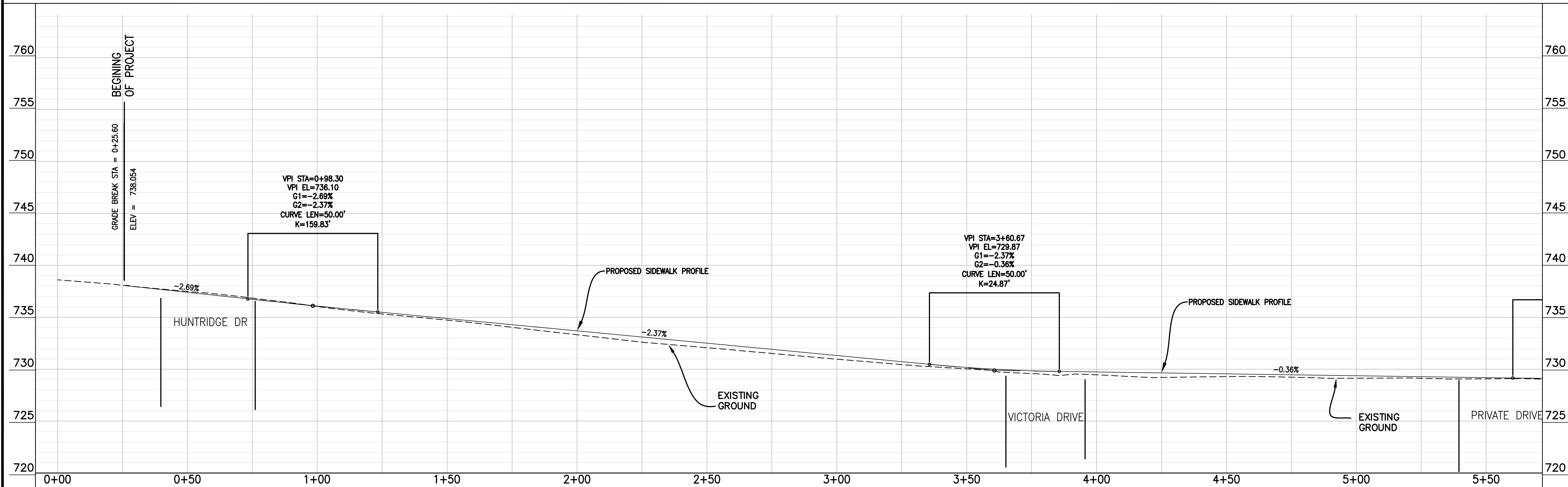
⑦ TYPE 1 RIP RAP WITH GEOTEXTILE (SECTION 260.12) 6'X6'X2'.



Revision	By	Date	No.

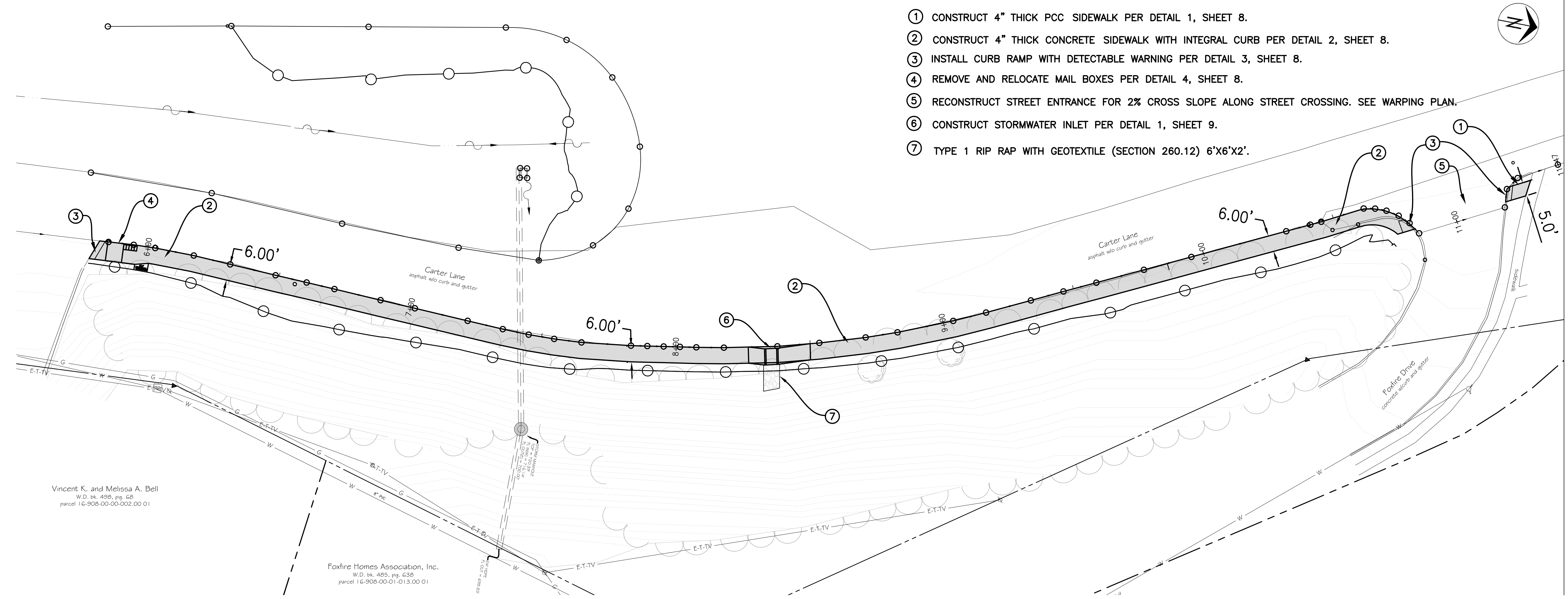
CARTER LANE SIDEWALK
Plan & Profile - Sta. 3+43 to Sta. 5+25

City of Columbia, Missouri
Department of Public Works



David Allen Nichols Registered Professional Engineer E-24212
File No. 18-10-12
Scale: 1" = 20'
Date: 7/22/2016
Des. A.N.H.
Dwn. C.N.S.
Chk. A.A.A.

G:\cadd\proj\sidewalk\180112_carter_lane\design\plan_profiles_11_28_17_revised\plan_profiles.dwg



- ① CONSTRUCT 4" THICK PCC SIDEWALK PER DETAIL 1, SHEET 8.
- ② CONSTRUCT 4" THICK CONCRETE SIDEWALK WITH INTEGRAL CURB PER DETAIL 2, SHEET 8.
- ③ INSTALL CURB RAMP WITH DETECTABLE WARNING PER DETAIL 3, SHEET 8.
- ④ REMOVE AND RELOCATE MAIL BOXES PER DETAIL 4, SHEET 8.
- ⑤ RECONSTRUCT STREET ENTRANCE FOR 2% CROSS SLOPE ALONG STREET CROSSING. SEE WARPING PLAN.
- ⑥ CONSTRUCT STORMWATER INLET PER DETAIL 1, SHEET 9.
- ⑦ TYPE 1 RIP RAP WITH GEOTEXTILE (SECTION 260.12) 6'X6'X2'.

Vincent K. and Melissa A. Bell
 W.D. bk. 488, pg. 65
 parcel 16-908-00-00-002.00 01

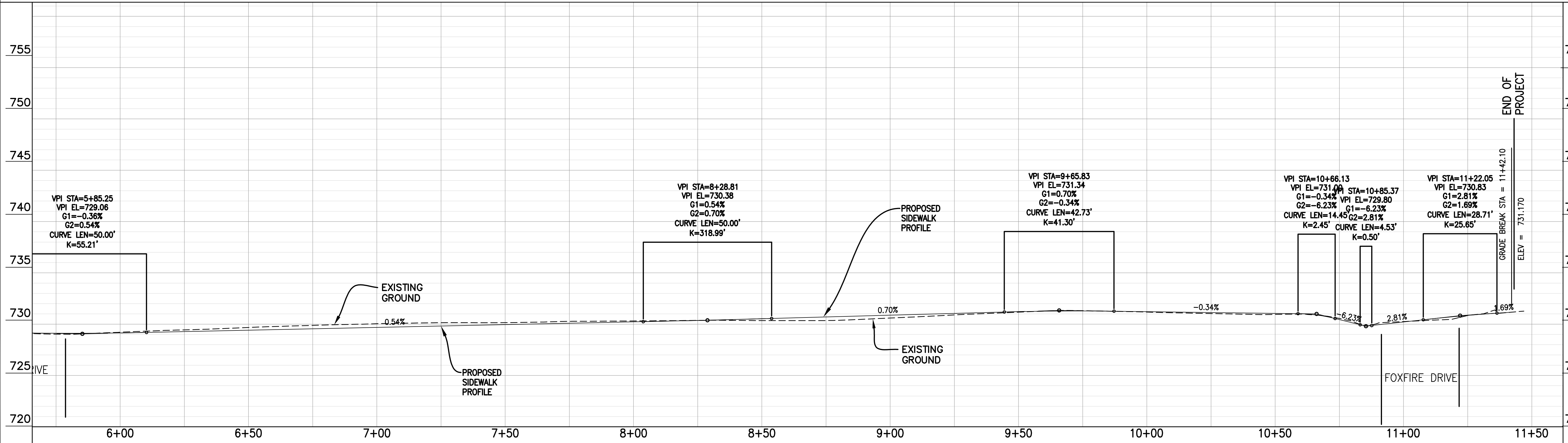
Foxfire Homes Association, Inc.
 W.D. bk. 485, pg. 638
 parcel 16-908-00-01-013.00 01

Revision	By	Date	No.

CARTER LANE SIDEWALK

Plan & Profile - Sta. 5+25 to Sta. 11+30

City of Columbia, Missouri
 Department of Public Works

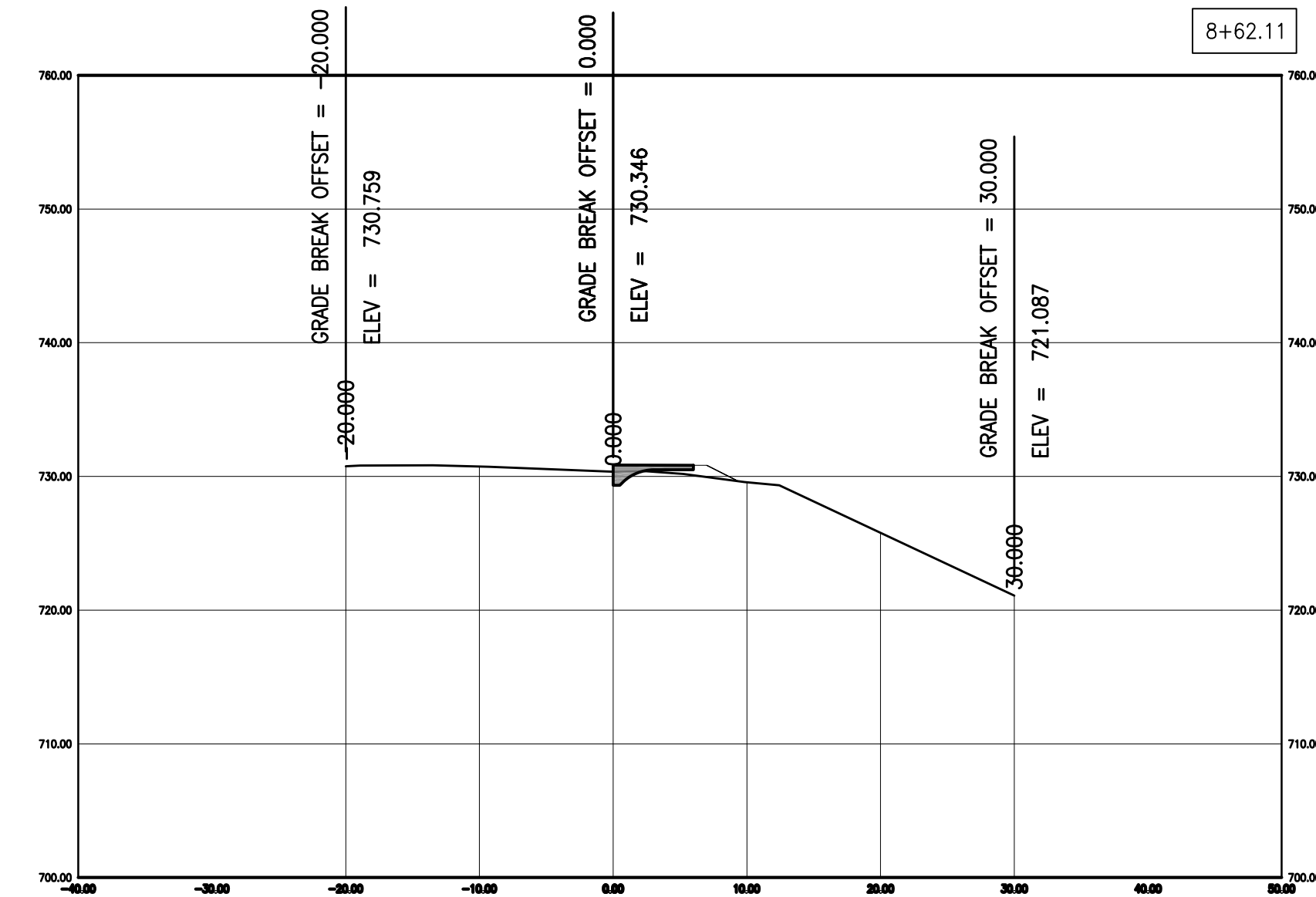
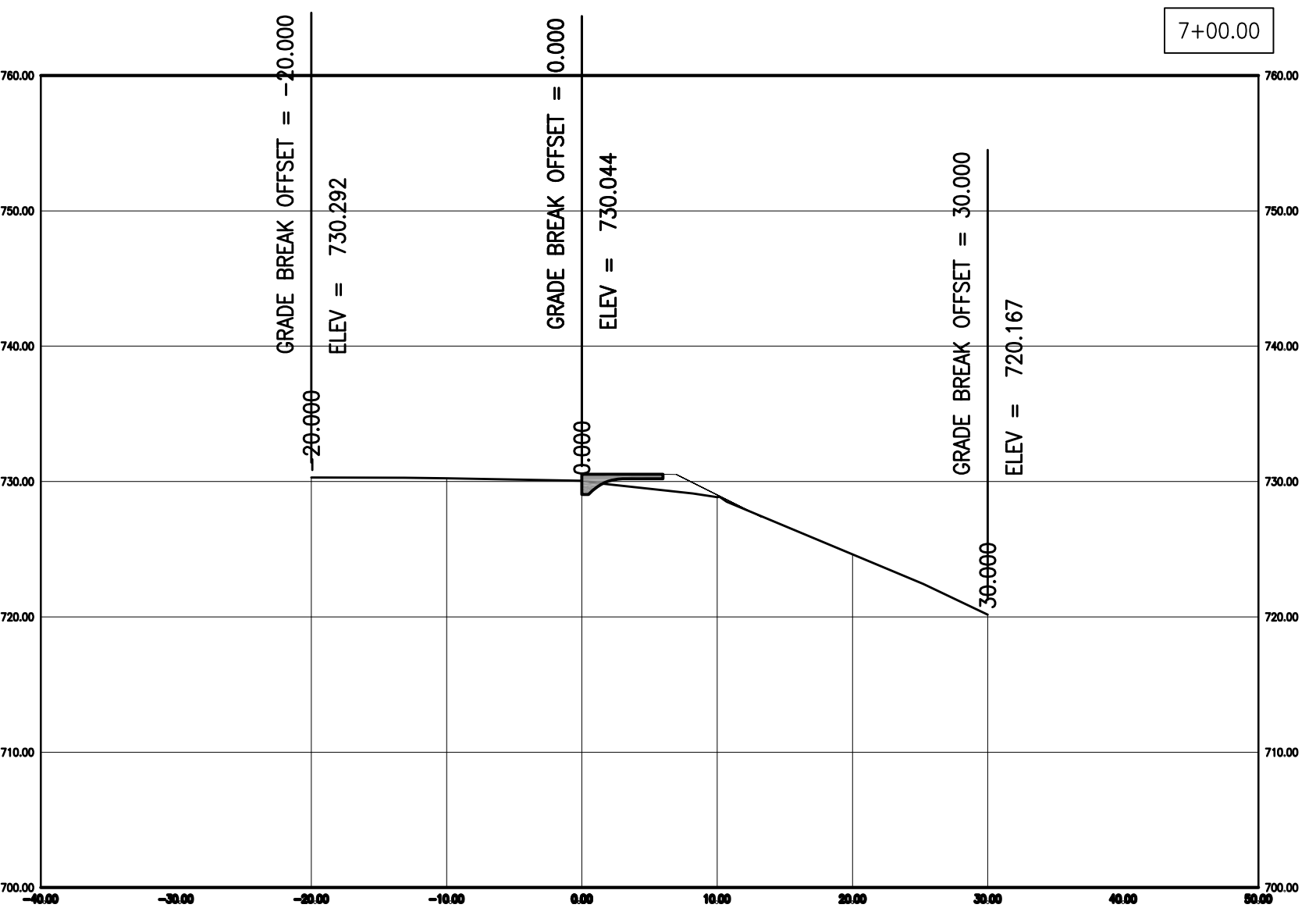
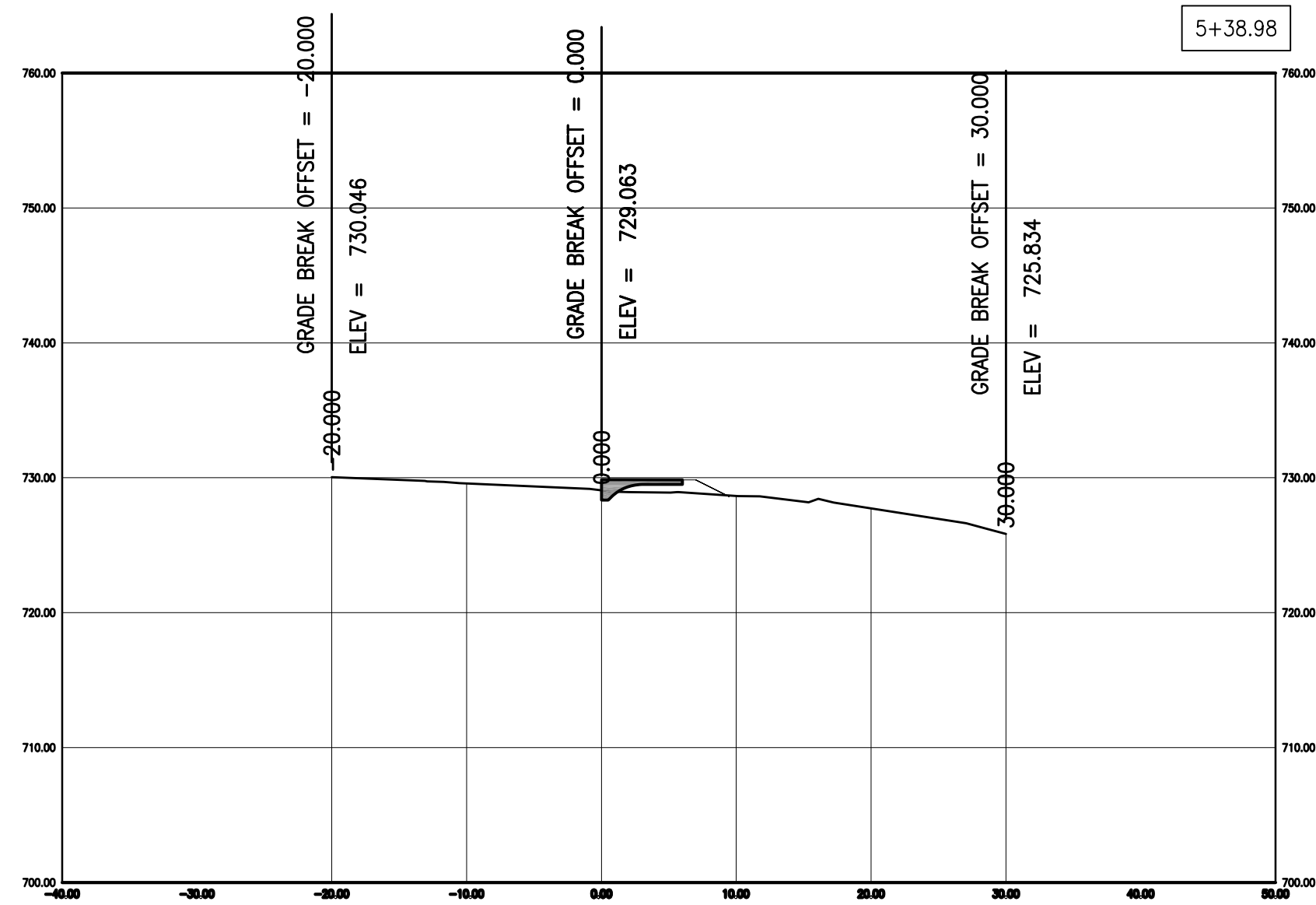
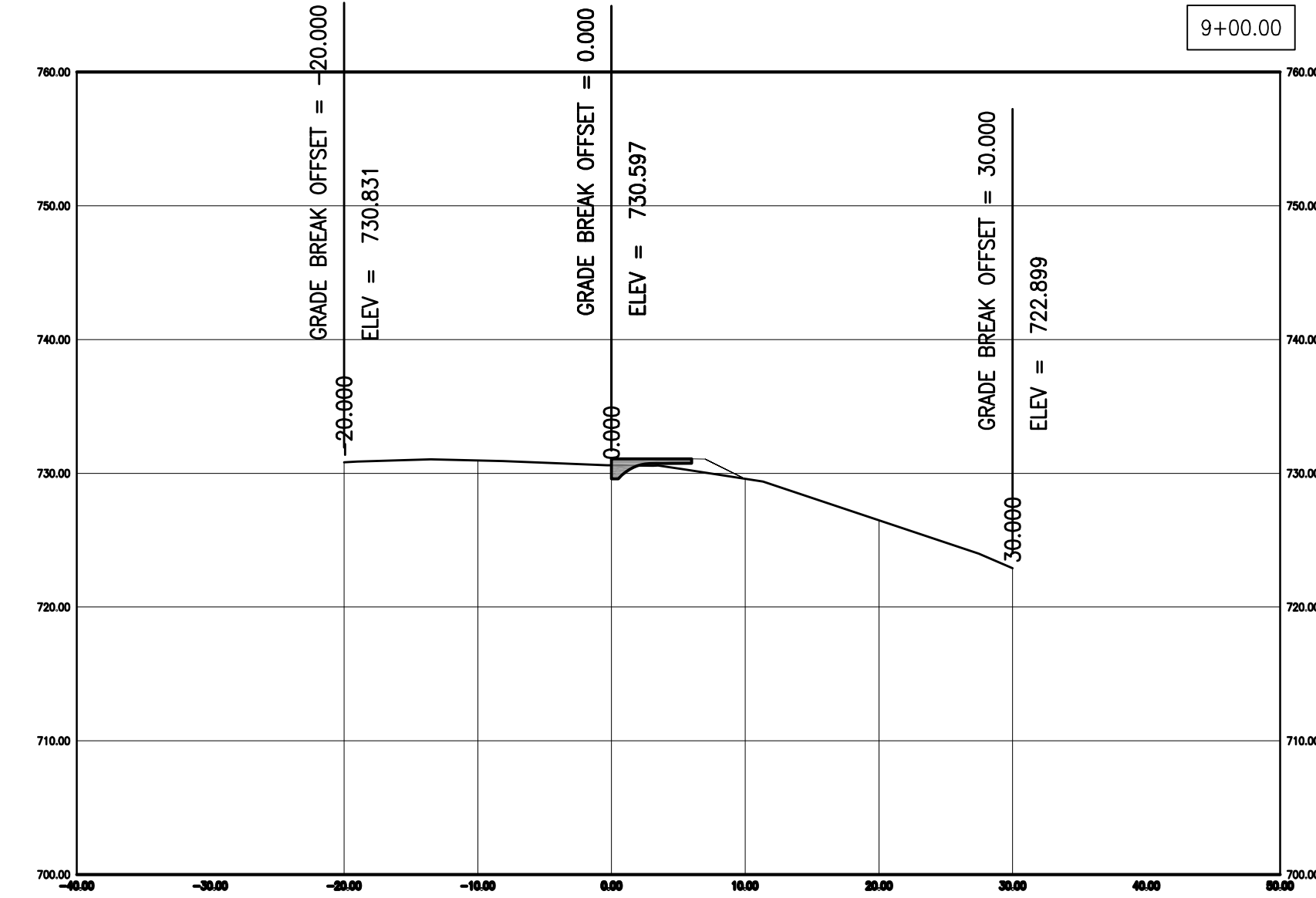
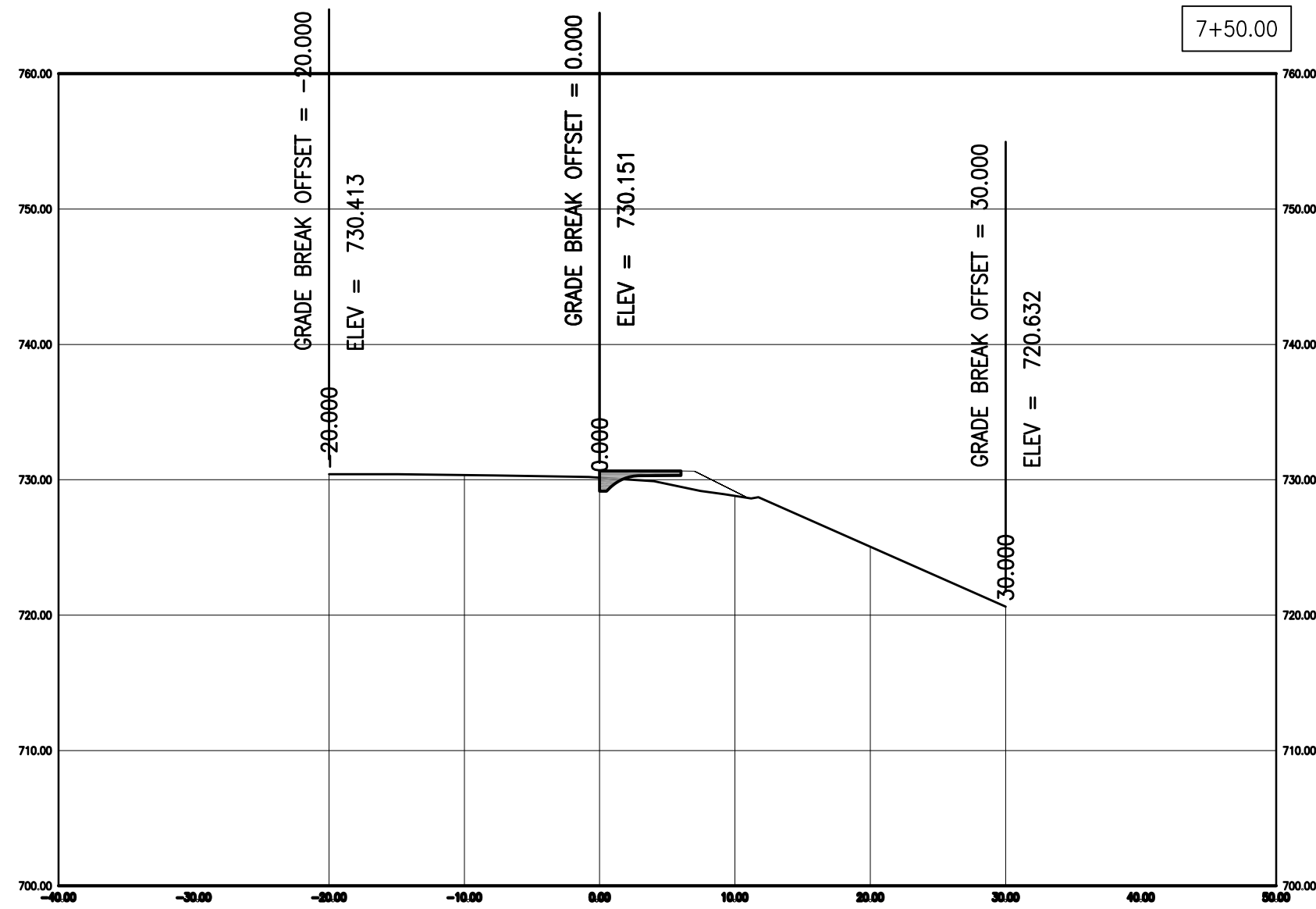
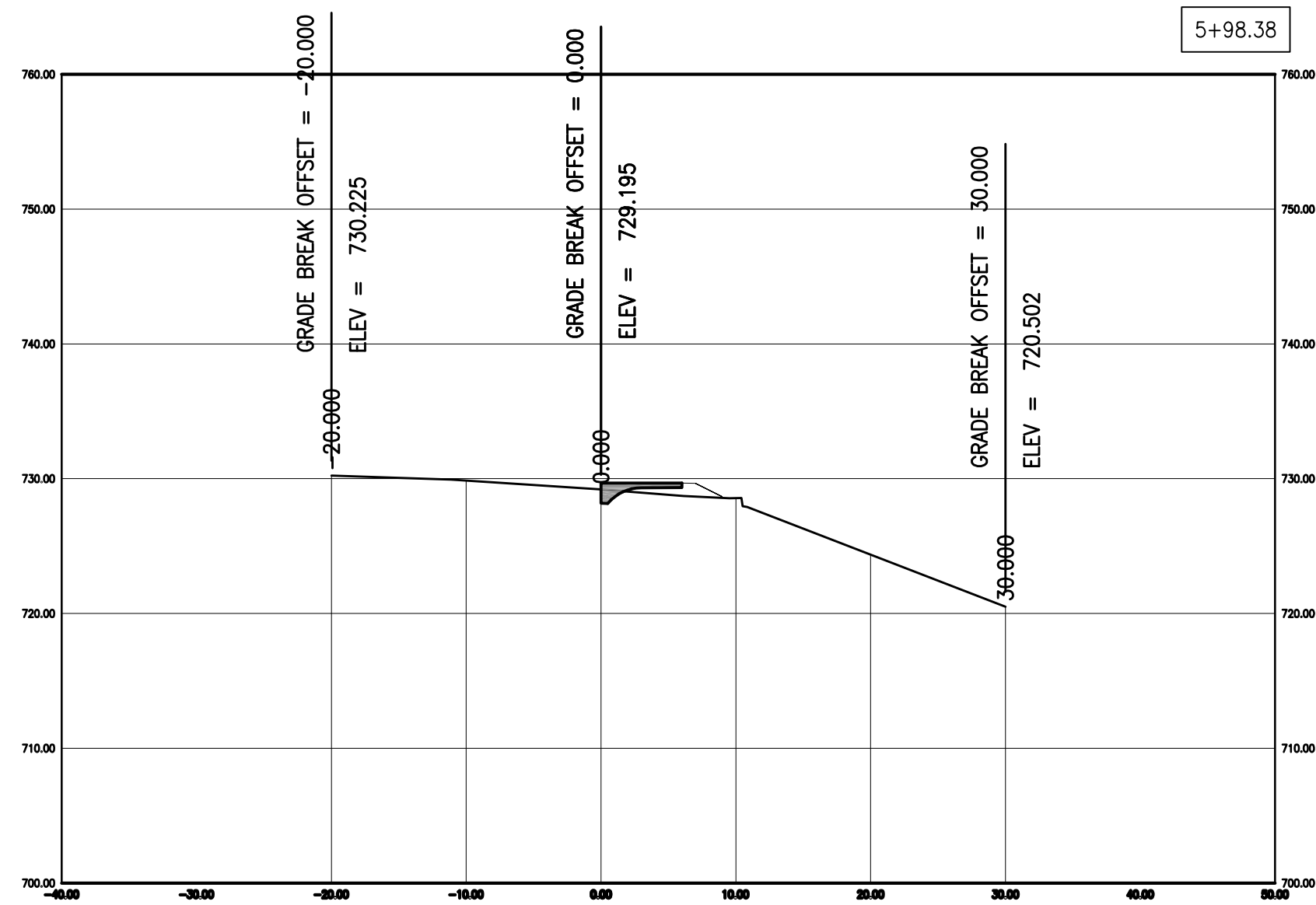
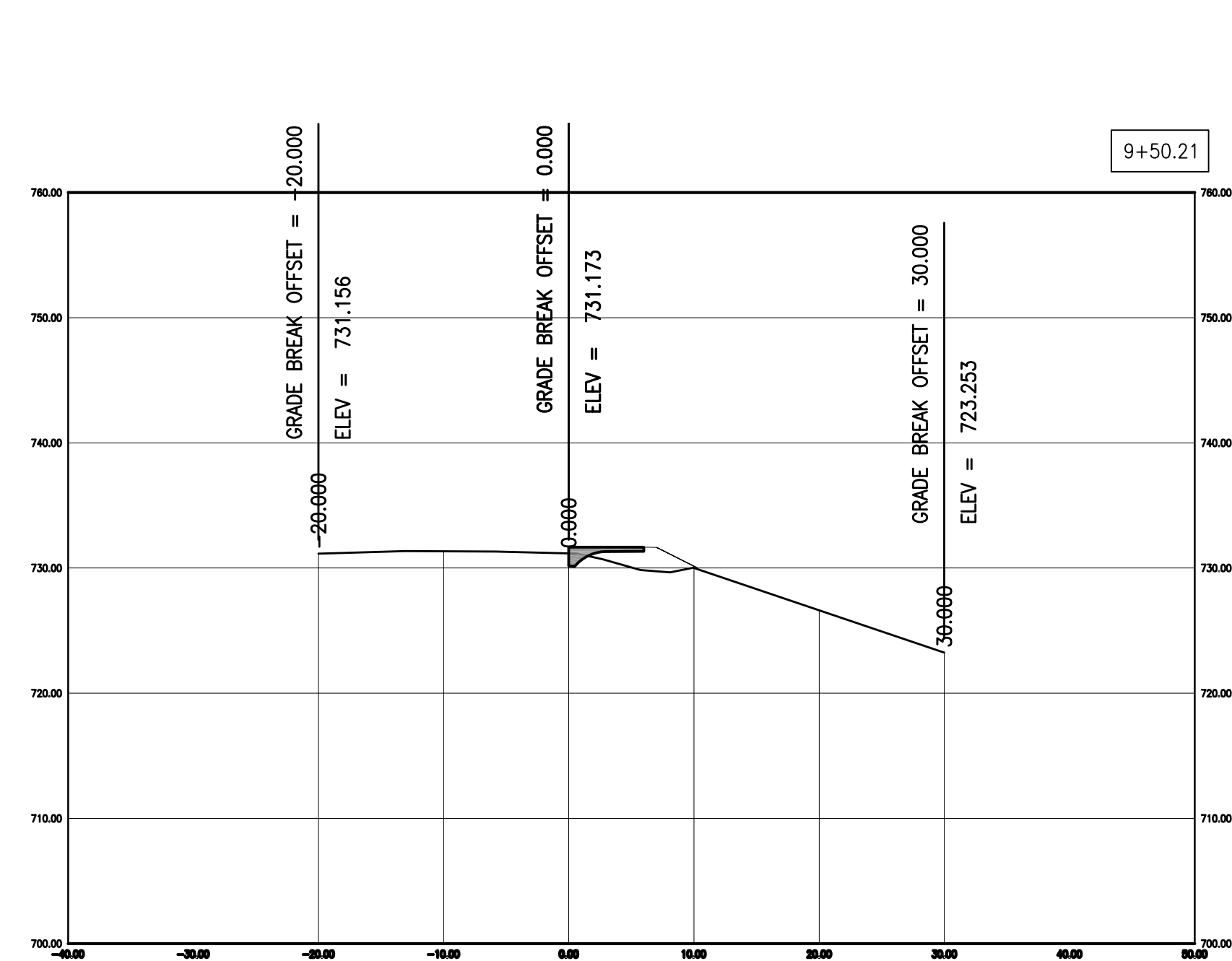
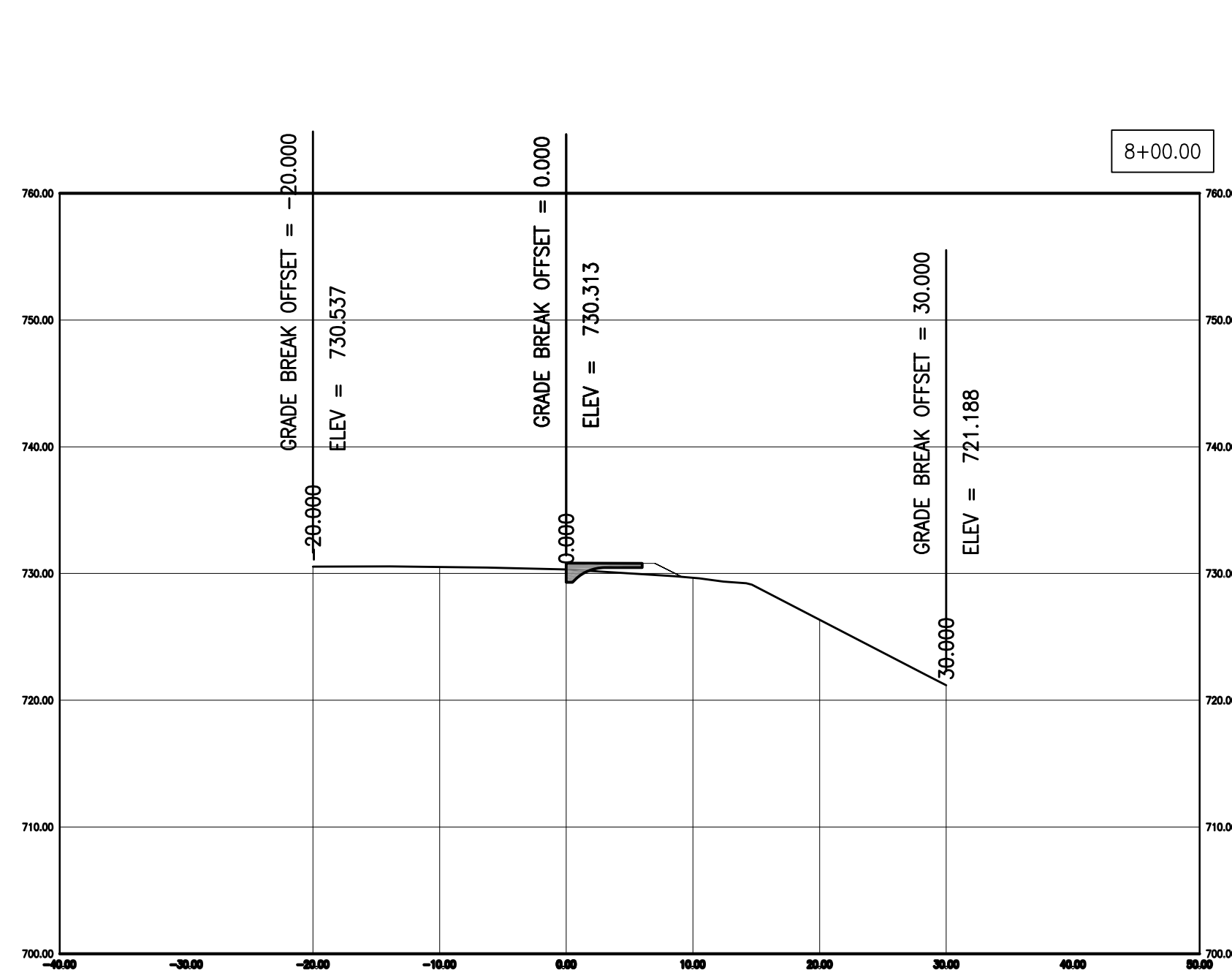
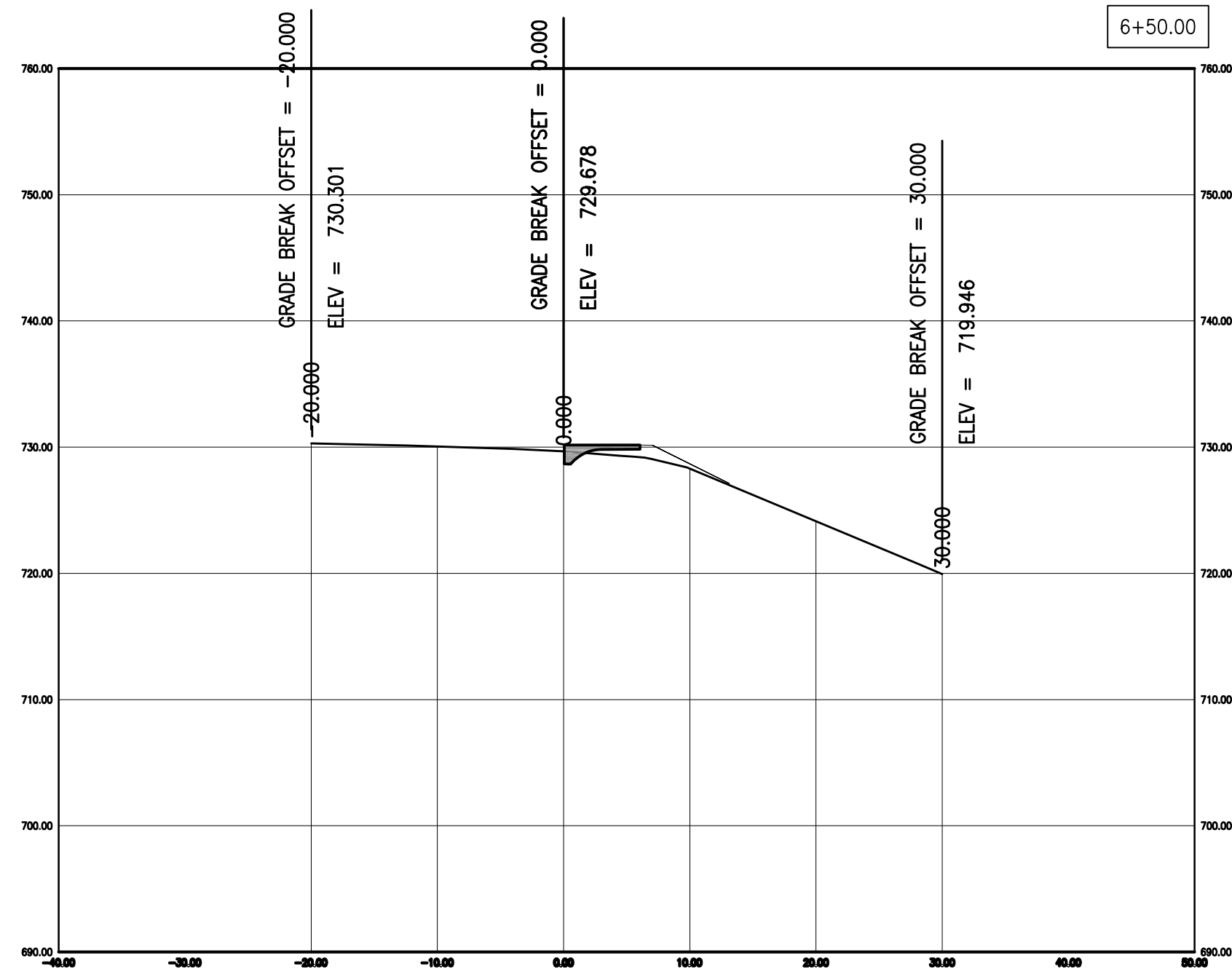


David Allen Nichols
 Registered Professional Engineer
 E-24212

File No. 18-10-12
 Scale: 1" = 20'
 Date: 7/22/2016
 Des. A.N.H.
 Dwn. C.N.S.
 Chk. A.A.A.

o:\cadd\proj\sidewalk\80112_carter_lane\design\plan\plan_11_28_17_revised.mxd

2011 Orthophoto Source: Boone County Assessor



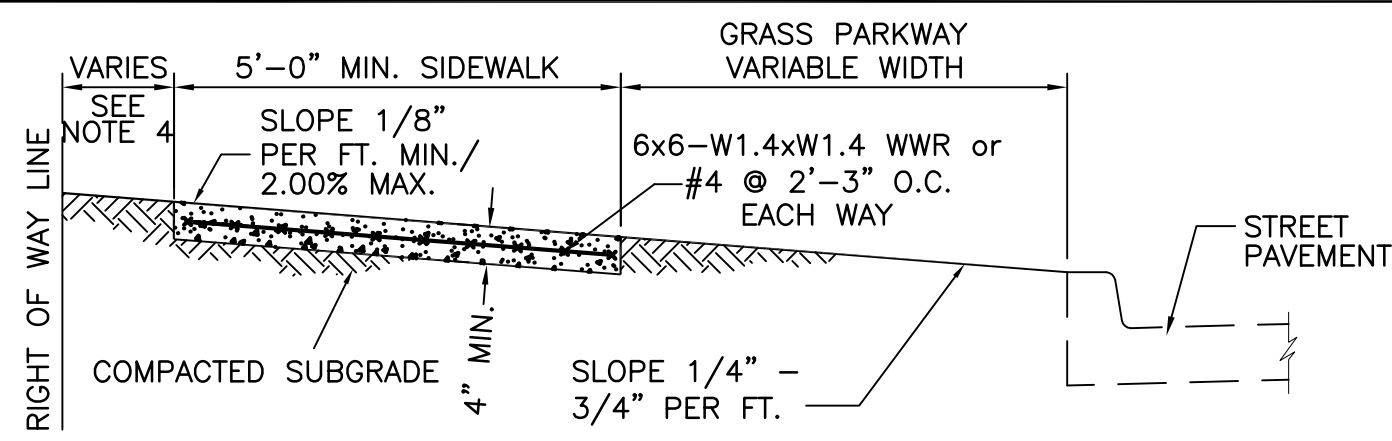
No.	Date	By	Revision

CARTER LANE SIDEWALK
ALIGNMENT A CROSS SECTION VIEWS

City of Columbia, Missouri
Department of Public Works

David Allen Nichols
Registered Professional Engineer
E-24212

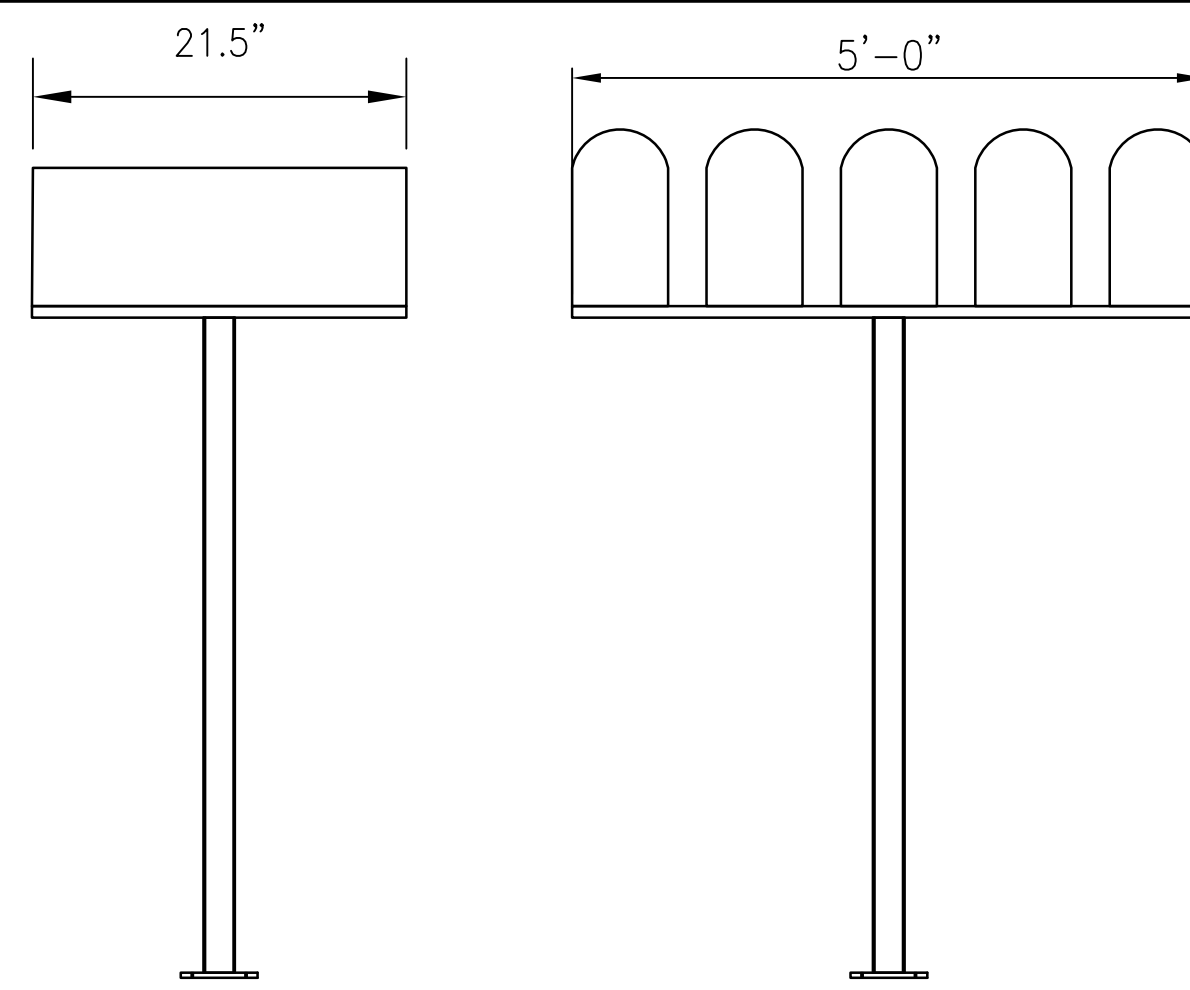
File No. 18-01-12
Scale: 1" = 10'
Date: 1/11/2018
Des. A.N.H.
Dwn. C.N.S.
Chk. A.A.A.



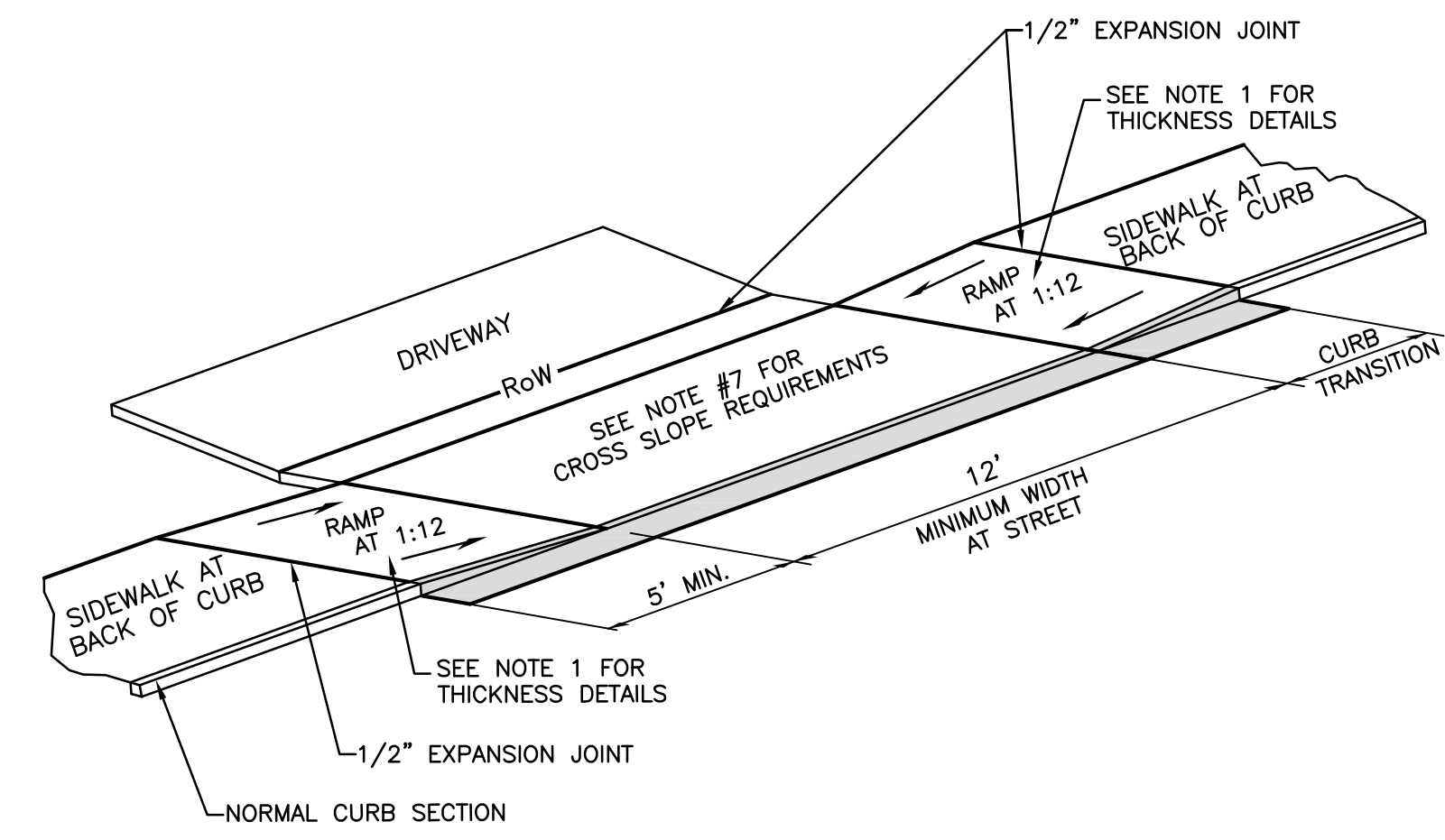
1
8 SIDEWALK WITH GRASS PARKWAY

NOTE:

1. SIDEWALK SHALL BE 4" THICK MoDOT PAVEMENT CONCRETE.
2. INSTALL 1/2" EXPANSION JOINTS AT INTERSECTIONS, RAMPS, STRUCTURES, DRIVEWAY APPROACHES, OR EVERY 100'.
3. INSTALL TRANSVERSE SAW JOINTS AT SPACING EQUAL TO SIDEWALK WIDTH.
4. STANDARD SIDEWALK PLACEMENT IS 12" FROM RIGHT OF WAY LINE.
5. NO STEEL TO BE PLACED THROUGH EXPANSION JOINT.
6. SIDEWALK CROSS SLOPE SHALL NOT EXCEED 2.00%.
7. DAMAGED SIDEWALK MUST BE PINNED TO EXISTING SIDEWALK.
8. WWR OR REBAR SHALL BE ACCURATELY PLACED AND FIRMLY HELD IN PLACE DURING CONCRETE PLACEMENT BY APPROVED METHODS, SEE SECTION 238.9.

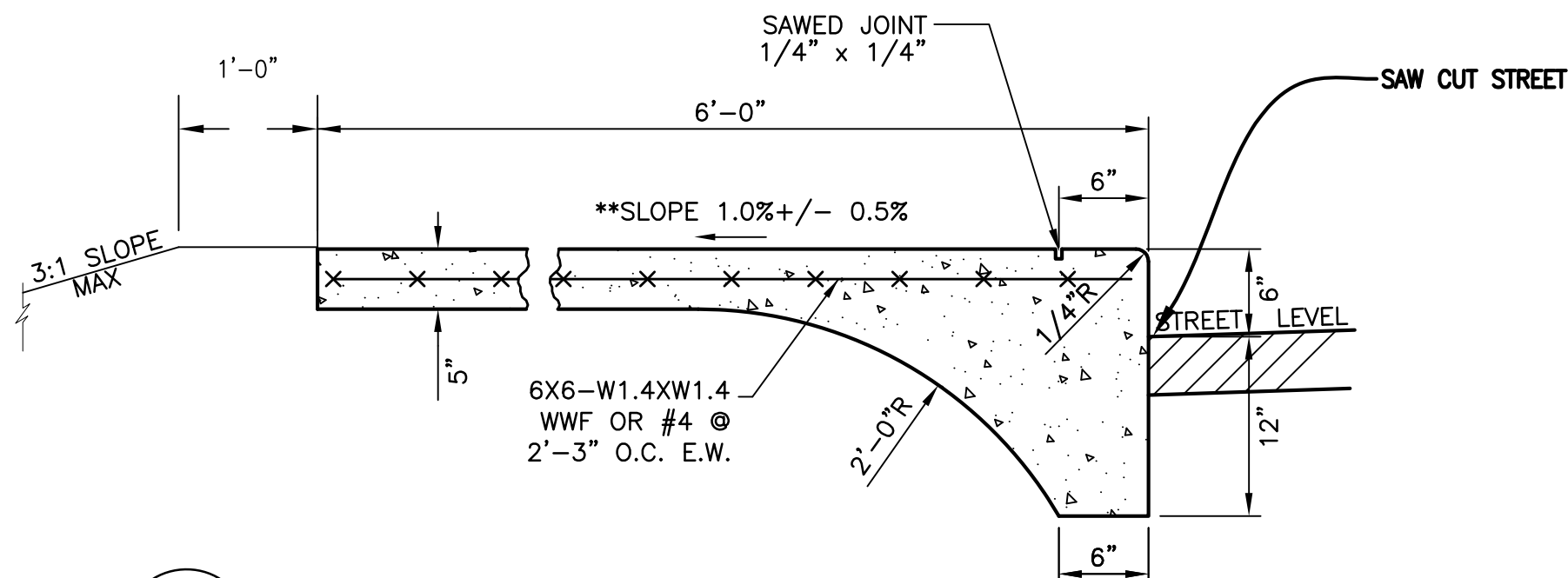


MAIL BOX DETAIL



NOTE:

1. RAMP SHALL BE 6" THICK MoDOT PAVEMENT CONCRETE FOR RESIDENTIAL, 7" THICK MoDOT PAVEMENT CONCRETE FOR COMMERCIAL.
2. EXPANSION JOINT SHALL BE 1/2" PREFORMED CORK OR BITUMINOUS EXPANSION JOINT MATERIAL.
3. DRIVEWAY CROSS SLOPE SHALL NOT EXCEED 2.00%.
4. ALL SLOPES ARE MEASURED FROM THE HORIZONTAL.
5. REPLACE STANDARD CURB SECTION DRIVEWAY CURB SECTION - DETAIL 400.02 OR 400.03
6. RAMP LENGTH IS DEPENDENT UPON 1:12 MAX. SLOPE AT 5' MINIMUM TRANSITION AREA. USE FLATTER WHEN POSSIBLE.
7. A PEDESTRIAN ACCESSIBLE ROUTE SHALL BE PROVIDED THAT IS 4'-0" WIDE MINIMUM WITH A MINIMUM CROSS SLOPE OF 1/8" PER FOOT AND MAXIMUM CROSS SLOPE OF 2.00%.
8. DRIVEWAY MAY BE REINFORCED AT OWNERS OPTION. ON CITY BID PROJECTS DO NOT REINFORCE.



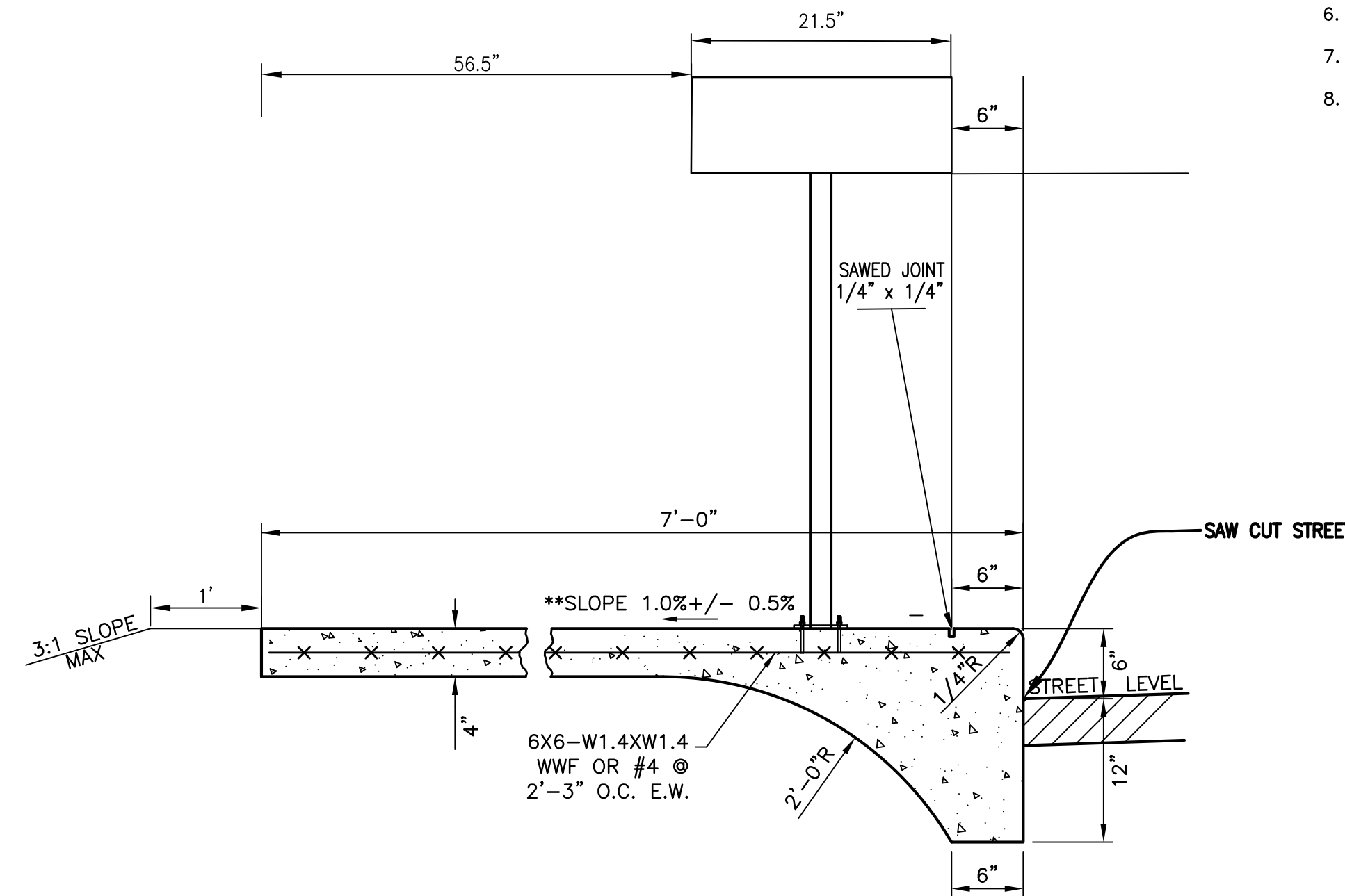
2
8 6' WIDE SIDEWALK W/INTEGRAL CURB

STA 0+00.53 TO 10+02.10

**SLOPE AWAY FROM STREET
NOT TO SCALE

NOTE:

1. SIDEWALK SHALL BE 5" THICK MoDOT PAVEMENT CONCRETE.
2. INSTALL 1/2" EXPANSION JOINTS AT INTERSECTIONS, RAMPS, STRUCTURES, DRIVEWAY APPROACHES, OR EVERY 100'.
3. INSTALL TRANSVERSE SAW JOINTS AT SPACING EQUAL TO SIDEWALK WIDTH.
4. NO STEEL TO BE PLACED THROUGH EXPANSION JOINT.
5. SIDEWALK CROSS SLOPE SHALL NOT EXCEED 2.00%.
6. WWR OR REBAR SHALL BE ACCURATELY PLACED AND FIRMLY HELD IN PLACE DURING CONCRETE PLACEMENT BY APPROVED METHODS, SEE SECTION 238.9.
7. CURB FACE HEIGHT SHALL BE 8"-4" ALLOWING FOR FLUXUATION IN THE STREET.



4
8 7' WIDE SIDEWALK W/INTEGRAL CURB & MAIL BOX

STA 5+95.54 TO 6+00.54

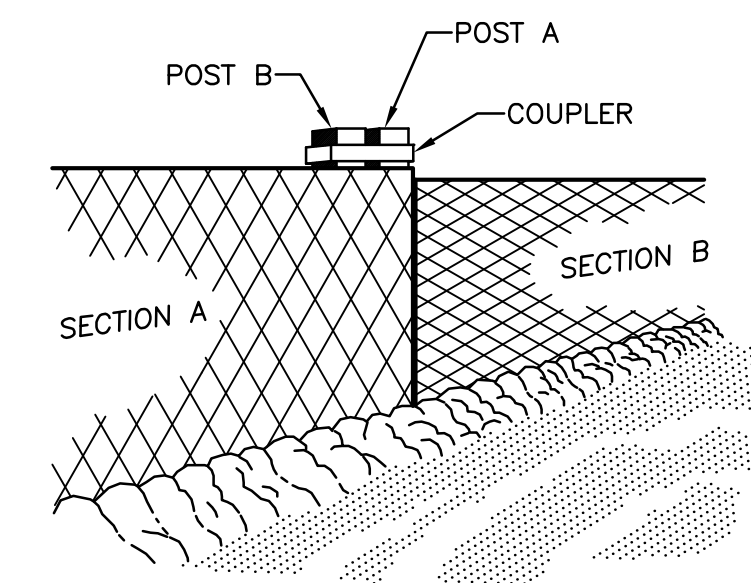
**SLOPE AWAY FROM STREET
NOT TO SCALE

NOTE:

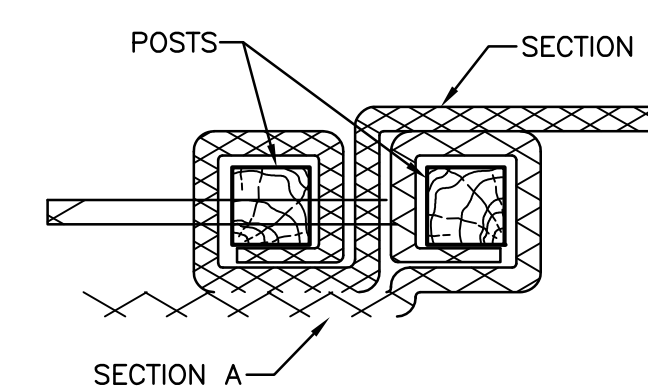
1. SIDEWALK SHALL BE 5" THICK MoDOT PAVEMENT CONCRETE.
2. INSTALL 1/2" EXPANSION JOINTS AT INTERSECTIONS, RAMPS, STRUCTURES, DRIVEWAY APPROACHES, OR EVERY 100'.
3. INSTALL TRANSVERSE SAW JOINTS AT SPACING EQUAL TO SIDEWALK WIDTH.
4. NO STEEL TO BE PLACED THROUGH EXPANSION JOINT.
5. SIDEWALK CROSS SLOPE SHALL NOT EXCEED 2.00%.
6. WWR OR REBAR SHALL BE ACCURATELY PLACED AND FIRMLY HELD IN PLACE DURING CONCRETE PLACEMENT BY APPROVED METHODS, SEE SECTION 238.9.
7. CURB FACE HEIGHT SHALL BE 8"-4" ALLOWING FOR FLUXUATION IN THE STREET.

5
8 SIDEWALK DRIVEWAY DETAIL
Sidewalk at Back of Curb

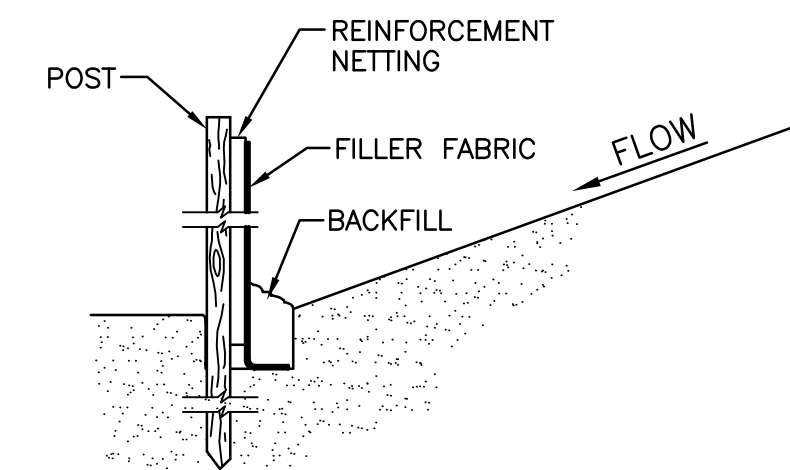
NOT TO SCALE



JOINING SECTIONS



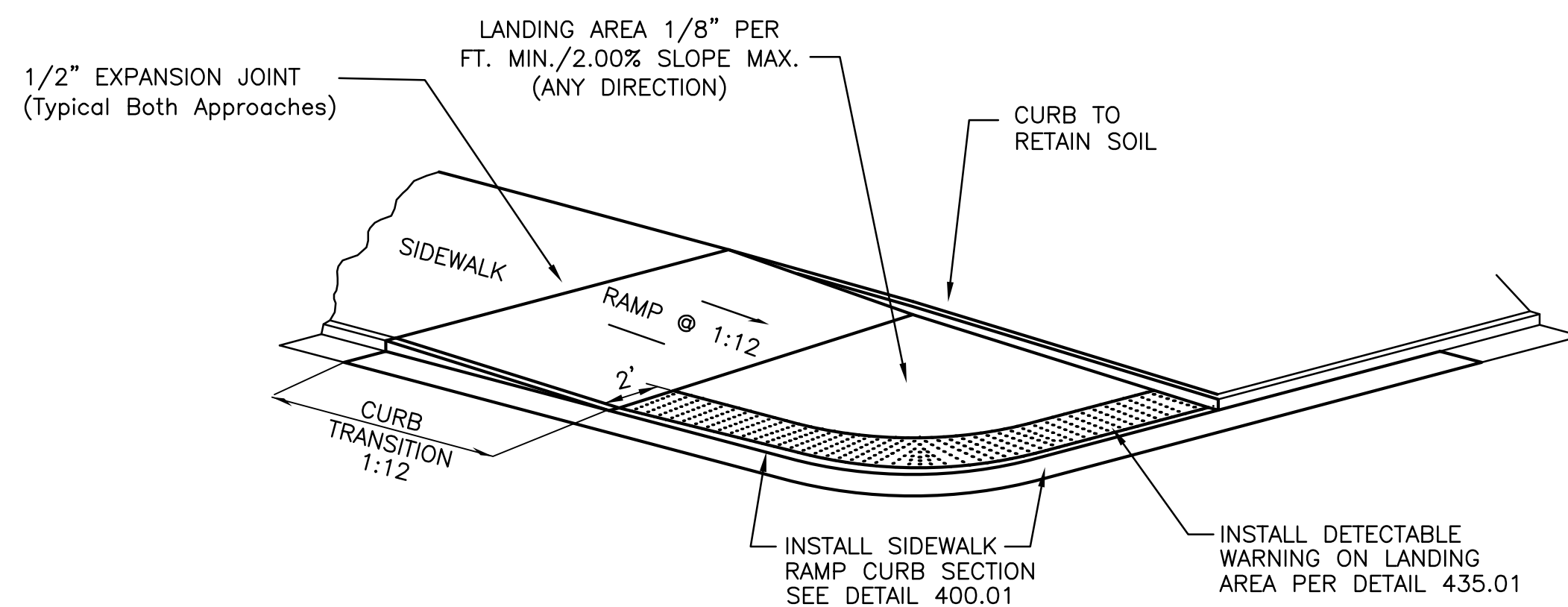
TOP VIEW



TOE-IN METHOD

NOTES:

1. EXCAVATE A 6" x 6" TRENCH ALONG THE TOE OF SLOPE.
2. UNROLL ONE SECTION AT A TIME AND POSITION POSTS AGAINST THE DOWNSTREAM WALL OF THE TRENCH. REINFORCEMENT NETTING MUST BE ON DOWNSTREAM SIDE OF FLOW DIRECTION.
3. DRIVE POST INTO THE GROUND UNTIL THE REINFORCEMENT NETTING IS APPROXIMATELY 2' FROM THE TRENCH BOTTOM.
4. LAY THE TOE-IN FLAP OF THE FABRIC IN THE BOTTOM OF THE TRENCH, AND TAMP THE SOIL.
5. DOWNSTREAM END OF SILT FENCE SHALL BE TURNED INTO BACKSLOPE TO FORM ENCLOSURE.



NOTE:

1. RAMP AND LANDING SHALL BE 6" THICK REINFORCED MoDOT PAVEMENT CONCRETE W/#4 BARS @ 12" O.C.
2. EXPANSION JOINT SHALL BE 1/2" PREFORMED CORK OR BITUMINOUS EXPANSION JOINT MATERIAL.
3. MAXIMUM RAMP CROSS SLOPE IS 2.00%.
4. ALL SLOPES ARE MEASURED FROM THE HORIZONTAL.
5. REPLACE STANDARD CURB SECTION WITH SIDEWALK RAMP CURB SECTION - DETAIL 400.01
6. RAMP LENGTH IS DEPENDENT ON 1:12 MAX. SLOPE. USE FLATTER WHEN POSSIBLE.

3
8 CURB RAMP DETAIL

SIDEWALK SECTIONS
NOT TO SCALE

6
8 SILT FENCE INSTALLATION

Revision	
By	
Date	
No.	

CARTER LANE
Details Sheet

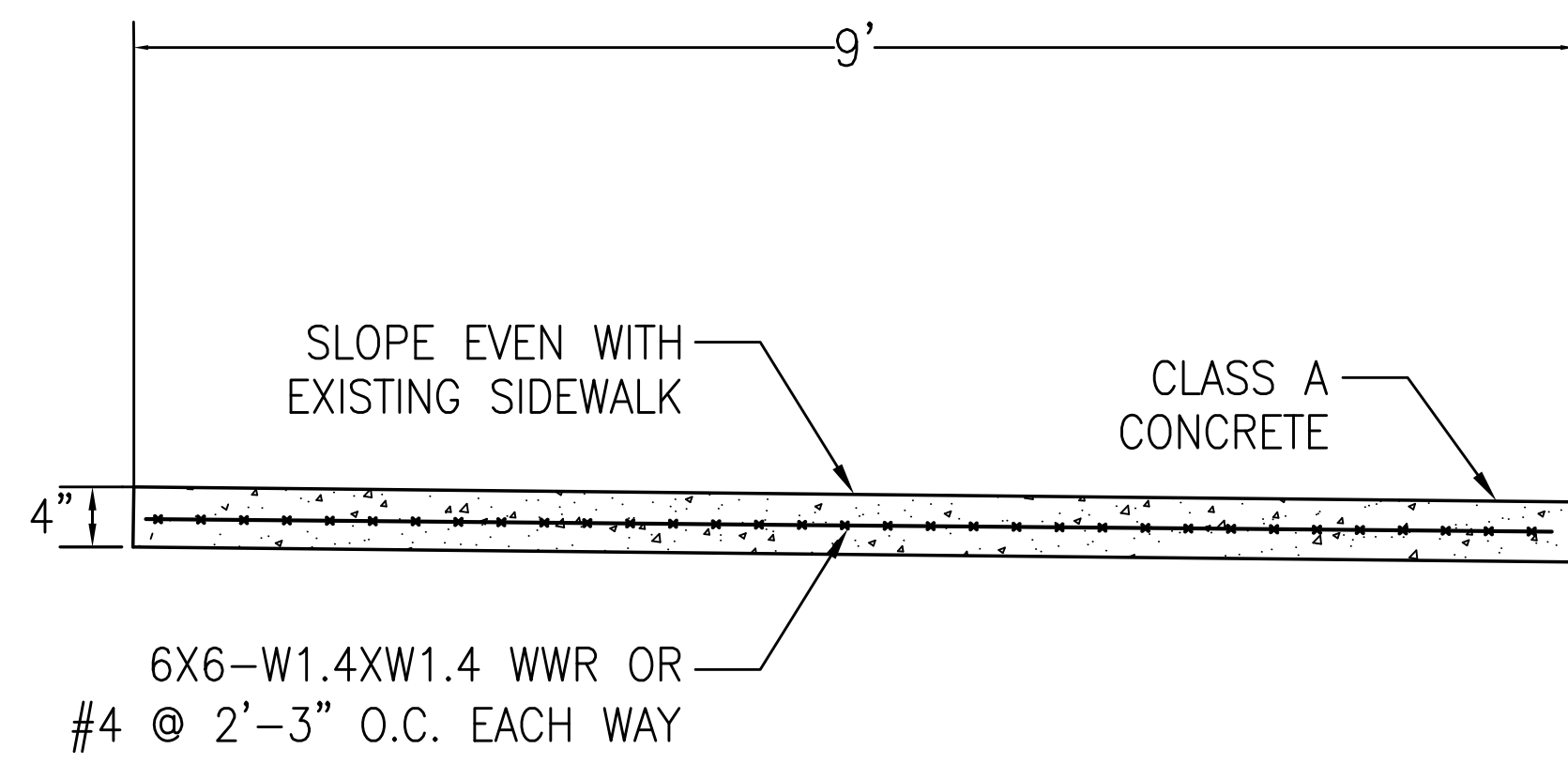
City of Columbia, Missouri

Department of Public Works

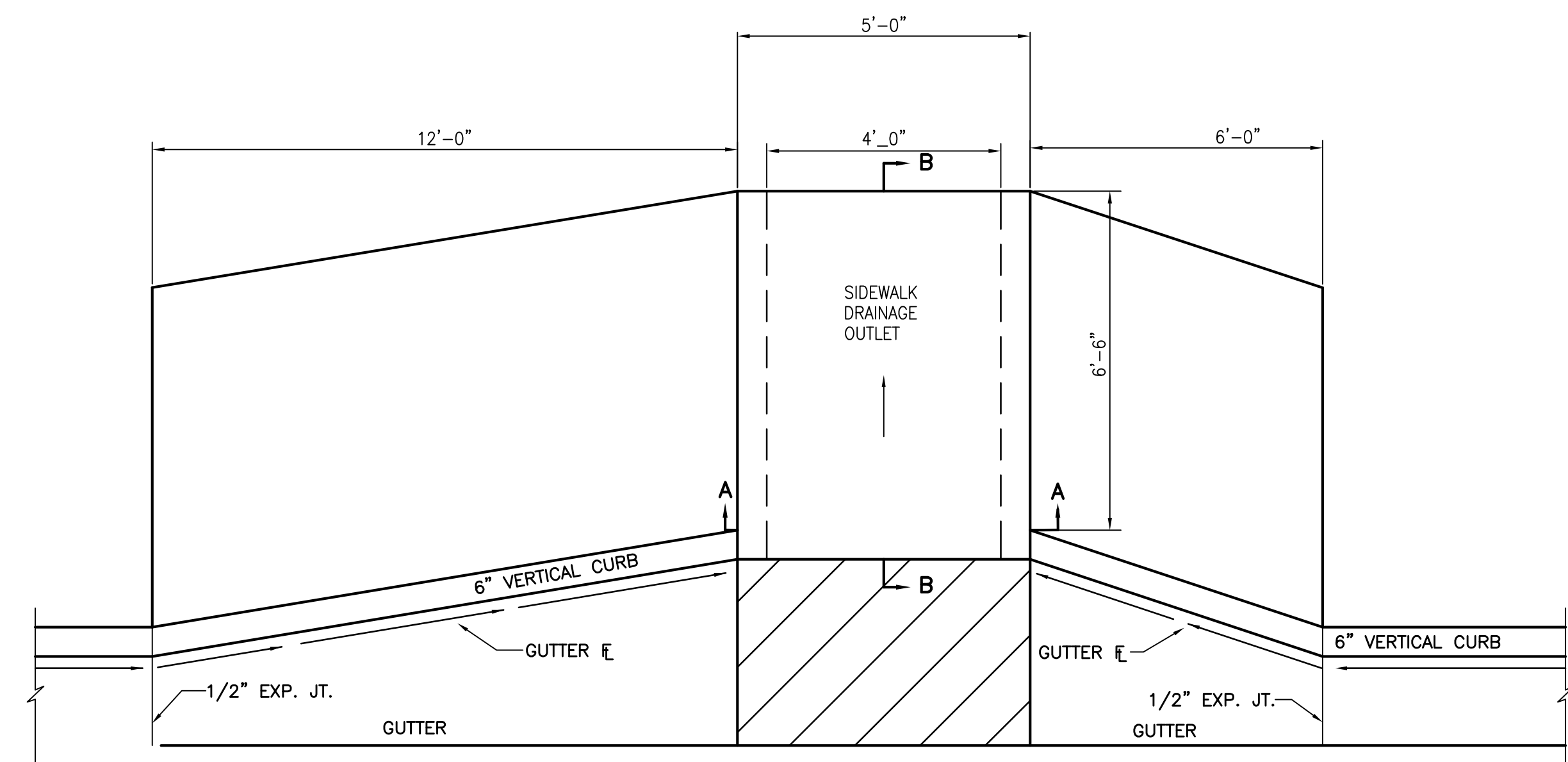
David Allen Nichols
Registered Professional Engineer
E-24212

File No.	
Scale:	1" = 20'
Date:	XX/XX/2018
Des.	X.X.X.
Dwn.	C.N.S.
Chk.	X.X.X.

Sheet
8 of 9



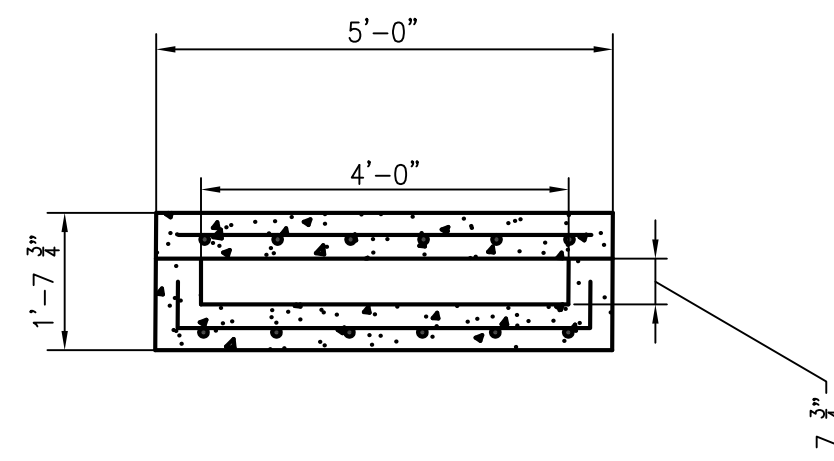
$\frac{7}{9}$ BUS STOP SHELTER PAD
NOT TO SCALE



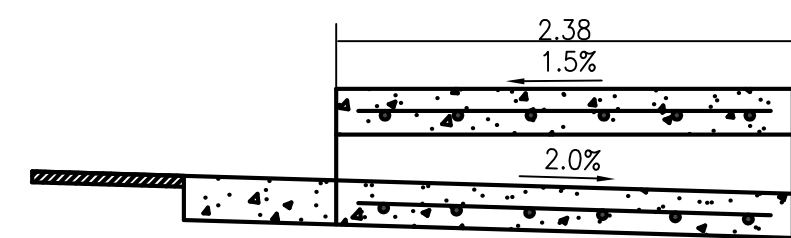
$\frac{8}{9}$ STORMWATER SIDEWALK DETAIL

NOTES:

- REFER TO STANDARD DETAIL 505.01A IN CITY OF COLUMBIA STREET, STORM, AND SANITARY SPECIFICATIONS, FOR GUTTER SPECIFICATIONS.



SECTION A-A



SECTION B-B

Revision	By	Date	No.

CARTER LANE
Details Sheet

City of Columbia, Missouri

Department of Public Works

David Allen Nichols
Registered Professional
Engineer
E-24212

File No.	.
Scale:	NONE
Date:	XX/XX/2018
Des.	A.N.H.
Dwn.	C.N.S.
Chk.	A.A.A.

Sheet
9 of 9