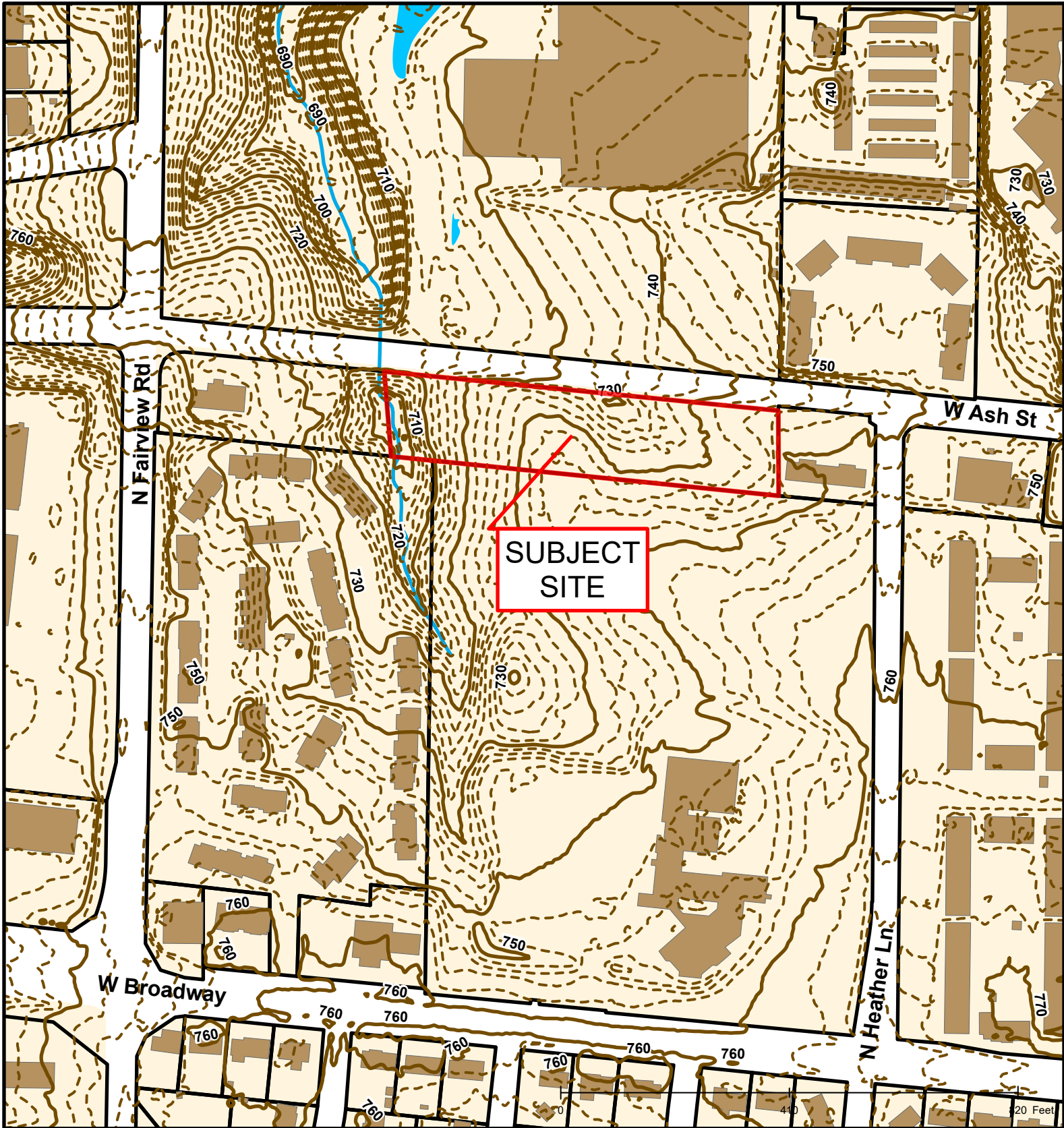


#18-175: MBS Realty Partners, LP PD Plan Amendment



Roads	Columbia City Limit
City Zoning	CityViewparcels
Parcels	





#18-175: MBS Realty Partners, LP PD Plan Amendment



Roads	--- 2 Foot Contour Lines	■ Bodies of Water
■ Building Footprint	□ Parcels	■ City Zoning
— 10 Foot Contour Lines	— Streams	

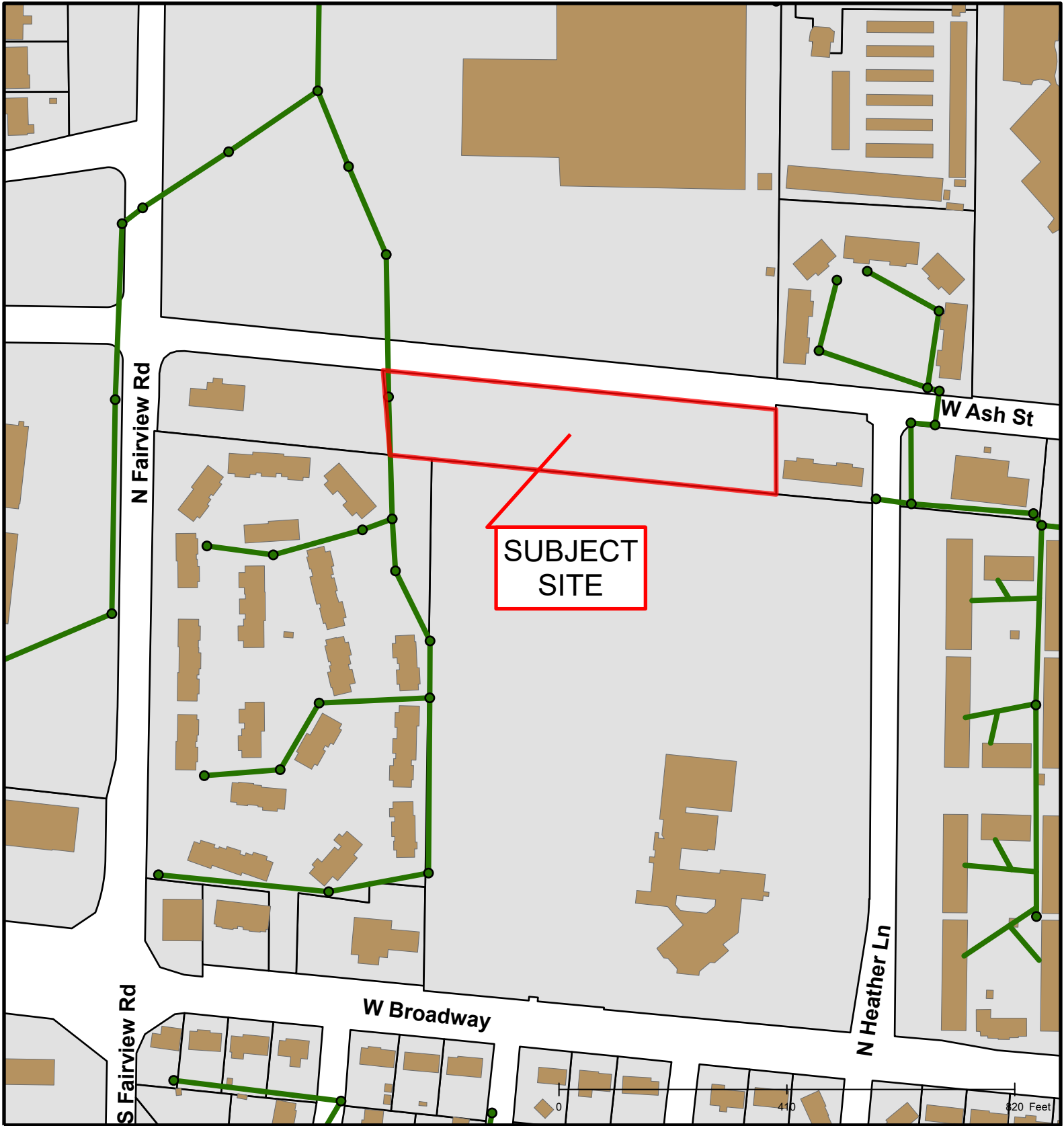


Created by The City of Columbia - Community Development Department

Parcel Data Source: Boone County Assessor

2015 Imagery: Boone County Assessor's Office

Hillshade Data: Boone County GIS Office



#18-175: MBS Realty Partners, LP PD Plan Amendment

