

No.	Date	By	Revision

FORUM BOULEVARD

Plan & Profile - Sta. 0+00 to Sta. 10+50

City of Columbia, Missouri
 Department of Public Works

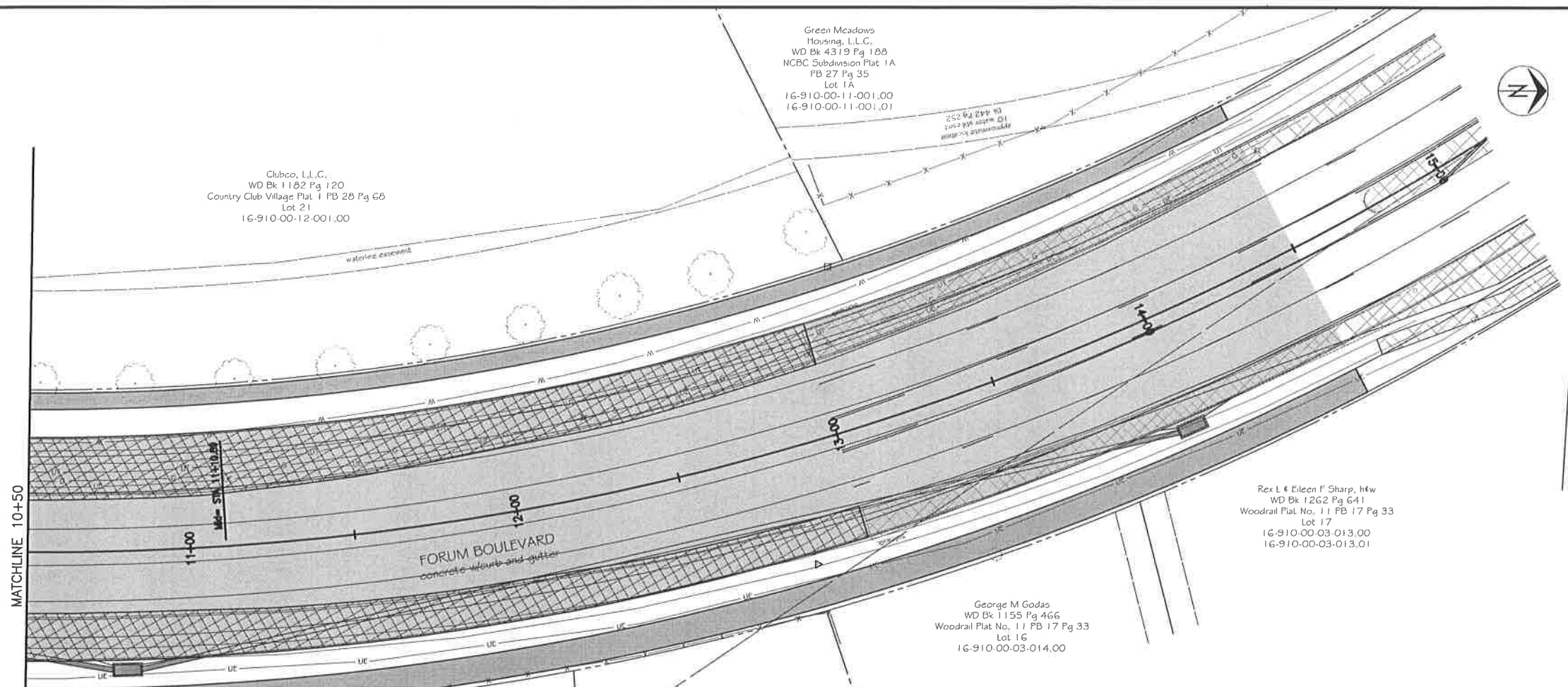
David Allen Nichols
 Registered Professional Engineer
 E-24212

File No. 32-04-15
 Scale: 1" = 20'
 Date: 10-23-17
 Des. A.N.H.
 Dwn. A.N.H.
 Chk. -

Sheet
 1 of 2

e:\landproj\forum\forum_bvd - green.mxd\sheet\road to storm_bldg\topo\stage_32-04-15.dwg

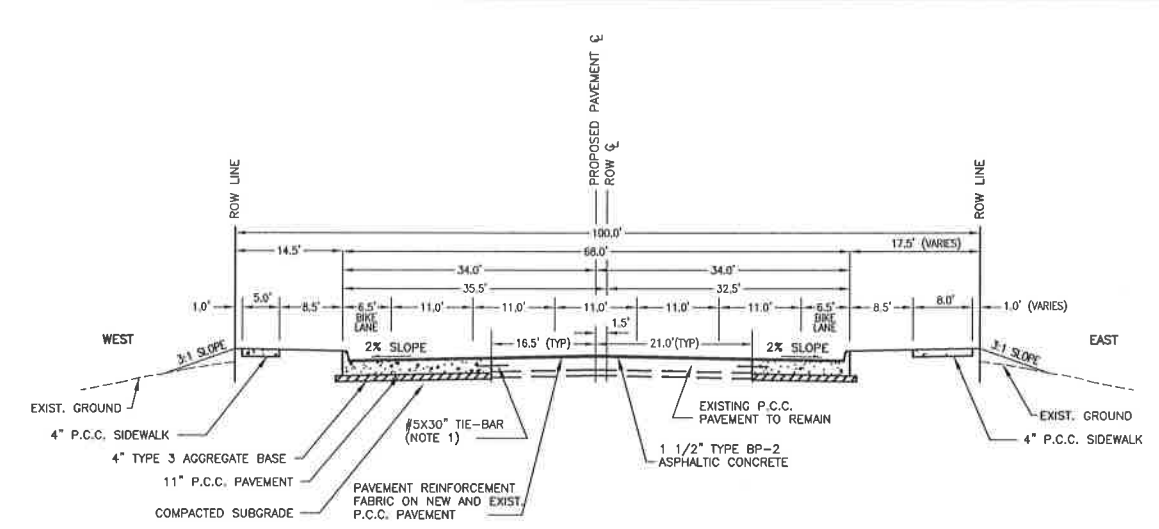
c:\addarc\james\forum_bvd - green meadows road to nifong boulevard.dwg 32-04-15.dwg



No.	Date	By	Revision

FORUM BOULEVARD
Plan & Profile - Sta. 10+50 to Sta. 14+50

City of Columbia, Missouri
Department of Public Works



NOTES:

1. FOR INSTALLATION OF PAVEMENT REINFORCEMENT FABRIC AND TIE BARS, SEE DETAIL ON SHEET XX.
2. PAVEMENT SAWCUT LINES VARY NEAR BOTH INTERSECTIONS.
3. MAINTAIN 6" CURB HEIGHT FROM TOP OF THE OVERLAY.
4. OVERLAY NEW AND EXISTING PAVEMENT.
5. 3:1 SLOPE EXCEPT IN LOCATIONS AS SHOWN ON THE PLAN & CROSS SECTION SHEETS.

FORUM BOULEVARD TYPICAL SECTION
GREEN MEADOWS ROAD TO NIFONG BOULEVARD
(NOT TO SCALE)

David Allen Nichols
Registered Professional Engineer
E-24212

File No. 32-04-15
Scale: 1" = 20'
Date: 10-23-17
Des. A.N.H.
Dwn. A.N.H.
Chk. -