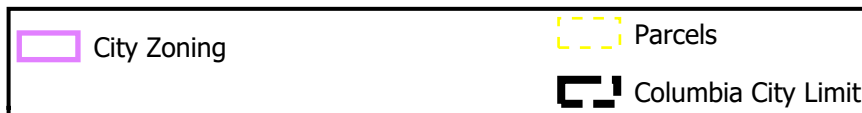


# #18-188: Westmount Sewer Easement Vacation

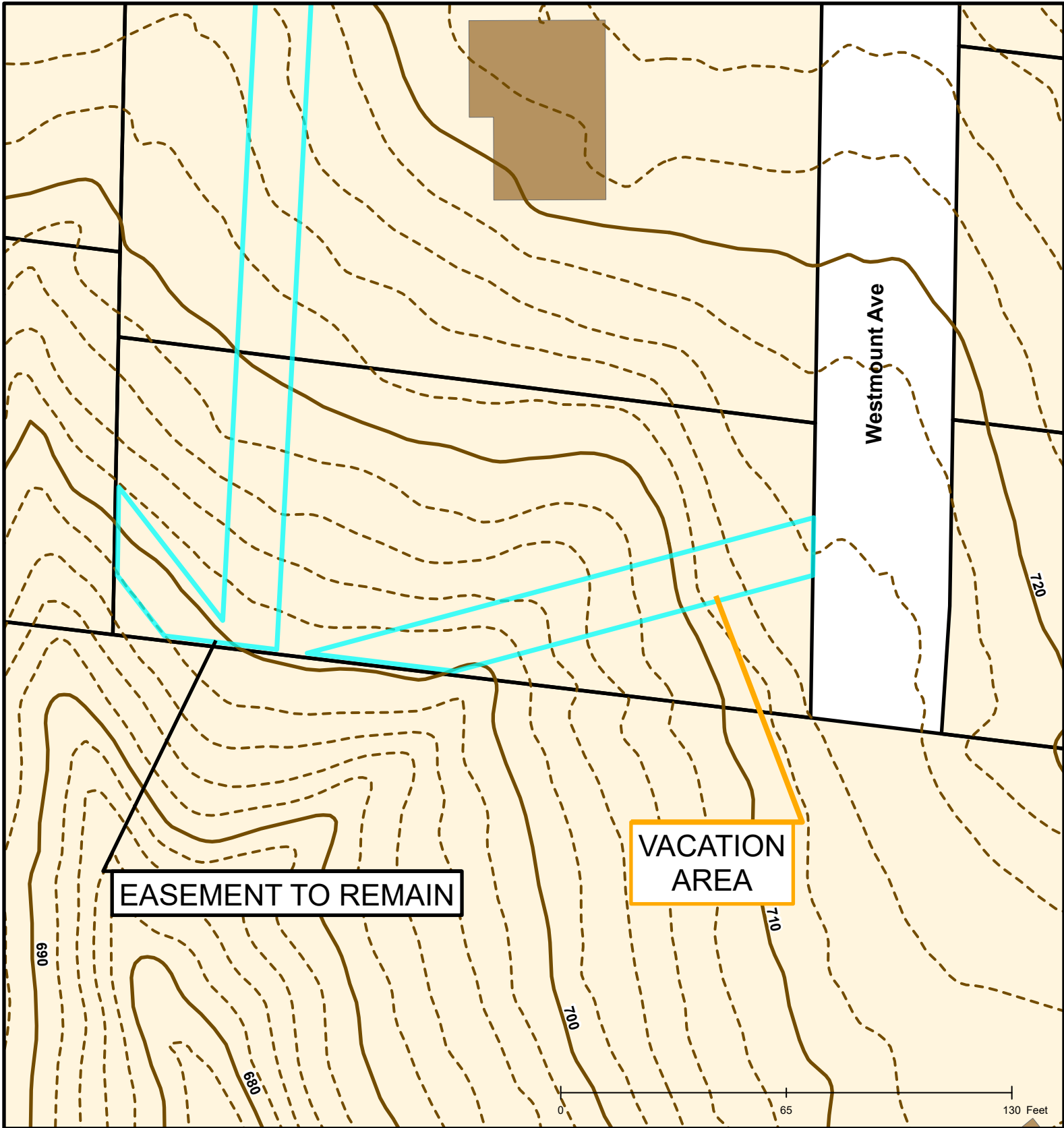


Created by The City of Columbia - Community Development Department

Parcel Data Source: Boone County Assessor







2017 Imagery: Boone County Assessor's Office

Hillshade Data: Boone County GIS



# #18-188: Westmount Sewer Easement Vacation



 Building Footprint	 Parcels	2015 Topo Lines
 10 Foot Contour Lines	 City Zoning	CODE
 2 Foot Contour Lines		 10 Foot Contour Lines



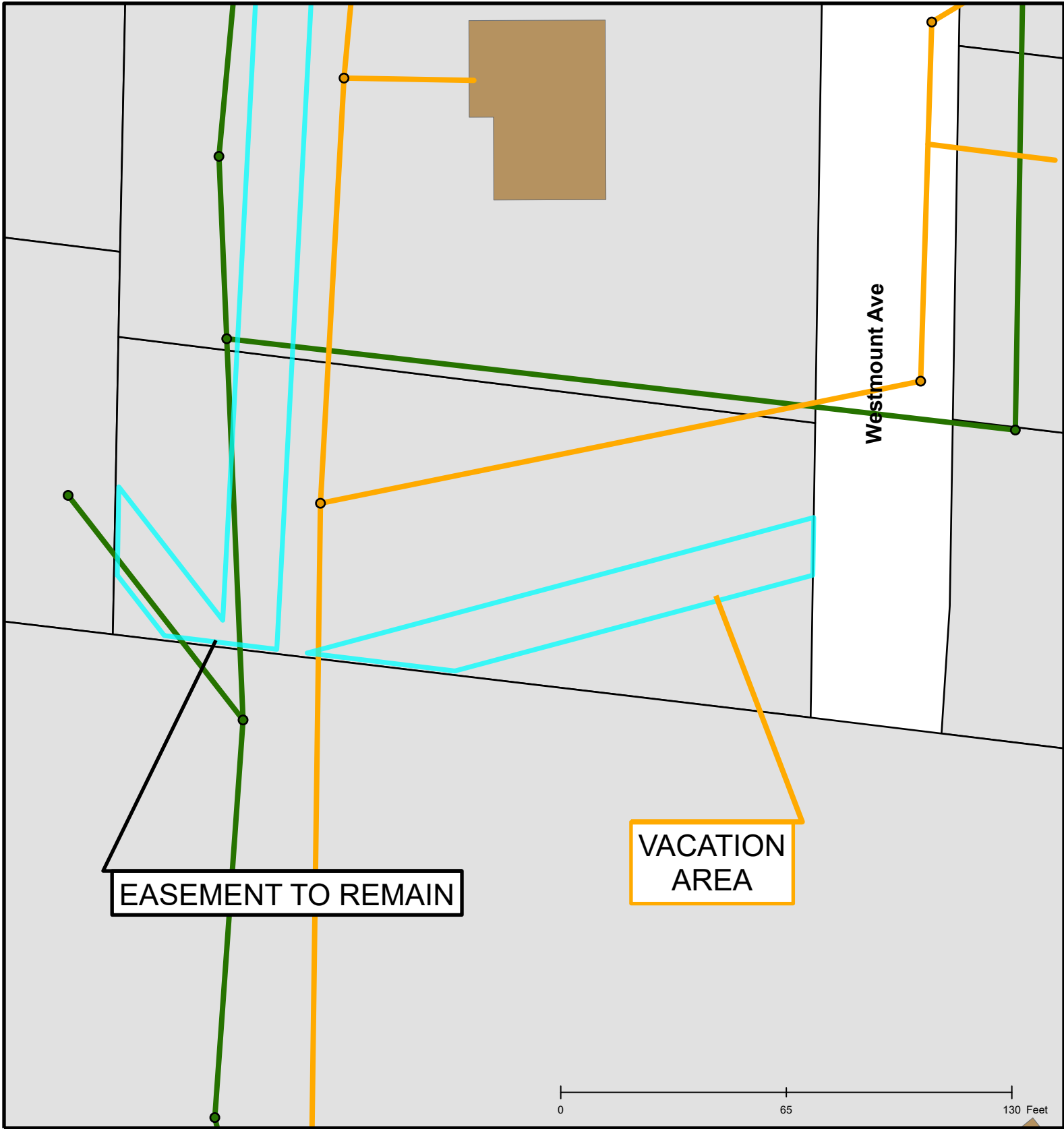
Created by The City of Columbia - Community Development Department

Parcel Data Source: Boone County Assessor

2017 Imagery: Boone County Assessor's Office

Hillshade Data: Boone County GIS





# #18-188: Westmount Sewer Easement Vacation



City Sanitary Structure	Private Sanitary Line
Private Sanitary Structure	Columbia City Limit
City Sanitary Line	Building Footprint



Created by The City of Columbia - Community Development Department

Parcel Data Source: Boone County Assessor

2017 Imagery: Boone County Assessor's Office

Hillshade Data: Boone County GIS